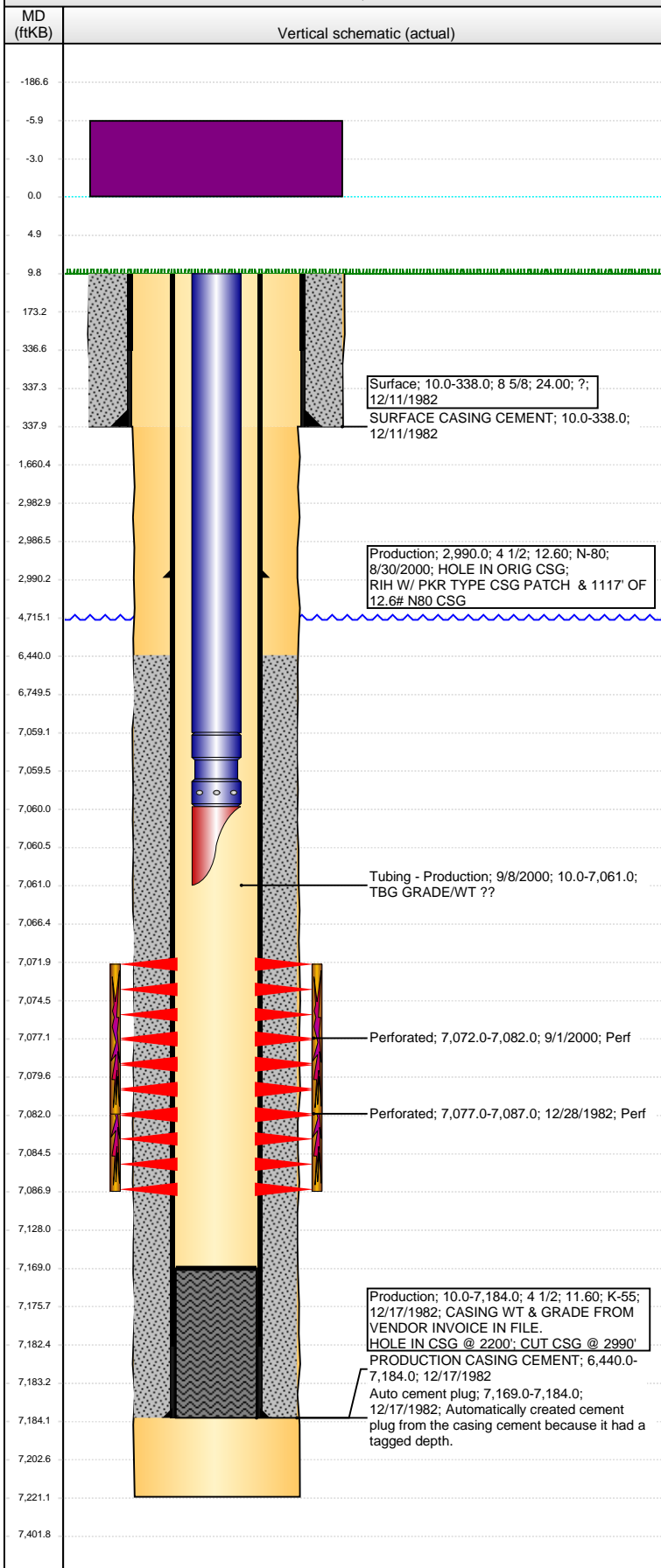


Well Name: DINNER 06-01

VERTICAL - ORIGINAL HOLE, 8/6/2014 11:23:50 AM



Well Header									
API 05-123-10898		Business Unit DJ BASIN		District 15		Well Config VERTICAL			
Original KB Elevation (ft) 4,844.00		KB - GL / MSL (ftKB) 10.00		Spud Date 12/11/1982		P & A Date			
Comment WELL FILE MINIMAL & SKETCHY CSG REPAIR 8/2000, HOLE @ 2200'									
Directions To Well									
Congressional Location									
Quarter 1	Quarter 2	Quarter 3	Quarter 4	Section	Township	Twtnshp N...	Range	Rng E/W Dir	
	SW	SW	SW	6	4	N	64	W	
Bottom Hole Location									
North-South Distance (ft)		From N or S Line		East-West Distance (ft)		From E or W Line			
Plug Back Total Depths									
Date		Depth (ftKB)		Method		Com			
12/17/1982		7,169.0		CASED HOLE LOG		DEPTH LOGGER ON CBL			
Wellbore Sections									
Section Des			Size (in)		Act Top, MD (ftKB)		Act Btm, MD (ftKB)		
SURFACE			12 1/4		10.0		338.0		
PRODUCTION			7 7/8		338.0		7,221.0		
Zone Statuses									
Zone Name		Status Date		Status		Job			
CODELL		1/5/1983		PR		DRILLING/COMPLETION - ORIGINAL, 12/11/1982 00:00			
CODELL		9/8/2000		PR		RE-FRAC, 8/25/2000 00:00			
Casing Strings									
Surface, 338.0ftKB									
Casing Description		Run Date		OD (in)	Wt/Len (l...	Grade	Top, MD (ft...	MD (ftKB)	
Surface		12/11/1982		8 5/8	24.00	?	10.0	338.0	
Production, 2,990.0ftKB									
Casing Description		Run Date		OD (in)	Wt/Len (l...	Grade	Top, MD (ft...	MD (ftKB)	
Production		8/30/2000		4 1/2	12.60	N-80	10.0	2,990.0	
Production, 7,184.0ftKB									
Casing Description		Run Date		OD (in)	Wt/Len (l...	Grade	Top, MD (ft...	MD (ftKB)	
Production		12/17/1982		4 1/2	11.60	K-55	10.0	7,184.0	
Cement									
Description					Top Depth (ftKB)		Bottom Depth (ftKB)		
SURFACE CASING CEMENT					10.0		338.0		
Description					Top Depth (ftKB)		Bottom Depth (ftKB)		
PRODUCTION CASING CEMENT					6,440.0		7,184.0		
Tubing Components									
Item Des		OD (in)	Wt (lb/ft)	Grade	Jts	Len (ft)	Btm (ftKB)	Btm (TVD) (ftKB)	
Tubing		2 3/8		?	217	7,049.00	7,059.0		
Seat Nipple		2 3/8				1.00	7,060.0		
Mule Shoe		2 3/8				1.00	7,061.0		
Perforation Data									
Zone		Bnch/St g	Entered Shot Total		Top (ftKB)		Btm (ftKB)		Date
CODELL, ORIGINAL HOLE			40		7,072.00		7,082.00		9/1/2000
CODELL, ORIGINAL HOLE			20		7,077.00		7,087.00		12/28/1982
Stimulations & Treatments									
Date	Zone				Primary Job Type				
12/29/1982	CODELL, ORIGINAL HOLE				DRILLING/COMPLETION - ORIGINAL				
Technical Result			Tech Result Details				Tech Result Note		
Comment MINIMAL DETAILS									
Date	Zone				Primary Job Type				
9/5/2000	CODELL, ORIGINAL HOLE				RE-FRAC				
Technical Result			Tech Result Details				Tech Result Note		
Comment									
Other In Hole									
Run Date		Des				OD (in)	Top (ftKB)		Btm (ftKB)

Well Name: DINNER 06-01

VERTICAL - ORIGINAL HOLE, 8/6/2014 11:23:53 AM

Logs

