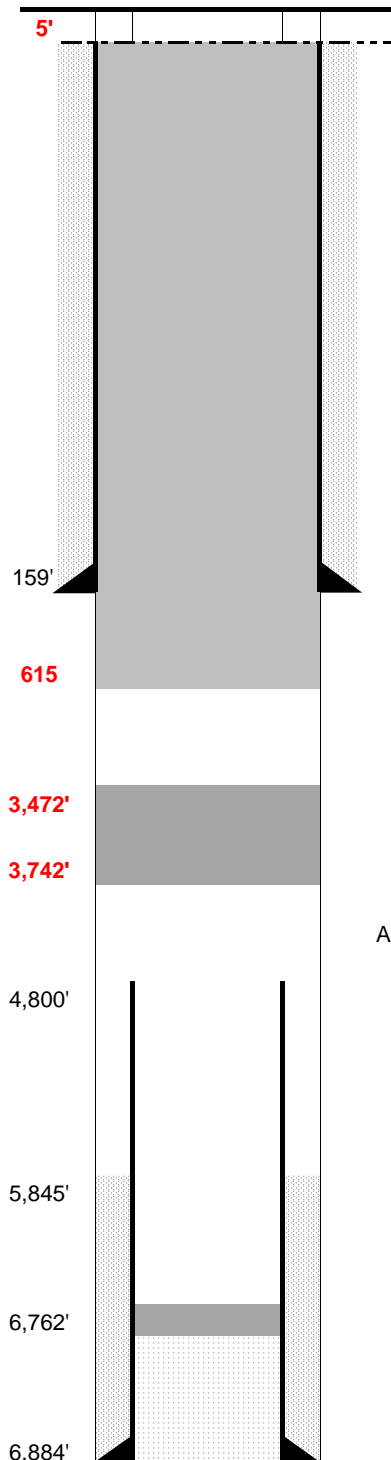


SPUD: 2/5/56  
COMP: 3/26/56  
ABDN: 6/5/14  
COGCC: PA



## SURFACE CASING

DEPTH: 159' SIZE: 8.625" GRADE: \_\_\_\_\_ WT (#/ft): 24.0  
CEMENT: 60 sx  
COMMENTS: \_\_\_\_\_

## PRODUCTION CASING

DEPTH: 6,884' SIZE: 5.5" GRADE: \_\_\_\_\_ WT (#/ft): 15.5  
CEMENT: 150 sx TOC: 5845' est  
COMMENTS:

PERFS: <u>6,816'</u>	-	<u>6,820'</u>	PROD ZONE 1: <u>D Sand</u>
PERFS: <u>          </u>	-	<u>          </u>	ZONE 2: <u>          </u>
PERFS: <u>          </u>	-	<u>          </u>	ZONE 3: <u>          </u>

## PREVIOUS PLUGS

ZONE 1 CIBP: \_\_\_\_\_ CMT: \_\_\_\_\_ OTHER: \_\_\_\_\_  
 2 CIBP: \_\_\_\_\_ CMT: \_\_\_\_\_ OTHER: \_\_\_\_\_  
 3 CIBP: \_\_\_\_\_ CMT: \_\_\_\_\_ OTHER: \_\_\_\_\_

RECOVERED:	<u>4,800'</u>	SIZE:	<u>5.5"</u>	
CMT 1:	<u>6,800'</u>	-	<u>6,762'</u>	COMMENT: <u>5 sx cement</u>
CMT 2:	<u>160'</u>	-	<u>113'</u>	COMMENT: <u>15 sx cement</u>
CMT 3:	<u>18'</u>	-	<u>4'</u>	COMMENT: <u>5 sx cement</u>

AS PLUGGED: Plug #1: 300' cement plug from 3,742' to 3,472' (100 sx)  
 Plug #2: cement from 615' to surface (350 sx)

**FORMATIONS:**

NIOBRARA:	6,070'
FORT HAYS	6,321'
D SAND:	6,808'
J SAND:	6,891'