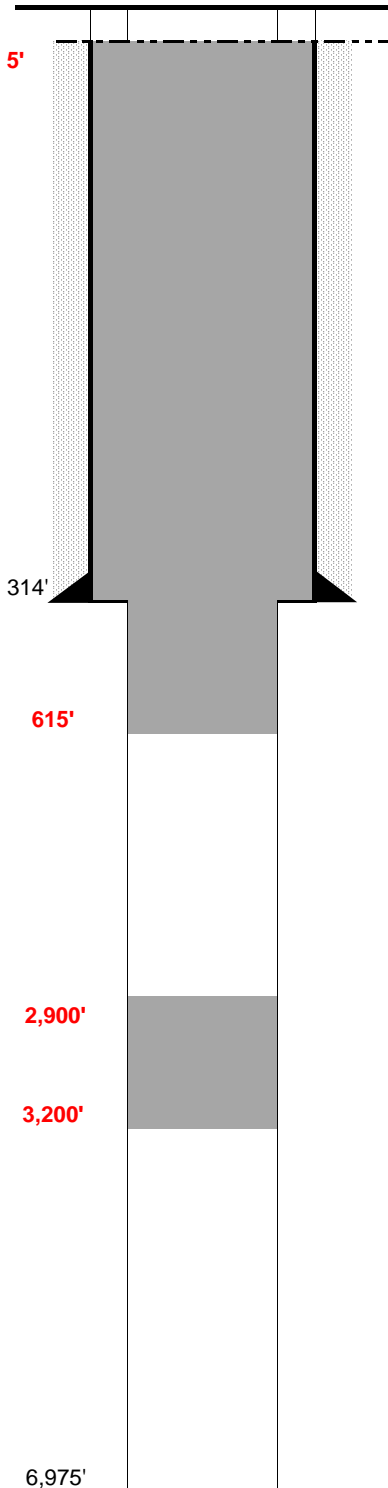


**WELL NAME:** Frank&John Duell Et Al 1-A  
**OPERATOR:** Carrizo Oil & Gas  
**COMP ZONE:** D Sand & J Sand  
**LOCATION:** 8N 60W S35 NE NE

**COUNTY:** Weld  
**STATE:** Colorado  
**API :** 05-123-13758  
**GL/KB:** 4890' / 4902'

**SPUD:** 12/18/87  
**COMP:** 12/25/87  
**ABDN:** 5/4/14  
**COGCC:** PA



**SURFACE CASING**

DEPTH: 314' SIZE: 8.625" GRADE: \_\_\_\_\_ WT (#/ft): 24.0  
 CEMENT: 200 sx  
 COMMENTS: \_\_\_\_\_

**PRODUCTION CASING**

DEPTH: \_\_\_\_\_ SIZE: \_\_\_\_\_ GRADE: \_\_\_\_\_ WT (#/ft): \_\_\_\_\_  
 CEMENT: \_\_\_\_\_ TOC: \_\_\_\_\_  
 COMMENTS: \_\_\_\_\_

PERFS: \_\_\_\_\_ - \_\_\_\_\_ PROD ZONE 1: D Sand  
 PERFS: \_\_\_\_\_ - \_\_\_\_\_ ZONE 2: \_\_\_\_\_  
 PERFS: \_\_\_\_\_ - \_\_\_\_\_ ZONE 3: \_\_\_\_\_

**PREVIOUS PLUGS**

RECOVERED: \_\_\_\_\_ SIZE: \_\_\_\_\_  
 CMT 1: 239' - 314' COMMENT: 25 - btm of surf csg.  
 CMT 2: 0' - 30' COMMENT: 10 sx - top of suf csg.  
 CMT 3: \_\_\_\_\_ - \_\_\_\_\_ COMMENT: \_\_\_\_\_

**AS PLUGGED** Plug 1: 300' cement from 3,200' to 2,900' (100 sx)  
Plug 2: Cement from 615 to Surface (350 sx)

**FORMATIONS:**

NIOBRARA: 6,110'  
 FORT HAYS \_\_\_\_\_  
 CODELL \_\_\_\_\_  
 CARLILE \_\_\_\_\_  
 BENONITE \_\_\_\_\_  
 D SAND: 6,836'  
 J SAND 6,920'