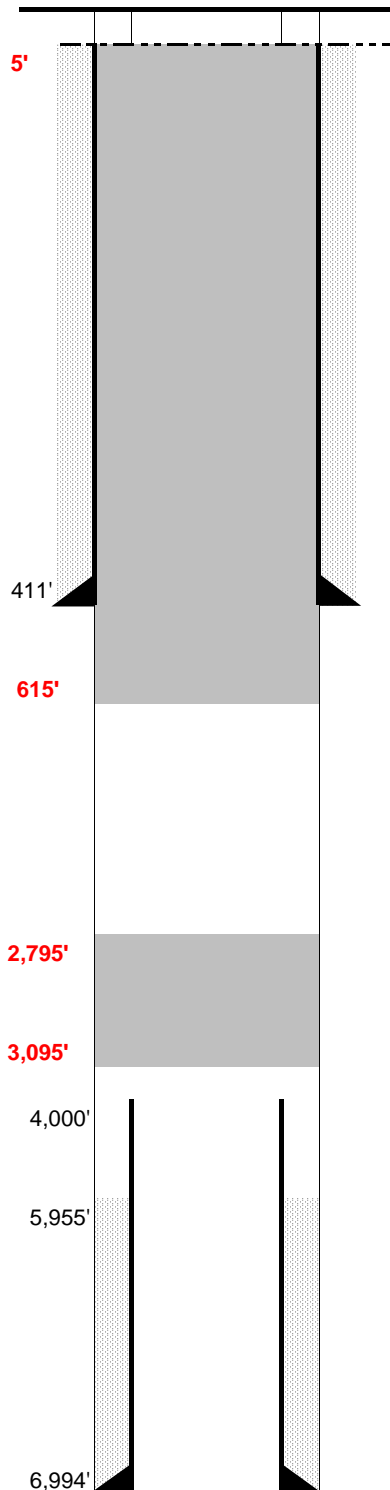


SPUD: 1/21/83
COMP: 6/19/83
ABDN: 5/19/14
COGCC: PA



SURFACE CASING

DEPTH: 411' SIZE: 8.625" GRADE: _____ WT (#/ft): 24.0
CEMENT: 280 sx
COMMENTS: _____

PRODUCTION CASING

DEPTH: 6,994' SIZE: 5.5 GRADE: _____ WT (#/ft): 15.5
CEMENT: 50 sx 50/50 Poz & 100 sx Regular TOC: 5955' (est)
COMMENTS: _____

PERFS: 6,887' - 6,898' PROD ZONE 1: J Sand
 PERFS: - ZONE 2:
 PERFS: - ZONE 3:

PREVIOUS PLUGS

| | | | | |
|------------|---------------|-------|-------------|----------------------------------|
| RECOVERED: | <u>4,000'</u> | SIZE: | <u>5.5</u> | |
| CMT 1: | <u>400'</u> | - | <u>294'</u> | COMMENT: <u>35 sx of cement</u> |
| CMT 2: | <u>35'</u> | - | <u>4'</u> | COMMENT: <u>10 sx at surface</u> |
| CMT 3: | | - | | COMMENT: <u></u> |

AS PLUGGED Plug 1: 300' cement from 3,095' - 2,795' (100 sx)

Plug 2: Cement from 615' to surface (250 sx)

FORMATIONS:

| | |
|-------------|--------|
| NIOBRARA: | 6,075' |
| CARLILE | |
| BENTONITE | |
| D SAND | 6,808' |
| J SAND | 6,887' |
| SKULL CREEK | |