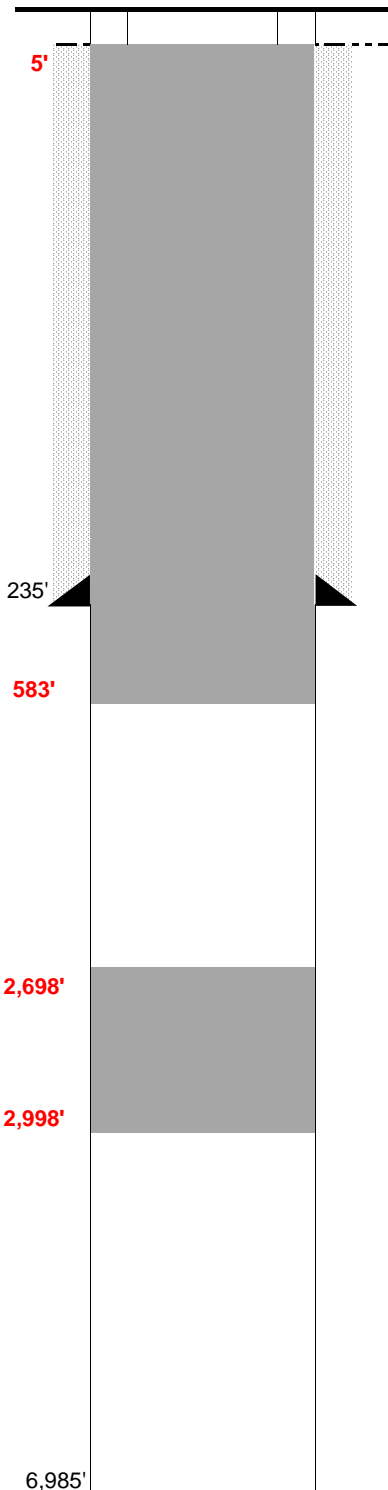


**WELL NAME:** Duell 3-23  
**OPERATOR:** Carrizo Oil & Gas  
**COMP ZONE:** J Sand  
**LOCATION:** 8N 60W S23 NE NW

**COUNTY:** Weld  
**STATE:** Colorado  
**API :** 05-123-33402

**SPUD:** 10/16/87  
**P&A:** 3/20/14  
**GL:** 4,919'



**SURFACE CASING**

DEPTH: 235' SIZE: 8.625" GRADE: \_\_\_\_\_ WT (#/ft): 24.0  
 CEMENT: 180 sx of class G cmt.  
 COMMENTS: \_\_\_\_\_

**PRODUCTION CASING**

DEPTH: \_\_\_\_\_ SIZE: \_\_\_\_\_ GRADE: \_\_\_\_\_ WT (#/ft): \_\_\_\_\_  
 CEMENT: \_\_\_\_\_ TOC: \_\_\_\_\_  
 COMMENTS: \_\_\_\_\_

PERFS: \_\_\_\_\_ - \_\_\_\_\_ PROD ZONE 1: \_\_\_\_\_  
 PERFS: \_\_\_\_\_ - \_\_\_\_\_ ZONE 2: \_\_\_\_\_  
 PERFS: \_\_\_\_\_ - \_\_\_\_\_ ZONE 3: \_\_\_\_\_

**PREVIOUS PLUGS**

RECOVERED: \_\_\_\_\_ SIZE: \_\_\_\_\_  
 CMT 1: 165' - 265' COMMENT: 20 sx 50/50 Poz Cement  
 CMT 2: 0' - 82' COMMENT: 10 sx 50/50 Poz Cement  
 CMT 3: \_\_\_\_\_ - \_\_\_\_\_ COMMENT: \_\_\_\_\_

ACTUAL: Plug #1: 300' cement plug from 2,998' to 2,698' (100 sx)  
 Plug #2: Cement plug from 583' to surface to isolate FW sands

**FORMATIONS:**

NIOBRARA: 6,096'  
 FORT HAYS 6,350'  
 CODELL 6,404'  
 D SAND 6,820'  
 D SILT 6,889'  
 J SAND 6,906'