

WPX ENERGY ROCKY MOUNTAIN LLC-EBUS

GM 521-13

H&P 318

Post Job Summary

Cement Surface Casing

Date Prepared: 05/29/2014

Job Date: 05/25/2014

Submitted by: Tony Eschete - Cement Engineer

The Road to Excellence Starts with Safety

Sold To #: 300721	Ship To #: 3273428	Quote #:	Sales Order #: 0901375740
Customer: WPX ENERGY ROCKY MOUNTAIN LLC-EBUS		Customer Rep: RON TOWERS	
Well Name: C&C ENERGY		Well #: GM 521-13	API/UWI #: 05-045-22258-00
Field: GRAND VALLEY	City (SAP): PARACHUTE	County/Parish: GARFIELD	State: COLORADO
Legal Description: SW SW-12-7S-96W-274FSL-1008FWL			
Contractor:		Rig/Platform Name/Num: H&P 318	
Job BOM: 7521			
Well Type: DIRECTIONAL GAS			
Sales Person: HALAMERICA\HAM2616		Srvc Supervisor: Eric Carter	
Job			

Formation Name				
Formation Depth (MD)	Top	0 FT	Bottom	1685 FT
Form Type			BHST	
Job depth MD	1685 Ft			Job Depth TVD
Water Depth			Wk Ht Above Floor	5 FT
Perforation Depth (MD)	From		To	

Well Data										
Description	New / Used	Size in	ID in	Weight lbm/ft	Thread	Grade	Top MD ft	Bottom MD ft	Top TVD ft	Bottom TVD ft
Casing		9.625	9.001	32.3		H-40	0	1685		0
Open Hole Section			13.5				0	1685	0	0

Tools and Accessories									
Type	Size in	Qty	Make	Depth ft		Type	Size in	Qty	Make
Guide Shoe						Top Plug	9.625	1	HES
Float Shoe						Bottom Plug			
Float Collar						SSR plug set			
Insert Float						Plug Container	9.625	1	HES
Stage Tool						Centralizers			

Miscellaneous Materials											
Gelling Agt		Conc		Surfactant		Conc		Acid Type		Qty	Conc
Treatment Fld		Conc		Inhibitor		Conc		Sand Type		Size	Qty

Fluid Data										
Stage/Plug #: 1										
Fluid #	Stage Type	Fluid Name	Qty	Qty UoM	Mixing Density lbm/gal	Yield ft3/sack	Mix Fluid Gal	Rate bbl/min	Total Mix Fluid Gal	
1	Fresh Water Spacer	Fresh Water Spacer	20	bbl	8.34			4		
Fluid #	Stage Type	Fluid Name	Qty	Qty UoM	Mixing Density lbm/gal	Yield ft3/sack	Mix Fluid Gal	Rate bbl/min	Total Mix Fluid Gal	
2	Lead Cement	VARICEM (TM) CEMENT	265	sack	12.3	2.38	13.75	8		

13.77 Gal		FRESH WATER							
Fluid #	Stage Type	Fluid Name	Qty	Qty UoM	Mixing Density lbm/gal	Yield ft3/sack	Mix Fluid Gal	Rate bbl/mi n	Total Mix Fluid Gal
3	Tail Cement	VARICEM (TM) CEMENT	165	sack	12.8	2.11	11.75	8	
11.77 Gal		FRESH WATER							
Fluid #	Stage Type	Fluid Name	Qty	Qty UoM	Mixing Density lbm/gal	Yield ft3/sack	Mix Fluid Gal	Rate bbl/mi n	Total Mix Fluid Gal
4	Fresh Water Displacement	Fresh Water Displacement	129.1	bbl	8.34			10	
Cement Left In Pipe		Amount	44 ft		Reason		Shoe Joint		
Comment									

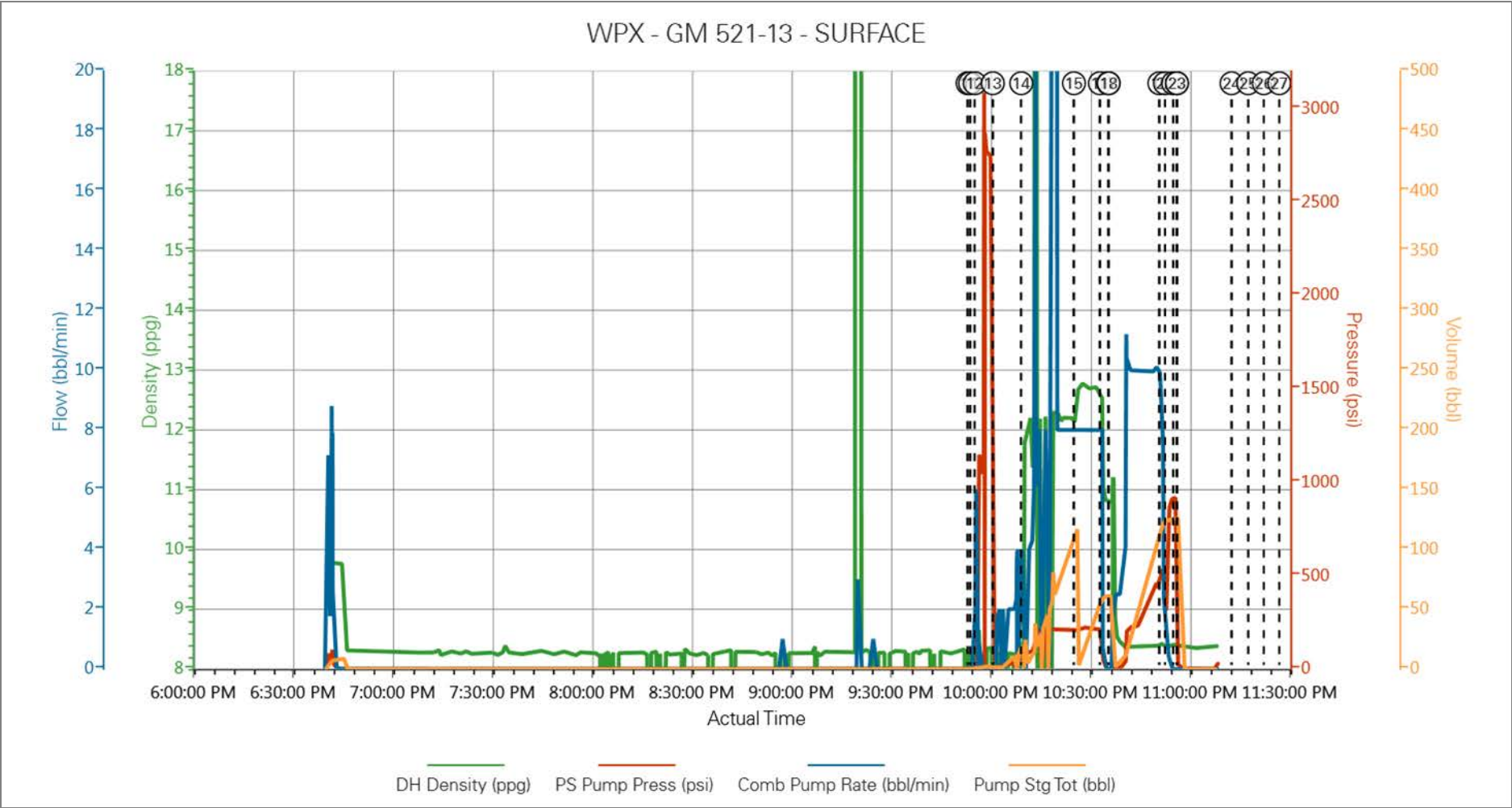
3.5 Job Event Log

Seq. No.	Activity	Graph Label	Date	Time	Source	DH Density (ppg)	PS Pump Press (psi)	Comb Pump Rate (bbl/min)	Pump Stg Tot (bbl)	Comment
1	Call Out	Call Out	5/25/2014	09:00	USER					
2	Depart Yard Safety Meeting	Depart Yard Safety Meeting	5/25/2014	11:50	USER					ATTENDED BY ALL HES CREW
3	Crew Leave Yard	Crew Leave Yard	5/25/2014	12:00	USER					
4	Arrive At Loc	Arrive At Loc	5/25/2014	13:00	USER					RIG PULLING DP
5	Assessment Of Location Safety Meeting	Assessment Of Location Safety Meeting	5/25/2014	18:30	USER					ATTENDED BY ALL HES CREW
6	Other	Other	5/25/2014	18:40	USER					
7	Pre-Rig Up Safety Meeting	Pre-Rig Up Safety Meeting	5/25/2014	18:50	USER					ATTENDED BY ALL HES CREW
8	Rig-Up Equipment	Rig-Up Equipment	5/25/2014	19:00	USER					
9	Pre-Job Safety Meeting	Pre-Job Safety Meeting	5/25/2014	21:00	USER					ATTENDED BY ALL HES CREW, RIG CREW AND COMPANY REP
10	Start Job	Start Job	5/25/2014	21:54:00	USER					TP 1685', TD 1685', SJ 44', HOLE 13.5", CASING 9.625", 32.3#, H-40, MW 9.3 PPG, RIG CIRCULATED 2 HR'S PRIOR TO JOB
11	Other	Other	5/25/2014	21:54:43	USER	8.4	30	2	2	FILL LINES
12	Test Lines	Test Lines	5/25/2014	21:56:09	USER					PRESSURED UP TO 2755 PSI, PRESSURE HELD
13	Pump Spacer	Pump Spacer	5/25/2014	22:01:34	USER	8.4	70	4	20	FRESH WATER
14	Pump Lead Cement	Pump Lead Cement	5/25/2014	22:10:07	USER	12.3	220	8	112.3	265 SKS VARICEM MIXED AT 12.3 PPG, 2.38 YIELD, 13.75 GL/SK
15	Pump Tail Cement	Pump Tail Cement	5/25/2014	22:25:59	USER	12.8	230	8	62	165 SKS VARICEM MIXED AT 12.8 PPG, 2.11 YIELD, 11.75 GL/SK
16	Shutdown	Shutdown	5/25/2014	22:33:47	USER					
17	Drop Top Plug	Drop Top Plug	5/25/2014	22:36:18	USER					PLUG LAUNCHED
18	Pump Displacement	Pump Displacement	5/25/2014	22:36:29	USER	8.4	550	10	119.1	FRESH WATER
19	Slow Rate	Slow Rate	5/25/2014	22:51:42	USER	8.4	310	2	10	
20	Bump Plug	Bump Plug	5/25/2014	22:53:22	USER					PLUG LANDED

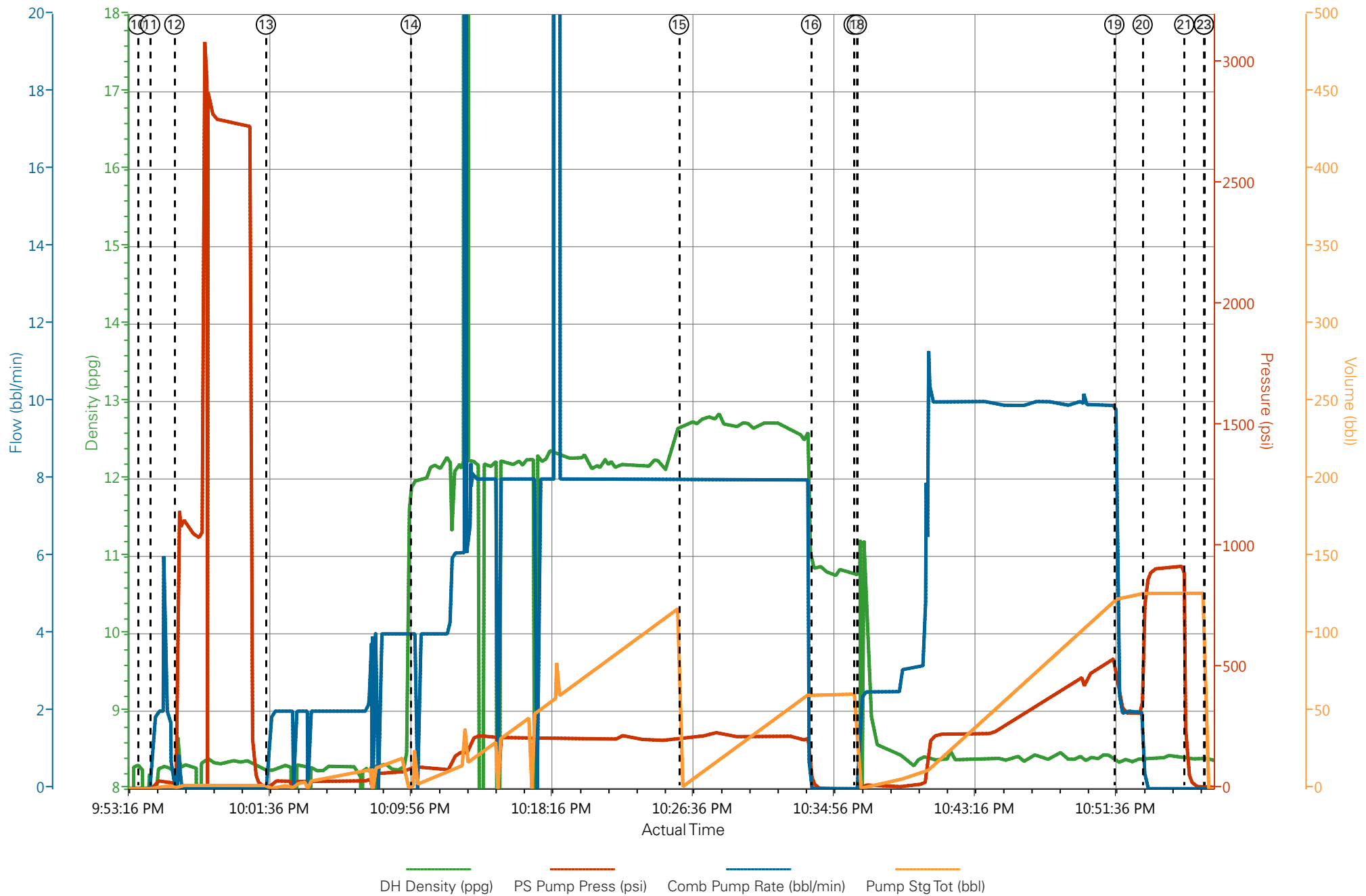
21	Check Floats	Check Floats	5/25/2014	22:55:50	USER	FLOATS HELD
22	End Job	End Job	5/25/2014	22:57:00	USER	GOOD CIRULATION THROUGH OUT JOB, PIPE DIDNT MOVE THROUGH OUT JOB, 10 BBLS CEMENT TO SURFACE
24	Post-Job Safety Meeting (Pre Rig-Down)	Post-Job Safety Meeting (Pre Rig-Down)	5/25/2014	23:00	USER	ATTENDED BY ALL HES CREW
25	Rig-Down Equipment	Rig-Down Equipment	5/25/2014	23:10	USER	
26	Depart Location Safety Meeting	Depart Location Safety Meeting	5/25/2014	23:50	USER	ATTENDED BY ALL HES CREW
27	Crew Leave Location	Crew Leave Location	5/25/2014	23:55	USER	THANK YOU FOR USING HALLIBURTON CEMENT ERIC CARTER AND CREW.

4.0 Custom Graphs

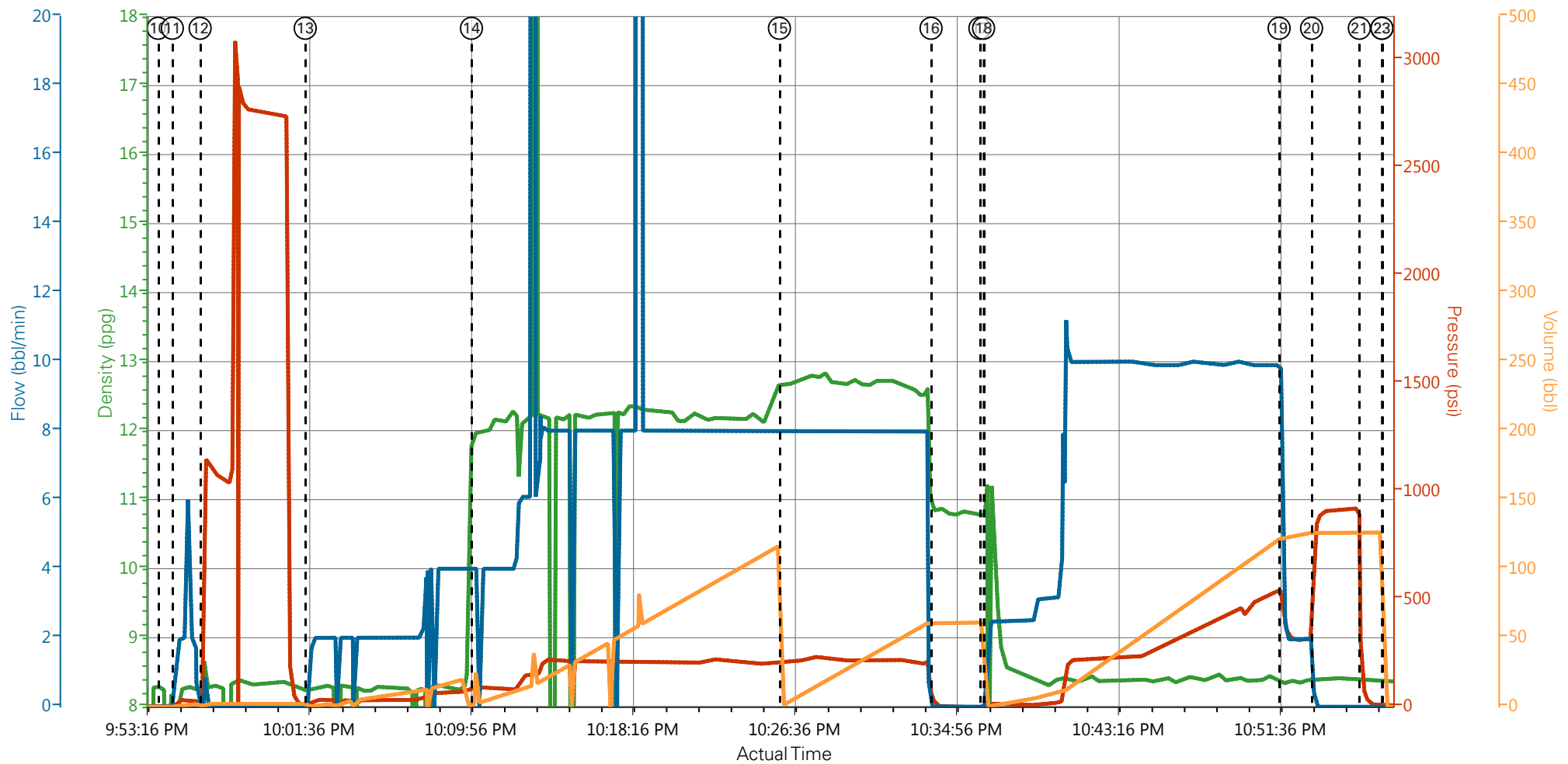
4.1 Custom Graph



WPX - GM 521-13 - SURFACE



WPX - GM 521-13 - SURFACE



— DH Density (ppg)
 — PS Pump Press (psi)
 — Comb Pump Rate (bbl/min)
 — Pump Stg Tot (bbl)

① Call Out n/a;n/a;n/a;n/a	⑧ Rig-Up Equipment n/a;n/a;n/a;n/a	⑮ Pump Tail Cement 12.69;213;8;1.2	22 End Job 8.39;4;0;0
② Depart Yard Safety Meeting n/a;n/a;n/a;n/a	⑨ Pre-Job Safety Meeting n/a;n/a;n/a;n/a	⑯ Shutdown 10.87;18;0;61	23 End Job 8.39;4;0;0
③ Crew Leave Yard n/a;n/a;n/a;n/a	⑩ Start Job 8.23;1;0;0	⑰ Drop Top Plug 10.74;-3;0;61	24 Post-Job Safety Meeting (Pre Rig-Down) n/a;n/a;n/a;n/a
④ Arrive At Loc n/a;n/a;n/a;n/a	⑪ Other 5.51;8;0.9;0.1	⑱ Pump Displacement 11.21;-1;1.7;0.1	25 Rig-Down Equipment n/a;n/a;n/a;n/a
⑤ Assessment Of Location Safety Meeting n/a;n/a;n/a;n/a	⑫ Test Lines 8.26;13;0;2	⑲ Slow Rate 8.35;454;5.1;122.8	26 Depart Location Safety Meeting n/a;n/a;n/a;n/a
⑥ Other n/a;n/a;n/a;n/a	⑬ Pump Spacer 8.24;8;0;0	20 Bump Plug 8.4;813;0;126.2	27 Crew Leave Location n/a;n/a;n/a;n/a
⑦ Pre-Rig Up Safety Meeting n/a;n/a;n/a;n/a	⑭ Pump Lead Cement 11.97;90;4;2	21 Check Floats 8.41;99;0;126.2	

▼ **HALLIBURTON** | iCem® Service

Created: 2014-05-25 14:32:17, Version: 3.0.121

Edit

Customer: WPX ENERGY ROCKY MOUNTAIN LLC-EBUS

Job Date: 5/25/2014 6:38:51 PM

Well: GM 521-13

Representative: RONTOWERS

Sales Order #: 901375740

ERIC CARTER: CARL KUKUS/ ELITE 4

HALLIBURTON

Water Analysis Report

Company: WPX

Submitted by: ERIC CARTER

Attention: J.Trout

Lease H&P 318

Well # GM 521-13

Date: 5/30/2014

Date Rec.: 5/30/2014

S.O.# 901375740

Job Type: SURFACE

Specific Gravity	<i>MAX</i>	1
pH	<i>8</i>	7
Potassium (K)	<i>5000</i>	1000 Mg / L
Hrdness	<i>500</i>	250 Mg / L
Iron (FE2)	<i>300</i>	10 Mg / L
Chlorides (Cl)	<i>3000</i>	500 Mg / L
Sulfates (SO ₄)	<i>1500</i>	<200 Mg / L
Temp	<i>40-80</i>	60 Deg
Total Dissolved Solids		OR Mg / L

Respectfully: ERIC CARTER

Title: CEMENTING SUPERVISOR

Location: Grand Junction, CO

NOTICE: This report is limited to the described sample tested. Any person using or relying on this report agrees that Halliburton shall not be liable for any loss or damage whether due to act or omission resulting from such report or it

Sales Order #: 0901375740	Line Item: 10	Survey Conducted Date: 5/25/2014
Customer: WPX ENERGY ROCKY MOUNTAIN LLC-EBUS		Job Type (BOM): CMT SURFACE CASING BOM
Customer Representative: RON TOWERS		API / UWI: (leave blank if unknown) 05-045-22258-00
Well Name: C&C ENERGY		Well Number: 0080358201
Well Type: DIRECTIONAL GAS	Well Country: USA	
H2S Present: No	Well State: COLORADO	Well County: GARFIELD

Dear Customer,

We hope that you were satisfied with the service quality of this job performed by Halliburton. It is the aim of our management and service personnel to deliver equipment and service of a standard unmatched in the service sector of the energy industry.

Please take the time to let us know if our performance met with your satisfaction. Please be as critical as possible to ensure we constantly improve our service. Your comments are of great value to us and are intended for the exclusive use of Halliburton.

CUSTOMER SATISFACTION SURVEY

CATEGORY	CUSTOMER SATISFACTION RESPONSE	
Survey Conducted Date	The date the survey was conducted	5/25/2014
Survey Interviewer	The survey interviewer is the person who initiated the survey.	HX15491
Customer Participation	Did the customer participate in this survey? (Y/N)	Yes
Customer Representative	Enter the Customer representative name	RON TOWERS
HSE	Was our HSE performance satisfactory? Circle Y or N	Yes
Equipment	Were you satisfied with our Equipment? Circle Y or N	Yes
Personnel	Were you satisfied with our people? Circle Y or N	Yes
Customer Comment	Customer's Comment	

CUSTOMER SIGNATURE

Sales Order #: 0901375740	Line Item: 10	Survey Conducted Date: 5/25/2014
Customer: WPX ENERGY ROCKY MOUNTAIN LLC-EBUS		Job Type (BOM): CMT SURFACE CASING BOM
Customer Representative: RON TOWERS		API / UWI: (leave blank if unknown) 05-045-22258-00
Well Name: C&C ENERGY		Well Number: 0080358201
Well Type: DIRECTIONAL GAS	Well Country: USA	
H2S Present: No	Well State: COLORADO	Well County: GARFIELD

KEY PERFORMANCE INDICATORS

General	
Survey Conducted Date The date the survey was conducted	5/25/2014

Cementing KPI Survey	
Type of Job Select the type of job. (Cementing or Non-Cementing)	0
Select the Maximum Deviation range for this Job What is the highest deviation for the job you just completed? This may not be the maximum well deviation.	Vertical
Total Operating Time (hours) Total Operating Hours Including Rig-up, Pumping, Rig-down. Enter in decimal format.	5
HSE Incident, Accident, Injury HSE Incident, Accident, Injury. This should be recordable incidents only.	No
Was the job purpose achieved? Was the job delivered correctly as per customer agreed design?	Yes
Operating Hours (Pumping Hours) Total number of hours pumping fluid on this job. Enter in decimal format.	1
Customer Non-Productive Rig Time (hrs) Lost time due to Halliburton in the start, execution, or completion of an ordered service or product, or delays in a follow-on service. Enter in decimal format. 0 if none.	0
Type of Rig Classification Job Was Performed Type Of Rig (classification) Job Was Performed On	Drilling Rig (Portable)
Number Of JSAs Performed Number Of Jsas Performed	5
Number of Unplanned Shutdowns Unplanned shutdown is when injection stops for any period of time.	0
Was this a Primary Cement Job (Yes / No)	Yes

Sales Order #: 0901375740	Line Item: 10	Survey Conducted Date: 5/25/2014
Customer: WPX ENERGY ROCKY MOUNTAIN LLC-EBUS		Job Type (BOM): CMT SURFACE CASING BOM
Customer Representative: RON TOWERS		API / UWI: (leave blank if unknown) 05-045-22258-00
Well Name: C&C ENERGY		Well Number: 0080358201
Well Type: DIRECTIONAL GAS	Well Country: USA	
H2S Present: No	Well State: COLORADO	Well County: GARFIELD

Primary Cement Job= Casing job, Liner job, or Tie-back job.	
Did We Run Wiper Plugs? Did We Run Top And Bottom Casing Wiper Plugs?	Top
Mixing Density of Job Stayed in Designed Density Range (0-100%) Density Range defined as +/- .20 ppg. Calculation: Total BBLs cement mixed at designed density divided by total BBLs of cement multiplied by 100	98
Was Automated Density Control Used? Was Automated Density Control (ADC) Used ?	Yes
Pump Rate (percent) of Job Stayed At Designed Pump Rate Pump Rate range defined as +/- 1bbl/min. Calculation: Total BBLs of fluid pumped at the designed rate divided by Total BBLs of fluid pumped, multiplied by 100	98
Nbr of Remedial Sqz Jobs Rqd - Competition Number Of Remedial Squeeze Jobs Required After Primary Job Performed By Competition	0
Nbr of Remedial Plug Jobs Rqd - HES Number Of Remedial Plug Jobs Needed After Primary Plug Pumped By HES	0
Nbr of Remedial Sqz Jobs Rqd - HES Number Of Remedial Squeeze Jobs Required After Primary Job Performed By HES	0