

WPX ENERGY ROCKY MOUNTAIN LLC-EBUS

GM 423-13

H&P 318

## **Post Job Summary**

### **Cement Surface Casing**

Date Prepared: 6/2/2014

Job Date: 05/31/2014

Submitted by: Tony Eschete - Cement Engineer

## The Road to Excellence Starts with Safety

Sold To #: 300721		Ship To #: 3273385		Quote #:		Sales Order #: 0901395323	
Customer: WPX ENERGY ROCKY MOUNTAIN LLC-EBUS				Customer Rep: W.C. WILSON			
Well Name: C&C ENERGY			Well #: GM 423-13			API/UWI #: 05-045-22262-00	
Field: GRAND VALLEY		City (SAP): PARACHUTE		County/Parish: GARFIELD		State: COLORADO	
Legal Description: SW SW-12-7S-96W-277FSL-1001FWL							
Contractor:				Rig/Platform Name/Num: H&P 318			
Job BOM: 7521							
Well Type: DIRECTIONAL GAS							
Sales Person: HALAMERICA\HB50180				Srvc Supervisor: Francisco Javier Castillo			
Job							

Formation Name			
Formation Depth (MD)	Top	SURFACE	Bottom 1465ft
Form Type			BHST
Job depth MD	1449ft	Job Depth TVD	
Water Depth			Wk Ht Above Floor
Perforation Depth (MD)	From		To

Well Data										
Description	New / Used	Size in	ID in	Weight lbm/ft	Thread	Grade	Top MD ft	Bottom MD ft	Top TVD ft	Bottom TVD ft
Casing		9.625	9.001	32.3			0	1449		0
Open Hole Section			13.5				0	1465		0

Tools and Accessories									
Type	Size in	Qty	Make	Depth ft		Type	Size in	Qty	Make
Guide Shoe	9.625	1	WTF	1449		Top Plug	9.625	1	HES
Float Shoe						Bottom Plug			
Float Collar	9.625	1	WTF	1410.58		SSR plug set			
Insert Float						Plug Container	9.625	1	HES
Stage Tool						Centralizers	9.625	9	HES

Miscellaneous Materials												
Gelling Agt		Conc		Surfactant		Conc		Acid Type		Qty		Conc
Treatment Fld		Conc		Inhibitor		Conc		Sand Type		Size		Qty

Fluid Data										
Stage/Plug #: 1										
Fluid #	Stage Type	Fluid Name	Qty	Qty UoM	Mixing Density lbm/gal	Yield ft <sup>3</sup> /sack	Mix Fluid Gal	Rate bbl/min	Total Mix Fluid Gal	
1	Fresh Water Spacer	Fresh Water Spacer	20	bbbl	8.34			4		
Fluid #	Stage Type	Fluid Name	Qty	Qty UoM	Mixing Density lbm/gal	Yield ft <sup>3</sup> /sack	Mix Fluid Gal	Rate bbl/min	Total Mix Fluid Gal	
2	Lead Cement	VARICEM (TM) CEMENT	185	sack	12.3	2.38		6	13.77	

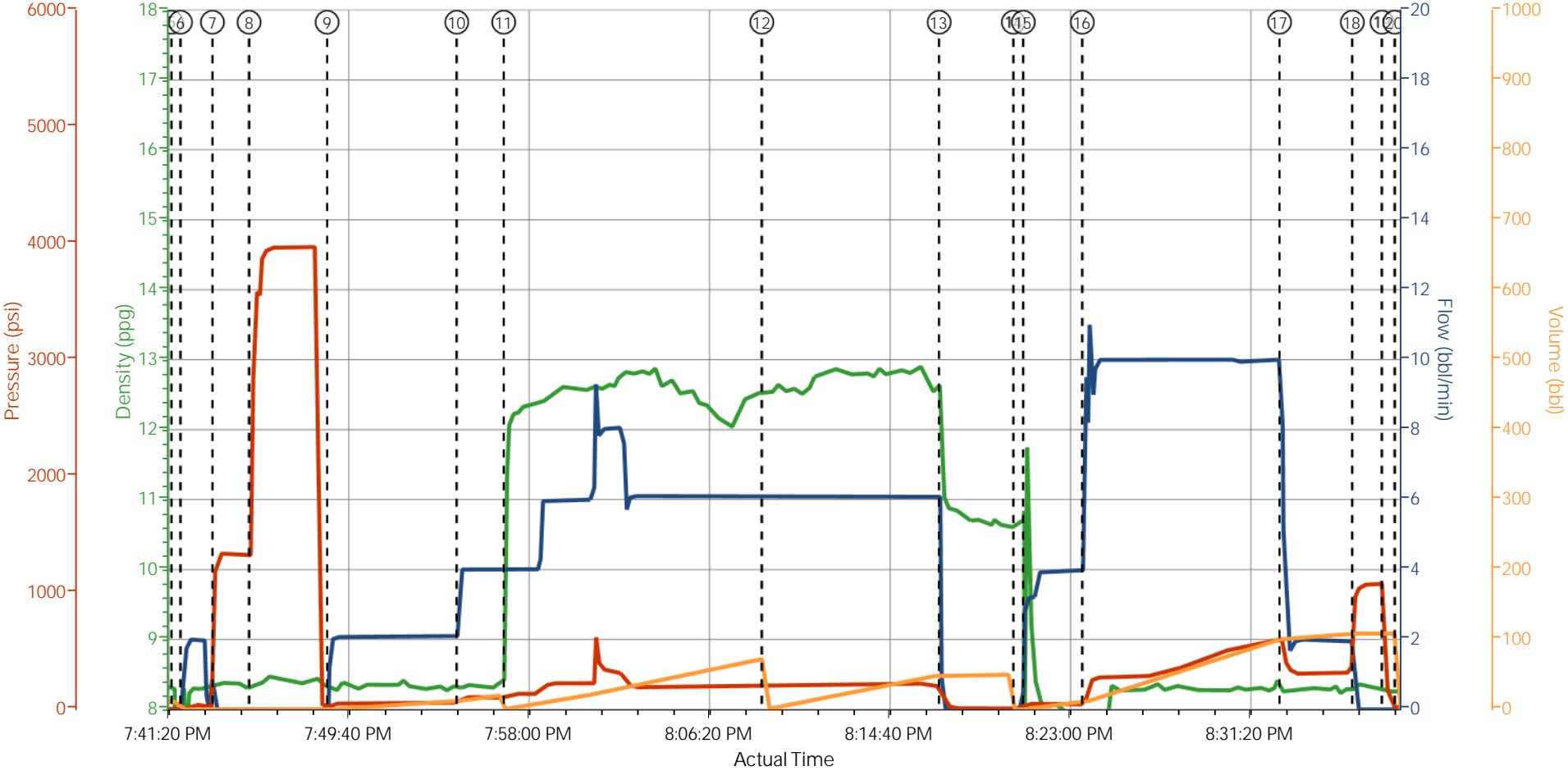
13.70 Gal		FRESH WATER							
Fluid #	Stage Type	Fluid Name	Qty	Qty UoM	Mixing Density lbm/gal	Yield ft3/sack	Mix Fluid Gal	Rate bbl/mi n	Total Mix Fluid Gal
3	Tail Cement	VARICEM (TM) CEMENT	160	sack	12.8	2.11		6	11.77
11.71 Gal		FRESH WATER							
Fluid #	Stage Type	Fluid Name	Qty	Qty UoM	Mixing Density lbm/gal	Yield ft3/sack	Mix Fluid Gal	Rate bbl/mi n	Total Mix Fluid Gal
4	Displacement	Displacement	111	bbl	8.3			10	
Cement Left In Pipe		Amount	44 ft		Reason		Shoe Joint		
Comment									

## 1.1 Job Event Log

Type	Seq. No.	Graph Label	Date	Time	Source	DH Density (ppg)	Comb Pump Rate (bbl/min)	PS Pump Press (psi)	Pump Stg Tot (bbl)	Comment
Event		CALL OUT	5/31/2014	10:30:00						ON LOCATION AT 16:00 HRS
Event		DEPART YARD SAFETY MEETING	5/31/2014	13:50:00						
Event		CREW LEAVE THE YARD	5/31/2014	14:00:00						
Event		ARRIVE ON LOCATION	5/31/2014	15:00:00						RIG WAS PULLING OUT DRILL PIPE AND SETTING UP TO RUN CASING
Event		START JOB	5/31/2014	19:41:40						TD-1449', FC-1410.58', SJ-42.48', CSG-9.625", 32.3#, H-40, MUD-9.5 PPG
Event		FILL LINES	5/31/2014	19:42:05		8.33 PPG	2 BPM	47 PSI	2 BBLS	FRESH WATER
Event		STALL OUT	5/31/2014	19:43:34						PRESSURE HELD AT 1350 PSI
Event		TEST LINES	5/31/2014	19:45:15						PRESSURE HELD AT 3963 PSI
Event		PUMP WATER SPACER	5/31/2014	19:48:51		8.33 PPG	2 BPM	55 PSI	10 BBLS	FRESH WATER / BATCH LEAD SLURRY
Event		BRING RATE UP	5/31/2014	19:54:51		8.33 PPG	4 BPM	180 PSI	10 BBLS	TOTAL WATER SPACER 20 BBLS / BRING RATE UP AFTER BATCHING UP MIXING TUB
Event		PUMP LEAD SLURRY	5/31/2014	19:57:01		12.3 PPG	6 BPM	215 PSI	78 BBLS	185 SKS, 12.3 PPG, 2.38 FT3/SK, 13.77 GAL/SK, SETUP TIME 2:38 HRS AT 70 BC
Event		PUMP TAIL SLURRY	5/31/2014	20:08:56		12.8 PPG	6 BPM	223 PSI	60 BBLS	160 SKS, 12.8 PPG, 2.11 FT3/SK, 11.77 GAL/SK, SETUP TIME 1:51 HRS AT 70 BC
Event		SHUTDOWN	5/31/2014	20:17:07						
Event		DROP TOP PLUG	5/31/2014	20:20:33						VERIFIED BY CUSTOMER
Event		PUMP DISPLACEMENT	5/31/2014	20:21:00		8.33 PPG	2 BPM	43 PSI	10 BBLS	FRESH WATER / 1ST 10 BBLS AT 2 BPM WITH 43 PSI
Event		BRING RATE UP	5/31/2014	20:23:44		8.33 PPG	10 BPM	600 PSI	91 BBLS	BRING RATE UP TO 10 BPM AFTER WASHING UP MIXING TUB
Event		SLOW RATE	5/31/2014	20:32:50		8.33 PPG	2 BPM	315 PSI	10 BBLS	
Event		BUMP PLUG	5/31/2014	20:36:12				1048 PSI	TOTAL DISP. 111 BBLS	CIRCULATED 25 BBLS / 59 SKS OF CEMENT TO THE SURFACE
Event		CHECK FLOATS	5/31/2014	20:37:34						FLOATS HELD / FLOW BACK .75 BBL TO TANKS
Event		END JOB	5/31/2014	20:38:10						USED 40 LBS OF SUGAR IN THE CELLAR

Event	RIG DOWN SAFETY MEETING	5/31/2014	20:40:00	
Event	RIG DOWN COMPLETE	5/31/2014	21:35:00	
Event	DEPART LOCATION SAFETY MEETING	5/31/2014	21:45:00	NO INJURIES TO REPORT AFTER THE JOB
Event	CREW LEAVE LOCATION	5/31/2014	22:00:00	
Event	THANK YOU	5/31/2014	22:01:00	THANK YOU FOR YOUR BUSINESS FROM JAVIER CASTILLO AND CREW

WPX 9 5/8 SURFACE



DH Density (ppg) Comb Pump Rate (bbl/min) PS Pump Press (psi) Pump Stg Tot (bbl)

- CALL OUT n/a;n/a;n/a;n/a
- DEPART YARD SAFETY MEETING n/a;n/a;n/a;n/a
- CREW LEAVE THE YARD n/a;n/a;n/a;n/a
- ARRIVE ON LOCATION n/a;n/a;n/a;n/a
- START JOB 0.87;0;6;11.1
- FILL LINES 8.26;0;9;4;0
- STALL OUT 8.35;0;1158;2.1
- TEST LINES 8.35;0;2836;2.1
- PUMP WATER SPACER 8.31;1.9;27;0.2
- BRING RATE UP 8.32;4;84;12.7
- PUMP LEAD SLURRY 11.59;4;113;1.2
- PUMPTAIL SLURRY 12.56;6.1;214;0.15
- SHUTDOWN 11.63;0;104;49.6
- DROPTOP PLUG 10.69;0;8;0
- PUMP DISPLACEMENT 11.74;3.2;45;0.6
- BRING RATE UP 7.85;9.5;109;11.2
- SLOW RATE 8.26;5;47
- BUMP PLUG 8.38;0;10
- CHECK FLOATS 8.28;C
- 20 END JOB 8.29;0;9.41;C

HALLIBURTON | iCem® Service

Created: 2014-05-31 19:06:36, Version: 3.0.121

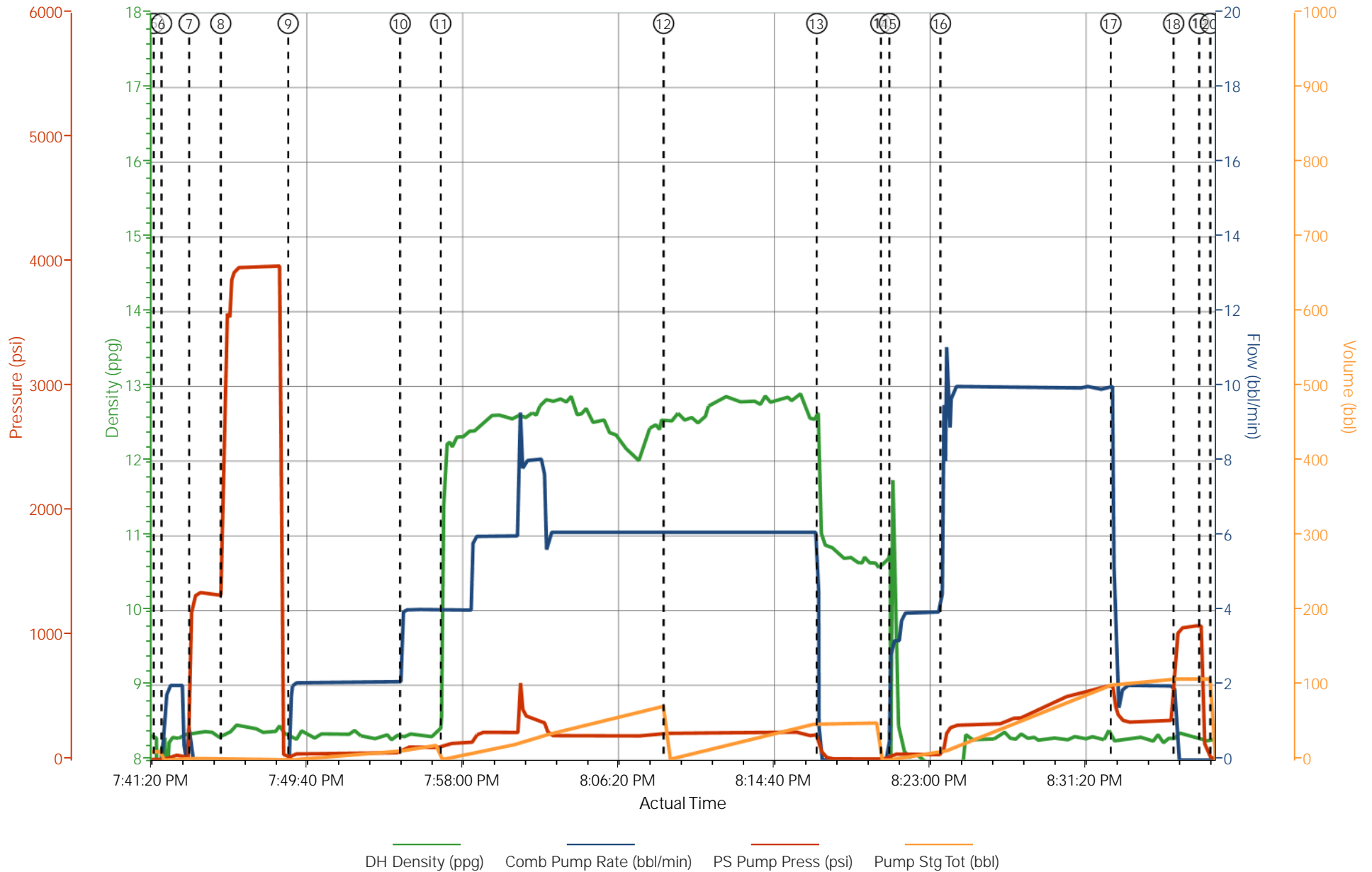
Edit

Customer : WPX ENERGY ROCKY MOUNTAIN LLC-  
EBUS  
Representative: W.C. WILSON

Job Date : 5/31/2014 7:08:05 PM  
Sales Order # : 901395323

Well : GM 423-13  
ELITE #3 : J. CASTILLO / CARL KUKUS

# WPX 9 5/8 SURFACE



# HALLIBURTON

## Water Analysis Report

Company: WPX

Submitted by: JAVIER CASTILLO

Attention: Chuck Ross

Lease GM

Well # 423-13

Date: 5/31/2014

Date Rec.: 5/31/2014

S.O.# 901395323

Job Type: SURFACE

Specific Gravity	<i>MAX</i>	<b>1</b>
pH	<i>8</i>	<b>7</b>
Potassium (K)	<i>5000</i>	<b>200</b> Mg / L
Calcium (Ca)	<i>500</i>	<b>120</b> Mg / L
Iron (FE2)	<i>300</i>	<b>0</b> Mg / L
Chlorides (Cl)	<i>3000</i>	<b>500</b> Mg / L
Sulfates (SO <sub>4</sub> )	<i>1500</i>	<b>200</b> Mg / L
Chlorine (Cl <sub>2</sub> )		<b>0</b> Mg / L
Temp	<i>40-80</i>	<b>70</b> Deg
Total Dissolved Solids		<b>510</b> Mg / L

Respectfully: JAVIER CASTILLO

Title: CEMENTING SUPERVISOR

Location: Grand Junction, CO

NOTICE: This report is limited to the described sample tested. Any person using or relying on this report agrees that Halliburton shall not be liable for any loss or damage whether due to act or omission resulting from such report or its use.



<b>Sales Order #:</b> 0901395323	<b>Line Item:</b> 10	<b>Survey Conducted Date:</b> 5/31/2014
<b>Customer:</b> WPX ENERGY ROCKY MOUNTAIN LLC-EBUS		<b>Job Type (BOM):</b> CMT SURFACE CASING BOM
<b>Customer Representative:</b> W.C. WILSON		<b>API / UWI: (leave blank if unknown)</b> 05-045-22262-00
<b>Well Name:</b> C&C ENERGY		<b>Well Number:</b> 0080358147
<b>Well Type:</b> DIRECTIONAL GAS	<b>Well Country:</b> USA	
<b>H2S Present:</b> No	<b>Well State:</b> COLORADO	<b>Well County:</b> GARFIELD

Dear Customer,

We hope that you were satisfied with the service quality of this job performed by Halliburton. It is the aim of our management and service personnel to deliver equipment and service of a standard unmatched in the service sector of the energy industry.

Please take the time to let us know if our performance met with your satisfaction. Please be as critical as possible to ensure we constantly improve our service. Your comments are of great value to us and are intended for the exclusive use of Halliburton.

### CUSTOMER SATISFACTION SURVEY

CATEGORY	CUSTOMER SATISFACTION RESPONSE	
Survey Conducted Date	The date the survey was conducted	5/31/2014
Survey Interviewer	The survey interviewer is the person who initiated the survey.	HB85312
Customer Participation	Did the customer participate in this survey? (Y/N)	Yes
Customer Representative	Enter the Customer representative name	W.C. WILSON
HSE	Was our HSE performance satisfactory? Circle Y or N	Yes
Equipment	Were you satisfied with our Equipment? Circle Y or N	Yes
Personnel	Were you satisfied with our people? Circle Y or N	Yes
Customer Comment	Customer's Comment	

CUSTOMER SIGNATURE

<b>Sales Order #:</b> 0901395323	<b>Line Item:</b> 10	<b>Survey Conducted Date:</b> 5/31/2014
<b>Customer:</b> WPX ENERGY ROCKY MOUNTAIN LLC-EBUS		<b>Job Type (BOM):</b> CMT SURFACE CASING BOM
<b>Customer Representative:</b> W.C. WILSON		<b>API / UWI: (leave blank if unknown)</b> 05-045-22262-00
<b>Well Name:</b> C&C ENERGY		<b>Well Number:</b> 0080358147
<b>Well Type:</b> DIRECTIONAL GAS	<b>Well Country:</b> USA	
<b>H2S Present:</b> No	<b>Well State:</b> COLORADO	<b>Well County:</b> GARFIELD

### KEY PERFORMANCE INDICATORS

General	
<b>Survey Conducted Date</b> The date the survey was conducted	5/31/2014

Cementing KPI Survey	
<b>Type of Job</b> Select the type of job. (Cementing or Non-Cementing)	0
<b>Select the Maximum Deviation range for this Job</b> What is the highest deviation for the job you just completed? This may not be the maximum well deviation.	Vertical
<b>Total Operating Time (hours)</b> Total Operating Hours Including Rig-up, Pumping, Rig-down. Enter in decimal format.	4
<b>HSE Incident, Accident, Injury</b> HSE Incident, Accident, Injury. This should be recordable incidents only.	No
<b>Was the job purpose achieved?</b> Was the job delivered correctly as per customer agreed design?	Yes
<b>Operating Hours (Pumping Hours)</b> Total number of hours pumping fluid on this job. Enter in decimal format.	1
<b>Customer Non-Productive Rig Time (hrs)</b> Lost time due to Halliburton in the start, execution, or completion of an ordered service or product, or delays in a follow-on service. Enter in decimal format. 0 if none.	0
<b>Type of Rig Classification Job Was Performed</b> Type Of Rig (classification) Job Was Performed On	Drilling Rig (Portable)
<b>Number Of JSAs Performed</b> Number Of Jsas Performed	5
<b>Number of Unplanned Shutdowns</b> Unplanned shutdown is when injection stops for any period of time.	0
<b>Was this a Primary Cement Job (Yes / No)</b>	Yes

<b>Sales Order #:</b> 0901395323	<b>Line Item:</b> 10	<b>Survey Conducted Date:</b> 5/31/2014
<b>Customer:</b> WPX ENERGY ROCKY MOUNTAIN LLC-EBUS		<b>Job Type (BOM):</b> CMT SURFACE CASING BOM
<b>Customer Representative:</b> W.C. WILSON		<b>API / UWI: (leave blank if unknown)</b> 05-045-22262-00
<b>Well Name:</b> C&C ENERGY		<b>Well Number:</b> 0080358147
<b>Well Type:</b> DIRECTIONAL GAS	<b>Well Country:</b> USA	
<b>H2S Present:</b> No	<b>Well State:</b> COLORADO	<b>Well County:</b> GARFIELD

Primary Cement Job= Casing job, Liner job, or Tie-back job.	
<b>Did We Run Wiper Plugs?</b> Did We Run Top And Bottom Casing Wiper Plugs?	Top
<b>Mixing Density of Job Stayed in Designed Density Range (0-100%)</b> Density Range defined as +/- .20 ppg. Calculation: Total BBLs cement mixed at designed density divided by total BBLs of cement multiplied by 100	95
<b>Was Automated Density Control Used?</b> Was Automated Density Control (ADC) Used ?	Yes
<b>Pump Rate (percent) of Job Stayed At Designed Pump Rate</b> Pump Rate range defined as +/- 1bbl/min. Calculation: Total BBLs of fluid pumped at the designed rate divided by Total BBLs of fluid pumped, multiplied by 100	95
<b>Nbr of Remedial Sqz Jobs Rqd - Competition</b> Number Of Remedial Squeeze Jobs Required After Primary Job Performed By Competition	0
<b>Nbr of Remedial Plug Jobs Rqd - HES</b> Number Of Remedial Plug Jobs Needed After Primary Plug Pumped By HES	0
<b>Nbr of Remedial Sqz Jobs Rqd - HES</b> Number Of Remedial Squeeze Jobs Required After Primary Job Performed By HES	0