



Pioneer Energy Services

GAMMA RAY CCL CEMENT BOND VDL

Company AUGUSTUS ENERGY RESOURCES, LLC
Well LEGACY ACRES 34-35 1S44W
Field WILDCAT
County YUMA State COLORADO

Location: API # : 0512512087
799' FSL & 2194' FEL
SWSE

Other Services

SEC 35 TWP 1S RGE 44W

Elevation

Permanent Datum GL Elevation 3792

Log Measured From KB
Drilling Measured From KB

K.B. 3798
D.F. 3797
G.L. 3792

Date 28-JUL-2014

Run Number	ONE	
Depth Driller	2325'	
Depth Logger	2260'	
Bottom Logged Interval	2260'	
Top Log Interval	SURFACE	
Open Hole Size	6.25"	
Type Fluid	WATER	
Density / Viscosity	8.33 PPG	
Max. Recorded Temp.	128°F	
Estimated Cement Top	SURFACE	
Time Well Ready	PM	
Time Logger on Bottom	12:05	
Equipment Number	75	
Location	FORT MORGAN	
Recorded By	LEROY HOBBS	
Witnessed By	GREG JONES	

Borehole Record				Tubing Record			
Bit	From	To	Size	Weight	From	To	

Casing Record	Size	Wgt/Ft	Top	Bottom
Surface String				
Prot. String				
Production String	4-1/2"	11.6#	SURFACE	2325'
Liner				

<<< Fold Here >>>

All interpretations are opinions based on inferences from electrical or other measurements and we cannot and do not guarantee the accuracy or correctness of any interpretation, and we shall not, except in the case of gross or willful negligence on our part, be liable or responsible for any loss, costs, damages, or expenses incurred or sustained by anyone resulting from any interpretation made by any of our officers, agents or employees. These interpretations are also subject to our general terms and conditions set out in our current Price Schedule.

Comments

LOG WAS CORRECTED TO PIONEER COMPENSATED NEUTRON LOG
DATED JULY 16, 2014.

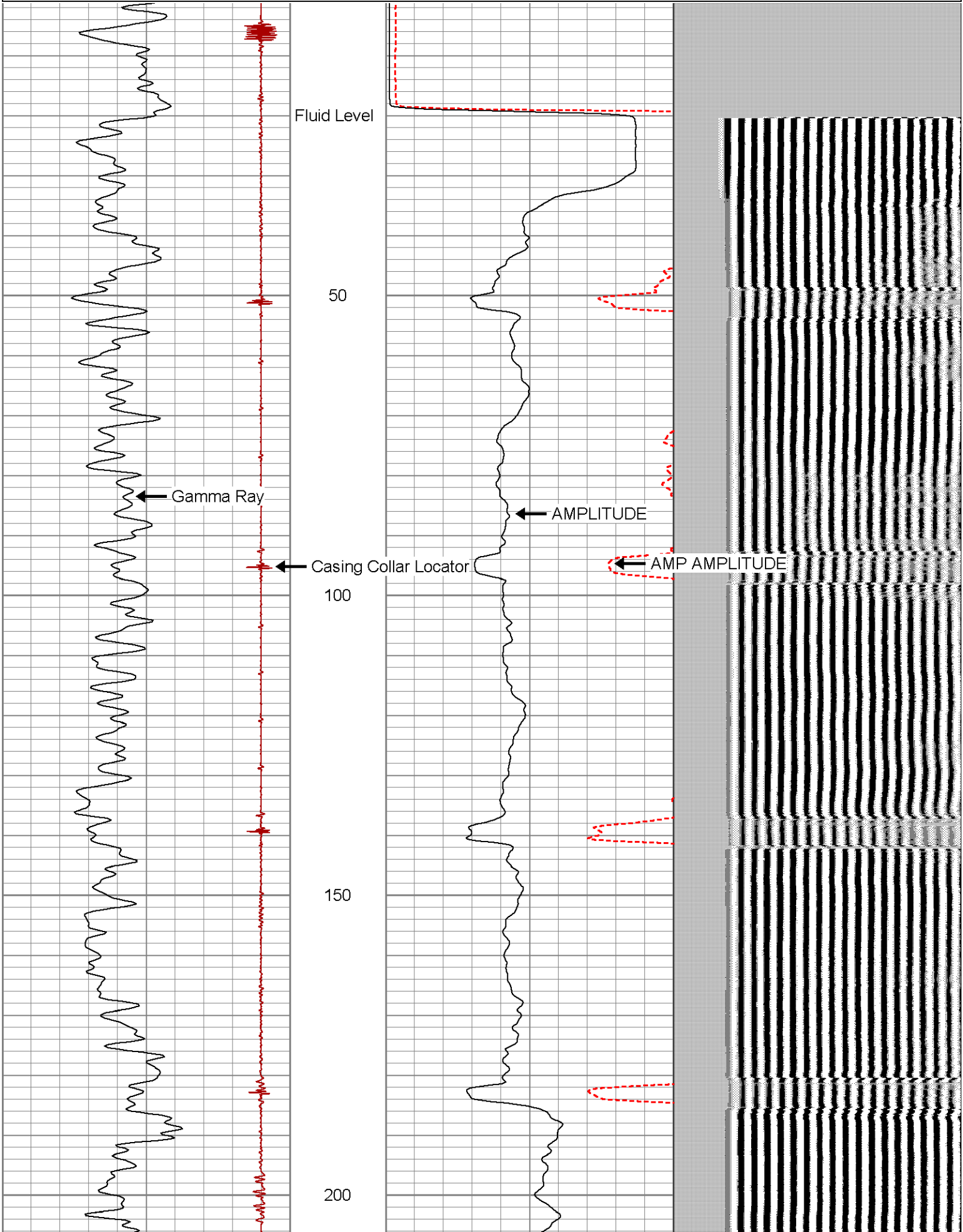
Database File: legacy acres_34-35 1s44w.db
Dataset Pathname: pass1
Presentation Format: cbl_drs
Dataset Creation: Mon Jul 28 12:20:33 2014 by Log 7.0 B1
Charted by: Depth in Feet scaled 1:240

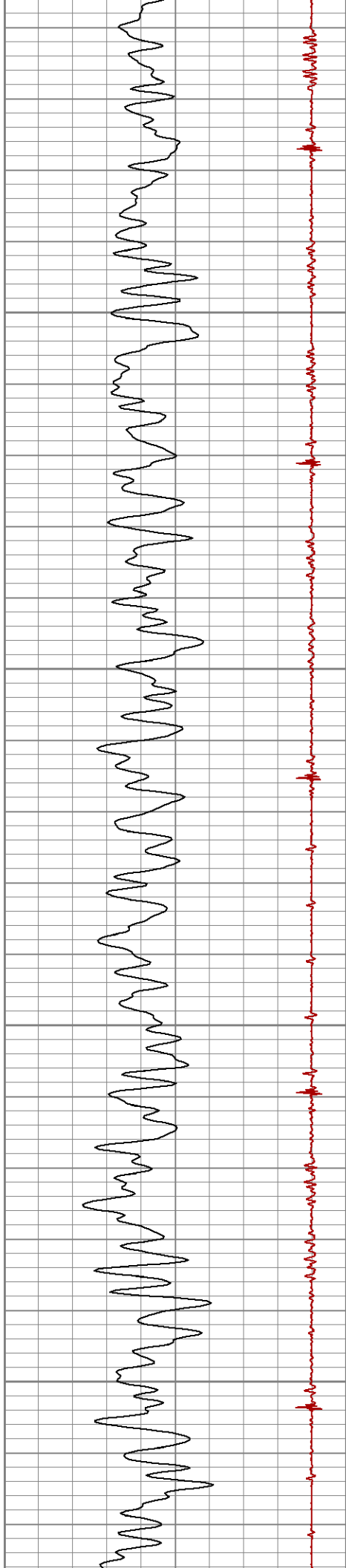
9	Collar Locator	-1
0	Gamma Ray (GAPI)	200

0	AMP AMPLITUDE (mV)	40
0	AMPLITUDE (mV)	100

VDL

1200



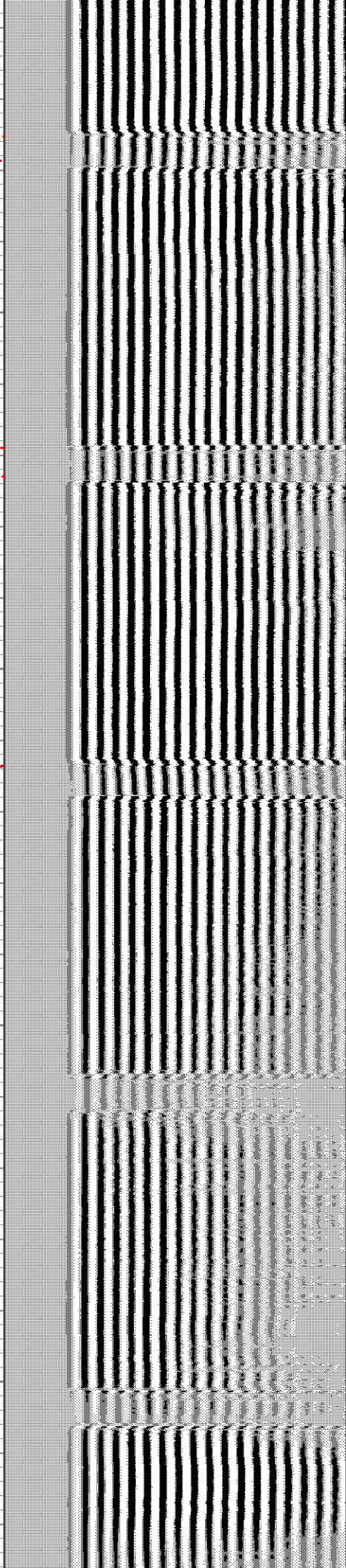
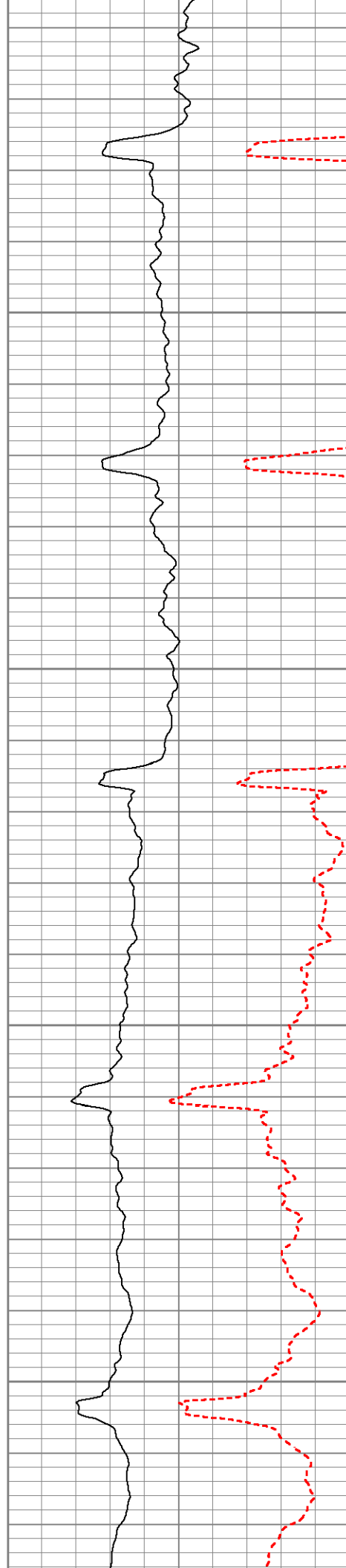


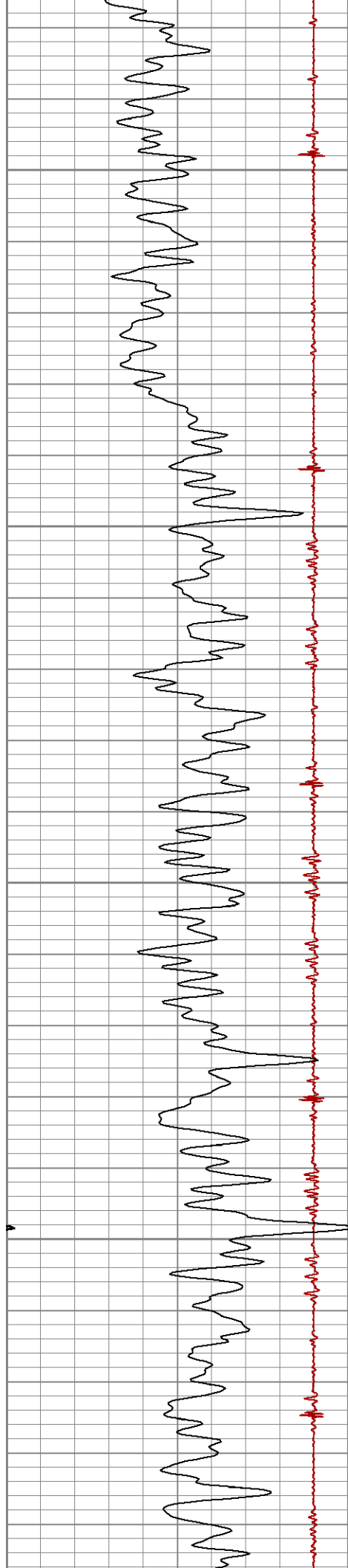
250

300

350

400



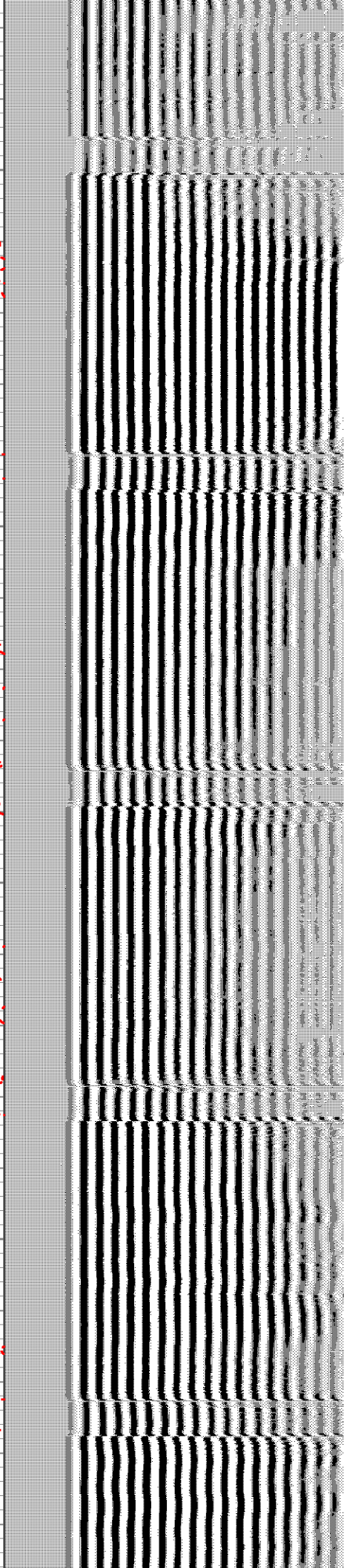
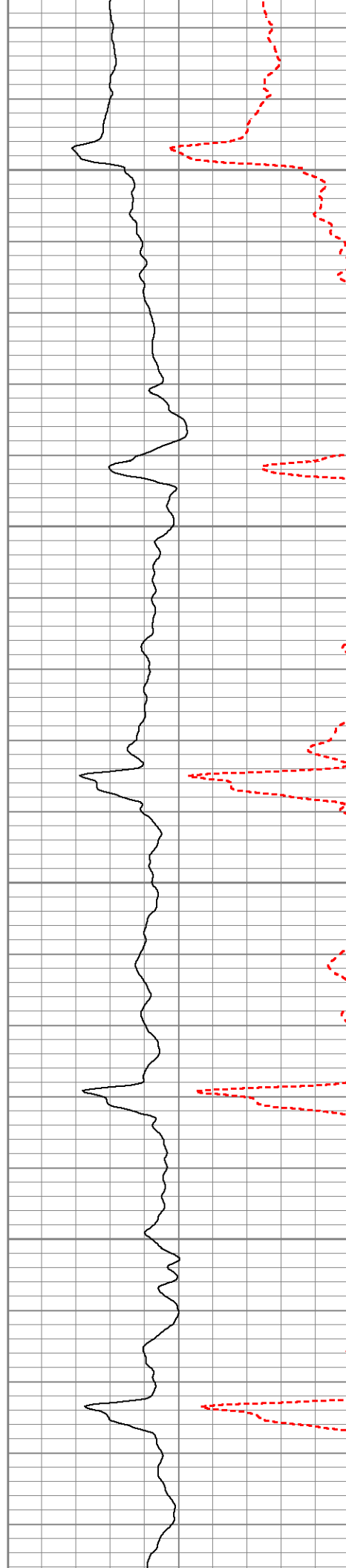


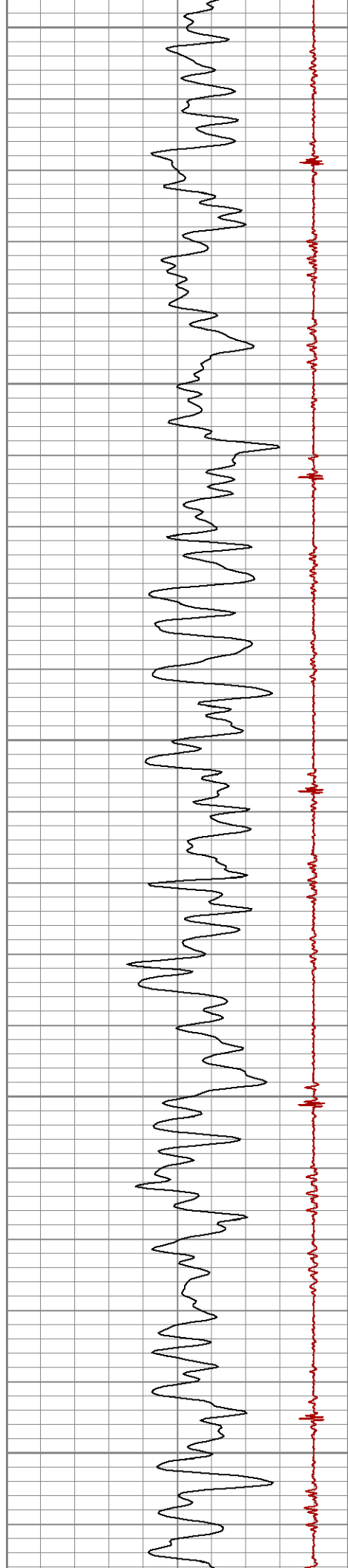
450

500

550

600





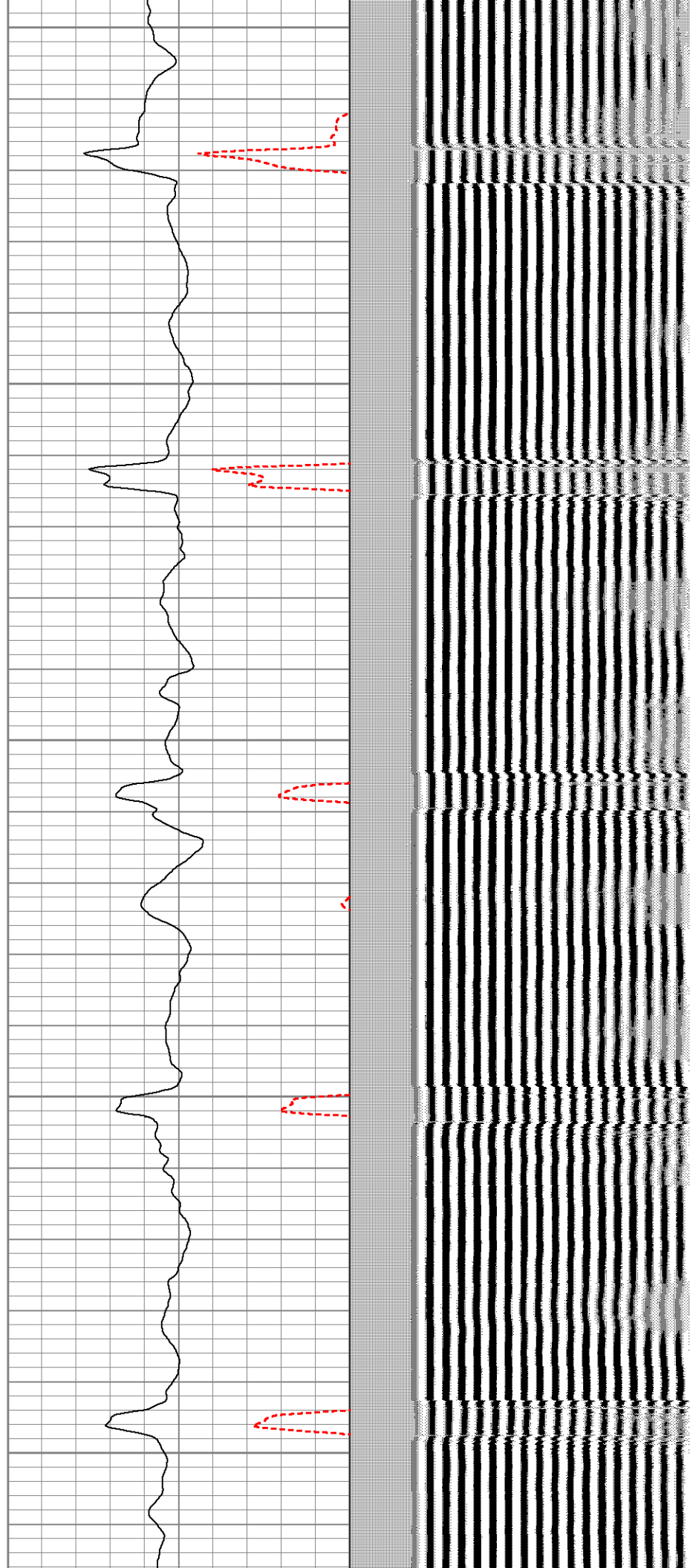
650

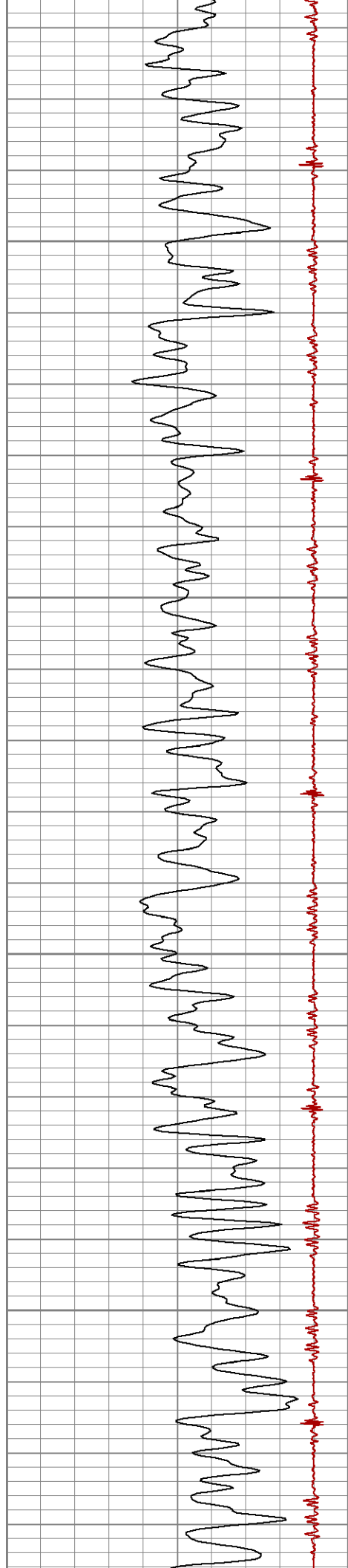
700

750

800

850



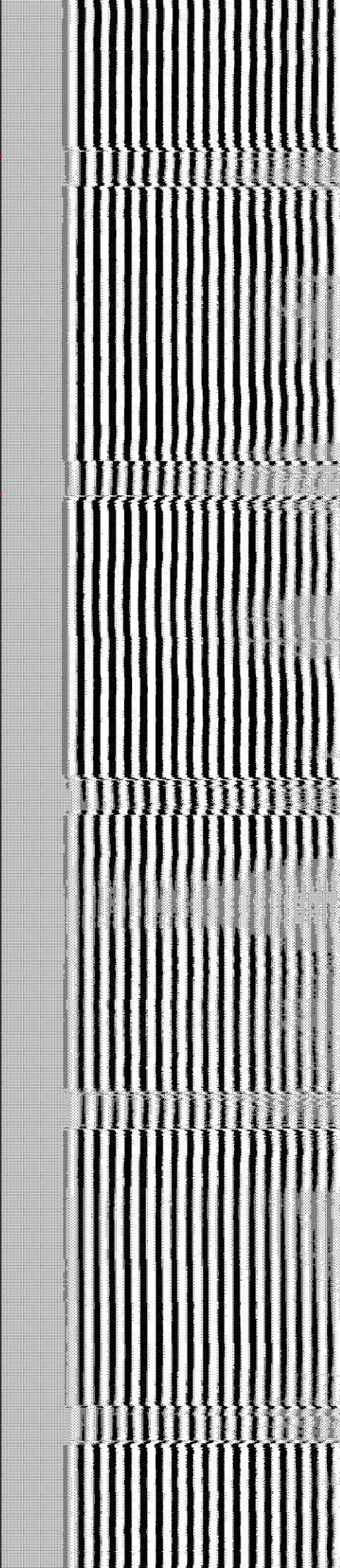
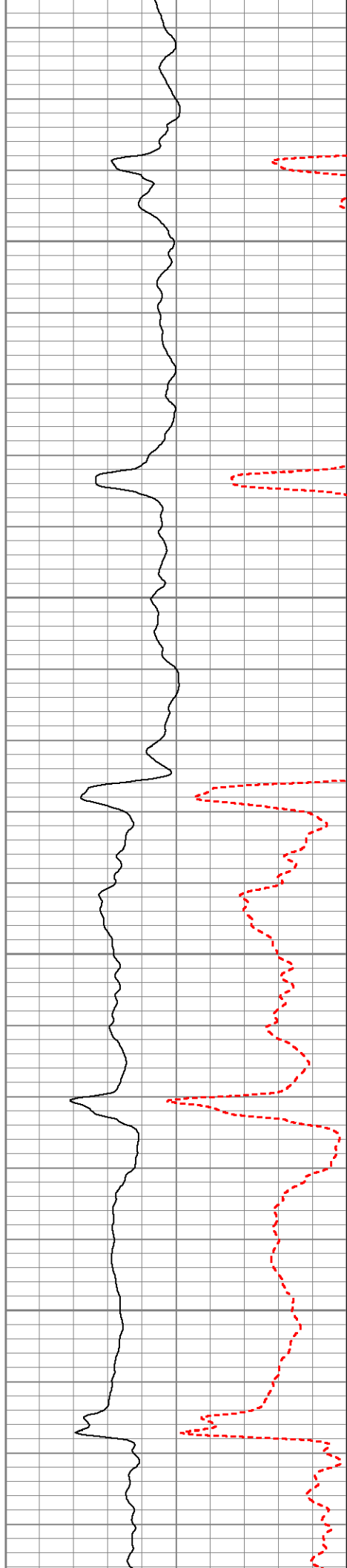


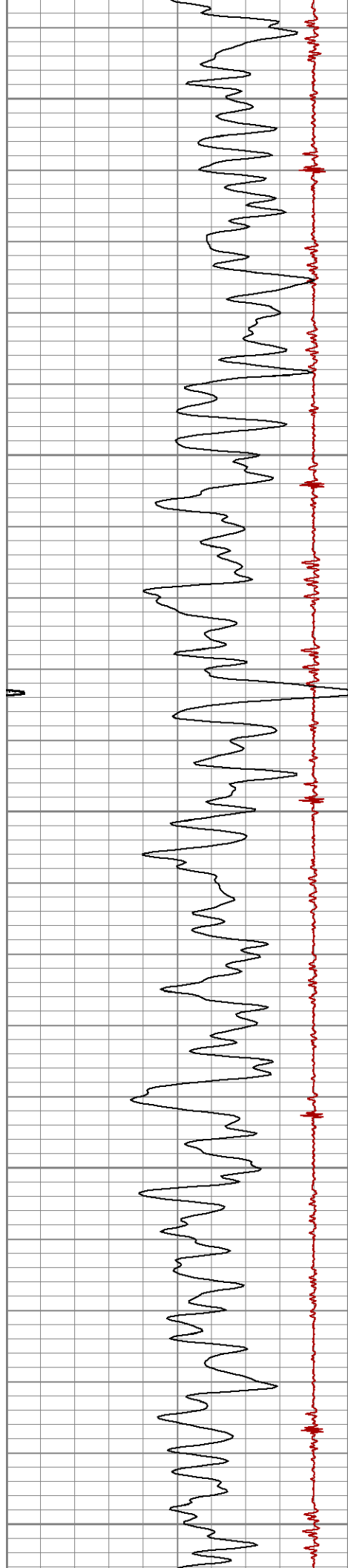
900

950

1000

1050





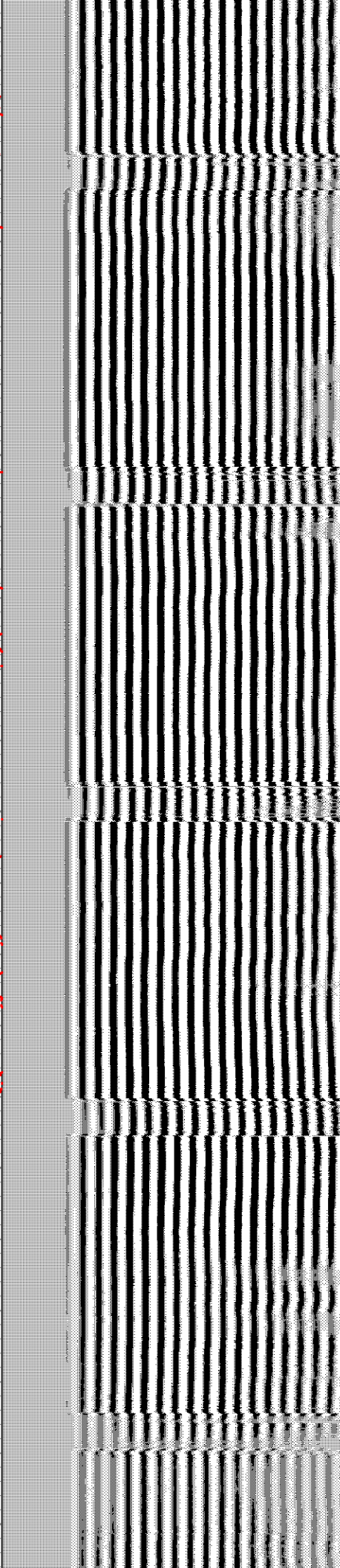
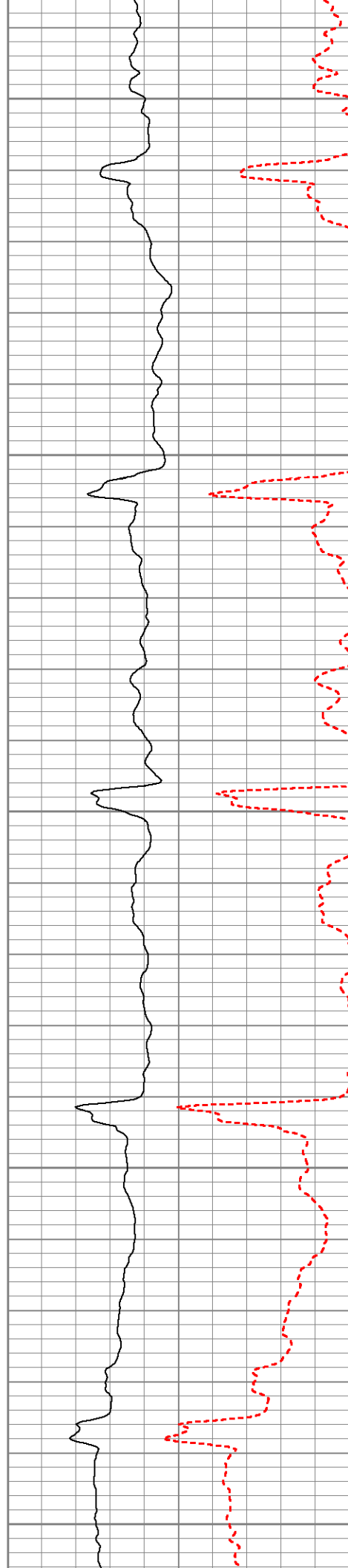
1100

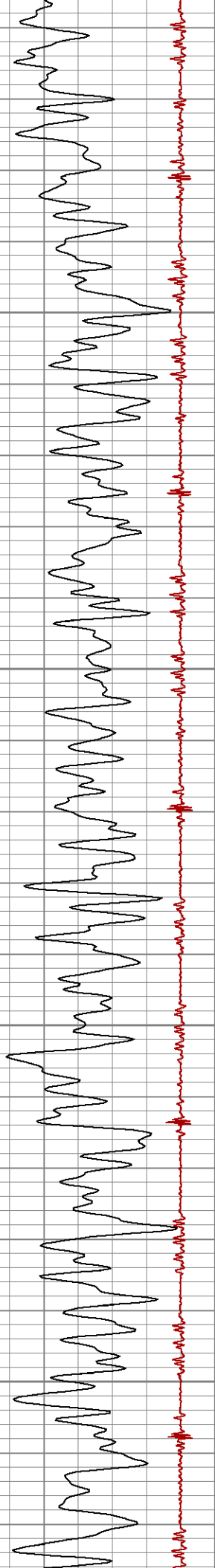
1150

1200

1250

1300



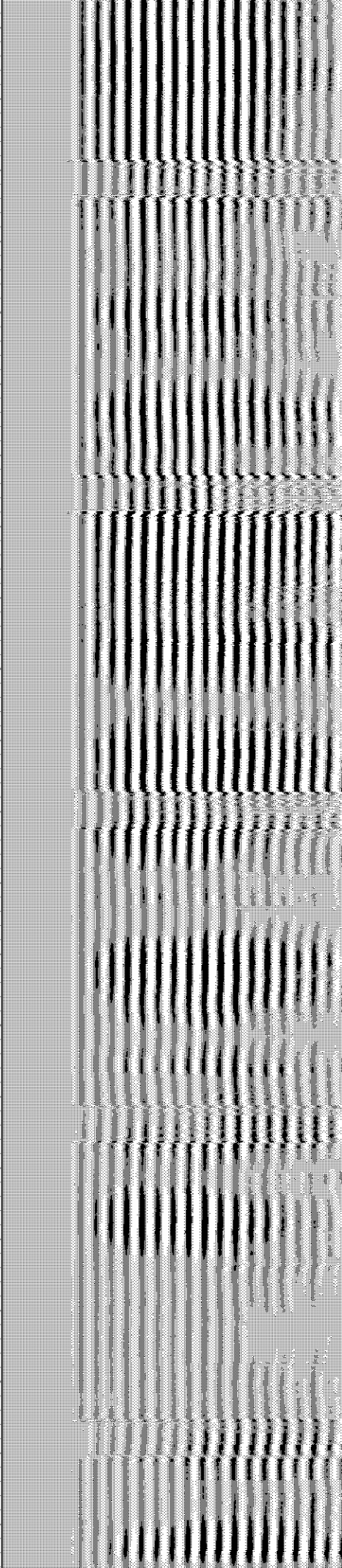


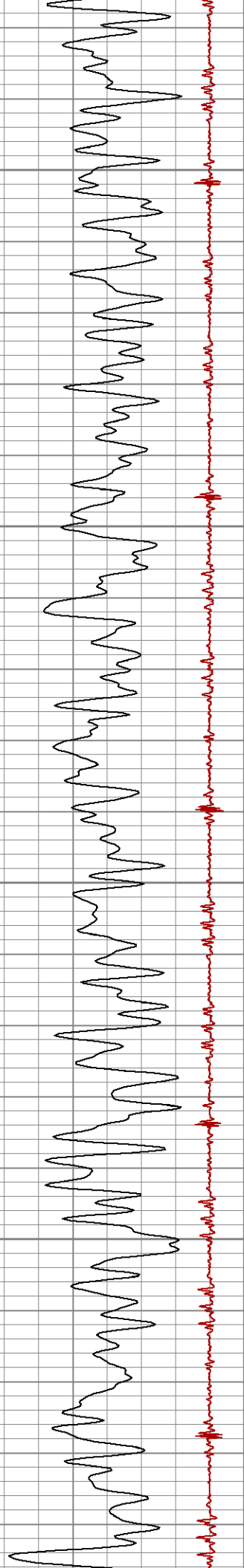
1350

1400

1450

1500



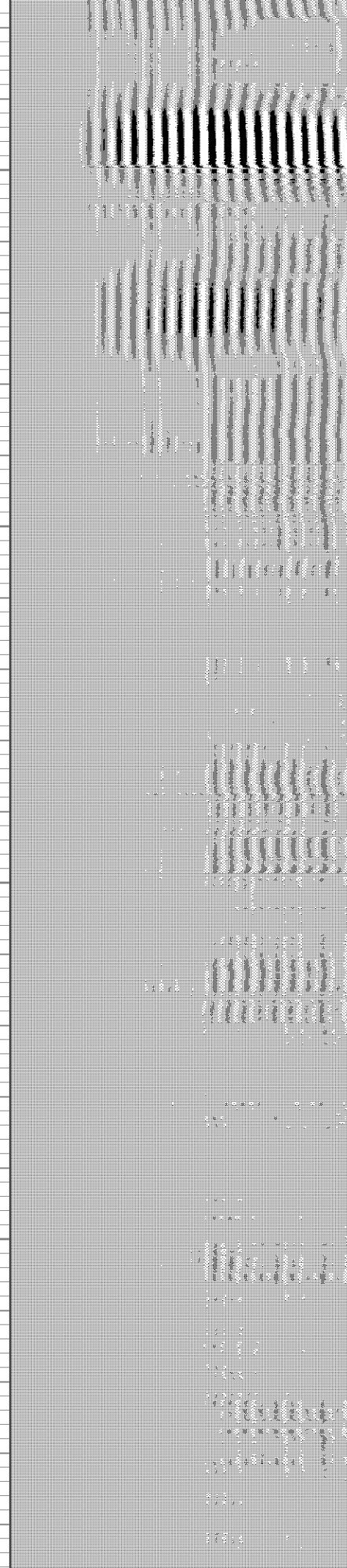
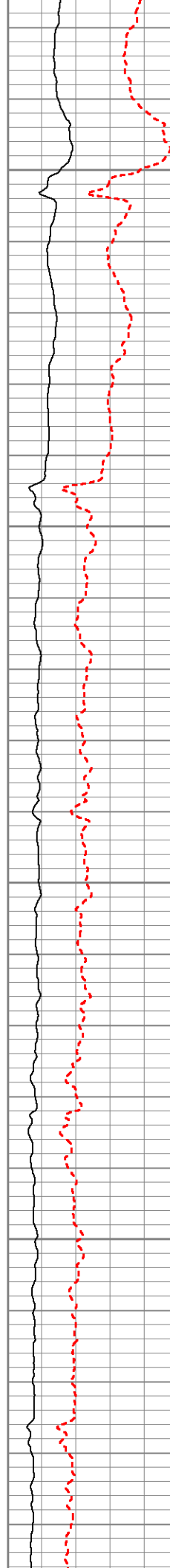


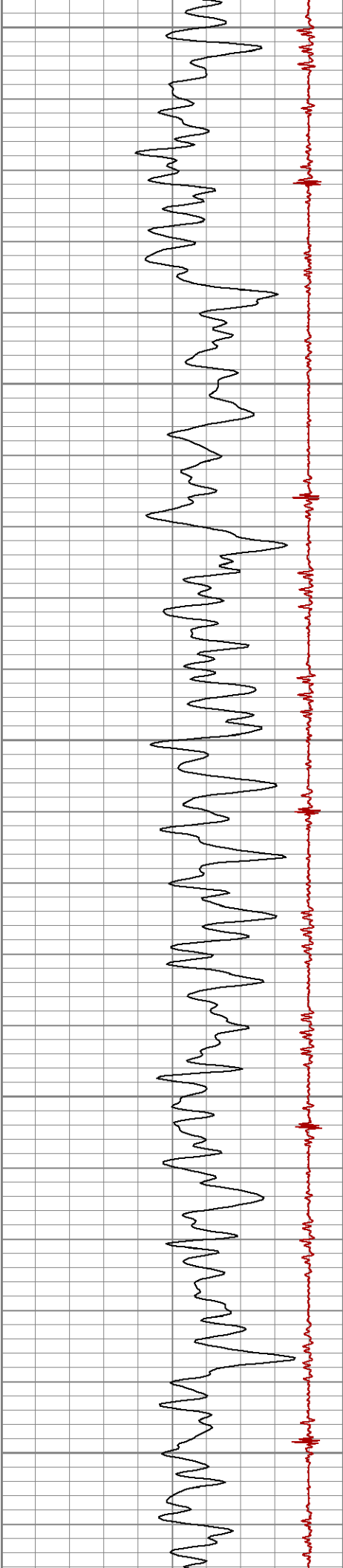
1550

1600

1650

1700





1750

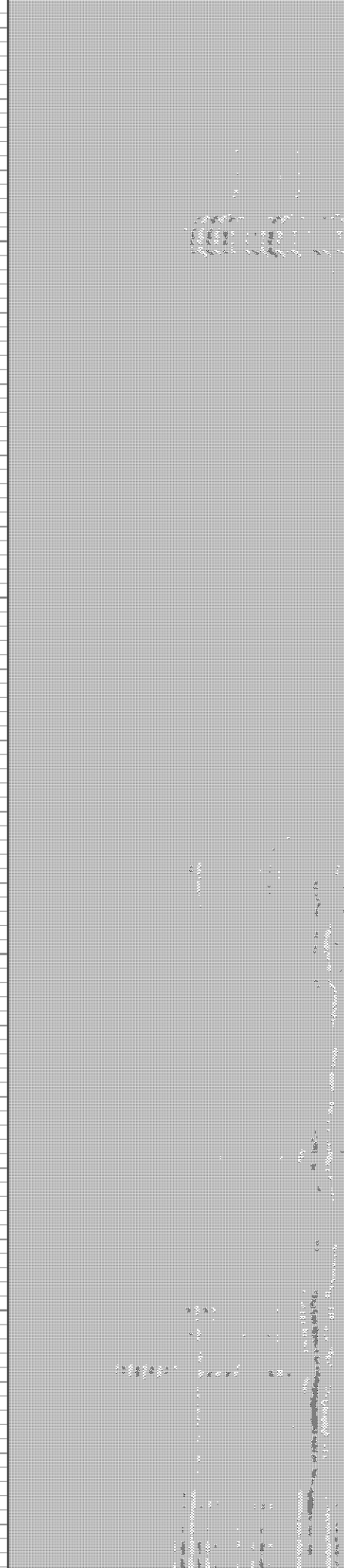
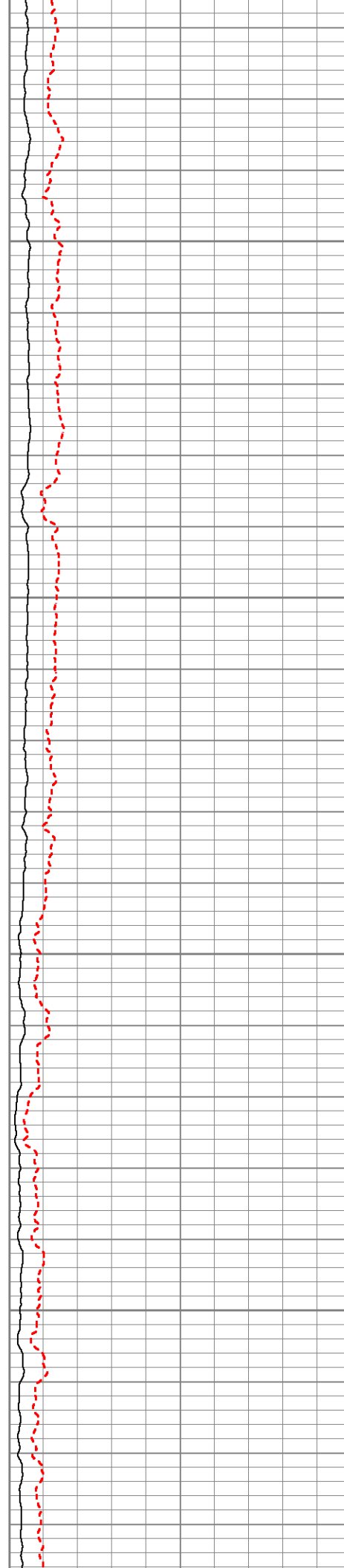
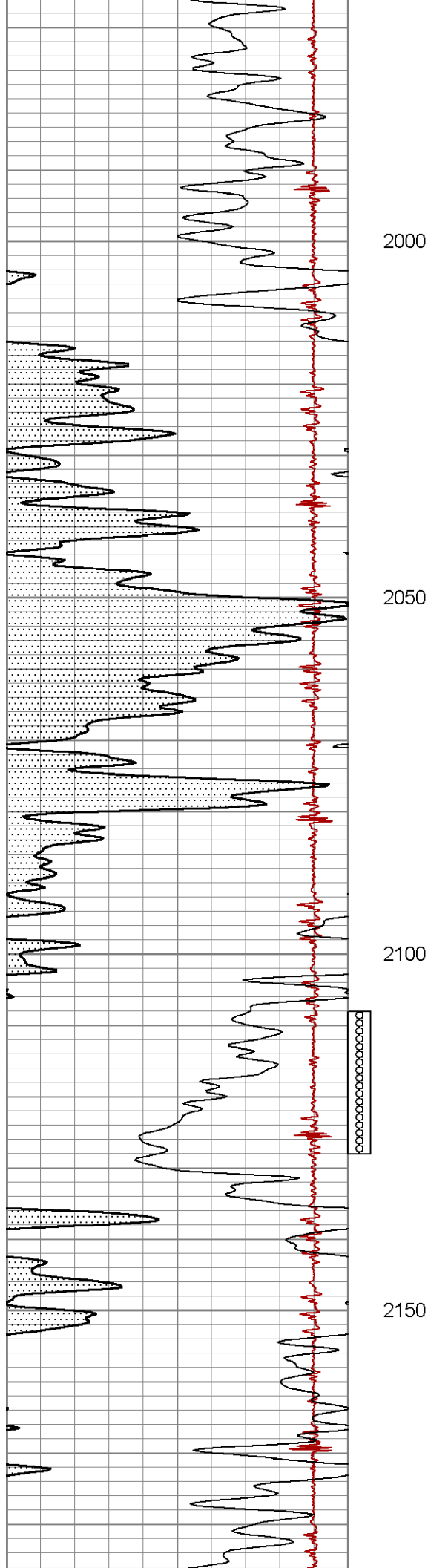
1800

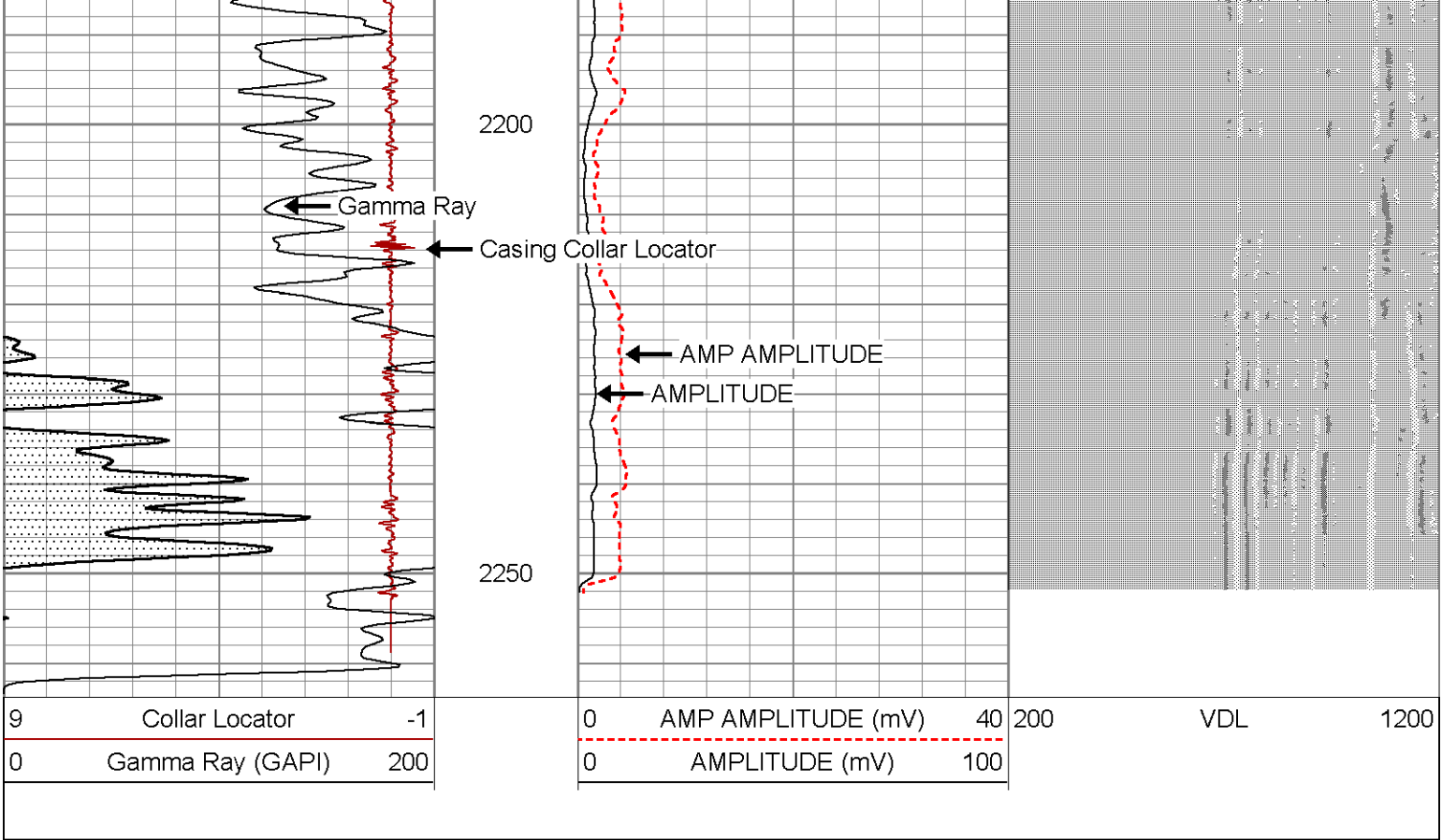
1850

1900

1950







Sensor	Offset (ft)	Schematic	Description	Len (ft)	OD (in)	Wt (lb)
WV3FT	12.96		RBT-Probe (Base) Probe Radii Bond Tool with Digital Telemetry	8.92	2.75	90.00
WVFCAL	12.96					
WVFS1	12.96					
WVFS2	12.96					
WVFS3	12.96					
WVFS4	12.96					
WVFS5	12.96					
WVFS6	12.96					
WVFS7	12.96					
WVFS8	12.96					
WV5FT	11.88					

