




<<< Fold Here >>>

Comments

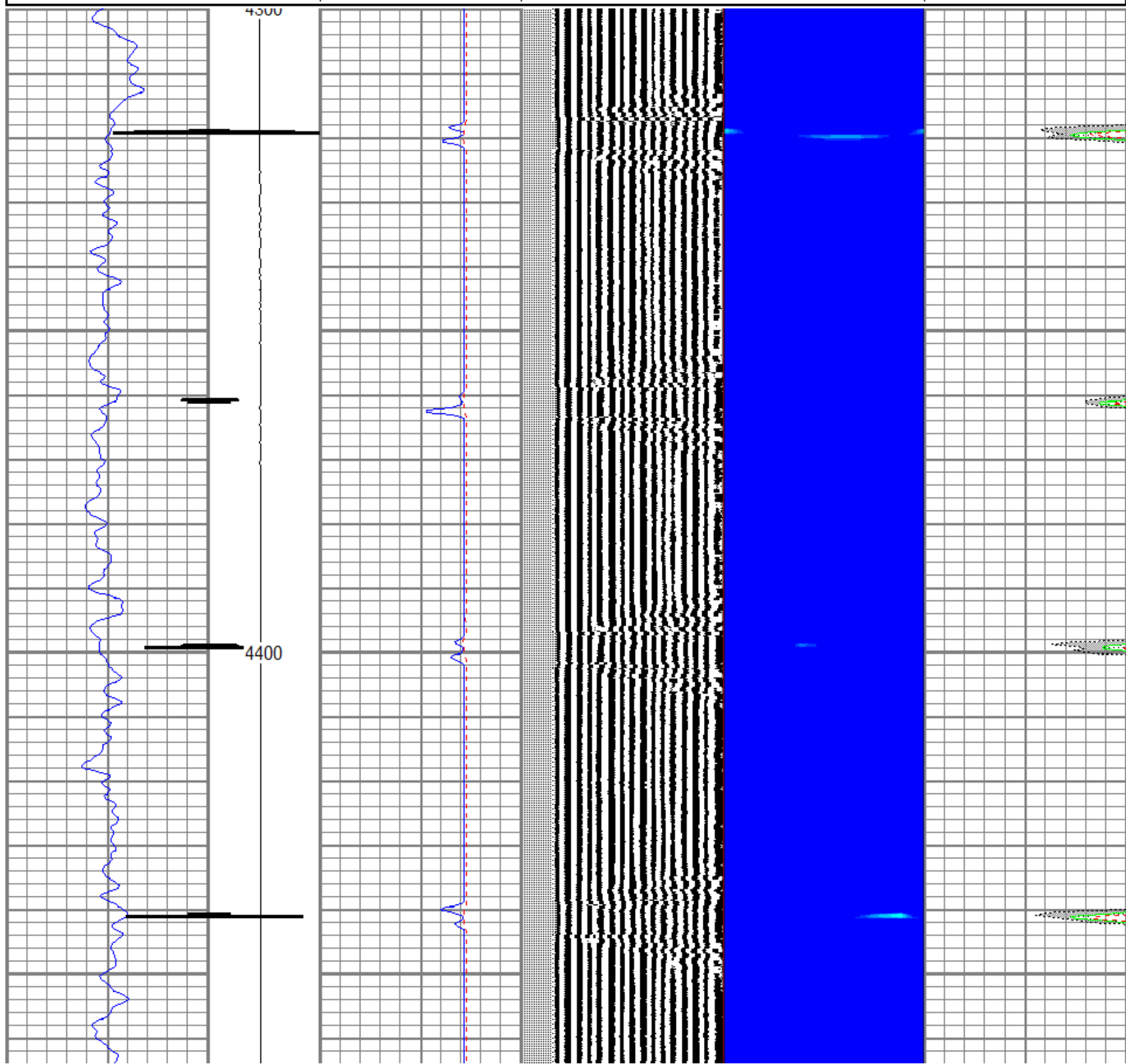
THANK YOU FOR CHOOSING PURE ENERGY FOR YOUR WIRELINE OPPORTUNITY!!

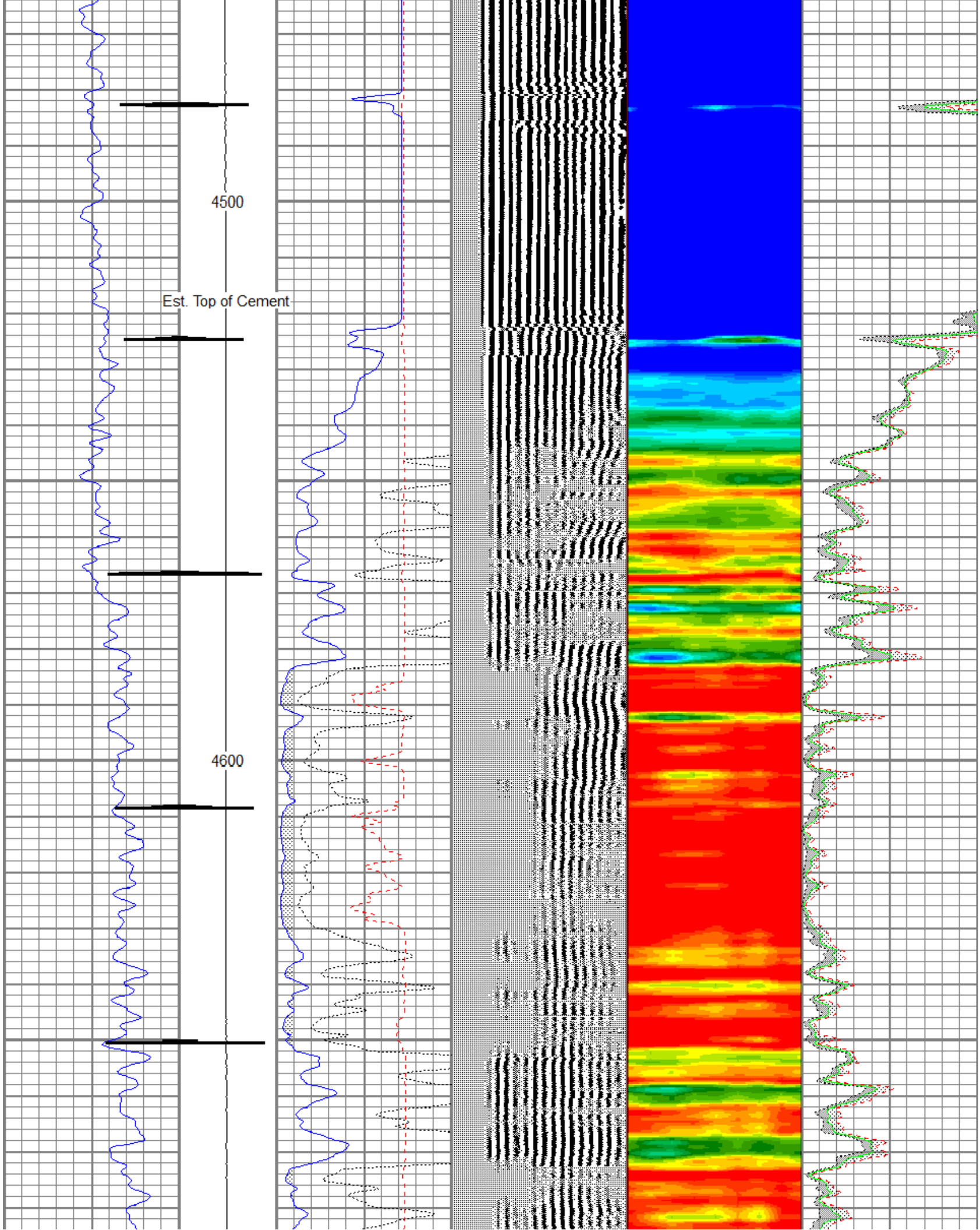
Sensor	Offset (ft)	Schematic	Description	Len (ft)	OD (in)	Wt (lb)
			STNDRD Standard Cable Head	1.00	1.44	10.00

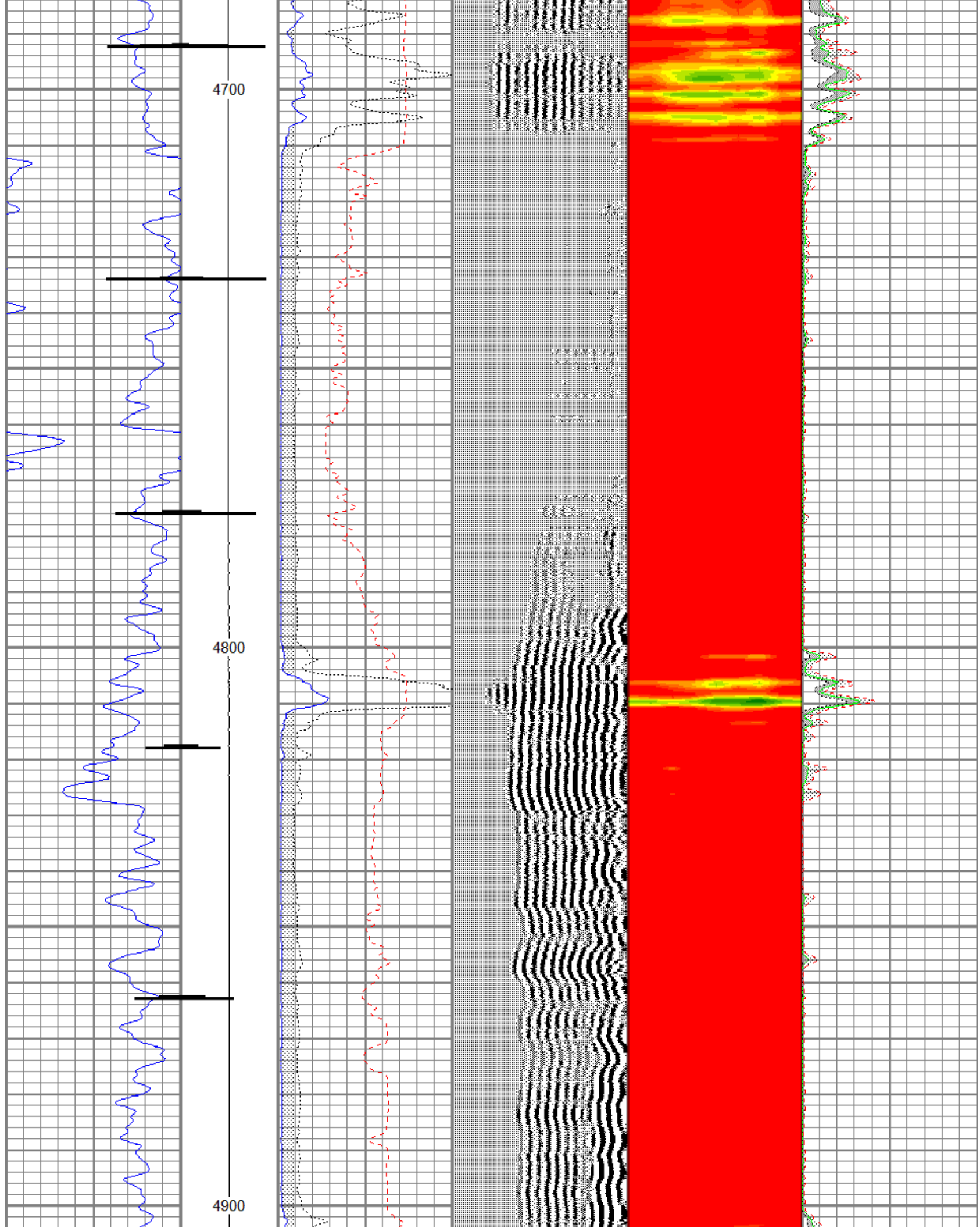
CCL	22.21		CCL-275tekco (2.75TEKCO) 2 3/4 TEK CCL Earth Mag	1.92	2.75	20.00
			SDSCENT Centralizer for testing	2.73	2.75	20.00
TEMP	16.38					
WVFS1	15.00					
WVFS2	15.00					
WVFS3	15.00		275CTEKSECWTWSLCANS-275RIB (1234) 2 3/4" (R.I.B.) TOOL 3FT, 5FT and 8EA RIB SIGNALS 400 DEG "F" @20K PSI With Sliding Cans For Pressure Ballance	9.31	2.75	102.00
WVFS4	15.00					
WVFS5	15.00					
WVFS6	15.00					
WVFS7	15.00					
WVFS8	15.00					
WVF3FT	14.25					
WVF5FT	13.25					
WVFCAL	9.46					
WVFTEMP	9.46					
WVFSYNC	9.46		SDSCENT Centralizer for testing	2.73	2.75	20.00
			GR-Tek-Co (Tek-Co2) 2 3/4 400deg Scint gamma	4.00	2.75	40.00
GR	3.77					
			SDSCENT Centralizer for testing	2.73	2.75	20.00
Dataset: charles_dunning_ikey_1.db: field/well/run1/pass6 Total Length: 24.42 ft Total Weight: 232.00 lb O.D. 2.75 in						

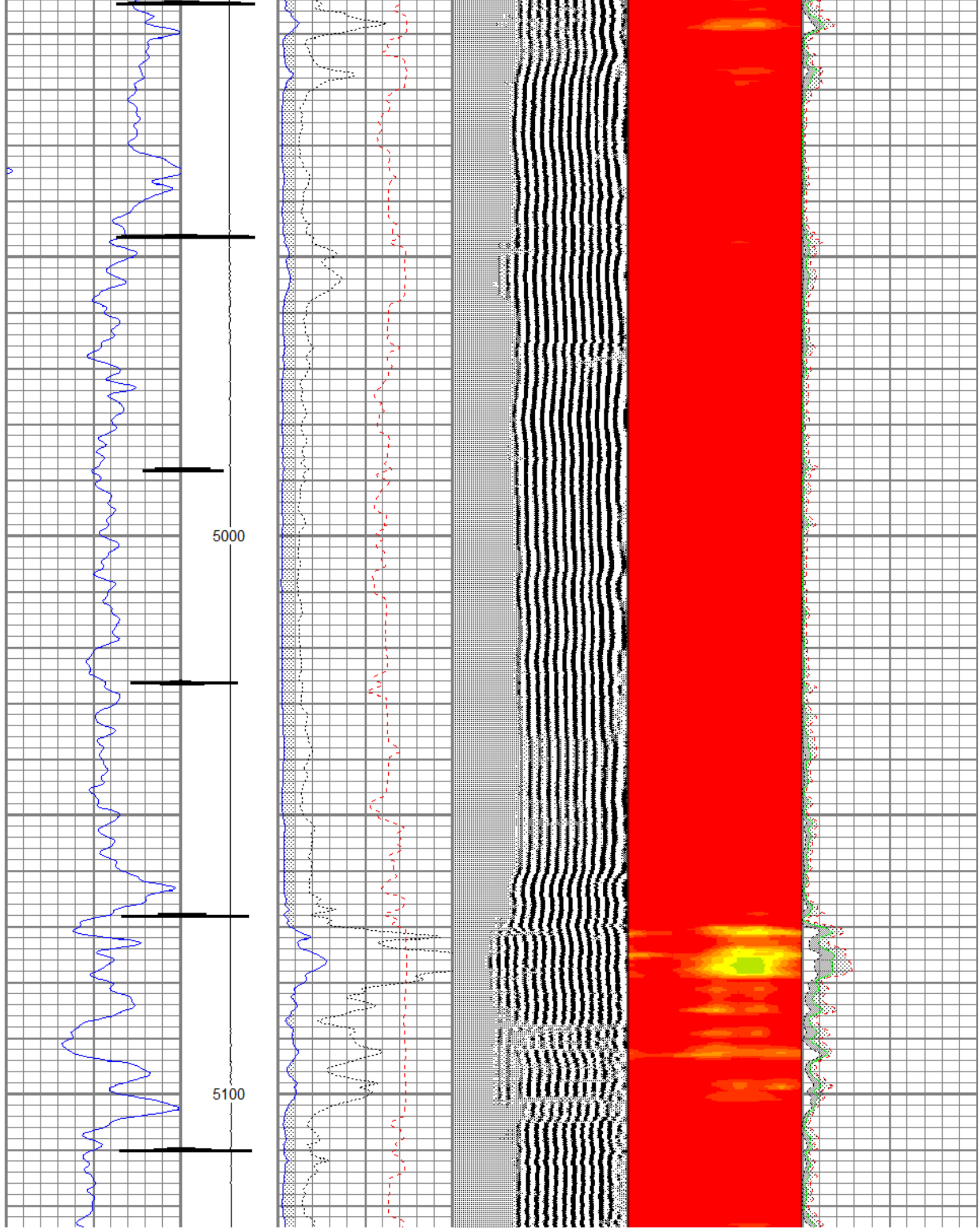
Database File: charles_dunning_ikey_1.db
 Dataset Pathname: pass6
 Presentation Format: rib usa
 Dataset Creation: Mon Nov 26 09:39:04 2012 by Log SCH 111116
 Charted by: Depth in Feet scaled 1:240

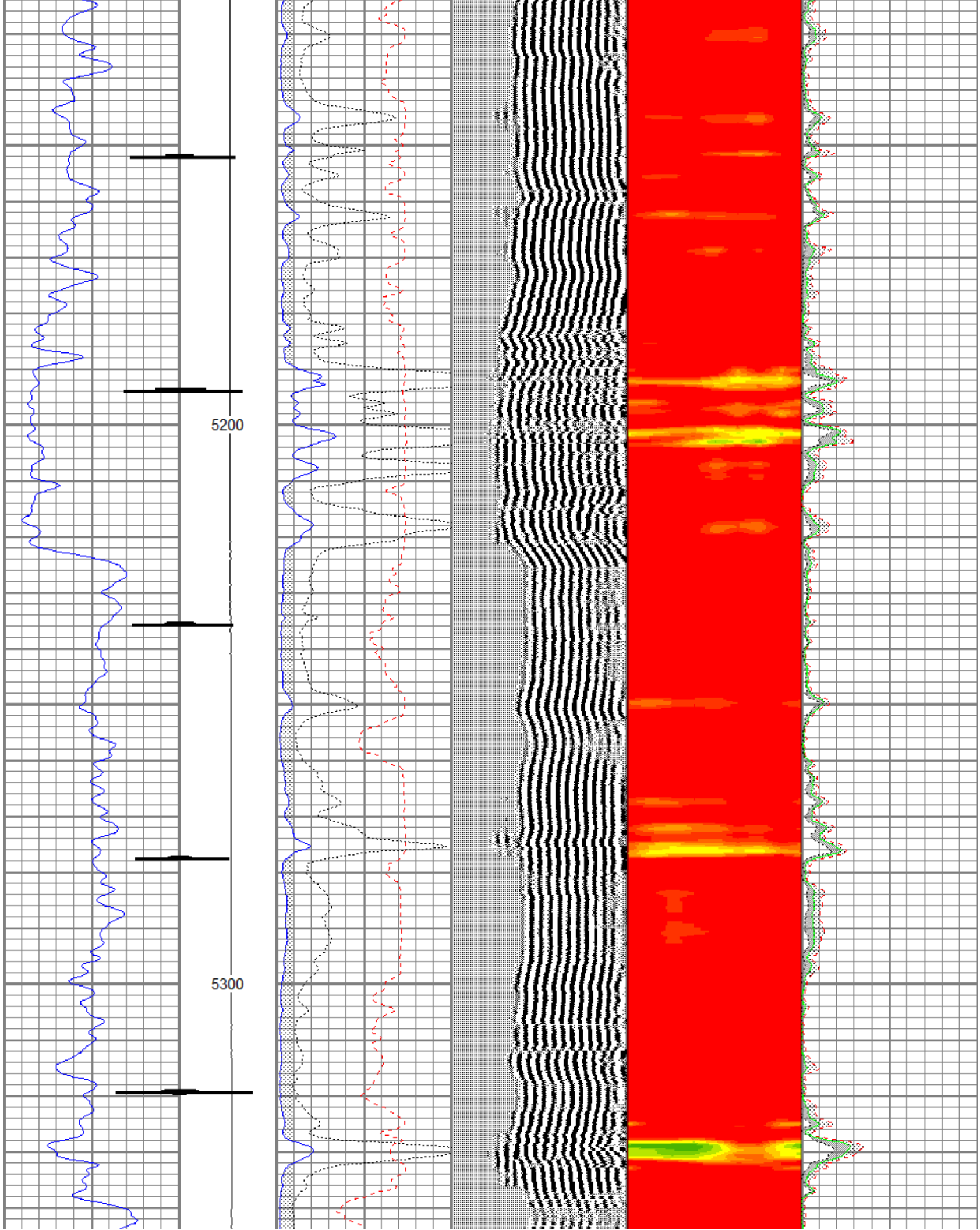
0	Gamma Ray	120	LTEN	0	3' Amplitude (mV)	100	5' Variable Density Log	Sector Map	0	Average Amplitude	100
	Collar Locator		(lb) 2000		3' Amplitude x 5		200			Minimum Amplitude	
					(mV)	20				0	100
					3' Travel Time					Maximum Amplitude	
					650	(usec)	150			0	100

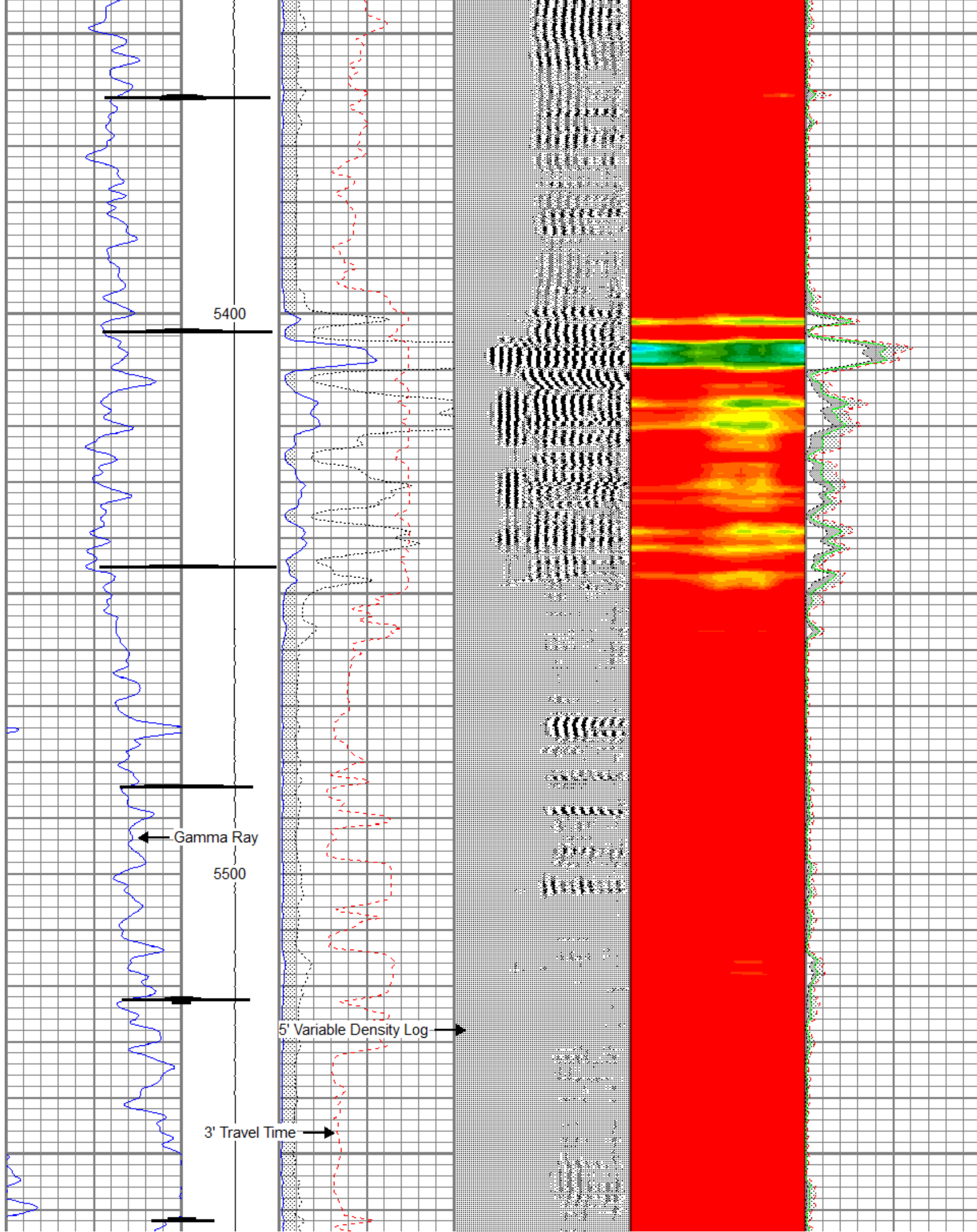


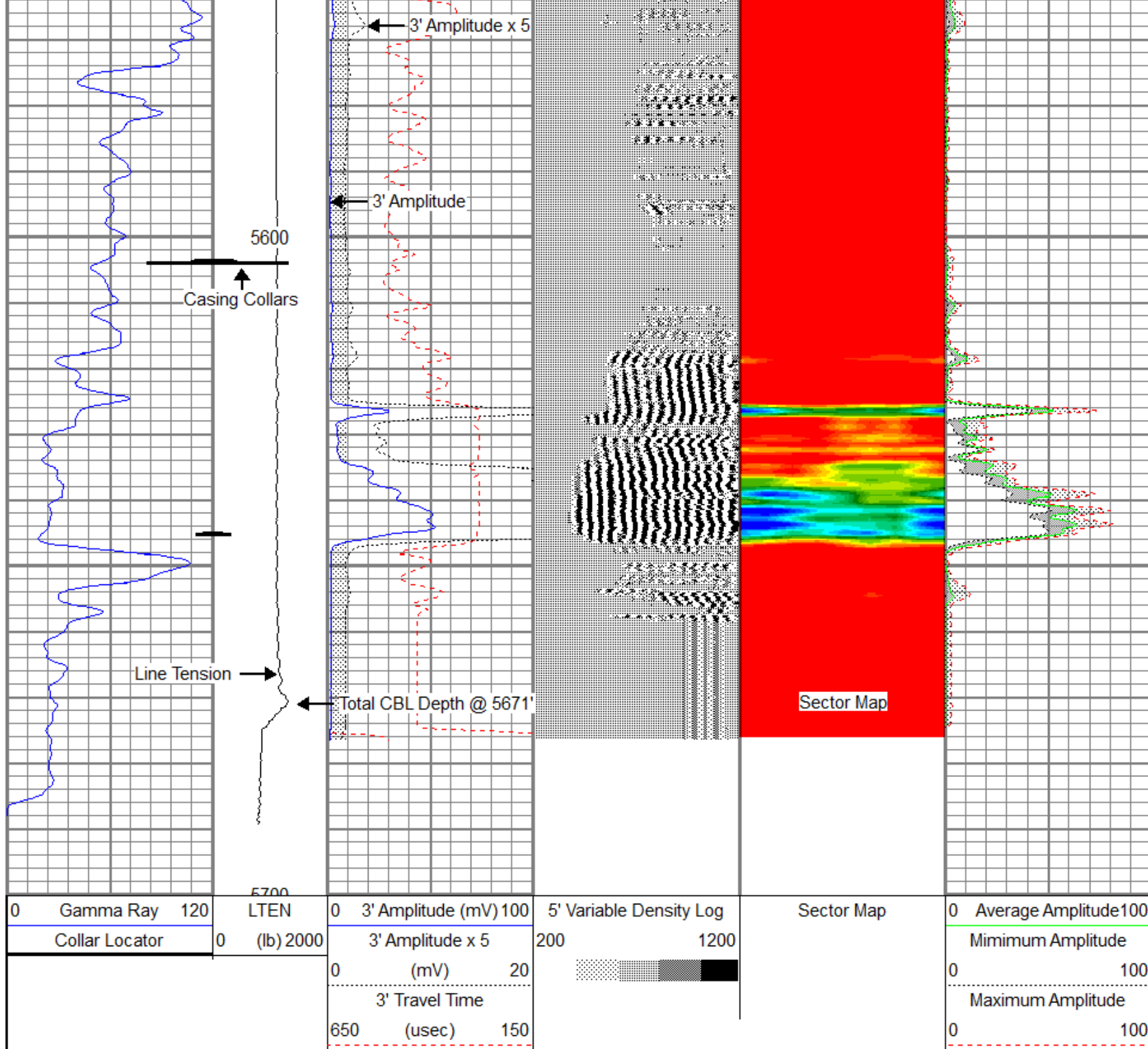






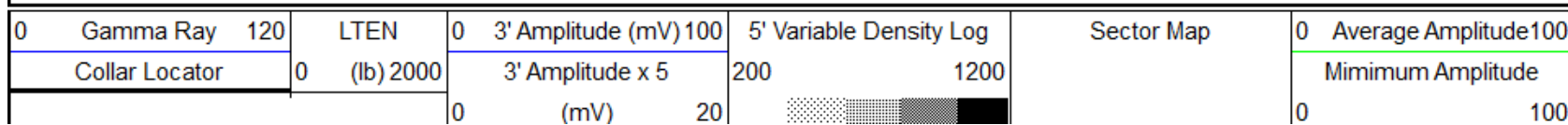


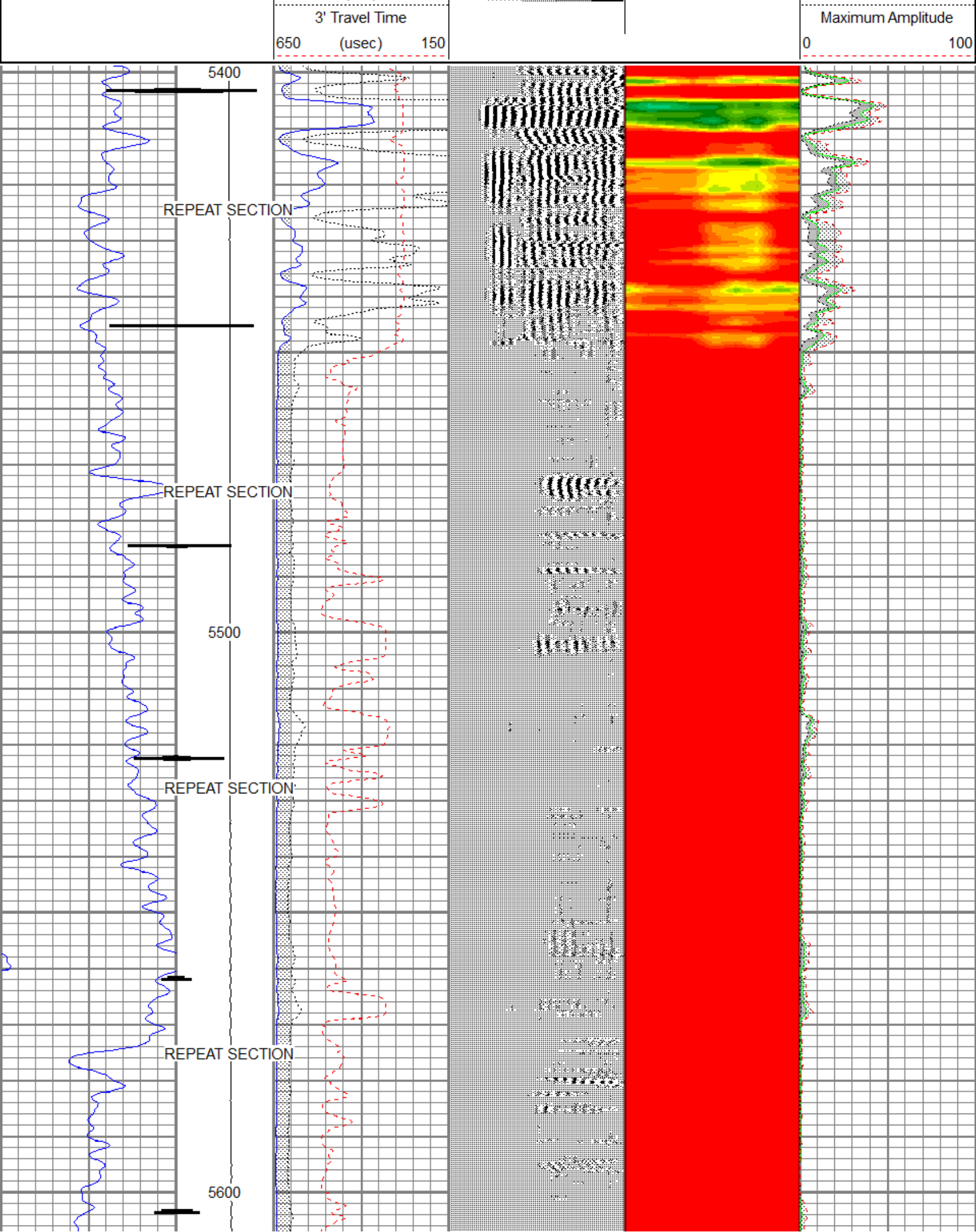


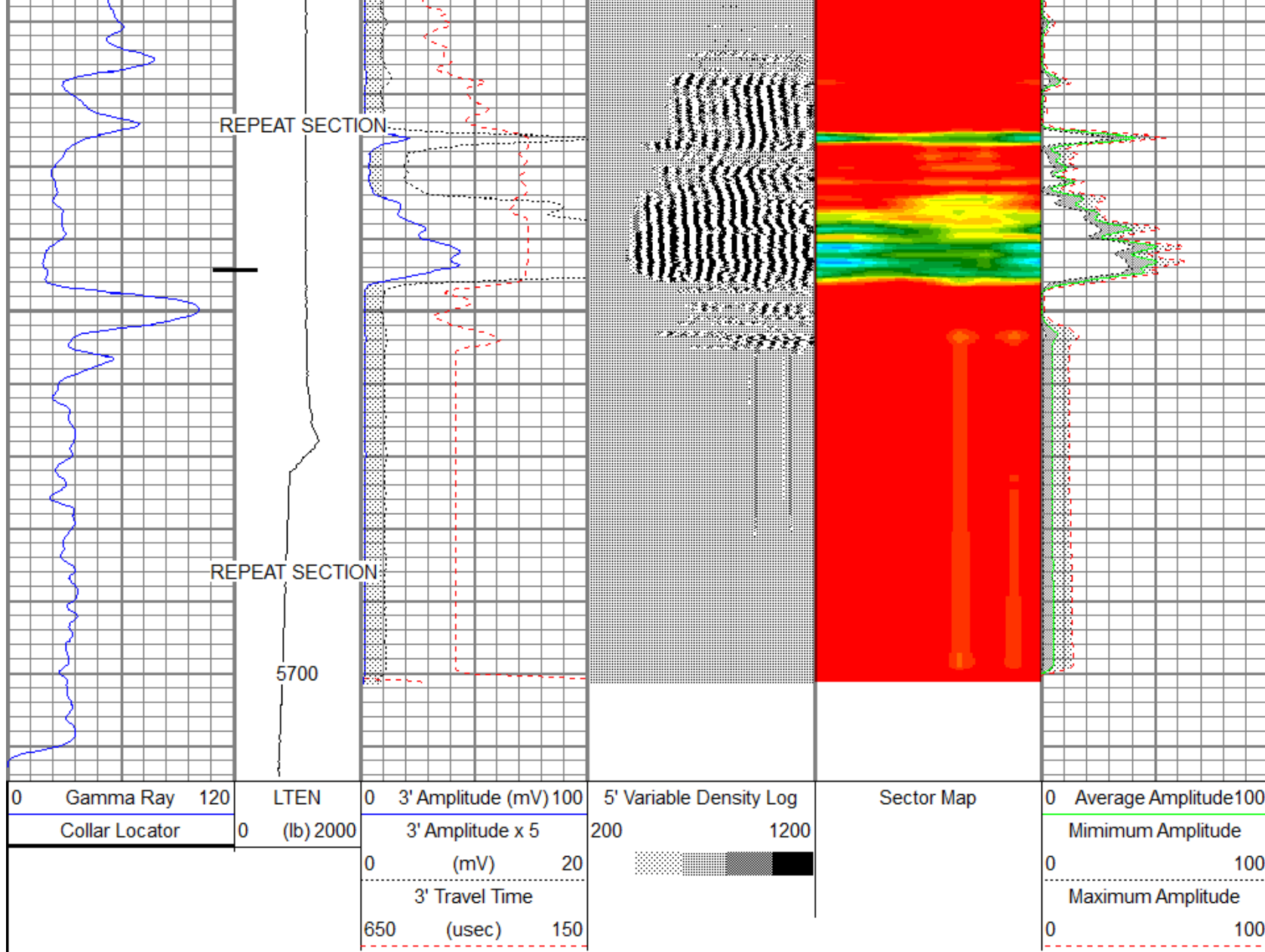


Repeat CBL Pass

Database File: charles_dunning_ikey_1.db
 Dataset Pathname: pass5
 Presentation Format: rib usa
 Dataset Creation: Mon Nov 26 09:30:28 2012 by Log SCH 111116
 Charted by: Depth in Feet scaled 1:240







Calibration Report

Database File: charles_dunning_ikey_1.db
 Dataset Pathname: pass6
 Dataset Creation: Mon Nov 26 09:39:04 2012 by Log SCH 111116

Gamma Ray Calibration Report

Serial Number: Tek-Co2
 Tool Model: Tek-Co
 Performed: Tue Aug 21 11:51:16 2012

Calibrator Value: 1.0

Background Reading: 0.0 cps
 Calibrator Reading: 1.0 cps

Sensitivity: 0.6100 /cps

Segmented Cement Bond Log Calibration Report

Serial Number: 1234
 Tool Model: 275RIB

Calibration Casing Diameter: 5.500 in
 Calibration Depth: 192.693 ft

Master Calibration, performed Mon Nov 26 09:24:45 2012:

	Raw (v)		Calibrated (mv)		Results	
	Zero	Cal	Zero	Cal	Gain	Offset
3'	0.005	2.500	0.000	71.921	28.824	1.500
CAL	0.010	0.962				
5'	0.000	2.500	0.000	71.921	28.771	-0.008
SUM						
S1	0.026	0.801	0.000	100.000	129.061	-3.376
S2	0.026	0.690	0.000	100.000	150.721	-3.950
S3	0.029	0.813	0.000	100.000	127.526	-3.663
S4	0.029	1.219	0.000	100.000	84.045	-2.423
S5	0.021	1.420	0.000	100.000	71.491	-1.505
S6	0.021	1.223	0.000	100.000	83.174	-1.749
S7	0.028	1.358	0.000	100.000	75.146	-2.082
S8	0.027	0.996	0.000	100.000	103.234	-2.818

Internal Reference Calibration, performed Mon Nov 26 08:57:44 2012:

	Raw (v)		Calibrated (v)		Results	
	Zero	Cal	Zero	Cal	Gain	Offset
CAL	0.009	0.981	0.010	0.962	0.979	0.001

Air Zero Calibration, performed Mon Nov 26 08:57:04 2012:

	Raw (v)		Calibrated (v)		Results	
	Zero		Zero		Offset	
3'	0.005		0.000		-0.000	
5'	0.001		0.000		-0.001	
SUM						
S1	0.026		0.000		0.000	
S2	0.025		0.000		0.001	
S3	0.028		0.000		0.001	
S4	0.029		0.000		-0.000	
S5	0.020		0.000		0.001	
S6	0.021		0.000		0.000	
S7	0.028		0.000		-0.000	
S8	0.026		0.000		0.001	

Temperature Calibration Report

Serial Number: 1234
Tool Model: 275RIB
Performed: Wed Sep 17 14:30:05 2008

	Reference	Reading
Low Reference:	75.00 degF	300.00 usec
High Reference:	400.00 degF	1282.00 usec

Gain: 0.33
Offset: 0.00
Delta Spacing 1



Company CHARLES DUNNING
Well IKEY 1
Field ROMAN NOSE NORTH
County ADAMS

Following Superior Table

County
State

ADAMS
COLORADO

Country USA