

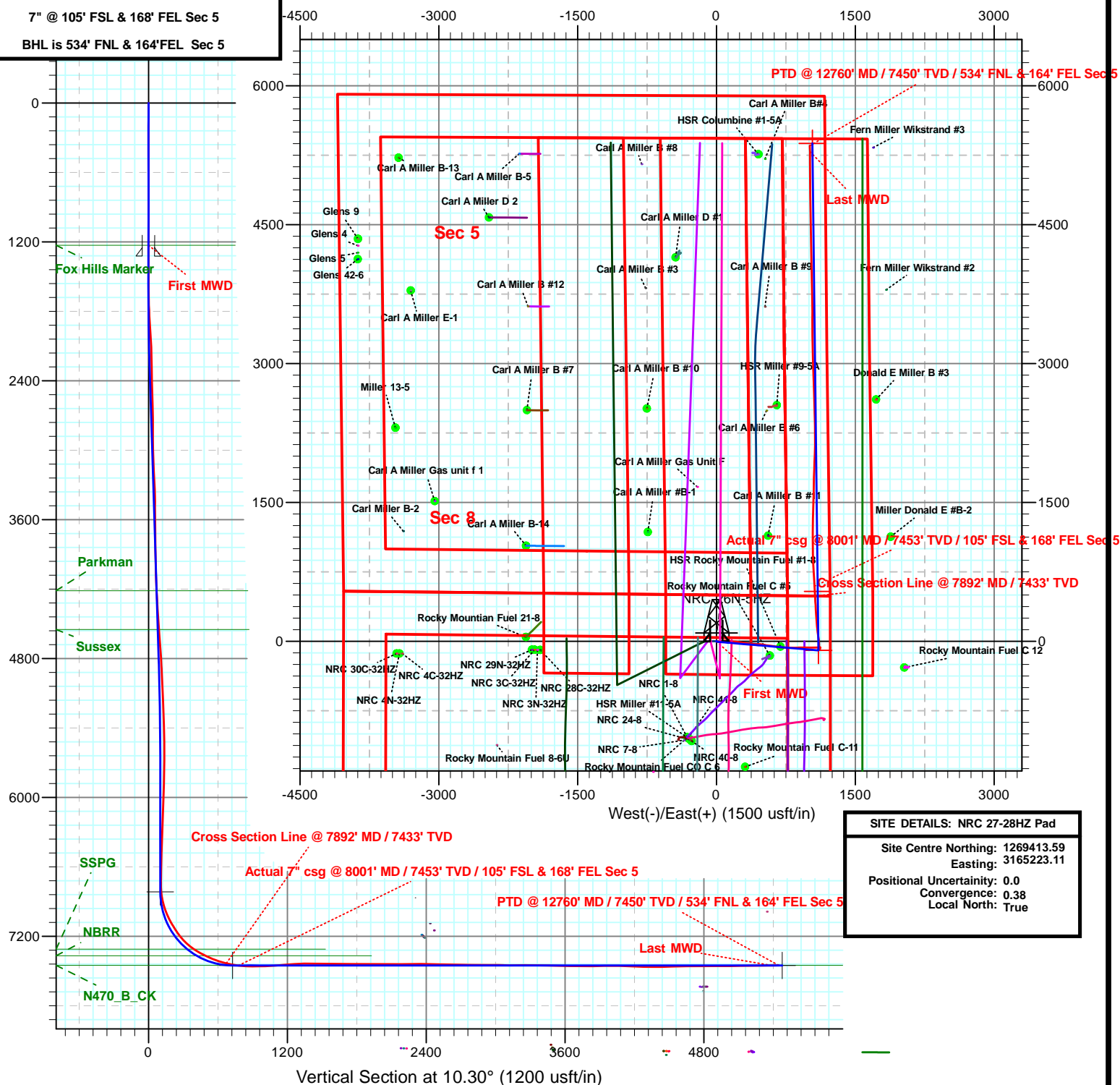
## SECTION DETAILS

MD	Inc	Azi	TVD	+N/-S	+E/-W	Dleg	TFace	VSect	Target
1229.0	0.32	179.98	1229.0	-1.3	-0.6	0.00	0.00	-1.4	
1383.0	0.32	179.98	1383.0	-2.2	-0.6	0.00	0.00	-2.2	
2281.7	18.00	94.82	2266.9	-16.4	138.9	2.00	-86.14	8.7	
4955.7	18.00	94.82	4810.1	-85.9	962.2	0.00	0.00	87.6	
5855.6	0.00	0.38	5695.3	-97.6	1101.9	2.00	180.00	101.0	
6975.6	0.00	0.38	6815.3	-97.6	1101.9	0.00	0.00	101.0	KOP Pln #5 NRC 26N-5HZ
7975.6	90.00	359.33	7451.9	538.9	1094.4	9.00	359.33	725.9	
12814.7	90.00	359.33	7452.0	5377.7	1037.4	0.00	0.00	5476.5	PBHL Pln #5 NRC 26N-5HZ

**SHL is 500' FNL & 1230' FEL Sec 5**

7" @ 105' FSL & 168' FEL Sec 5

**BHL is 534' FNL & 164'FEL Sec 5**



**SITE DETAILS: NRC 27-28HZ Pad**

Site Centre Northing: 1269413.59

Easting: 3165223.11

Positional Uncertainty: 0.0

Convergence: 0.38

Local North: True

# **Anadarko**

**Weld Co., Co (NAD 83)**

**NRC 27-28HZ Pad**

**NRC 26N-5HZ**

**Wellbore #1**

**Design: OH**

## **Standard Survey Report**

**12 June, 2014**

# IDS

## Survey Report

<b>Company:</b>	Anadarko	<b>Local Co-ordinate Reference:</b>	Well NRC 26N-5HZ
<b>Project:</b>	Weld Co., Co (NAD 83)	<b>TVD Reference:</b>	Well @ 5025.0usft (Xtreme 23)
<b>Site:</b>	NRC 27-28HZ Pad	<b>MD Reference:</b>	Well @ 5025.0usft (Xtreme 23)
<b>Well:</b>	NRC 26N-5HZ	<b>North Reference:</b>	True
<b>Wellbore:</b>	Wellbore #1	<b>Survey Calculation Method:</b>	Minimum Curvature
<b>Design:</b>	OH	<b>Database:</b>	EDM 5000.1 Single User Db

<b>Project</b>	Weld Co., Co (NAD 83)		
<b>Map System:</b>	US State Plane 1983	<b>System Datum:</b>	Mean Sea Level
<b>Geo Datum:</b>	North American Datum 1983		
<b>Map Zone:</b>	Colorado Northern Zone		

Site		NRC 27-28HZ Pad			
Site Position:		Northing:	1,269,413.58 usft	Latitude:	40° 4' 17.114 N
From:	Lat/Long	Easting:	3,165,223.11 usft	Longitude:	104° 54' 34.626 W
Position Uncertainty:	0.0 usft	Slot Radius:	13-3/16 "	Grid Convergence:	0.38 °

Well	NRC 26N-5HZ					
Well Position	+N-S	0.0 usft	Northing:	1,269,413.37 usft	Latitude:	40° 4' 17.110 N
	+E-W	0.0 usft	Easting:	3,165,253.12 usft	Longitude:	104° 54' 34.240 W
Position Uncertainty		0.0 usft	Wellhead Elevation:	0.0 usft	Ground Level:	5,009.0 usft

<b>Wellbore</b>	Wellbore #1				
<b>Magnetics</b>	<b>Model Name</b>	<b>Sample Date</b>	<b>Declination (°)</b>	<b>Dip Angle (°)</b>	<b>Field Strength (nT)</b>
	IGRF2010	5/7/2014	8.52	66.66	52,637

<b>Design</b>	OH				
<b>Audit Notes:</b>					
<b>Version:</b>	1.0	<b>Phase:</b>	ACTUAL	<b>Tie On Depth:</b>	0.0
<b>Vertical Section:</b>	<b>Depth From (TVD) (usft)</b>	<b>+N-S (usft)</b>	<b>+E-W (usft)</b>	<b>Direction (°)</b>	
	0.0	0.0	0.0	245.24	

<b>Survey Program</b>	<b>Date</b>	6/12/2014			
<b>From (usft)</b>	<b>To (usft)</b>	<b>Survey (Wellbore)</b>	<b>Tool Name</b>	<b>Description</b>	
100.0	1,229.0	Survey #1 (Wellbore #1)	CT_GYRO_MS	Continuous Gyro Multishot	
1,374.0	12,760.0	Survey #2 (Wellbore #1)	MWD	MWD - Standard	

<b>Survey</b>										
<b>Measured Depth (usft)</b>	<b>Inclination (°)</b>	<b>Azimuth (°)</b>	<b>Vertical Depth (usft)</b>	<b>+N-S (usft)</b>	<b>+E-W (usft)</b>	<b>Vertical Section (usft)</b>	<b>Dogleg Rate (°/100usft)</b>	<b>Build Rate (°/100usft)</b>	<b>Turn Rate (°/100usft)</b>	
0.0	0.00	0.00	0.0	0.0	0.0	0.0	0.00	0.00	0.00	
100.0	0.44	234.95	100.0	-0.2	-0.3	0.4	0.44	0.44	0.00	
200.0	0.51	155.35	200.0	-0.8	-0.4	0.8	0.61	0.07	-79.60	
300.0	0.22	90.44	300.0	-1.3	-0.1	0.6	0.46	-0.29	-64.91	
400.0	0.22	342.20	400.0	-1.1	0.1	0.4	0.36	0.00	-108.24	
500.0	0.31	174.42	500.0	-1.2	0.0	0.5	0.53	0.09	-167.78	
600.0	0.36	121.86	600.0	-1.6	0.3	0.4	0.30	0.05	-52.56	
700.0	0.43	80.92	700.0	-1.7	1.0	-0.2	0.28	0.07	-40.94	
800.0	0.41	14.58	800.0	-1.3	1.4	-0.8	0.46	-0.02	-66.34	
900.0	0.39	314.85	900.0	-0.7	1.3	-0.9	0.40	-0.02	-59.73	

# IDS

## Survey Report

<b>Company:</b>	Anadarko	<b>Local Co-ordinate Reference:</b>	Well NRC 26N-5HZ
<b>Project:</b>	Weld Co., Co (NAD 83)	<b>TVD Reference:</b>	Well @ 5025.0usft (Xtreme 23)
<b>Site:</b>	NRC 27-28HZ Pad	<b>MD Reference:</b>	Well @ 5025.0usft (Xtreme 23)
<b>Well:</b>	NRC 26N-5HZ	<b>North Reference:</b>	True
<b>Wellbore:</b>	Wellbore #1	<b>Survey Calculation Method:</b>	Minimum Curvature
<b>Design:</b>	OH	<b>Database:</b>	EDM 5000.1 Single User Db

Survey									
Measured Depth (usft)	Inclination (°)	Azimuth (°)	Vertical Depth (usft)	+N/-S (usft)	+E/-W (usft)	Vertical Section (usft)	Dogleg Rate (°/100usft)	Build Rate (°/100usft)	Turn Rate (°/100usft)
1,000.0	0.43	273.37	1,000.0	-0.4	0.7	-0.4	0.29	0.04	-41.48
1,100.0	0.52	241.53	1,100.0	-0.6	-0.1	0.4	0.27	0.09	-31.84
1,200.0	0.33	196.83	1,200.0	-1.1	-0.6	1.0	0.37	-0.19	-44.70
1,229.0	0.32	179.98	1,229.0	-1.3	-0.6	1.1	0.33	-0.03	-58.10
<b>First MWD</b>									
1,374.0	0.20	330.98	1,374.0	-1.5	-0.7	1.3	0.35	-0.08	104.14
1,467.0	2.50	91.58	1,466.9	-1.4	1.2	-0.5	2.80	2.47	129.68
1,565.0	4.90	97.78	1,564.7	-2.0	7.5	-6.0	2.48	2.45	6.33
1,657.0	5.80	90.78	1,656.3	-2.6	16.0	-13.5	1.21	0.98	-7.61
1,748.0	7.20	86.38	1,746.7	-2.3	26.3	-22.9	1.63	1.54	-4.84
1,840.0	8.60	79.88	1,837.9	-0.7	38.8	-35.0	1.80	1.52	-7.07
1,932.0	10.60	77.38	1,928.6	2.3	53.9	-49.9	2.22	2.17	-2.72
2,024.0	11.60	84.38	2,018.9	5.1	71.3	-66.9	1.82	1.09	7.61
2,115.0	12.90	90.28	2,107.8	5.9	90.6	-84.8	1.98	1.43	6.48
2,207.0	13.80	92.58	2,197.3	5.4	111.8	-103.8	1.14	0.98	2.50
2,300.0	13.90	97.58	2,287.6	3.4	134.0	-123.1	1.29	0.11	5.38
2,391.0	15.20	97.38	2,375.7	0.4	156.7	-142.4	1.43	1.43	-0.22
2,484.0	16.10	95.48	2,465.2	-2.4	181.6	-163.9	1.11	0.97	-2.04
2,575.0	16.40	93.38	2,552.6	-4.3	207.0	-186.1	0.72	0.33	-2.31
2,668.0	16.60	95.88	2,641.8	-6.5	233.3	-209.1	0.79	0.22	2.69
2,760.0	17.10	99.98	2,729.8	-10.2	259.7	-231.6	1.40	0.54	4.46
2,851.0	18.50	99.48	2,816.5	-14.9	287.1	-254.5	1.55	1.54	-0.55
2,944.0	20.30	99.88	2,904.2	-20.1	317.6	-280.0	1.94	1.94	0.43
3,037.0	19.50	98.18	2,991.6	-25.0	348.8	-306.3	1.06	-0.86	-1.83
3,130.0	18.70	93.68	3,079.5	-28.2	379.1	-332.4	1.80	-0.86	-4.84
3,221.0	18.90	91.88	3,165.7	-29.6	408.3	-358.4	0.67	0.22	-1.98
3,314.0	19.50	89.68	3,253.5	-30.0	438.9	-386.0	1.01	0.65	-2.37
3,399.0	19.60	94.38	3,333.6	-31.0	467.3	-411.4	1.85	0.12	5.53
3,484.0	18.80	99.38	3,413.9	-34.4	495.1	-435.2	2.15	-0.94	5.88
3,570.0	18.40	99.98	3,495.4	-39.0	522.1	-457.8	0.52	-0.47	0.70
3,655.0	18.80	96.88	3,575.9	-42.9	548.9	-480.5	1.25	0.47	-3.65
3,740.0	18.10	99.48	3,656.6	-46.8	575.5	-503.1	1.27	-0.82	3.06
3,825.0	18.90	97.48	3,737.2	-50.7	602.2	-525.6	1.20	0.94	-2.35
3,910.0	18.90	97.68	3,817.6	-54.4	629.5	-548.9	0.08	0.00	0.24
3,995.0	18.30	99.08	3,898.2	-58.3	656.3	-571.6	0.88	-0.71	1.65
4,081.0	19.10	97.68	3,979.6	-62.3	683.6	-594.7	1.07	0.93	-1.63
4,166.0	19.30	94.78	4,059.9	-65.3	711.4	-618.6	1.15	0.24	-3.41
4,251.0	18.90	93.88	4,140.2	-67.5	739.1	-642.9	0.58	-0.47	-1.06
4,336.0	19.30	91.88	4,220.5	-68.8	766.9	-667.6	0.90	0.47	-2.35
4,422.0	20.80	90.58	4,301.3	-69.5	796.4	-694.1	1.82	1.74	-1.51
4,507.0	20.00	92.38	4,381.0	-70.2	826.0	-720.7	1.20	-0.94	2.12
4,592.0	17.10	87.98	4,461.6	-70.4	853.0	-745.1	3.79	-3.41	-5.18
4,677.0	16.00	85.58	4,543.0	-69.0	877.2	-767.6	1.52	-1.29	-2.82

# IDS Survey Report

<b>Company:</b>	Anadarko	<b>Local Co-ordinate Reference:</b>	Well NRC 26N-5HZ
<b>Project:</b>	Weld Co., Co (NAD 83)	<b>TVD Reference:</b>	Well @ 5025.0usft (Xtreme 23)
<b>Site:</b>	NRC 27-28HZ Pad	<b>MD Reference:</b>	Well @ 5025.0usft (Xtreme 23)
<b>Well:</b>	NRC 26N-5HZ	<b>North Reference:</b>	True
<b>Wellbore:</b>	Wellbore #1	<b>Survey Calculation Method:</b>	Minimum Curvature
<b>Design:</b>	OH	<b>Database:</b>	EDM 5000.1 Single User Db

Survey									
Measured Depth (usft)	Inclination (°)	Azimuth (°)	Vertical Depth (usft)	+N/-S (usft)	+E/-W (usft)	Vertical Section (usft)	Dogleg Rate (°/100usft)	Build Rate (°/100usft)	Turn Rate (°/100usft)
4,763.0	18.00	87.18	4,625.3	-67.5	902.2	-791.1	2.39	2.33	1.86
4,848.0	21.00	89.28	4,705.4	-66.6	930.6	-817.2	3.62	3.53	2.47
4,933.0	21.60	91.28	4,784.6	-66.8	961.5	-845.1	1.11	0.71	2.35
5,019.0	19.60	91.28	4,865.1	-67.5	991.7	-872.3	2.33	-2.33	0.00
5,104.0	16.90	90.88	4,945.8	-68.0	1,018.3	-896.3	3.18	-3.18	-0.47
5,189.0	13.70	90.08	5,027.8	-68.2	1,040.8	-916.6	3.77	-3.76	-0.94
5,274.0	11.50	88.58	5,110.7	-68.0	1,059.3	-933.5	2.62	-2.59	-1.76
5,359.0	10.30	87.78	5,194.2	-67.5	1,075.4	-948.3	1.42	-1.41	-0.94
5,445.0	8.40	87.18	5,279.1	-66.9	1,089.3	-961.2	2.21	-2.21	-0.70
5,530.0	6.30	84.48	5,363.4	-66.1	1,100.2	-971.4	2.50	-2.47	-3.18
5,615.0	4.80	83.38	5,448.0	-65.3	1,108.3	-979.2	1.77	-1.76	-1.29
5,700.0	3.40	83.98	5,532.7	-64.6	1,114.4	-984.9	1.65	-1.65	0.71
5,785.0	2.80	81.58	5,617.6	-64.0	1,118.9	-989.3	0.72	-0.71	-2.82
5,871.0	1.60	130.98	5,703.5	-64.5	1,121.9	-991.8	2.49	-1.40	57.44
5,956.0	2.10	181.48	5,788.5	-66.8	1,122.8	-991.6	1.93	0.59	59.41
6,041.0	1.90	196.68	5,873.5	-69.8	1,122.3	-990.0	0.66	-0.24	17.88
6,127.0	1.60	203.18	5,959.4	-72.2	1,121.5	-988.1	0.42	-0.35	7.56
6,212.0	2.60	191.78	6,044.4	-75.2	1,120.6	-986.1	1.27	1.18	-13.41
6,297.0	2.20	190.58	6,129.3	-78.7	1,119.9	-984.0	0.47	-0.47	-1.41
6,382.0	1.60	212.48	6,214.2	-81.3	1,119.0	-982.1	1.10	-0.71	25.76
6,467.0	1.10	229.78	6,299.2	-82.8	1,117.7	-980.3	0.75	-0.59	20.35
6,553.0	2.50	217.08	6,385.2	-84.9	1,115.9	-977.9	1.68	1.63	-14.77
6,638.0	2.30	218.98	6,470.1	-87.7	1,113.8	-974.7	0.25	-0.24	2.24
6,723.0	2.20	209.38	6,555.0	-90.4	1,111.9	-971.8	0.46	-0.12	-11.29
6,808.0	1.10	207.48	6,640.0	-92.6	1,110.7	-969.9	1.30	-1.29	-2.24
6,893.0	0.90	221.88	6,725.0	-93.8	1,109.9	-968.6	0.38	-0.24	16.94
6,977.0	4.70	346.48	6,808.9	-90.9	1,108.6	-968.7	6.27	4.52	148.33
7,019.0	9.00	352.58	6,850.6	-86.0	1,107.8	-970.0	10.37	10.24	14.52
7,062.0	12.50	358.78	6,892.8	-78.0	1,107.3	-972.9	8.56	8.14	14.42
7,104.0	16.60	3.38	6,933.5	-67.5	1,107.5	-977.5	10.13	9.76	10.95
7,147.0	20.00	3.68	6,974.3	-54.0	1,108.4	-983.9	7.91	7.91	0.70
7,189.0	23.60	1.18	7,013.3	-38.4	1,109.0	-991.0	8.85	8.57	-5.95
7,232.0	27.30	357.48	7,052.1	-19.9	1,108.7	-998.5	9.36	8.60	-8.60
7,275.0	31.00	354.18	7,089.7	0.9	1,107.2	-1,005.8	9.38	8.60	-7.67
7,318.0	33.90	350.68	7,125.9	23.8	1,104.1	-1,012.6	8.03	6.74	-8.14
7,361.0	35.60	351.58	7,161.3	48.0	1,100.3	-1,019.3	4.13	3.95	2.09
7,403.0	39.00	351.98	7,194.7	73.2	1,096.7	-1,026.6	8.12	8.10	0.95
7,446.0	43.10	353.18	7,227.1	101.2	1,093.1	-1,035.0	9.71	9.53	2.79
7,488.0	47.60	353.68	7,256.6	130.9	1,089.7	-1,044.3	10.75	10.71	1.19
7,531.0	53.10	354.18	7,284.0	163.8	1,086.2	-1,054.9	12.82	12.79	1.16
7,574.0	56.40	355.78	7,308.8	198.8	1,083.1	-1,066.8	8.25	7.67	3.72
7,616.0	59.40	356.18	7,331.2	234.2	1,080.6	-1,079.4	7.19	7.14	0.95
7,659.0	62.00	356.48	7,352.2	271.7	1,078.2	-1,092.9	6.08	6.05	0.70

# IDS

## Survey Report

<b>Company:</b>	Anadarko	<b>Local Co-ordinate Reference:</b>	Well NRC 26N-5HZ
<b>Project:</b>	Weld Co., Co (NAD 83)	<b>TVD Reference:</b>	Well @ 5025.0usft (Xtreme 23)
<b>Site:</b>	NRC 27-28HZ Pad	<b>MD Reference:</b>	Well @ 5025.0usft (Xtreme 23)
<b>Well:</b>	NRC 26N-5HZ	<b>North Reference:</b>	True
<b>Wellbore:</b>	Wellbore #1	<b>Survey Calculation Method:</b>	Minimum Curvature
<b>Design:</b>	OH	<b>Database:</b>	EDM 5000.1 Single User Db

Survey										
Measured Depth (usft)	Inclination (°)	Azimuth (°)	Vertical Depth (usft)	+N/-S (usft)	+E/-W (usft)	Vertical Section (usft)	Dogleg Rate (°/100usft)	Build Rate (°/100usft)	Turn Rate (°/100usft)	
7,701.0	64.90	356.58	7,371.0	309.2	1,076.0	-1,106.5	6.91	6.90	0.24	
7,744.0	67.70	356.48	7,388.3	348.5	1,073.6	-1,120.8	6.52	6.51	-0.23	
7,787.0	70.80	356.78	7,403.5	388.6	1,071.2	-1,135.5	7.24	7.21	0.70	
7,829.0	73.20	357.38	7,416.5	428.5	1,069.2	-1,150.3	5.87	5.71	1.43	
7,872.0	75.40	356.38	7,428.1	469.8	1,066.9	-1,165.6	5.58	5.12	-2.33	
7,891.5	76.05	355.96	7,432.9	488.7	1,065.7	-1,172.4	3.93	3.33	-2.15	
<b>Cross Section Line @ 7892' MD / 7433' TVD</b>										
7,914.0	76.80	355.48	7,438.2	510.5	1,064.0	-1,180.0	3.93	3.34	-2.14	
7,934.0	78.80	356.58	7,442.4	530.0	1,062.7	-1,186.9	11.35	10.00	5.50	
8,001.0	83.36	356.97	7,452.8	596.1	1,059.0	-1,211.2	6.84	6.81	0.59	
<b>Actual 7" csg @ 8001' MD / 7453' TVD / 105' FSL &amp; 168' FEL Sec 5 - 7"</b>										
8,072.0	88.20	357.38	7,458.0	666.8	1,055.5	-1,237.7	6.84	6.81	0.57	
8,157.0	90.30	356.78	7,459.1	751.6	1,051.1	-1,269.3	2.57	2.47	-0.71	
8,242.0	92.30	357.38	7,457.2	836.5	1,046.8	-1,300.9	2.46	2.35	0.71	
8,327.0	93.50	358.08	7,452.9	921.3	1,043.5	-1,333.4	1.63	1.41	0.82	
8,412.0	95.30	359.18	7,446.4	1,006.0	1,041.4	-1,367.0	2.48	2.12	1.29	
8,498.0	93.90	359.28	7,439.5	1,091.7	1,040.3	-1,401.9	1.63	-1.63	0.12	
8,583.0	90.90	0.48	7,435.9	1,176.7	1,040.1	-1,437.3	3.80	-3.53	1.41	
8,668.0	89.50	1.28	7,435.6	1,261.6	1,041.4	-1,474.0	1.90	-1.65	0.94	
8,753.0	89.10	1.48	7,436.7	1,346.6	1,043.5	-1,511.5	0.53	-0.47	0.24	
8,839.0	89.00	1.68	7,438.1	1,432.6	1,045.8	-1,549.6	0.26	-0.12	0.23	
8,924.0	89.30	1.88	7,439.4	1,517.5	1,048.5	-1,587.6	0.42	0.35	0.24	
9,009.0	90.00	1.28	7,439.9	1,602.5	1,050.8	-1,625.3	1.08	0.82	-0.71	
9,095.0	90.50	1.18	7,439.5	1,688.5	1,052.7	-1,663.0	0.59	0.58	-0.12	
9,179.0	90.10	1.18	7,439.1	1,772.4	1,054.4	-1,699.7	0.48	-0.48	0.00	
9,265.0	88.00	1.58	7,440.5	1,858.4	1,056.5	-1,737.6	2.49	-2.44	0.47	
9,350.0	90.40	1.98	7,441.7	1,943.3	1,059.1	-1,775.6	2.86	2.82	0.47	
9,435.0	90.50	2.08	7,441.0	2,028.3	1,062.1	-1,813.9	0.17	0.12	0.12	
9,521.0	90.60	1.98	7,440.2	2,114.2	1,065.2	-1,852.6	0.16	0.12	-0.12	
9,606.0	90.90	0.98	7,439.1	2,199.2	1,067.4	-1,890.2	1.23	0.35	-1.18	
9,691.0	88.50	358.98	7,439.5	2,284.2	1,067.4	-1,925.8	3.68	-2.82	-2.35	
9,776.0	87.50	357.98	7,442.5	2,369.1	1,065.1	-1,959.3	1.66	-1.18	-1.18	
9,862.0	89.20	357.78	7,445.0	2,455.0	1,061.9	-1,992.4	1.99	1.98	-0.23	
9,947.0	90.20	358.38	7,445.4	2,540.0	1,059.1	-2,025.4	1.37	1.18	0.71	
10,032.0	90.00	358.18	7,445.3	2,624.9	1,056.5	-2,058.6	0.33	-0.24	-0.24	
10,117.0	88.10	357.58	7,446.7	2,709.8	1,053.4	-2,091.3	2.34	-2.24	-0.71	
10,202.0	89.80	357.98	7,448.2	2,794.8	1,050.1	-2,123.9	2.05	2.00	0.47	
10,288.0	89.70	358.18	7,448.6	2,880.7	1,047.2	-2,157.3	0.26	-0.12	0.23	
10,373.0	88.40	358.18	7,450.0	2,965.7	1,044.5	-2,190.4	1.53	-1.53	0.00	
10,458.0	90.20	358.38	7,451.0	3,050.6	1,042.0	-2,223.7	2.13	2.12	0.24	
10,544.0	90.70	358.98	7,450.4	3,136.6	1,040.0	-2,257.9	0.91	0.58	0.70	
10,629.0	90.10	359.78	7,449.8	3,221.6	1,039.1	-2,292.6	1.18	-0.71	0.94	
10,714.0	88.40	359.98	7,450.9	3,306.6	1,038.9	-2,328.1	2.01	-2.00	0.24	
10,799.0	87.60	359.48	7,453.9	3,391.5	1,038.5	-2,363.3	1.11	-0.94	-0.59	

# IDS

## Survey Report

<b>Company:</b>	Anadarko	<b>Local Co-ordinate Reference:</b>	Well NRC 26N-5HZ
<b>Project:</b>	Weld Co., Co (NAD 83)	<b>TVD Reference:</b>	Well @ 5025.0usft (Xtreme 23)
<b>Site:</b>	NRC 27-28HZ Pad	<b>MD Reference:</b>	Well @ 5025.0usft (Xtreme 23)
<b>Well:</b>	NRC 26N-5HZ	<b>North Reference:</b>	True
<b>Wellbore:</b>	Wellbore #1	<b>Survey Calculation Method:</b>	Minimum Curvature
<b>Design:</b>	OH	<b>Database:</b>	EDM 5000.1 Single User Db

### Survey

Measured Depth (usft)	Inclination (°)	Azimuth (°)	Vertical Depth (usft)	+N/-S (usft)	+E/-W (usft)	Vertical Section (usft)	Dogleg Rate (°/100usft)	Build Rate (°/100usft)	Turn Rate (°/100usft)
10,884.0	89.60	359.78	7,455.9	3,476.5	1,038.0	-2,398.4	2.38	2.35	0.35
10,969.0	88.60	359.40	7,457.3	3,561.5	1,037.4	-2,433.4	1.26	-1.18	-0.45
11,055.0	90.50	359.30	7,457.9	3,647.5	1,036.4	-2,468.5	2.21	2.21	-0.12
11,140.0	90.80	358.70	7,457.0	3,732.4	1,034.9	-2,502.8	0.79	0.35	-0.71
11,225.0	90.70	358.60	7,455.9	3,817.4	1,032.9	-2,536.5	0.17	-0.12	-0.12
11,310.0	90.50	358.80	7,455.0	3,902.4	1,031.0	-2,570.3	0.33	-0.24	0.24
11,395.0	87.40	358.60	7,456.5	3,987.3	1,029.0	-2,604.2	3.65	-3.65	-0.24
11,480.0	87.90	358.50	7,460.0	4,072.2	1,026.9	-2,637.8	0.60	0.59	-0.12
11,564.0	88.80	358.70	7,462.4	4,156.2	1,024.8	-2,671.1	1.10	1.07	0.24
11,649.0	89.70	358.80	7,463.6	4,241.1	1,023.0	-2,705.0	1.07	1.06	0.12
11,734.0	90.70	359.10	7,463.3	4,326.1	1,021.4	-2,739.1	1.23	1.18	0.35
11,819.0	91.80	359.40	7,461.4	4,411.1	1,020.3	-2,773.7	1.34	1.29	0.35
11,905.0	91.50	358.70	7,458.9	4,497.0	1,018.9	-2,808.4	0.89	-0.35	-0.81
11,991.0	90.70	358.90	7,457.3	4,583.0	1,017.1	-2,842.8	0.96	-0.93	0.23
12,076.0	89.90	359.30	7,456.8	4,668.0	1,015.8	-2,877.1	1.05	-0.94	0.47
12,161.0	90.60	359.30	7,456.5	4,753.0	1,014.7	-2,911.8	0.82	0.82	0.00
12,246.0	89.50	359.40	7,456.4	4,838.0	1,013.7	-2,946.5	1.30	-1.29	0.12
12,331.0	90.10	359.20	7,456.7	4,923.0	1,012.7	-2,981.2	0.74	0.71	-0.24
12,417.0	91.30	359.30	7,455.6	5,009.0	1,011.6	-3,016.1	1.40	1.40	0.12
12,502.0	90.50	0.10	7,454.3	5,093.9	1,011.1	-3,051.3	1.33	-0.94	0.94
12,587.0	90.50	359.10	7,453.6	5,178.9	1,010.5	-3,086.4	1.18	0.00	-1.18
12,671.0	91.20	0.00	7,452.3	5,262.9	1,009.9	-3,120.9	1.36	0.83	1.07
12,698.0	91.40	359.10	7,451.7	5,289.9	1,009.7	-3,132.1	3.41	0.74	-3.33
Last MWD									
12,760.0	91.40	359.10	7,450.2	5,351.9	1,008.7	-3,157.1	0.00	0.00	0.00
PTD @ 12760' MD / 7450' TVD / 534' FNL & 164' FEL Sec 5									

### Casing Points

Measured Depth (usft)	Vertical Depth (usft)	Name	Casing Diameter (")	Hole Diameter (")
8,001.0	7,452.8	7"	7	8-3/4

### Design Annotations

Measured Depth (usft)	Vertical Depth (usft)	Local Coordinates		Comment
		+N/-S (usft)	+E/-W (usft)	
1,229.0	1,229.0	-1.3	-0.6	First MWD
7,891.5	7,432.9	488.7	1,065.7	Cross Section Line @ 7892' MD / 7433' TVD
8,001.0	7,452.8	596.1	1,059.0	Actual 7" csg @ 8001' MD / 7453' TVD / 105' FSL & 168' FEL Sec 5
12,698.0	7,451.7	5,289.9	1,009.7	Last MWD
12,760.0	7,450.2	5,351.9	1,008.7	PTD @ 12760' MD / 7450' TVD / 534' FNL & 164' FEL Sec 5

**IDS**  
Survey Report

<b>Company:</b>	Anadarko	<b>Local Co-ordinate Reference:</b>	Well NRC 26N-5HZ
<b>Project:</b>	Weld Co., Co (NAD 83)	<b>TVD Reference:</b>	Well @ 5025.0usft (Xtreme 23)
<b>Site:</b>	NRC 27-28HZ Pad	<b>MD Reference:</b>	Well @ 5025.0usft (Xtreme 23)
<b>Well:</b>	NRC 26N-5HZ	<b>North Reference:</b>	True
<b>Wellbore:</b>	Wellbore #1	<b>Survey Calculation Method:</b>	Minimum Curvature
<b>Design:</b>	OH	<b>Database:</b>	EDM 5000.1 Single User Db

Checked By: _____	Approved By: _____	Date: _____
-------------------	--------------------	-------------