

WELL LOCATION PLAT T4S, R65W, 6th P.M.

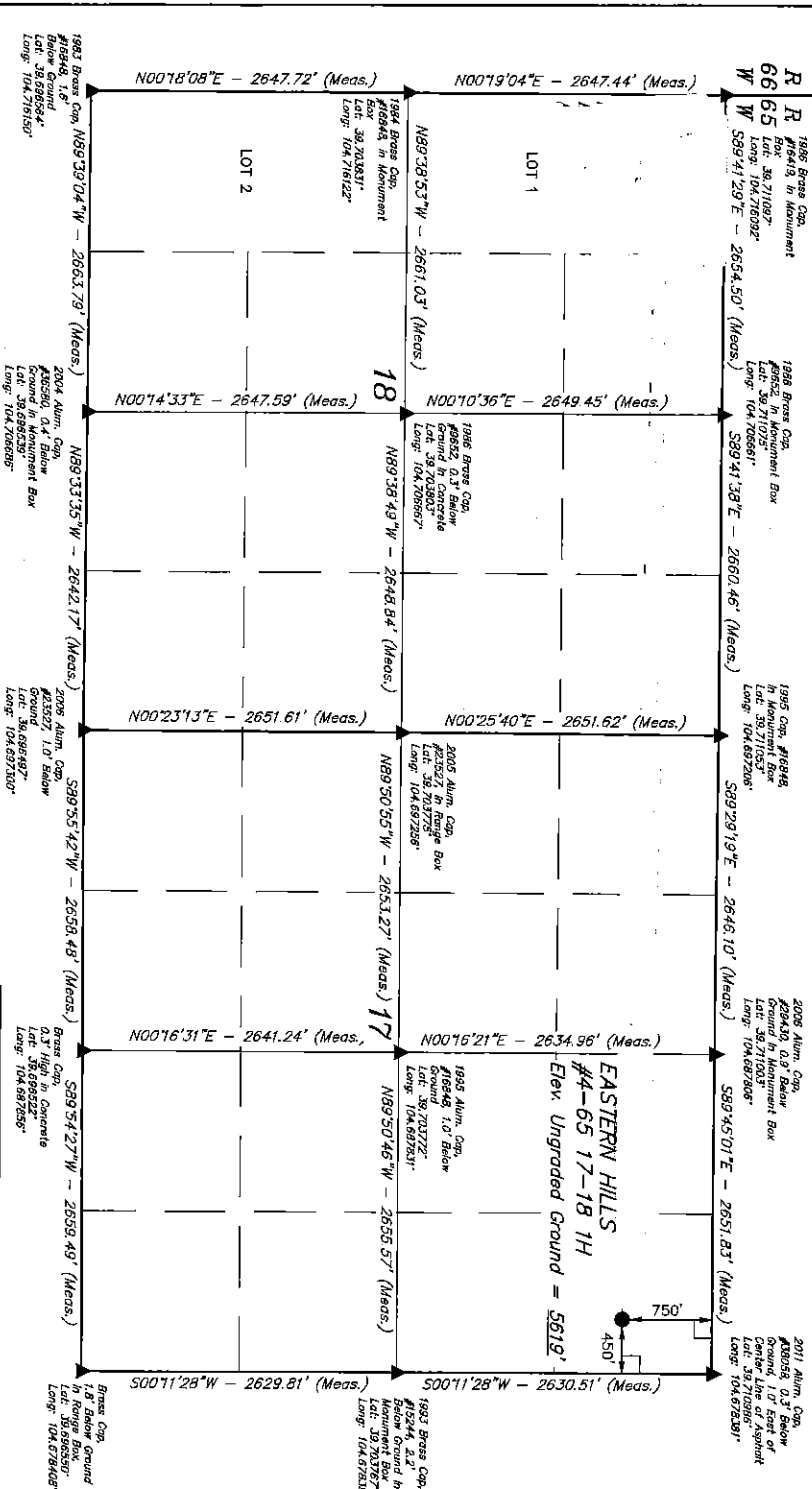
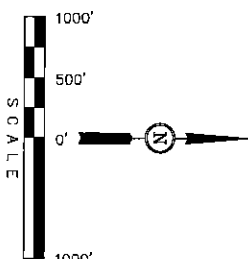
ConocoPhillips Company
Well location, EASTERN HILLS #4-65 17-18 1H,
located as shown in the NE 1/4 NE 1/4 of
Section 17, T4S, R65W, 6th P.M., Archdave
County, Colorado.

BASIS OF ELEVATION

BENCHMARK 374 LOCATED ON THE SECTION LINE BETWEEN
SECTIONS 12 & 13, T5S, R64W, 6th P.M., TAKEN FROM 1988
PUBLISHED DATUM BY THE UNITED STATES DEPARTMENT OF
THE INTERIOR, GEOLOGICAL SURVEY AS BEING 8054.61 FEET

BASIS OF BEARINGS

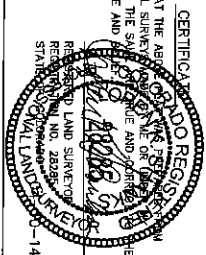
BASIS OF BEARINGS IS A G.P.S. OBSERVATION.



LINE TABLE		
LINE	DIRECTION	LENGTH
18	N89°41'29"E	2654.50'
17	N00°16'31"E	2641.24'

- LEGEND:
- 90° SYMBOL
 - PROPOSED WELL HEAD
 - SECTION CORNERS LOCATED
 - TARGET BOTTOM HOLE
 - PRODUCTION INTERVAL

REV: 04-09-14 JLS



THIS IS TO CERTIFY THAT THE ABOVE DESCRIBED SURVEY WAS
FIELD NOTES OF ACTUAL SURVEY, AND THAT THE SAME IS A TRUE AND
CORRECT REPRESENTATION OF THE SAME, AND THAT THE SAME IS
THE BEST OF MY KNOWLEDGE AND BELIEF.

UTAH ENGINEERING & LAND SURVEYING
85 SOUTH 200 EAST - VERNAL, UTAH 84078
(435) 789-1017

SCALE: 1" = 1000'

DATE SURVEYED: 02-18-14 DATE DRAWN: 03-03-14

PARTY: GREG WEIMER C.J. H.K.W. REFERENCES: G.L.O. PLAT

WEATHER: COOL FILE: ConocoPhillips Company

POOP = 1.6

MD 65 (SURFACE LOCATION)
NAD 83 (SURFACE LOCATION)
LONGITUDE = 104°42'52.10" (38.70831)
LATITUDE = 39°42'52.10" (39.70831)
NAD 27 (SURFACE LOCATION)
LONGITUDE = 104°42'52.10" (38.70831)
LATITUDE = 39°42'52.10" (39.70831)
STATE PLAT NO. 27
STATE PLAT NO. 27
N: 88140.63 E: 223069.38

SECTION BREAKDOWN T4S, R65W, 6th P.M.

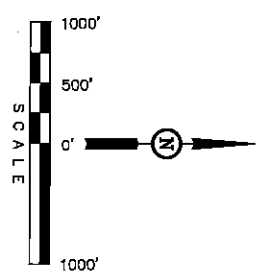
ConocoPhillips Company
Well location, EASTERN HILLS #4-65 17-18 1H,
located as shown in the NE 1/4 NE 1/4 of
Section 17, T4S, R65W, 6th P.M., Archapchoe
County, Colorado.

BASIS OF ELEVATION

BENCHMARK 374 LOCATED ON THE SECTION LINE BETWEEN
SECTIONS 12 & 13, T5S, R64W, 6th P.M., TAKEN FROM 1986
PUBLISHED DATUM BY THE UNITED STATES DEPARTMENT OF
THE INTERIOR, GEOLOGICAL SURVEY AS BEING 6054.61 FEET.

BASIS OF BEARINGS

BASIS OF BEARINGS IS A G.P.S. OBSERVATION.



THIS IS TO CERTIFY THAT THE ABOVE IS A TRUE AND CORRECT
FIELD NOTES OF ACTUAL SURVEY OF THE ESTATE OF LANDS
SUPERVISION AND THAT THE SURVEY WAS MADE AND RUN IN THE
BEST OF MY KNOWLEDGE AND BELIEF.

CERTIFIED TRUE AND CORRECT
STATE OF COLORADO
COUNTY OF ARCHAPCHOE
RECORDED LAND SURVEYOR
NO. 2225
STATE OF COLORADO
JULY 14, 2014

REV. 04-09-14 U.S.

UTAH ENGINEERING & LAND SURVEYING
86 SOUTH 200 EAST - VERNAL, UTAH 84078
(435) 789-1017

SCALE: 1" = 1000'
DATE SURVEYED: 02-18-14
DATE DRAWN: 03-03-14
PARTY: GREG WEIMER C.J. H.K.W.
REFERENCES: G.L.O. PLAT
WEATHER: COOL
FILE: ConocoPhillips Company

UDG REG. (SURFACE LOCATION)
LONGITUDE = 104.6212° (104.6212°)
LATITUDE = 39.4232° (39.4232°)
UDG 27 (SURFACE LOCATION)
LONGITUDE = 104.6212° (104.6212°)
LATITUDE = 39.4232° (39.4232°)
STATE PLAT NO. 27
STATE PLAT NO. 27
STATE PLAT NO. 27

LINE TABLE	
LINE	DIRECTION LENGTH
L1	N89°41'28"W 135.00'

- LEGEND:**
- = 90° SYMBOL
 - = PROPOSED WELL HEAD
 - △ = SECTION CORNERS LOCATED
 - ◊ = TARGET BOTTOM HOLE
 - ◇ = PRODUCTION INTERVAL

