

WELL LOCATION PLAT
T4S, R65W, 6th P.M.

ConocoPhillips Company

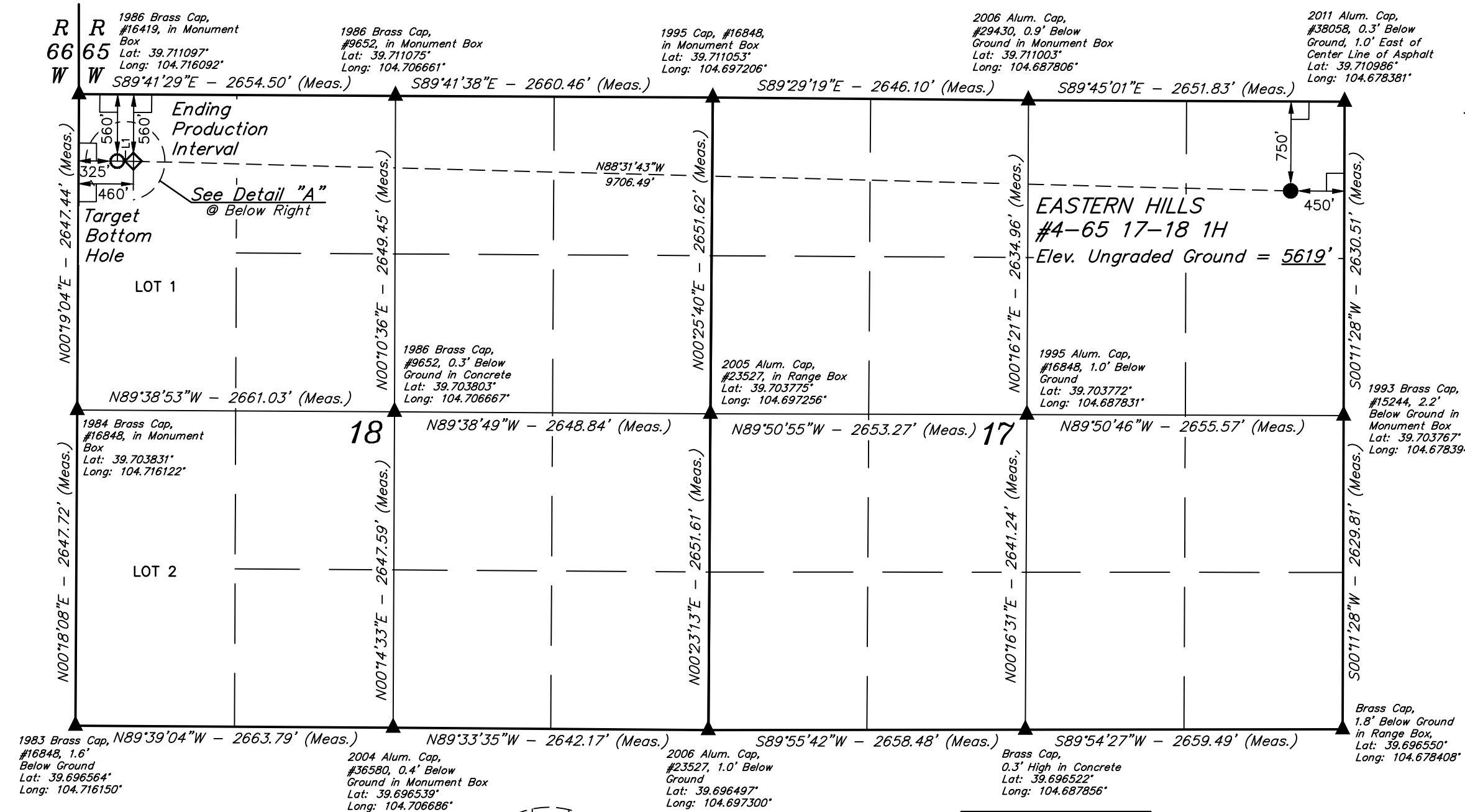
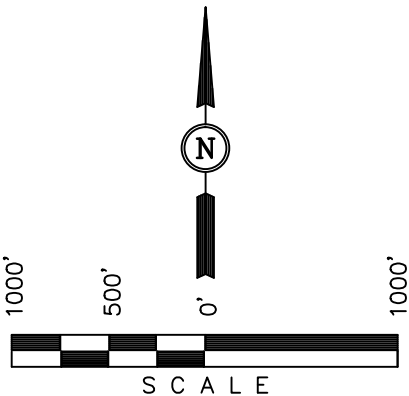
Well location, EASTERN HILLS #4-65 17-18 1H,
located as shown in the NE 1/4 NE 1/4 of
Section 17, T4S, R65W, 6th P.M., Arapahoe
County, Colorado.

BASIS OF ELEVATION

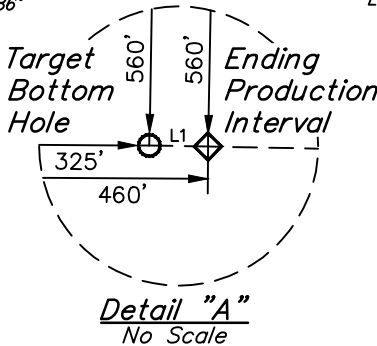
BENCHMARK 374 LOCATED ON THE SECTION LINE BETWEEN
SECTIONS 12 & 13, T5S, R64W, 6th P.M., TAKEN FROM 1988
PUBLISHED DATUM BY THE UNITED STATES DEPARTMENT OF
THE INTERIOR, GEOLOGICAL SURVEY AS BEING 6054.61 FEET.

BASIS OF BEARINGS

BASIS OF BEARINGS IS A G.P.S. OBSERVATION.



- LEGEND:
- 90° SYMBOL
 - PROPOSED WELL HEAD.
 - SECTION CORNERS LOCATED.
 - TARGET BOTTOM HOLE.
 - PRODUCTION INTERVAL.



LINE TABLE		
LINE	DIRECTION	LENGTH
L1	N89°41'29"W	135.00'

PDOP = 1.6

NAD 83 (TARGET BOTTOM HOLE)	NAD 83 (ENDING PRODUCTION INTERVAL)	NAD 83 (SURFACE LOCATION)
LATITUDE = 39°42'34.41" (39.709558)	LATITUDE = 39°42'34.40" (39.709556)	LATITUDE = 39°42'32.15" (39.708931)
LONGITUDE = 104°42'53.80" (104.714944)	LONGITUDE = 104°42'52.07" (104.714464)	LONGITUDE = 104°40'47.94" (104.679983)
NAD 27 (TARGET BOTTOM HOLE)	NAD 27 (ENDING PRODUCTION INTERVAL)	NAD 27 (SURFACE LOCATION)
LATITUDE = 39°42'34.45" (39.709569)	LATITUDE = 39°42'34.45" (39.709569)	LATITUDE = 39°42'32.20" (39.708944)
LONGITUDE = 104°42'51.90" (104.714417)	LONGITUDE = 104°42'50.18" (104.713939)	LONGITUDE = 104°40'46.05" (104.679458)
STATE PLANE NAD 83	STATE PLANE NAD 83	STATE PLANE NAD 83
N: 1684289.98 E: 3220868.10	N: 1684290.74 E: 3221003.06	N: 1684148.39 E: 3230705.67
STATE PLANE NAD 27	STATE PLANE NAD 27	STATE PLANE NAD 27
N: 684282.07 E: 2221021.90	N: 684282.83 E: 2221156.86	N: 684140.63 E: 2230859.39

CERTIFICATE
THIS IS TO CERTIFY THAT THE ABOVE PLAT WAS PREPARED FROM
FIELD NOTES OF ACTUAL SURVEYS MADE BY ME OR UNDER MY
SUPERVISION AND THAT THE SAME ARE TRUE AND CORRECT TO THE
BEST OF MY KNOWLEDGE AND BELIEF.
REGISTERED LAND SURVEYOR
REGISTRATION NO. 28285
STATE OF COLORADO
JUL 10 2014

REV: 04-09-14 J.S.

UINTAH ENGINEERING & LAND SURVEYING 85 SOUTH 200 EAST - VERNAL, UTAH 84078 (435) 789-1017		
SCALE 1" = 1000'	DATE SURVEYED: 02-18-14	DATE DRAWN: 03-03-14
PARTY GREG WEIMER C.J. H.K.W.	REFERENCES G.L.O. PLAT	
WEATHER COOL	FILE ConocoPhillips Company	

SECTION BREAKDOWN
T4S, R65W, 6th P.M.

ConocoPhillips Company

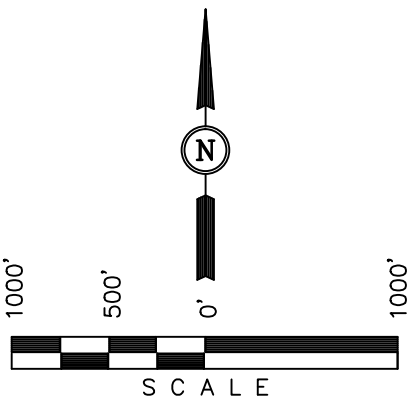
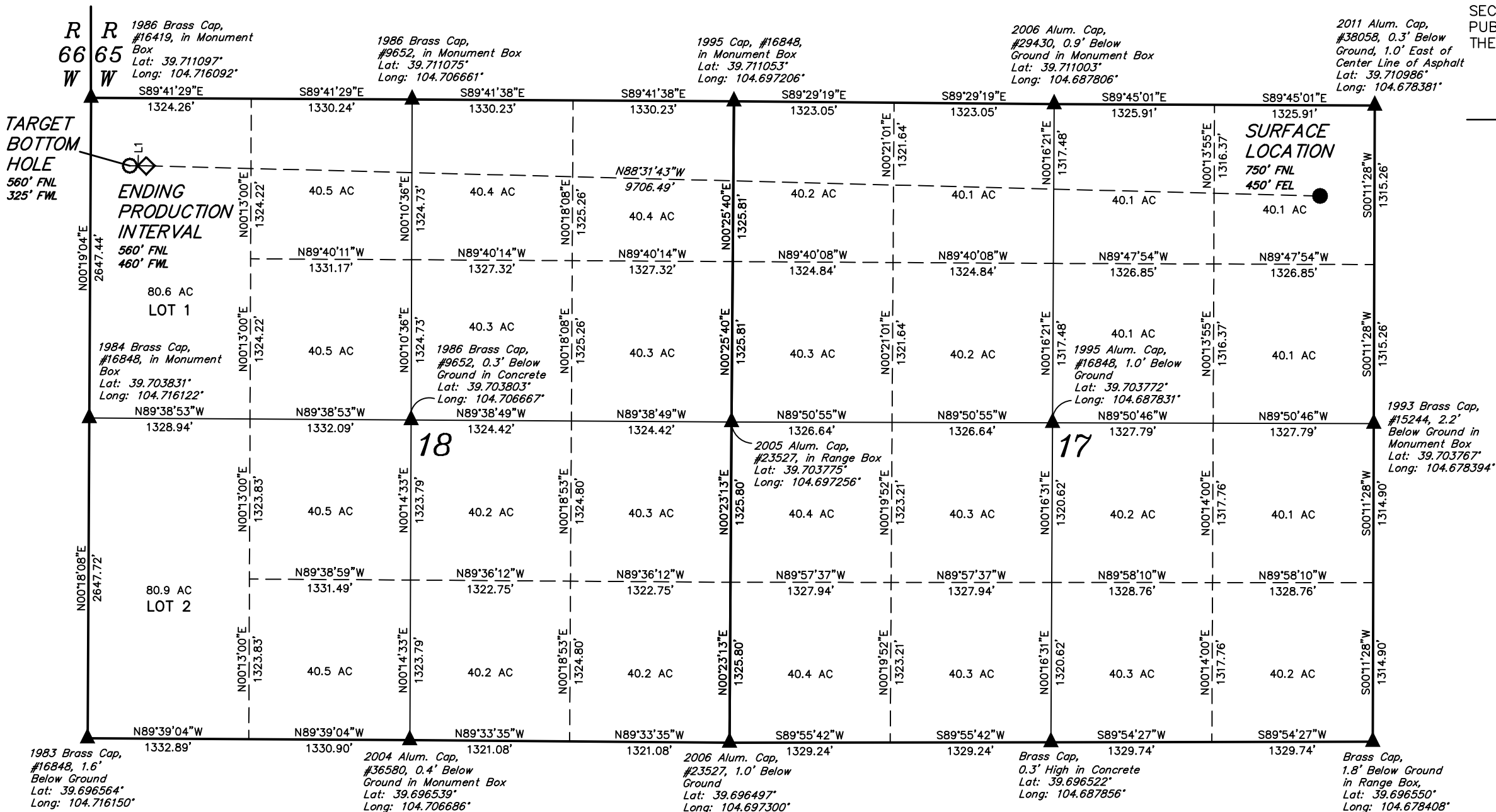
Well location, EASTERN HILLS #4-65 17-18 1H,
located as shown in the NE 1/4 NE 1/4 of
Section 17, T4S, R65W, 6th P.M., Arapahoe
County, Colorado.

BASIS OF ELEVATION

BENCHMARK 374 LOCATED ON THE SECTION LINE BETWEEN
SECTIONS 12 & 13, T5S, R64W, 6th P.M., TAKEN FROM 1988
PUBLISHED DATUM BY THE UNITED STATES DEPARTMENT OF
THE INTERIOR, GEOLOGICAL SURVEY AS BEING 6054.61 FEET.

BASIS OF BEARINGS

BASIS OF BEARINGS IS A G.P.S. OBSERVATION.



CERTIFICATE
THIS IS TO CERTIFY THAT THE ABOVE PLAT WAS PREPARED FROM
FIELD NOTES OF ACTUAL SURVEYS MADE BY ME OR UNDER MY
SUPERVISION AND THAT THE SAME ARE TRUE AND CORRECT TO THE
BEST OF MY KNOWLEDGE AND BELIEF.
REGISTERED LAND SURVEYOR
REGISTRATION NO. 28285
STATE OF COLORADO
JUL 28 2014

LINE TABLE		
LINE	DIRECTION	LENGTH
L1	N89°41'29"W	135.00'

PDOP = 1.6

- LEGEND:
- 90° SYMBOL
 - PROPOSED WELL HEAD.
 - SECTION CORNERS LOCATED.
 - TARGET BOTTOM HOLE.
 - PRODUCTION INTERVAL.

NAD 83 (TARGET BOTTOM HOLE)	NAD 83 (ENDING PRODUCTION INTERVAL)	NAD 83 (SURFACE LOCATION)
LATITUDE = 39°42'34.41" (39.709558)	LATITUDE = 39°42'34.40" (39.709556)	LATITUDE = 39°42'32.15" (39.708931)
LONGITUDE = 104°42'53.80" (104.714944)	LONGITUDE = 104°42'52.07" (104.714464)	LONGITUDE = 104°40'47.94" (104.679983)
NAD 27 (TARGET BOTTOM HOLE)	NAD 27 (ENDING PRODUCTION INTERVAL)	NAD 27 (SURFACE LOCATION)
LATITUDE = 39°42'34.45" (39.709569)	LATITUDE = 39°42'34.45" (39.709569)	LATITUDE = 39°42'32.20" (39.708944)
LONGITUDE = 104°42'51.90" (104.714417)	LONGITUDE = 104°42'50.18" (104.713939)	LONGITUDE = 104°40'46.05" (104.679458)
STATE PLANE NAD 83	STATE PLANE NAD 83	STATE PLANE NAD 83
N: 1684289.98 E: 3220868.10	N: 1684290.74 E: 3221003.06	N: 1684148.39 E: 3230705.67
STATE PLANE NAD 27	STATE PLANE NAD 27	STATE PLANE NAD 27
N: 684282.07 E: 2221021.90	N: 684282.83 E: 2221156.86	N: 684140.63 E: 2230859.39

REV: 04-09-14 J.S.

UINTAH ENGINEERING & LAND SURVEYING		
85 SOUTH 200 EAST - VERNAL, UTAH 84078		
(435) 789-1017		
SCALE 1" = 1000'	DATE SURVEYED: 02-18-14	DATE DRAWN: 03-03-14
PARTY GREG WEIMER C.J. H.K.W.	REFERENCES G.L.O. PLAT	
WEATHER COOL	FILE ConocoPhillips Company	