

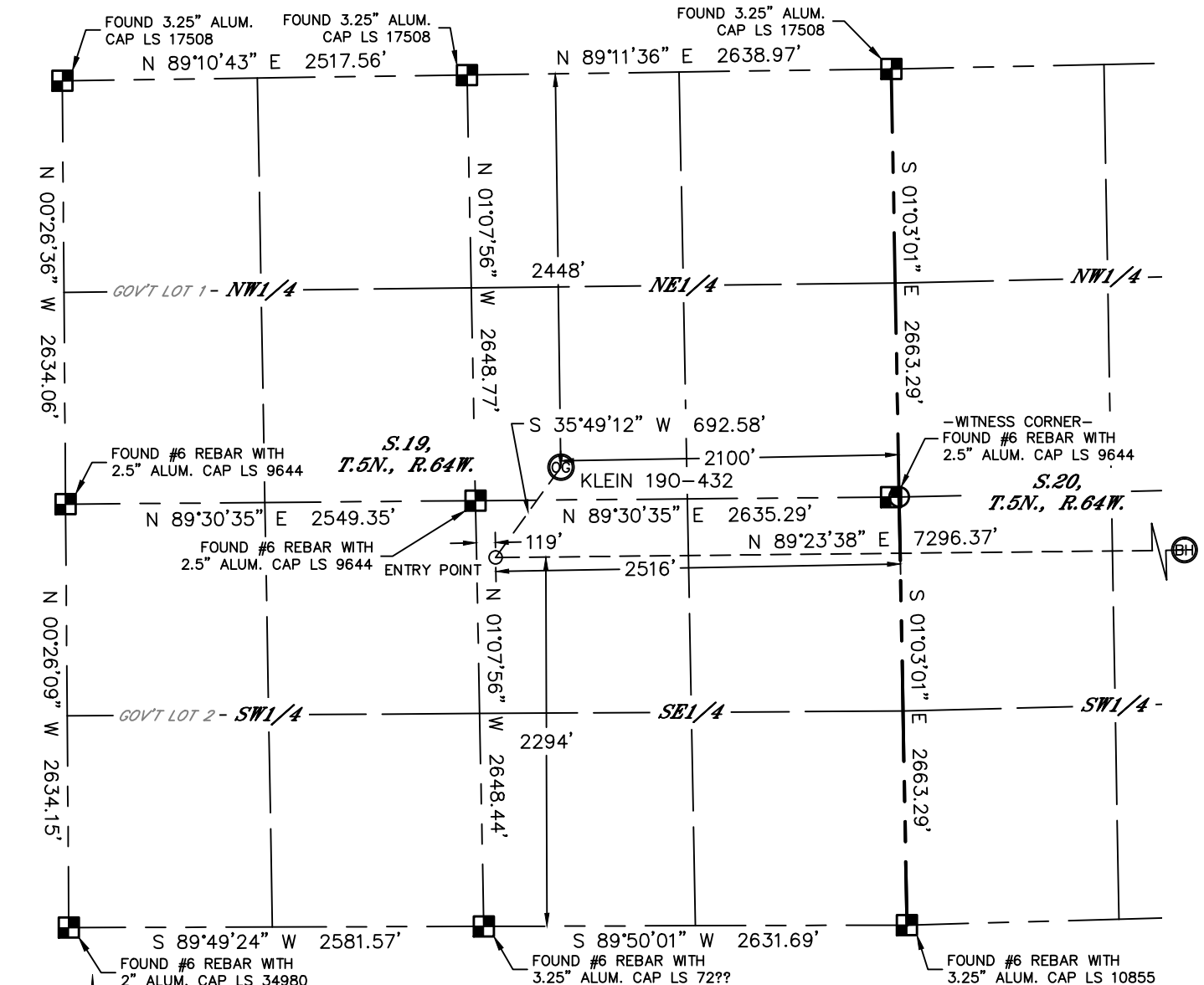


Lat40°, Inc. 1635 Foxtrail Drive, Suite 325 Loveland, CO 970-776-3321

WELL LOCATION CERTIFICATE

THIS MAP DOES NOT REPRESENT A BOUNDARY SURVEY

SECTION: 19
TOWNSHIP: 5N
RANGE: 64W



In accordance with a request from Al Bragg with PDC ENERGY Lat40°, Inc. has determined the surface location of the KLEIN 190-432 to be 2448' from the NORTH line and 2100' from the EAST line as measured at right angles from the section lines of Section 19, Township 5 North, Range 64 West and the bottom hole to be 2231' from the SOUTH line and 500' from the EAST line as measured at right angles from the section lines of Section 20, Township 5 North, Range 64 West of the Sixth Principal Meridian, County of Weld, State of Colorado.

I hereby state that this Well Location Certificate was prepared by me, or under my direct supervision, that the fieldwork was completed on 11/26/2013, for and on behalf of PDC ENERGY That this is not a Land Survey Plat or an Improvement Survey Plat, and that it is not to be relied upon for establishment of fence, building, or other future improvement lines.

SURFACE LOCATION
LAT: 40.38516°N
LONG: 104.59084°W
PDOP: 1.9
ELEV: 4626'
1/4,1/4: SWNE

BOTTOM HOLE
LAT: 40.38364°N
LONG: 104.56613°W
1/4,1/4: NESE

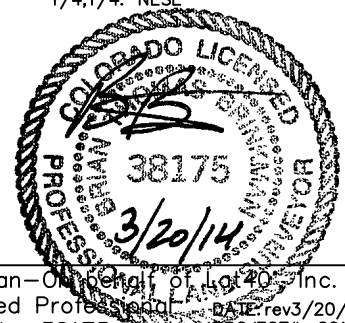
ENTRY POINT
LAT: 40.38363°N
LONG: 104.59232°W
1/4,1/4: NWSE

LEGEND

- = ALIQUOT MONUMENT AS DESCRIBED
- = CALCULATED POSITION

SHEET 1 OF 2

Brian T. Brinkman—On behalf of Lat40°, Inc.
Colorado Licensed Professional Land Surveyor No. 38175
DATE: rev3/20/2014
PROJECT#: 2013130



NOTE:

- 1) Bearings shown are Grid Bearings of the Colorado State Plane Coordinate System, North Zone, North American Datum 1983/2007. The lineal dimensions as contained herein are based upon the "U.S. Survey Foot."
- 2) Ground elevations are based on an observed GPS elevation (NAVD 1988 DATUM).
- 3) IMPROVEMENTS: See LOCATION DRAWING for all visible improvements within 500' of disturbed area.
- 4) SURFACE USE: CROPLAND
- 5) INSTRUMENT OPERATOR: BRIAN ROTTINGHAUS
- 6) NEAREST CULTURAL ITEMS:
BUILDING: ±2047' NE
BUILDING UNIT: ±2294' NW
HIGH OCCUPANCY BUILDING UNIT: 5280'+
DESIGNATED OUTSIDE ACTIVITY AREA: 5280'+
PUBLIC ROAD: (COUNTY ROAD 54.5) 1946' SE
ABOVEGROUND UTILITY: 1074' NW
RAILROAD: ±1419' SE
PROPERTY LINE: 203' S

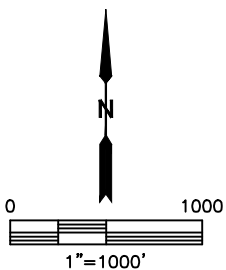
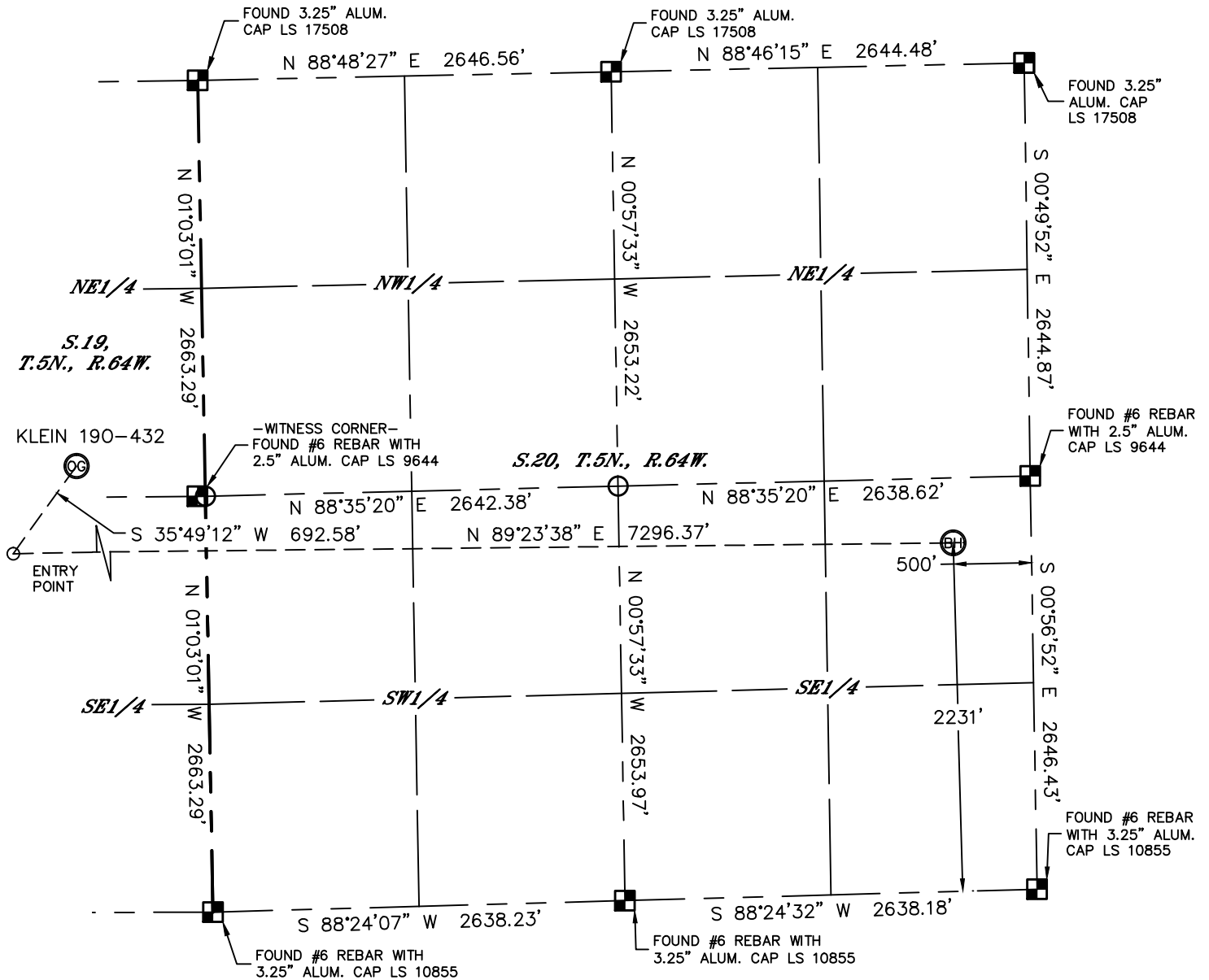


Lat40°, Inc. 1635 Foxtrail Drive, Suite 325 Loveland, CO 970-776-3321



WELL LOCATION CERTIFICATE

THIS MAP DOES NOT REPRESENT A BOUNDARY SURVEY

SECTION: 19
TOWNSHIP: 5N
RANGE: 64W

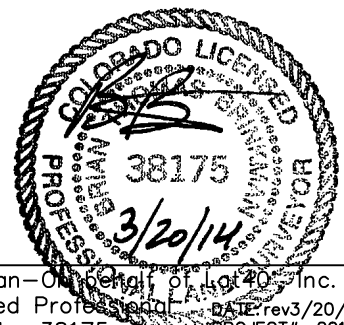


LEGEND

-  = ALIQUOT MONUMENT AS DESCRIBED
-  = CALCULATED POSITION

SHEET 2 OF 2

Brian T. Brinkman—On behalf of Lat40°, Inc.
Colorado Licensed Professional Land Surveyor No. 38175
DATE: rev3/20/2014
PROJECT#: 2013130

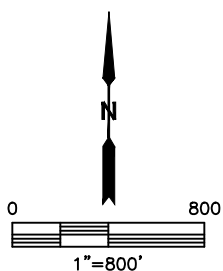
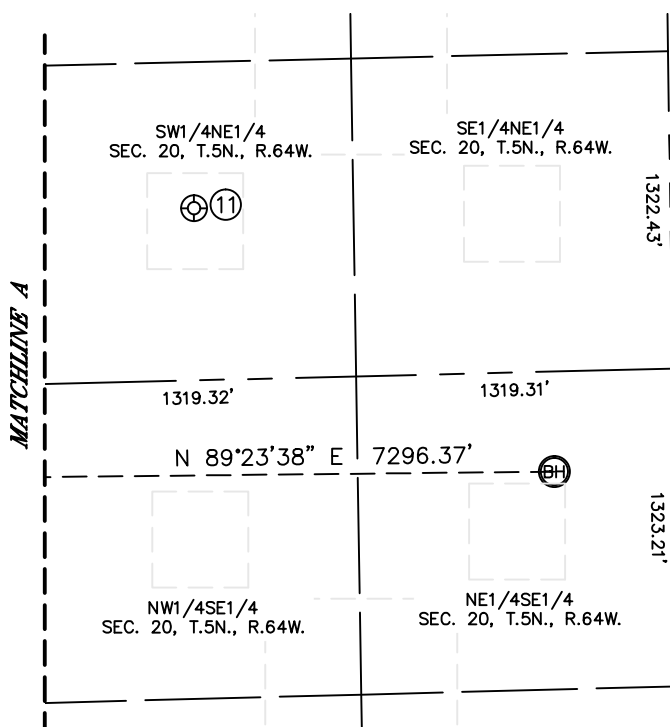
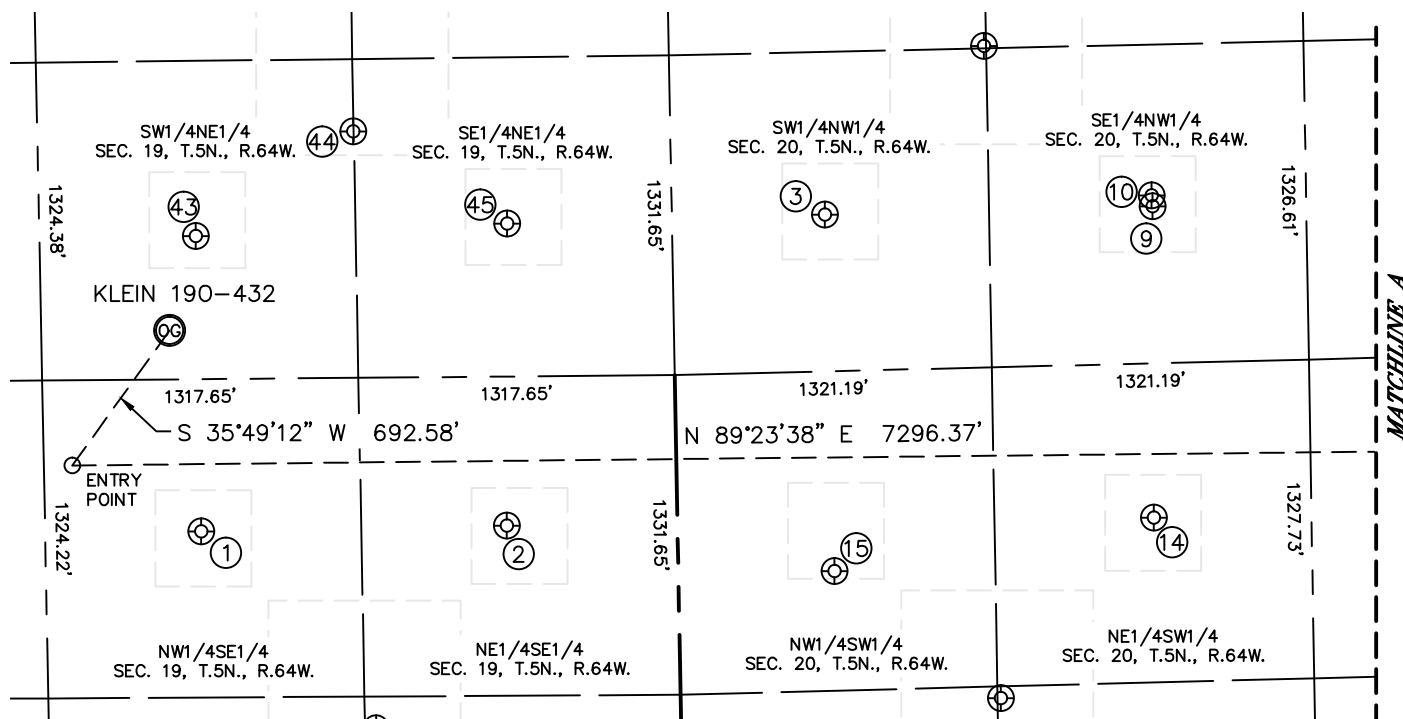


Lat40°, Inc. 1635 Foxtrail Drive, Suite 325 Loveland, CO 970-776-3321

SITE SKETCH

KLEIN 190-432

SECTION: 19
TOWNSHIP: 5N
RANGE: 64W



SHEET 1 OF 2

DATE: rev3/20/2014
PROJECT#: 2013130



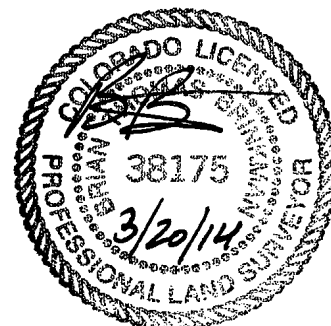
Lat40°, Inc. 1635 Foxtrail Drive, Suite 325 Loveland, CO 970-776-3321

SITE SKETCH

KLEIN 190-432

SECTION: 19
TOWNSHIP: 5N
RANGE: 64W

WELL NO.	WELL NAME	SHL FOOTAGE				SHL LAT°	SHL LONG°	PDOP	ELEV (FT.)	1/4/1/4
1	AUSTIN 1	2018	FSL	1984	FEL	40.38286	-104.59040	2.0	4626	NWSE
2	MOWERY 19-1	2037	FSL	711	FEL	40.38289	-104.58583	2.1	4624	NESE
3	DUELL 20-1	2008	FNL	637	FWL	40.38641	-104.58103	2.1	4621	SWNW
9	BRENT 1-6I	2002	FNL	2003	FWL	40.38647	-104.57613	3.1	4623	SENW
10	BRENT 1	1957	FNL	2000	FWL	40.38659	-104.57614	2.4	4623	SENW
11	VICTOR KLEIN 20-1A	1934	FNL	1985	FEL	40.38669	-104.57148	2.3	4619	SWNE
14	EVERT 20-1	2013	FSL	1984	FWL	40.38291	-104.57616	1.6	4634	NESW
15	IVAN KLEIN 13-20	1828	FSL	650	FWL	40.38233	-104.58094	1.5	4624	NWSW
43	LOUIS KLEIN 19-2	2056	FNL	1985	FEL	40.38624	-104.59044	1.6	4625	SWNE
44	SETH 5	1630	FNL	1321	FEL	40.38742	-104.58807	1.3	4624	SWNE
45	LEWIS KLEIN 19-1	2022	FNL	686	FEL	40.38635	-104.58578	5.4	4623	SENE



SHEET 2 OF 2

DATE: 1/2/2014
PROJECT#: 2013130