

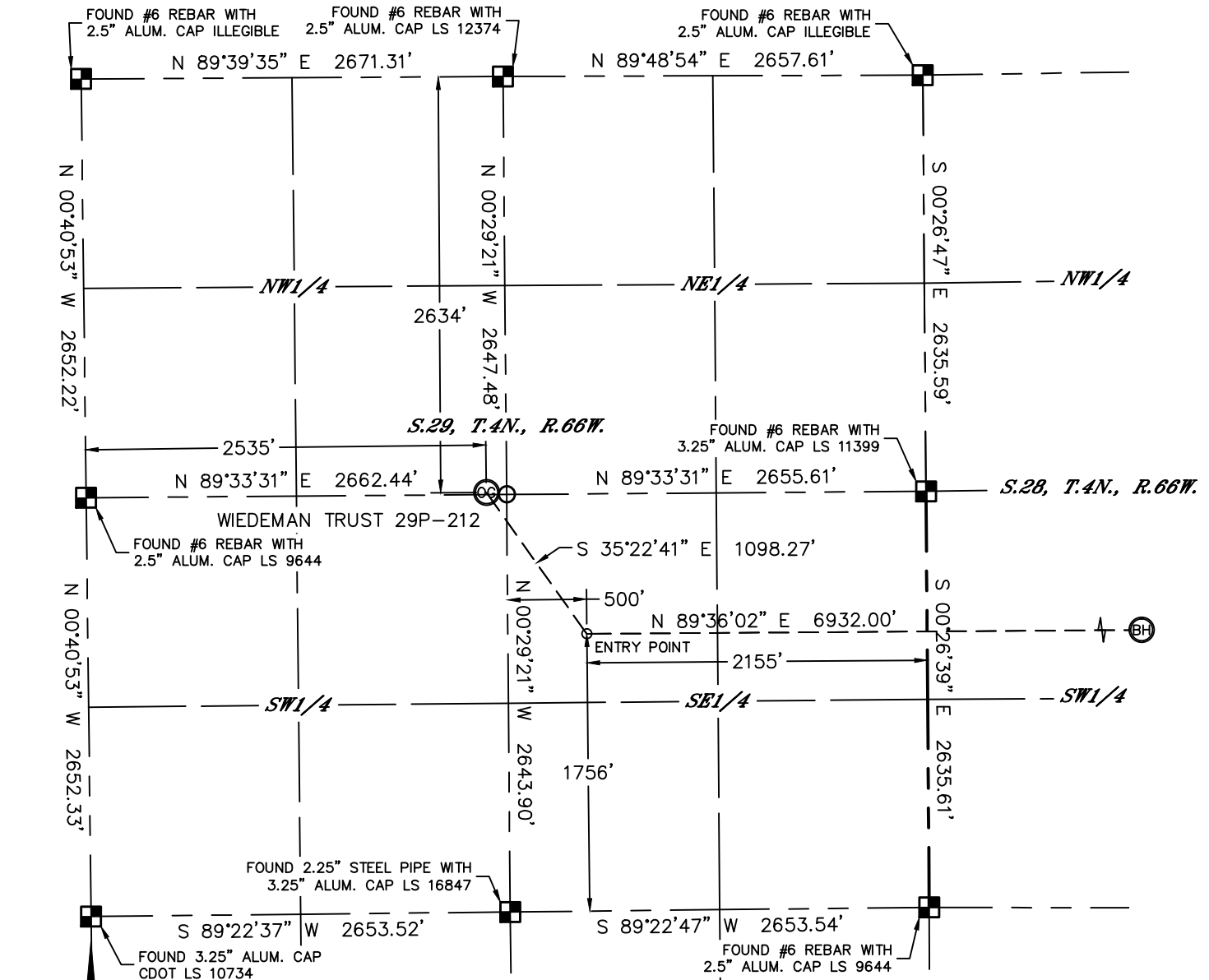


Lat40°, Inc. 1635 Foxtrail Drive, Suite 325 Loveland, CO 970-776-3321

# WELL LOCATION CERTIFICATE

SECTION: 29  
TOWNSHIP: 4N  
RANGE: 66W

THIS MAP DOES NOT REPRESENT A BOUNDARY SURVEY



In accordance with a request from Mac Neumann with PDC ENERGY Lat40°, Inc. has determined the surface location of the WIEDEMAN TRUST 29P-212 to be 2634' from the NORTH line and 2535' from the WEST line as measured at right angles from the section lines of Section 29, Township 4 North, Range 66 West and the bottom hole to be 1756' from the SOUTH line and 500' from the EAST line as measured at right angles from the section lines of Section 28, Township 4 North, Range 66 West both of the Sixth Principal Meridian, County of Weld, State of Colorado.

I hereby state that this Well Location Certificate was prepared by me, or under my direct supervision, that the fieldwork was completed on 5/5/2014, for and on behalf of PDC ENERGY. That this is not a Land Survey Plat or an Improvement Survey Plat, and that it is not to be relied upon for establishment of fence, building, or other future improvement lines.

## NOTE:

- 1) Bearings shown are Grid Bearings of the Colorado State Plane Coordinate System, North Zone, North American Datum 1983/2007. The lineal dimensions as contained herein are based upon the "U.S. Survey Foot."
- 2) Ground elevations are based on an observed GPS elevation (NAVD 1988 DATUM).
- 3) IMPROVEMENTS: See LOCATION DRAWING for all visible improvements within 500' of disturbed area.
- 4) SURFACE USE: CROP LAND
- 5) INSTRUMENT OPERATOR: ADAM KELLY
- 6) NEAREST CULTURAL ITEMS:  
BUILDING: ±2093' E  
BUILDING UNIT: ±2522' N  
HIGH OCCUPANCY BUILDING UNIT: +5280'  
DESIGNATED OUTSIDE ACTIVITY AREA: +5280'  
PUBLIC ROAD: ±2523' W (HWY 60)  
ABOVEGROUND UTILITY: 212' SE  
RAILROAD: +5280'  
PROPERTY LINE: ±219' SE

**SURFACE LOCATION**  
LAT: 40.28265N  
LONG: 104.80188W  
PDOP: 1.7  
ELEV: 4763'  
1/4,1/4: SENW

**BOTTOM HOLE**  
LAT: 40.28016N  
LONG: 104.77479W  
1/4,1/4: NESE

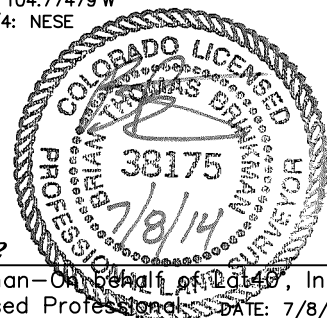
**ENTRY POINT**  
LAT: 40.28018N  
LONG: 104.79963W  
1/4,1/4: NWSE

## LEGEND

- = ALIQUOT MONUMENT AS DESCRIBED  
○ = CALCULATED POSITION

## SHEET 1 OF 2

Brian T. Brinkman—On behalf of Lat40°, Inc.  
Colorado Licensed Professional  
Land Surveyor No. 38175  
DATE: 7/8/2014  
PROJECT#: 2013114



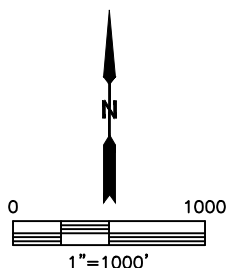
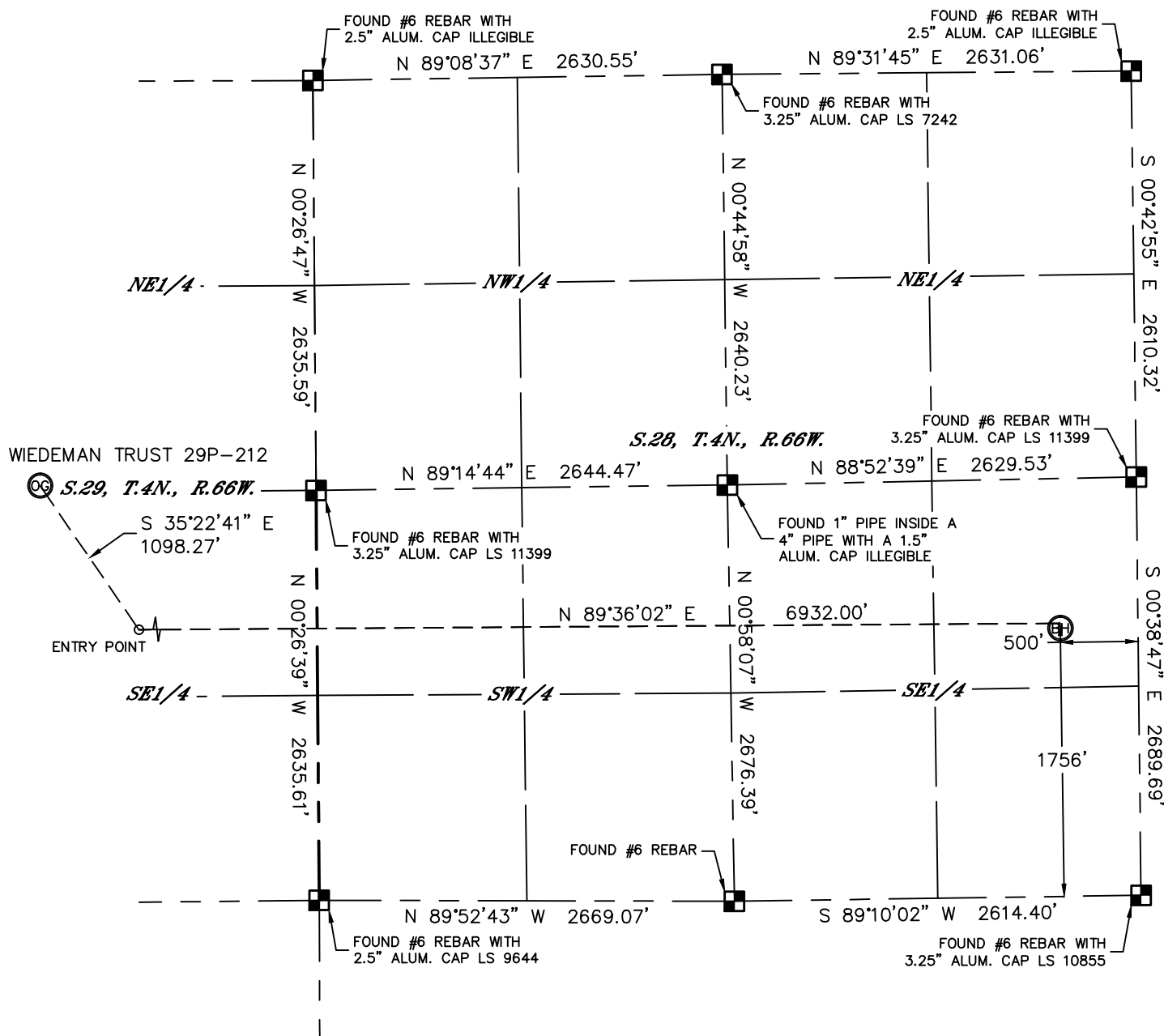


Lat40°, Inc. 1635 Foxtrail Drive, Suite 325 Loveland, CO 970-776-3321

# WELL LOCATION CERTIFICATE

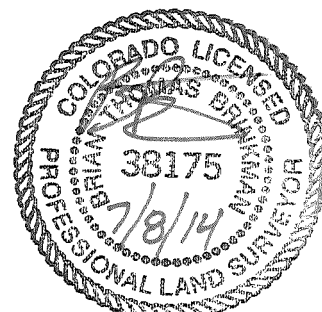
THIS MAP DOES NOT REPRESENT A BOUNDARY SURVEY

SECTION: 29  
TOWNSHIP: 4N  
RANGE: 66W



## LEGEND

- = ALIQUOT MONUMENT AS DESCRIBED
- = CALCULATED POSITION



**SHEET 2 OF 2**

Brian T. Brinkman—On behalf of Lat40°, Inc.  
Colorado Licensed Professional  
Land Surveyor No. 38175  
DATE: 7/8/2014  
PROJECT#: 2013114

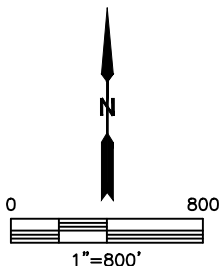
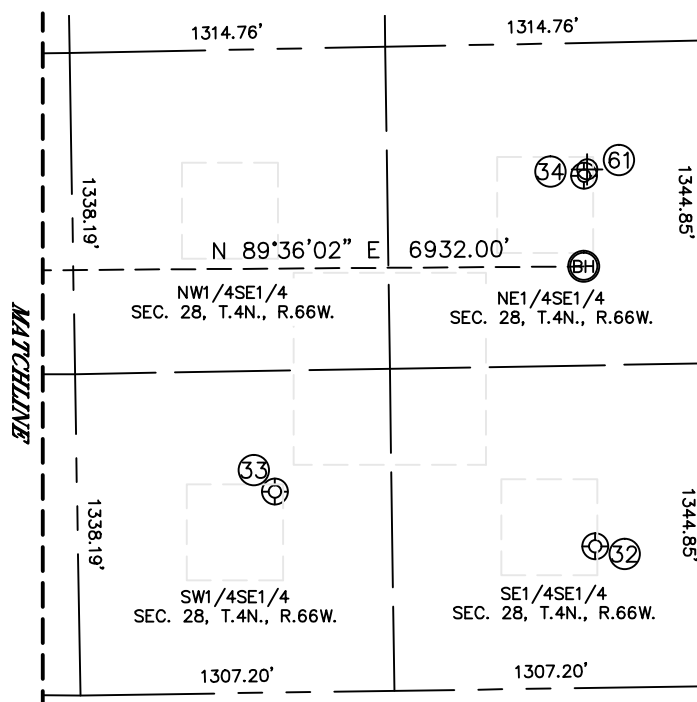
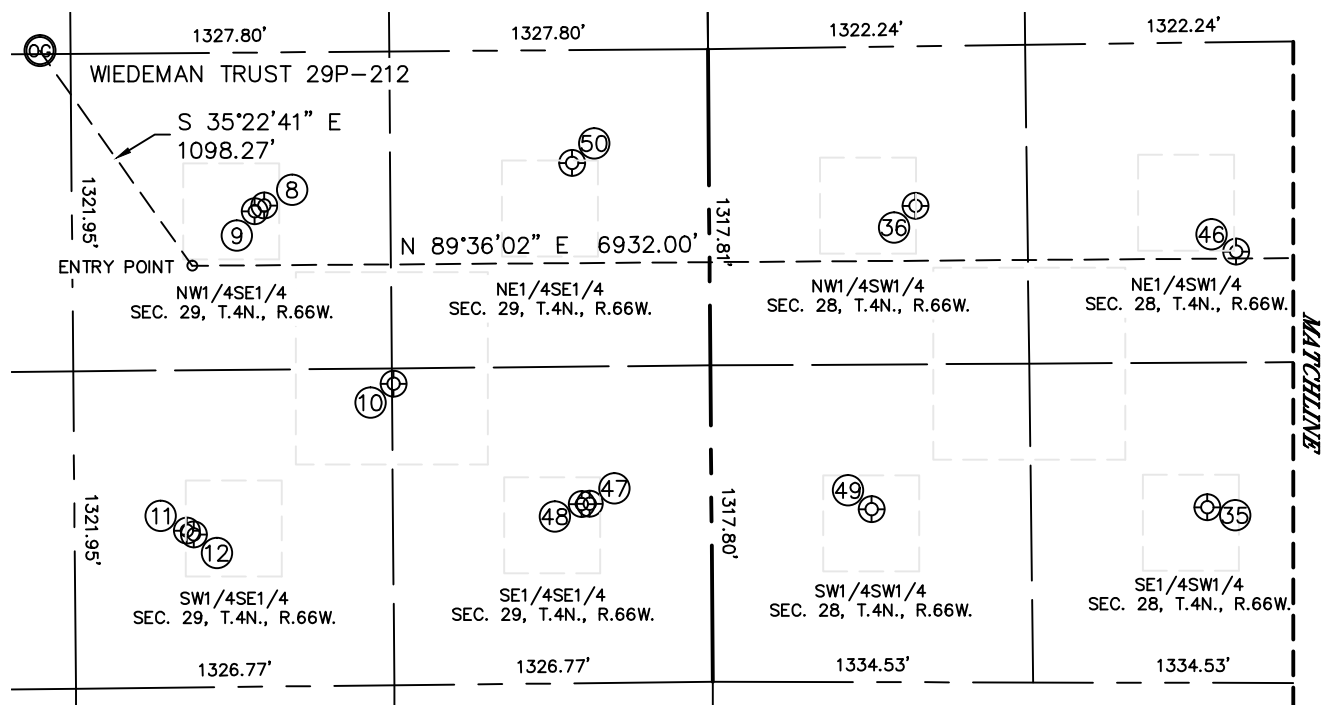


Lat40°, Inc. 1635 Foxtrail Drive, Suite 325 Loveland, CO 970-776-3321

# SITE SKETCH

WIEDEMAN TRUST 29P-212

SECTION: 29  
TOWNSHIP: 4N  
RANGE: 66W





Lat40°, Inc. 1635 Foxtrail Drive, Suite 325 Loveland, CO 970-776-3321

# SITE SKETCH

WIEDEMAN TRUST 29P-212

SECTION: 29  
TOWNSHIP: 4N  
RANGE: 66W

WELL NO.	WELL NAME	SHL FOOTAGE				SHL LAT°	SHL LONG°	PDOP	ELEV (FT.)	1/4/1/4
8	MCLEOD 8	2004	FSL	1854	FEL	40.28086	-104.79855	2.0	4770	NWSE
9	MCLEOD 29-1	1981	FSL	1894	FEL	40.28080	-104.79869	2.0	4771	NWSE
10	MCLEOD 6	1255	FSL	1321	FEL	40.27881	-104.79664	2.1	4769	SESE
11	MCLEOD 29-2	653	FSL	2187	FEL	40.27715	-104.79974	2.1	4773	SWSE
12	MCLEOD 29-29X	636	FSL	2158	FEL	40.27711	-104.79964	3.3	4772	SWSE
32	LORENZ 44-28	590	FSL	464	FEL	40.27696	-104.77465	1.9	4761	SESE
33	LORENZ 34-28	836	FSL	1796	FEL	40.27761	-104.77943	1.8	4756	SWSE
34	MELISSA 1	2134	FSL	494	FEL	40.28120	-104.77477	2.3	4748	NESE
35	KEISER 14-28	731	FSL	2065	FWL	40.27732	-104.78451	2.1	4753	SESW
36	DANNY B 12-28	1984	FSL	860	FWL	40.28080	-104.78883	1.8	4759	NWSW
46	RANDALL 11-28	1795	FSL	2194	FWL	40.28024	-104.78405	1.9	4754	NESW
47	MCLEOD 2	746	FSL	507	FEL	40.27742	-104.79373	2.0	4765	SESE
48	MCLEOD 2-29B	746	FSL	541	FEL	40.27742	-104.79385	1.7	4765	SESE
49	KEISER 13-28	720	FSL	667	FWL	40.27733	-104.78952	1.7	4761	SWSW
50	MCLEOD 29-41	2167	FSL	570	FEL	40.28132	-104.79395	1.8	4766	NESE
61	LORENZ 43-28	2160	FSL	480	FEL	40.28115	-104.77474	N/A	4744	NESE

NOTE: THE ABANDONED WELL DATA SHOWN IN RED ABOVE  
WAS OBTAINED FROM COGCC SCOUT CARDS.