

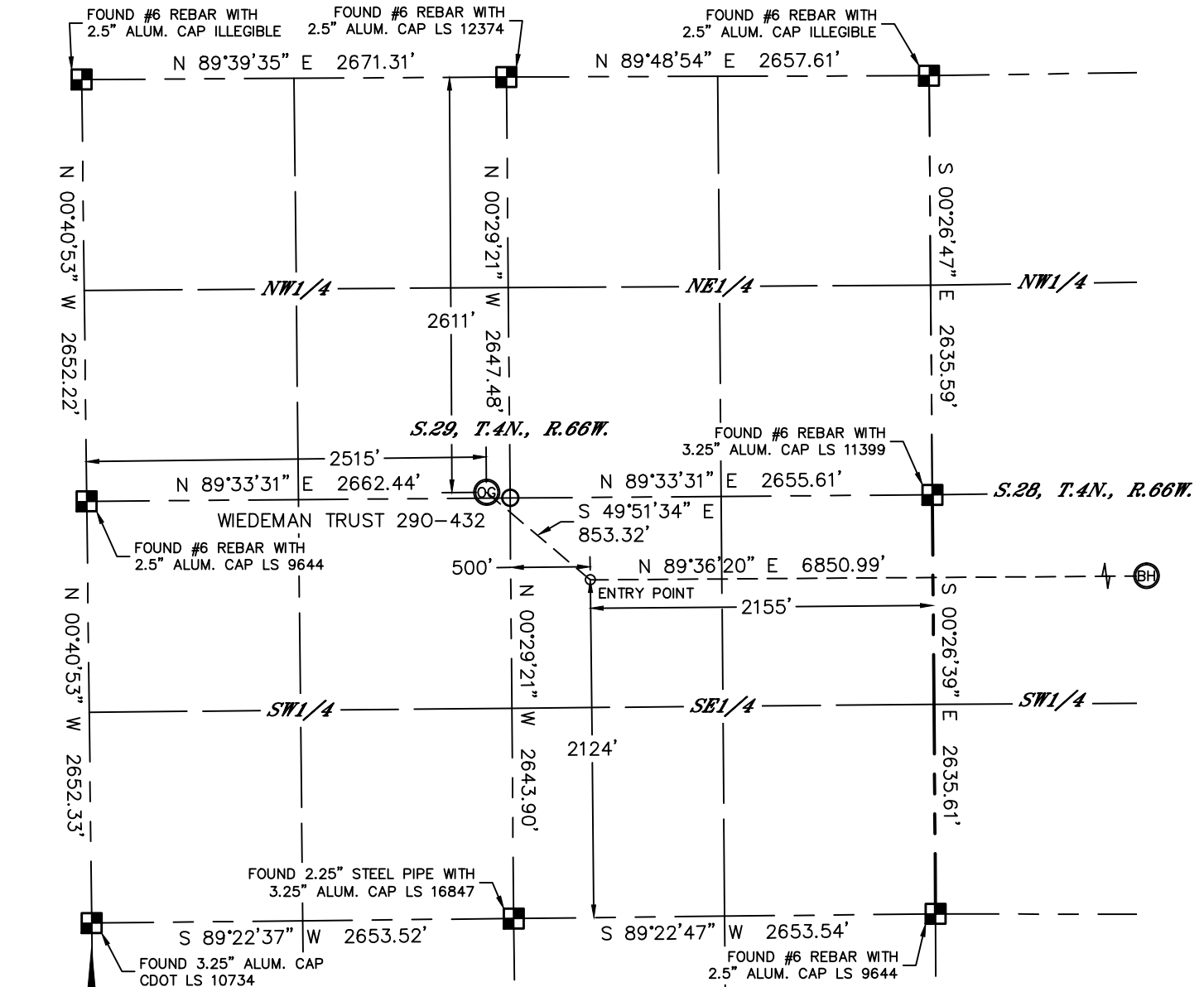


Lat40°, Inc. 1635 Foxtrail Drive, Suite 325 Loveland, CO 970-776-3321

WELL LOCATION CERTIFICATE

SECTION: 29
TOWNSHIP: 4N
RANGE: 66W

THIS MAP DOES NOT REPRESENT A BOUNDARY SURVEY



In accordance with a request from Mac Neumann with PDC ENERGY Lat40°, Inc. has determined the surface location of the WEDEMAN TRUST 290-432 to be 2611' from the NORTH line and 2515' from the WEST line as measured at right angles from the section lines of Section 29, Township 4 North, Range 66 West and the bottom hole to be 2124' from the SOUTH line and 580' from the EAST line as measured at right angles from the section lines of Section 28, Township 4 North, Range 66 West both of the Sixth Principal Meridian, County of Weld, State of Colorado.

I hereby state that this Well Location Certificate was prepared by me, or under my direct supervision, that the fieldwork was completed on 5/5/2014, for and on behalf of PDC ENERGY. That this is not a Land Survey Plat or an Improvement Survey Plat, and that it is not to be relied upon for establishment of fence, building, or other future improvement lines.

NOTE:

- 1) Bearings shown are Grid Bearings of the Colorado State Plane Coordinate System, North Zone, North American Datum 1983/2007. The lineal dimensions as contained herein are based upon the "U.S. Survey Foot."
- 2) Ground elevations are based on an observed GPS elevation (NAVD 1988 DATUM).
- 3) IMPROVEMENTS: See LOCATION DRAWING for all visible improvements within 500' of disturbed area.
- 4) SURFACE USE: CROP LAND
- 5) INSTRUMENT OPERATOR: ADAM KELLY
- 6) NEAREST CULTURAL ITEMS:
BUILDING: ±2111' E
BUILDING UNIT: ±2498' N
HIGH OCCUPANCY BUILDING UNIT: +5280'
DESIGNATED OUTSIDE ACTIVITY AREA: +5280'
PUBLIC ROAD: ±2502' W (HWY 60)
ABOVEGROUND UTILITY: 242' SE
RAILROAD: +5280'
PROPERTY LINE: ±249' SE

SURFACE LOCATION
LAT: 40.28271°N
LONG: 104.80195°W
PDOP: 1.8
ELEV: 4763'
1/4,1/4: SENW

BOTTOM HOLE
LAT: 40.28117°N
LONG: 104.77508°W
1/4,1/4: NESE

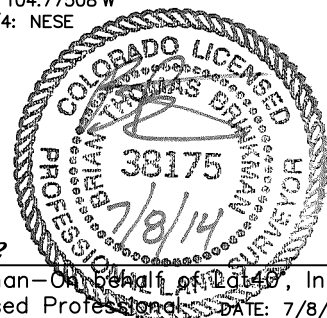
ENTRY POINT
LAT: 40.28119°N
LONG: 104.79963°W
1/4,1/4: NWSE

LEGEND

- = ALIQUOT MONUMENT AS DESCRIBED
○ = CALCULATED POSITION

SHEET 1 OF 2

Brian T. Brinkman—On behalf of Lat40°, Inc.
Colorado Licensed Professional Surveyor
Land Surveyor No. 38175
DATE: 7/8/2014
PROJECT#: 2013114

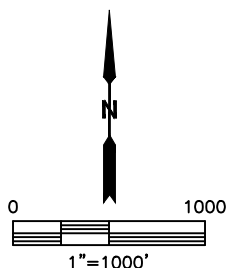
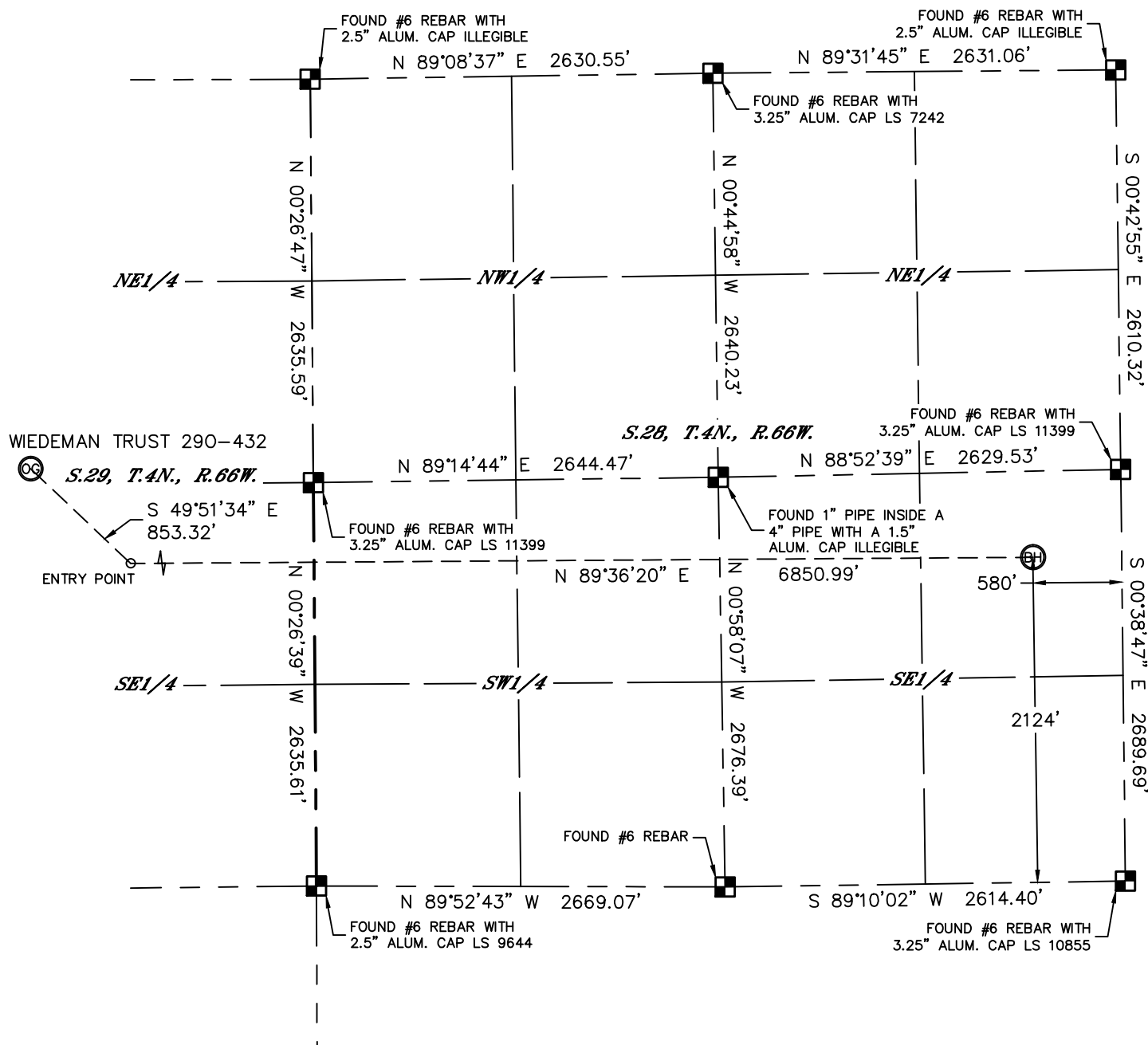


Lat40°, Inc. 1635 Foxtrail Drive, Suite 325 Loveland, CO 970-776-3321



WELL LOCATION CERTIFICATE

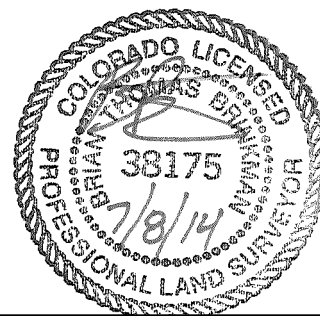
THIS MAP DOES NOT REPRESENT A BOUNDARY SURVEY

SECTION: 29
TOWNSHIP: 4N
RANGE: 66W



LEGEND

-  = ALIQUOT MONUMENT AS DESCRIBED
 = CALCULATED POSITION



SHEET 2 OF 2

Brian T. Brinkman—On behalf of Lat40^o, Inc.

Colorado Licensed Professional
Land Surveyor No. 38175

DATE: 7/8/2014
PROJECT#: 2013114

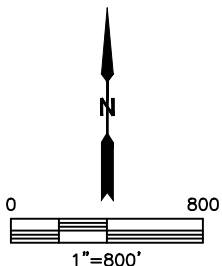
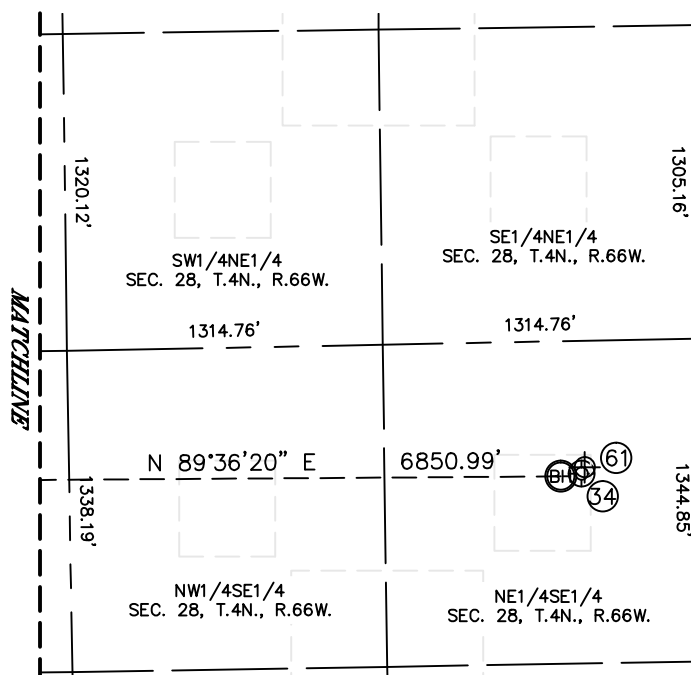
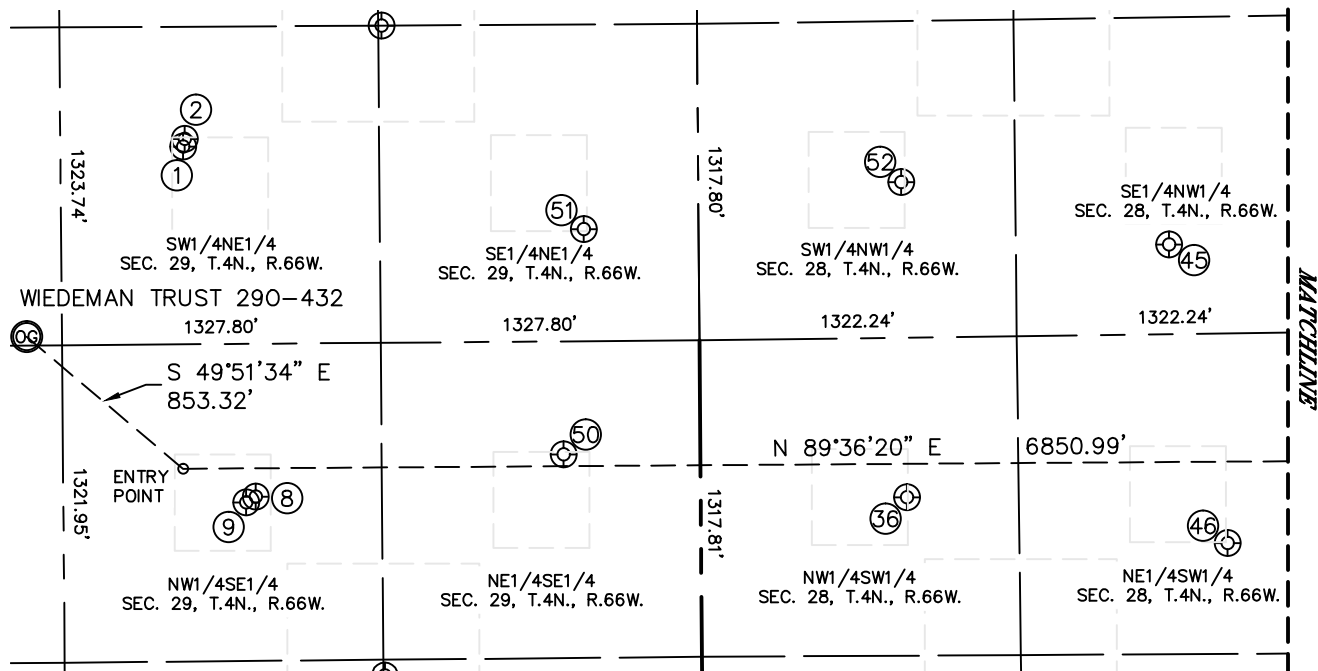


Lat40°, Inc. 1635 Foxtrail Drive, Suite 325 Loveland, CO 970-776-3321

SITE SKETCH

WIEDEMAN TRUST 290-432

SECTION: 29
TOWNSHIP: 4N
RANGE: 66W





Lat40°, Inc. 1635 Foxtrail Drive, Suite 325 Loveland, CO 970-776-3321

SITE SKETCH

WIEDEMAN TRUST 290-432

SECTION: 29
TOWNSHIP: 4N
RANGE: 66W

WELL NO.	WELL NAME	SHL FOOTAGE				SHL LAT°	SHL LONG°	PDOP	ELEV (FT.)	1/4/1/4
1	MCLEOD 7	1821	FNL	2145	FEL	40.28487	-104.79960	2.0	4760	SWNE
2	MCLEOD 29-13	1790	FNL	2138	FEL	40.28496	-104.79957	2.0	4760	SWNE
8	MCLEOD 8	2004	FSL	1854	FEL	40.28086	-104.79855	2.0	4770	NWSE
9	MCLEOD 29-1	1981	FSL	1894	FEL	40.28080	-104.79869	2.0	4771	NWSE
34	MELISSA 1	2134	FSL	494	FEL	40.28120	-104.77477	2.3	4748	NESE
36	DANNY B 12-28	1984	FSL	860	FWL	40.28080	-104.78883	1.8	4759	NWSW
45	KEISER 22-28	2266	FNL	1959	FWL	40.28366	-104.78489	1.8	4749	SENW
46	RANDALL 11-28	1795	FSL	2194	FWL	40.28024	-104.78405	1.9	4754	NESW
50	MCLEOD 29-41	2167	FSL	570	FEL	40.28132	-104.79395	1.8	4766	NESE
51	MCLEOD 29-14	2171	FNL	478	FEL	40.28389	-104.79362	1.9	4766	SENE
52	KORWICK 5-28	1990	FNL	845	FWL	40.28440	-104.78888	2.1	4758	SWNW
61	LORENZ 43-28	2160	FSL	480	FEL	40.28115	-104.77474	N/A	4744	NESE

NOTE: THE ABANDONED WELL DATA SHOWN IN RED ABOVE
WAS OBTAINED FROM COGCC SCOUT CARDS.