



Kerr-McGee Oil & Gas Onshore LP

A subsidiary of Anadarko Petroleum Corporation

1099 18th Street
Denver, CO 80202
720-929-6000

June 13, 2014

Department of Natural Resources
Oil and Gas Conservation Commission
The Chancery Building
1120 Lincoln St., Suite 801
Denver, CO 80203

Re: **30 Day Certification Letter - 318A.e**
SUMMIT 36N-32HZ
Township 2 North, Range 65 West, Section 29: SE/4SW/4
Unit Spacing: 01N-65W-Sec 05 NE/4NW/4, NW/4NE/4
02N-65W-Sec 29 SE/4SW/4, SW/4SE/4
02N-65W-Sec 32 E/2W/2, W/2E/2
Weld County, Colorado

Ladies/Gentlemen:

Kerr McGee Oil and Gas Onshore LP (“KMG”) hereby certifies to the Director that KMG owns one-hundred percent (100%) of the mineral rights in the proposed spacing unit. Therefore, KMG respectfully requests the Director to approve the boundary well.

If you have any questions or issues regarding this permit, please contact Cheryl Light at (720) 929-6461.

Very truly yours,

KERR-McGEE OIL AND GAS ONSHORE LP

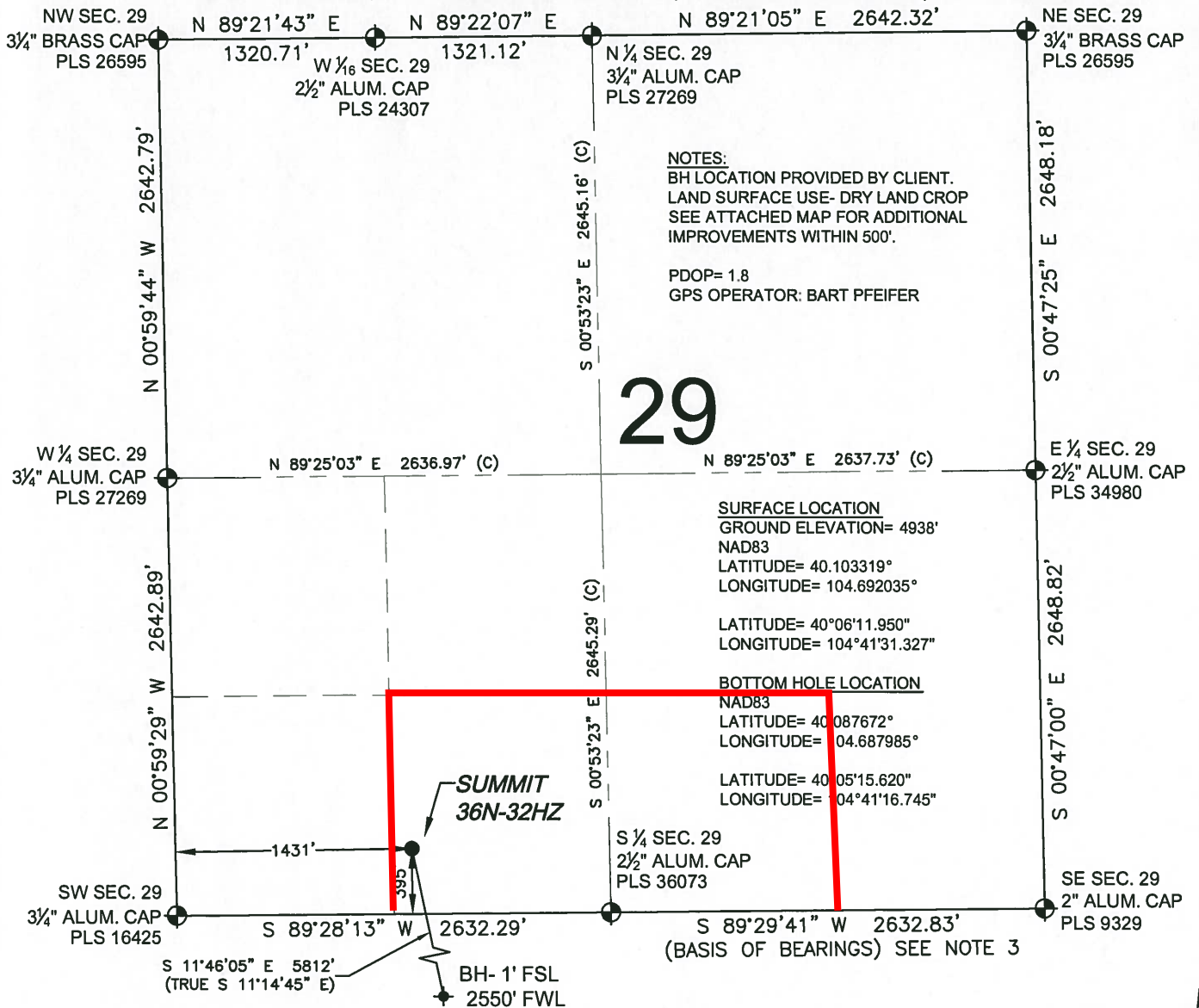
A handwritten signature in blue ink that reads "R Powers".

Ronett Powers
Regulatory Analyst II

PROPOSED SPACING UNIT

WELL LOCATION CERTIFICATE: SUMMIT 36N-32HZ

SECTION 29, TOWNSHIP 2 NORTH, RANGE 65 WEST, 6TH P.M.



NOTES:
 BH LOCATION PROVIDED BY CLIENT.
 LAND SURFACE USE- DRY LAND CROP
 SEE ATTACHED MAP FOR ADDITIONAL
 IMPROVEMENTS WITHIN 500'.

 PDOP= 1.8
 GPS OPERATOR: BART PFEIFER

SURFACE LOCATION
 GROUND ELEVATION= 4938'
 NAD83
 LATITUDE= 40.103319°
 LONGITUDE= 104.692035°

 LATITUDE= 40°06'11.950"
 LONGITUDE= 104°41'31.327"

BOTTOM HOLE LOCATION
 NAD83
 LATITUDE= 40°08'7672°
 LONGITUDE= 104.687985°

 LATITUDE= 40°05'15.620"
 LONGITUDE= 104°41'16.745"

WELL SUMMIT 36N-32HZ TO BE LOCATED 395' FSL AND 1431' FWL

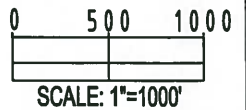
LEGEND

- ⊕ = EXISTING MONUMENT ⚡ = BOTTOM HOLE
- = PROPOSED WELL ◆ = EXISTING WELL
- BH = BOTTOM HOLE

- NOTES:**
1. THIS FIELD SURVEY CONFORMS TO THE MINIMUM STANDARDS SET BY THE C.O.G.C.C., RULE NO. 215
 2. HORIZONTAL POSITIONS AND ORTHOMETRIC ELEVATIONS SHOWN AT THE WELL HEAD, ARE BASED ON GPS-RTK POSITIONS DERIVED FROM MINIMUM 2-HOUR STATIC OBSERVATIONS CORRECTED BY THE NATIONAL GEODETIC SURVEY ONLINE POSITIONING USER SERVICE, O.P.U.S. DATUM: HORIZONTAL = NAD83/2011, VERTICAL = NAVD88
 3. THE BASIS OF BEARINGS ARE STATE PLANE COORDINATE SYSTEM GRID BEARINGS SHOWN HEREON BETWEEN THE DESCRIBED MONUMENTS SHOWN HEREON.
 4. GRID DISTANCES ARE SHOWN, AS MEASURED IN THE FIELD, WITH TIES TO WELLS MEASURED PERPENDICULAR TO SECTION LINES.

I, BRADLEY L. LAMAN, A LICENSED PROFESSIONAL LAND SURVEYOR IN THE STATE OF COLORADO DO HEREBY CERTIFY TO **KERR-MCGEE OIL & GAS ONSHORE LP**, THAT THE SURVEY AND WELL LOCATION CERTIFICATE SHOWN HEREON WERE DONE BY ME OR UNDER MY DIRECT SUPERVISION AND THAT THE DRAWING SHOWN HEREON ACCURATELY DEPICTS THE PROPOSED LOCATION OF THE WELL. THIS CERTIFICATE DOES NOT REPRESENT A LAND SURVEY PLAT OR IMPROVEMENT SURVEY PLAT AS DEFINED BY C.R.S. 38-51-102 AND CANNOT BE RELIED UPON TO DETERMINE OWNERSHIP.

BRADLEY L. LAMAN, PLS 38345
 COLORADO LICENSED PROFESSIONAL LAND SURVEYOR
 FOR AND ON BEHALF OF P.F.S., LLC



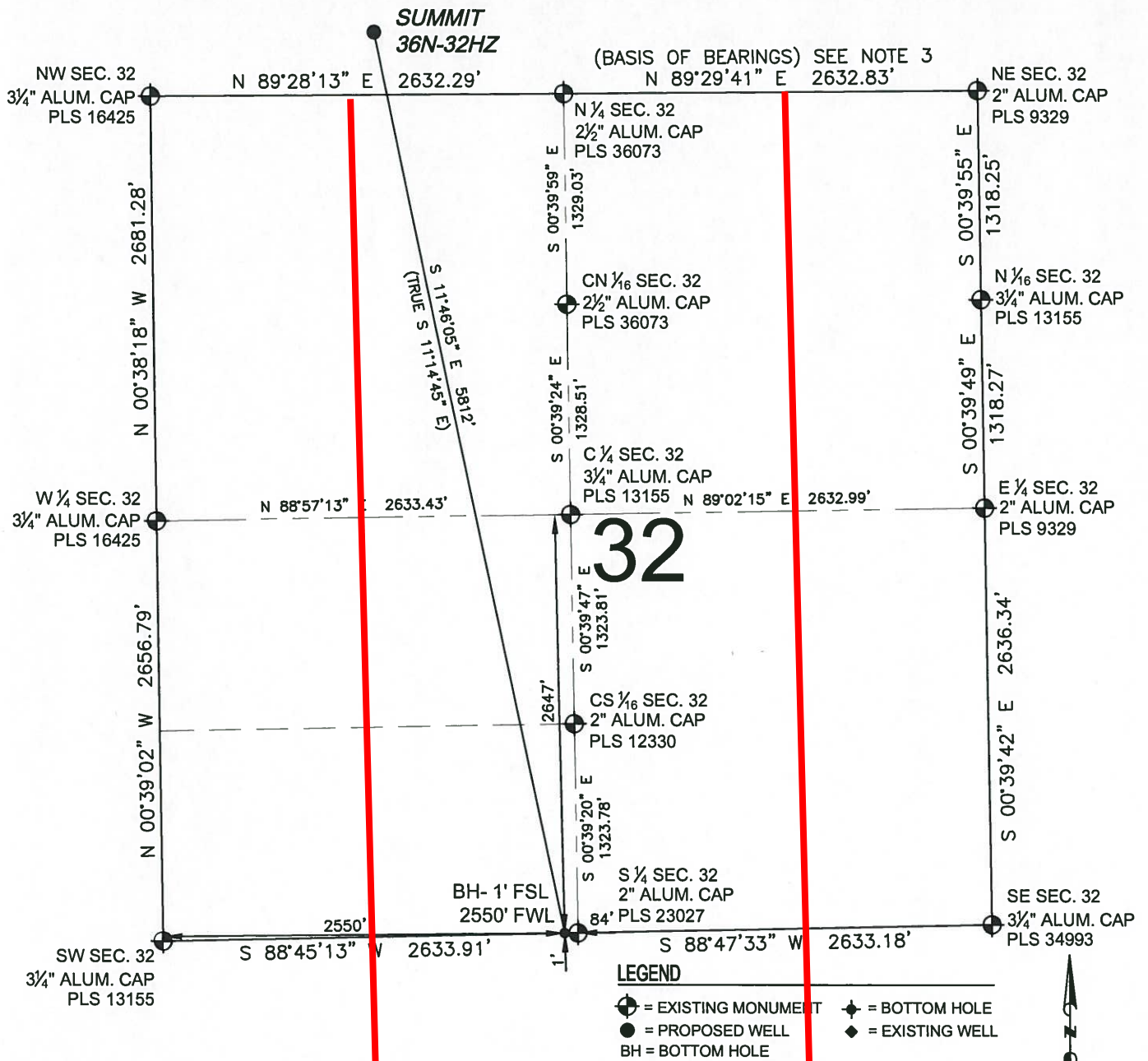
SHEET 1 OF 2

PREPARED BY: PFS Petroleum Field Services, LLC 1801 W. 13th Ave. Denver, CO 80204	FIELD DATE: 10-30-13 DRAWING DATE: 10-31-13 BY: JAH CHECKED: TJN	SURFACE LOCATION: SE 1/4, SW 1/4, SEC. 29, T2N, R65W, 6TH P.M. WELD COUNTY, COLORADO
--	---	---

NOTICE: ACCORDING TO COLORADO LAW YOU MUST COMMENCE ANY LEGAL ACTION BASED UPON ANY DEFECT IN THIS SURVEY WITHIN THREE YEARS AFTER YOU FIRST DISCOVER SUCH DEFECT. IN NO EVENT MAY ANY ACTION BASED UPON ANY DEFECT IN THIS SURVEY BE COMMENCED MORE THAN TEN YEARS FROM THIS SAID DATE OF THIS CERTIFICATION SHOWN HEREON.

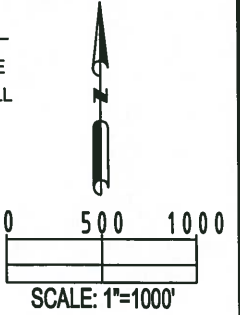
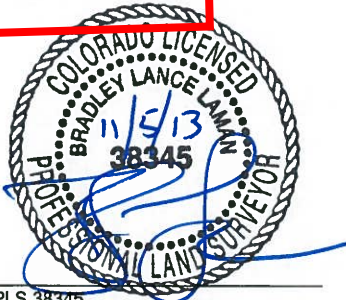
WELL LOCATION CERTIFICATE: SUMMIT 36N-32HZ

SECTION 32, TOWNSHIP 2 NORTH, RANGE 65 WEST, 6TH P.M.



LEGEND
 ⊕ = EXISTING MONUMENT ⊕ = BOTTOM HOLE
 ● = PROPOSED WELL ⊕ = EXISTING WELL
 BH = BOTTOM HOLE

- NOTES:**
1. THIS FIELD SURVEY CONFORMS TO THE MINIMUM STANDARDS SET BY THE C.O.G.C.C., RULE NO. 215
 2. HORIZONTAL POSITIONS AND ORTHOMETRIC ELEVATIONS SHOWN AT THE WELL HEAD, ARE BASED ON GPS-RTK POSITIONS DERIVED FROM MINIMUM 2-HOUR STATIC OBSERVATIONS CORRECTED BY THE NATIONAL GEODETIC SURVEY ONLINE POSITIONING USER SERVICE, O.P.U.S. DATUM: HORIZONTAL = NAD83/2011, VERTICAL = NAVD88
 3. THE BASIS OF BEARINGS ARE STATE PLANE COORDINATE SYSTEM GRID BEARINGS SHOWN HEREON BETWEEN THE DESCRIBED MONUMENTS SHOWN HEREON.
 4. GRID DISTANCES ARE SHOWN, AS MEASURED IN THE FIELD, WITH TIES TO WELLS MEASURED PERPENDICULAR TO SECTION LINES.



BRADLEY L. LAMAN, PLS 38345
 COLORADO LICENSED PROFESSIONAL LAND SURVEYOR
 FOR AND ON BEHALF OF P.F.S., LLC

SHEET 2 OF 2

PREPARED BY: 1801 W. 13th Ave. Denver, CO 80204	FIELD DATE: 10-30-13	SURFACE LOCATION: SE 1/4, SW 1/4, SEC. 29, T2N, R65W, 6TH P.M.
	DRAWING DATE: 10-31-13	WELD COUNTY, COLORADO
BY: JAH	CHECKED: TJN	

NOTICE: ACCORDING TO COLORADO LAW YOU MUST COMMENCE ANY LEGAL ACTION BASED UPON ANY DEFECT IN THIS SURVEY WITHIN THREE YEARS AFTER YOU FIRST DISCOVER SUCH DEFECT. IN NO EVENT MAY ANY ACTION BASED UPON ANY DEFECT IN THIS SURVEY BE COMMENCED MORE THAN TEN YEARS FROM THIS SAID DATE OF THIS CERTIFICATION SHOWN HEREON.