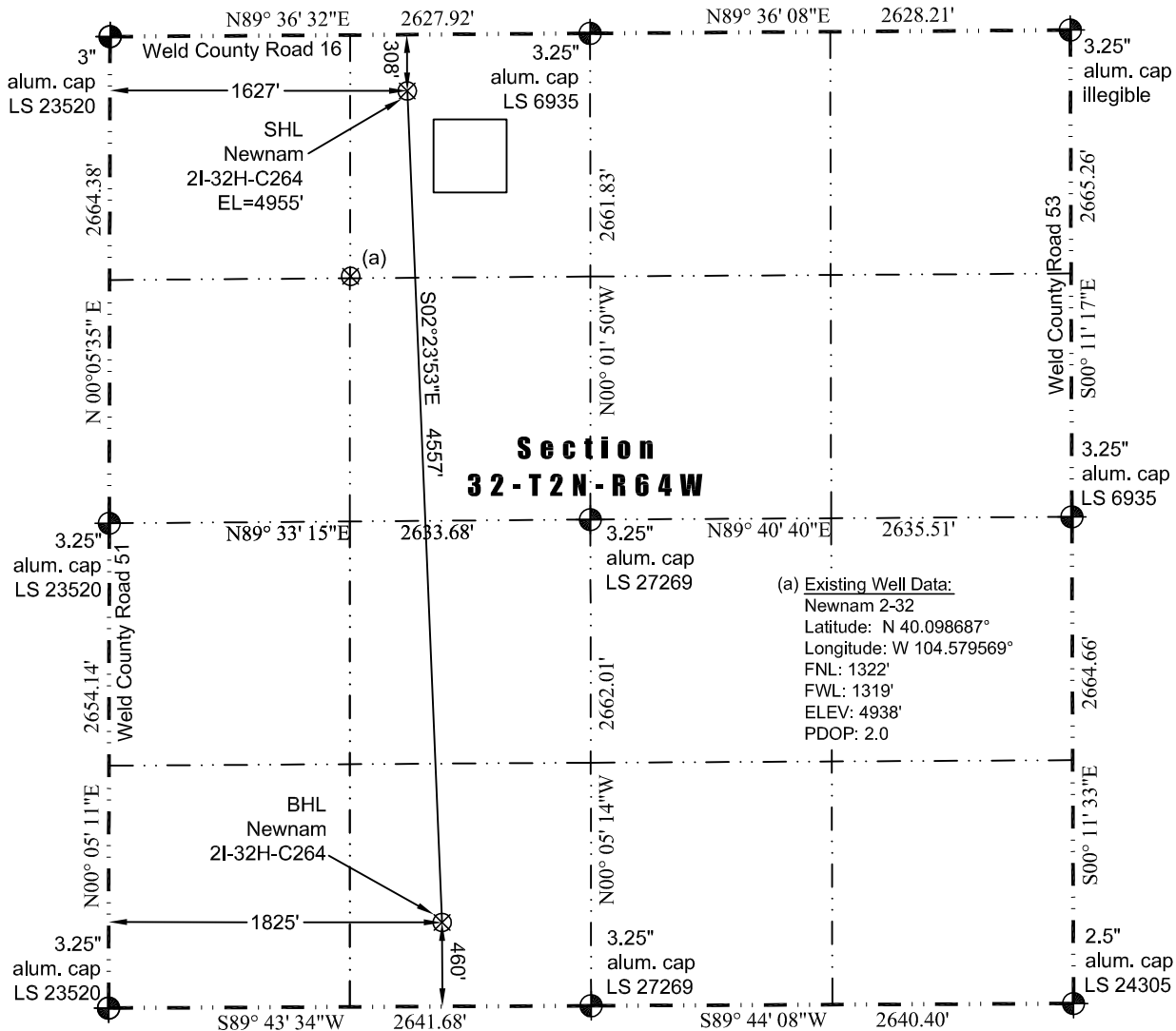




WELL LOCATION CERTIFICATE

THIS MAP DOES NOT REPRESENT A BOUNDARY SURVEY

Washburn Land Surveying
www.WashburnSurveying.com
970-232-9645



Scale 1" = 1000'
approximate scale

LEGEND
— found survey monument
— calculated dimension
(c)

In accordance with a request from Jay Knutson of EnCana Oil & Gas (USA) Inc., Washburn Land Surveying, LLC has determined the location of the **Newnam 2I-32H-C264** well site to be SHL: 308' FNL and 1627' FWL, (BHL: 460' FSL and 1825' FWL), as measured at ninety (90) degrees from the section lines of Section 32, Township 2 North, Range 64 West of the 6th Principal Meridian, Weld County Colorado.

Proposed Surface Hole Data:

Latitude: N 40.101466° (BHL: 40.088963°)
Longitude: W 104.578423° (BHL: 104.577910°)
PDOP: 1.6

Nearest:

Building: 800' northeast
Building Unit: 1001' northeast
Public Road: 299' north
Property Line: 308' north
Existing Well: Newnam 2-32; 1062' southwest

Above Ground Utility: 336' north
Railroad: 2297' northwest
Well Window: SHL is 212' outside
High Occupancy Building Unit: +5280'

Notes:

- 1) Bearings and distances based on NAD 83 Colorado North State Plane Coordinate. using RTK GPS observations taken 7/08/14 by operator Ryan Christi
- 2) Conversion factor to ground (1.0002793972).
- 3) Elevations based on NAVD 88 GPS heights and Geoid 2003 corrections.
- 4) See Location Drawing for visible improvements within 500 feet of Pad Site.
- 5) The surface use is a cultivated field.

NOTICE: According to Colorado law you must commence any legal action based upon any defect in this W.L.C. within three years after you first discover such defect. In no event may any action based upon any defect in this W.L.C. be commenced more than ten years from this said date of the certification shown hereon.

