

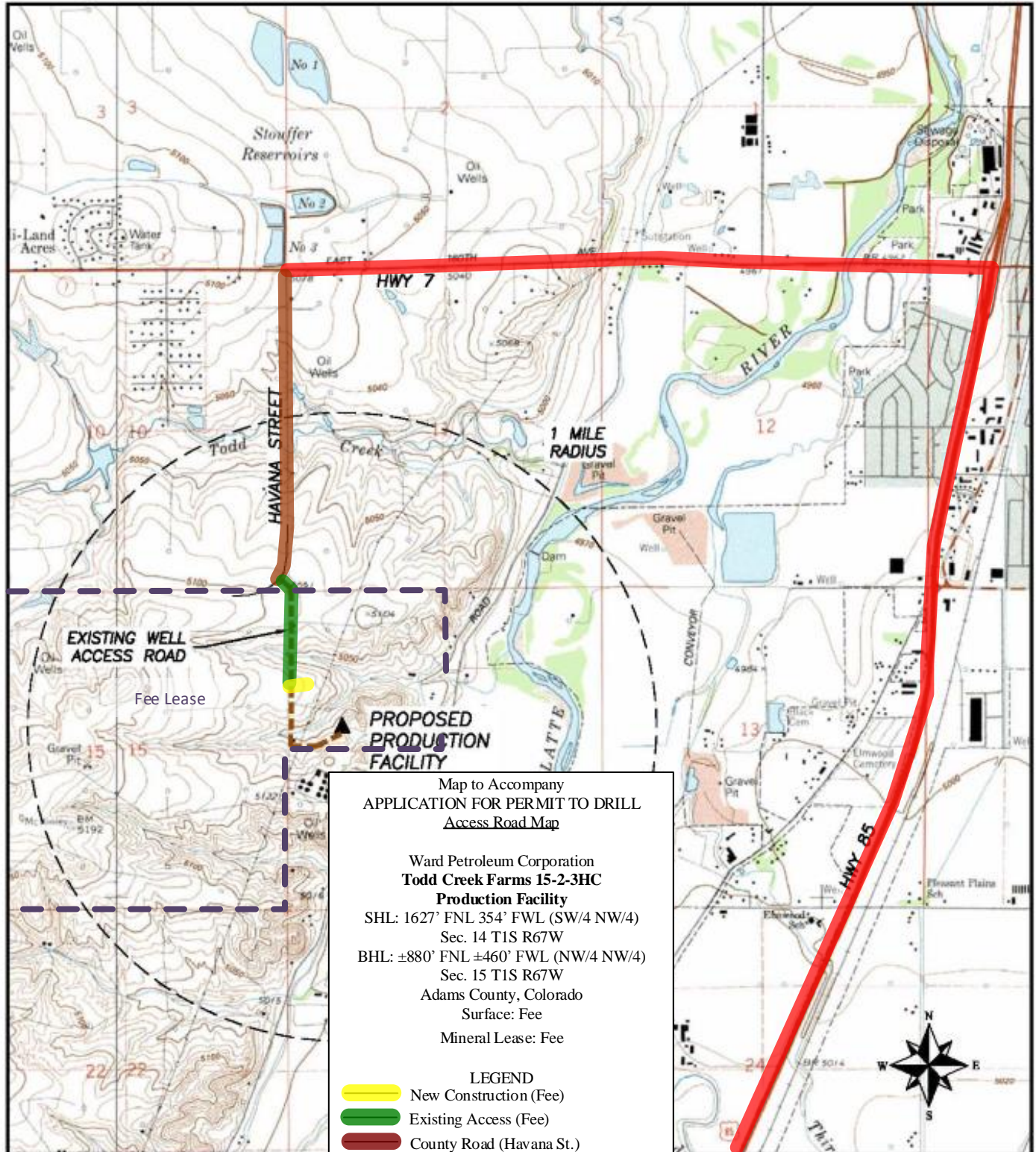
DALEY LAND SURVEYING, INC.

PARKER, CO. 80134

303 953 9841

PRODUCTION FACILITY ACCESS ROAD MAP TODD CREEK FARMS 15-2-3HC

SECTION 14, TOWNSHIP 1 SOUTH, RANGE 67 WEST OF THE 6TH PRINCIPAL MERIDIAN



Map to Accompany
APPLICATION FOR PERMIT TO DRILL
Access Road Map

Ward Petroleum Corporation
**Todd Creek Farms 15-2-3HC
Production Facility**

SHL: 1627' FNL 354' FWL (SW/4 NW/4)
Sec. 14 T1S R67W
BHL: ±880' FNL ±460' FWL (NW/4 NW/4)
Sec. 15 T1S R67W
Adams County, Colorado
Surface: Fee
Mineral Lease: Fee

LEGEND

- New Construction (Fee)
- Existing Access (Fee)
- County Road (Havanna St.)
- State Highway

Revised by Upstream Petroleum Management, Inc.