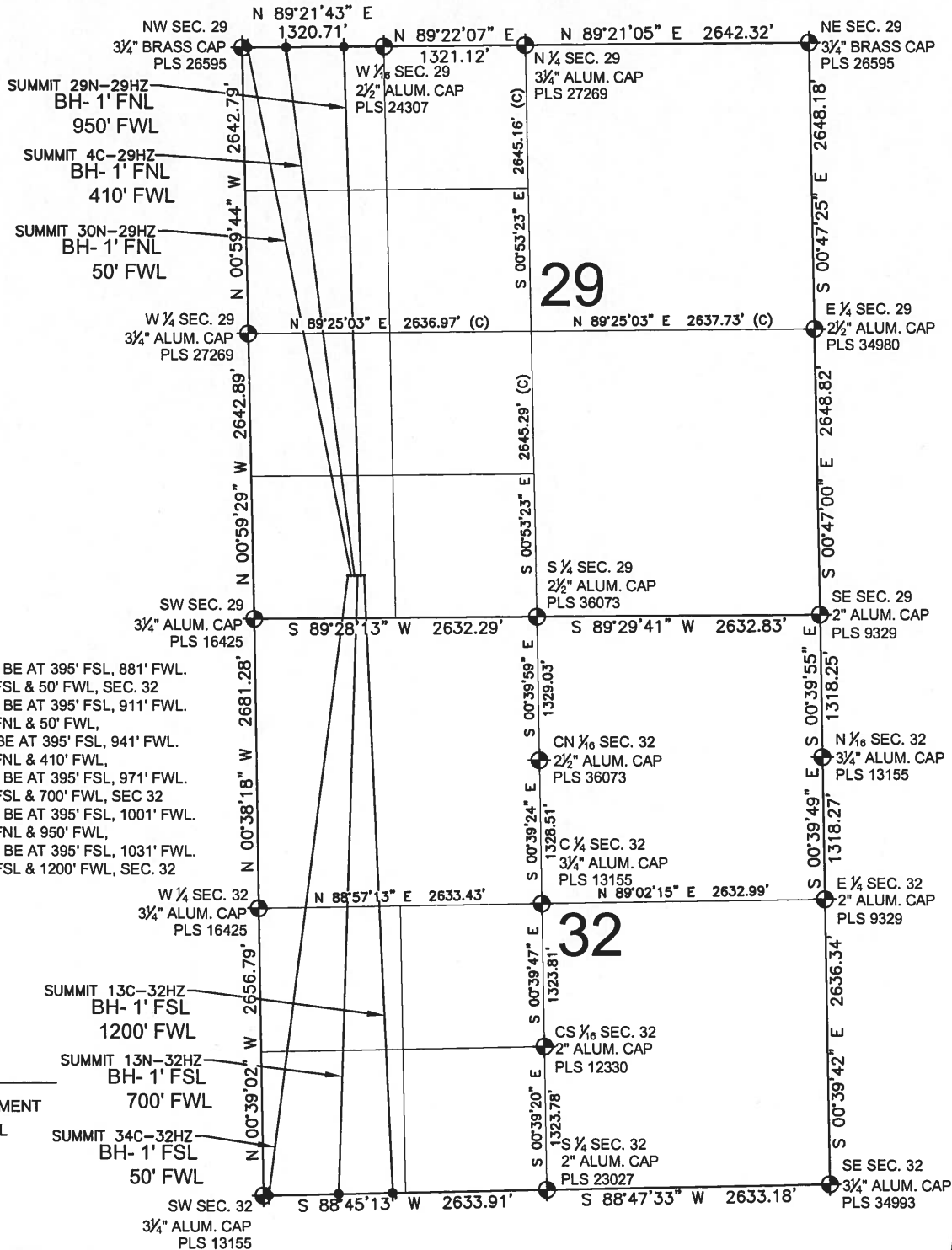


# SUMMIT 4C-29HZ MULTI-WELL PLAN

SECTION 29, TOWNSHIP 2 NORTH, RANGE 65 WEST, 6TH P.M.



**NOTES:**

- SUMMIT 34C-32HZ TO BE AT 395' FSL, 881' FWL.
- BOTTOM HOLE AT 1' FSL & 50' FWL, SEC. 32
- SUMMIT 30N-29HZ TO BE AT 395' FSL, 911' FWL.
- BOTTOM HOLE AT 1' FNL & 50' FWL,
- SUMMIT 4C-29HZ TO BE AT 395' FSL, 941' FWL.
- BOTTOM HOLE AT 1' FNL & 410' FWL,
- SUMMIT 13N-32HZ TO BE AT 395' FSL, 971' FWL.
- BOTTOM HOLE AT 1' FSL & 700' FWL, SEC 32
- SUMMIT 29N-29HZ TO BE AT 395' FSL, 1001' FWL.
- BOTTOM HOLE AT 1' FNL & 950' FWL,
- SUMMIT 13C-32HZ TO BE AT 395' FSL, 1031' FWL.
- BOTTOM HOLE AT 1' FSL & 1200' FWL, SEC. 32

**LEGEND**

- ⊕ = EXISTING MONUMENT
- = PROPOSED WELL
- ⊙ = BOTTOM HOLE
- ◊ = EXISTING WELL
- BH= BOTTOM HOLE

PREPARED BY:



KERR-MCGEE OIL & GAS ONSHORE LP

FIELD DATE:

10-10-13

DRAWING DATE:

10-10-13

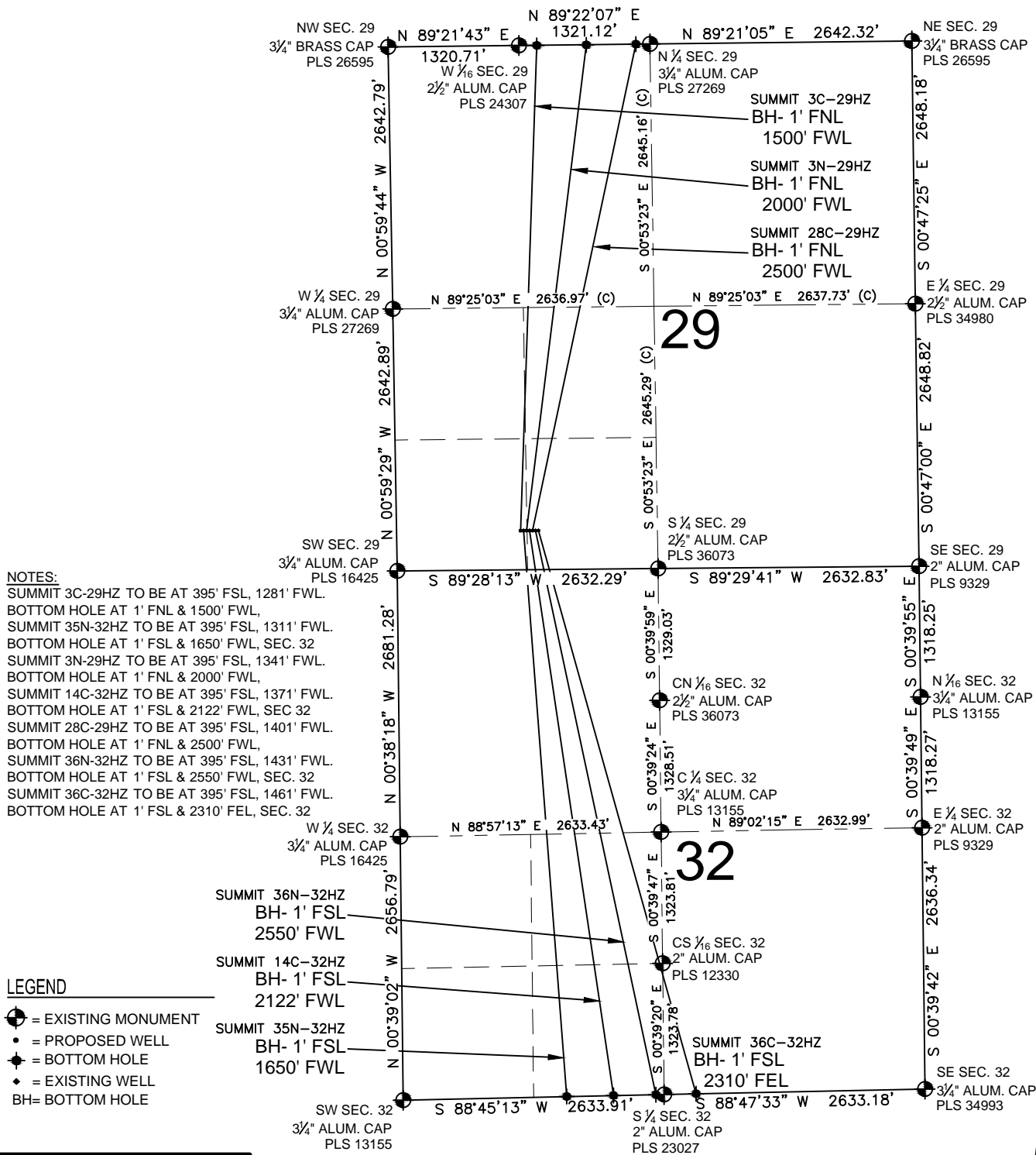
SURFACE LOCATION:

SW 1/4 SW 1/4, SEC. 29, T2N, R65W, 6TH P.M.  
WELD COUNTY, COLORADO



# SUMMIT 4C-29HZ MULTI-WELL PLAN

SECTION 29, TOWNSHIP 2 NORTH, RANGE 65 WEST, 6TH P.M.



**NOTES:**  
 SUMMIT 3C-29HZ TO BE AT 395' FSL, 1281' FWL.  
 BOTTOM HOLE AT 1' FNL & 1500' FWL.  
 SUMMIT 35N-32HZ TO BE AT 395' FSL, 1311' FWL.  
 BOTTOM HOLE AT 1' FSL & 1650' FWL, SEC. 32  
 SUMMIT 3N-29HZ TO BE AT 395' FSL, 1341' FWL.  
 BOTTOM HOLE AT 1' FNL & 2000' FWL.  
 SUMMIT 14C-32HZ TO BE AT 395' FSL, 1371' FWL.  
 BOTTOM HOLE AT 1' FSL & 2122' FWL, SEC. 32  
 SUMMIT 28C-29HZ TO BE AT 395' FSL, 1401' FWL.  
 BOTTOM HOLE AT 1' FNL & 2500' FWL.  
 SUMMIT 36N-32HZ TO BE AT 395' FSL, 1431' FWL.  
 BOTTOM HOLE AT 1' FSL & 2550' FWL, SEC. 32  
 SUMMIT 36C-32HZ TO BE AT 395' FSL, 1461' FWL.  
 BOTTOM HOLE AT 1' FSL & 2310' FEL, SEC. 32

**LEGEND**

- = EXISTING MONUMENT
- = PROPOSED WELL
- ◆ = BOTTOM HOLE
- ◐ = EXISTING WELL
- BH= BOTTOM HOLE

PREPARED BY:



**PFS** llc  
 Petroleum Field Services, LLC  
 7535 Hilltop Circle  
 Denver, CO 80221

KERR-MCGEE OIL & GAS ONSHORE LP

FIELD DATE:	10-30-13	SURFACE LOCATION:	SE 1/4 SW 1/4, SEC. 29, T2N, R65W, 6TH P.M.
DRAWING DATE:	03-20-14		WELD COUNTY, COLORADO

