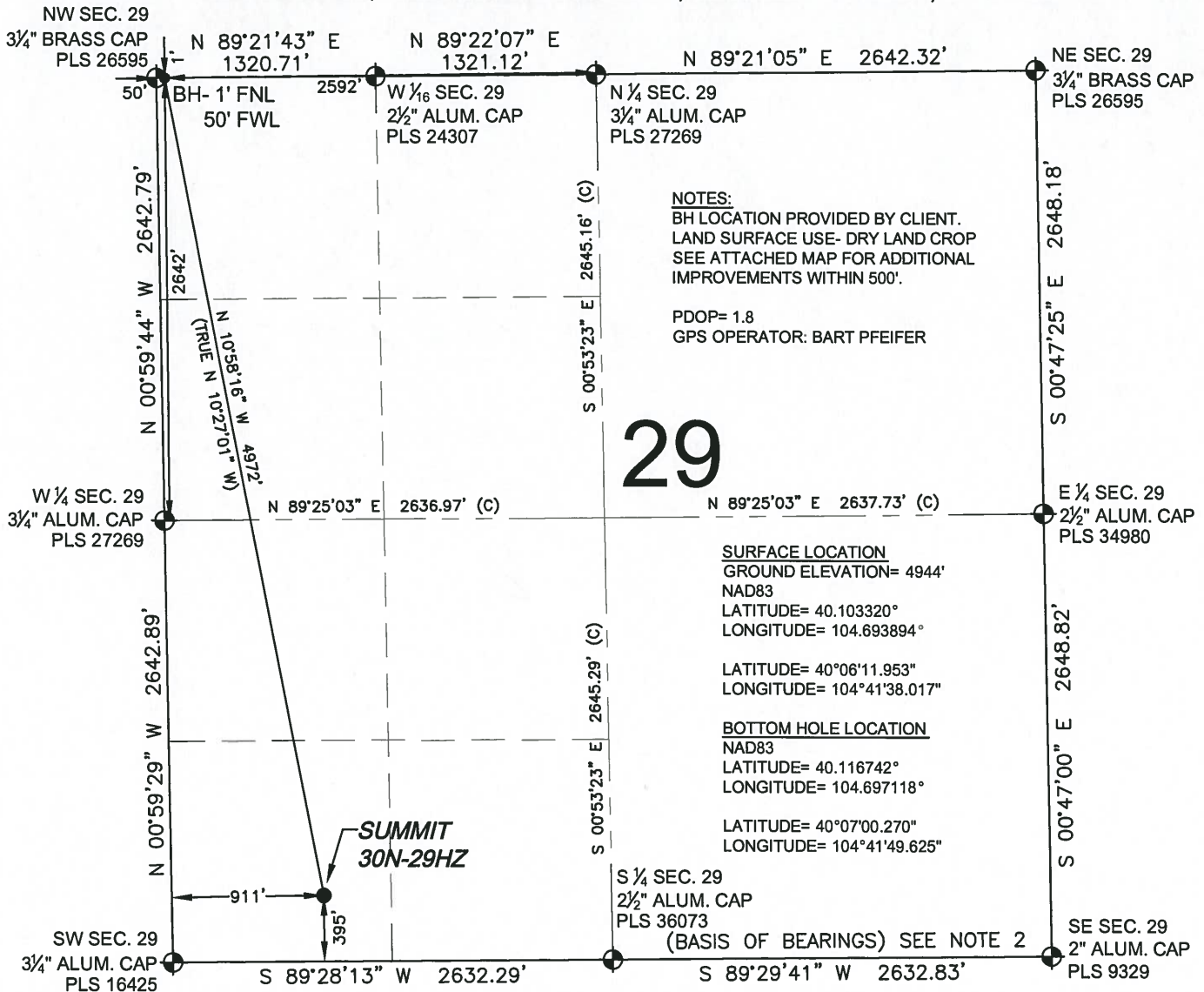


WELL LOCATION CERTIFICATE: SUMMIT 30N-29HZ

SECTION 29, TOWNSHIP 2 NORTH, RANGE 65 WEST, 6TH P.M.



NOTES:
 BH LOCATION PROVIDED BY CLIENT.
 LAND SURFACE USE- DRY LAND CROP
 SEE ATTACHED MAP FOR ADDITIONAL
 IMPROVEMENTS WITHIN 500'.

PDOP= 1.8
 GPS OPERATOR: BART PFEIFER

29

SURFACE LOCATION
 GROUND ELEVATION= 4944'
 NAD83
 LATITUDE= 40.103320°
 LONGITUDE= 104.693894°

LATITUDE= 40°06'11.953"
 LONGITUDE= 104°41'38.017"

BOTTOM HOLE LOCATION
 NAD83
 LATITUDE= 40.116742°
 LONGITUDE= 104.697118°

LATITUDE= 40°07'00.270"
 LONGITUDE= 104°41'49.625"

S 1/4 SEC. 29
 2 1/2" ALUM. CAP
 PLS 36073
 (BASIS OF BEARINGS) SEE NOTE 2

WELL SUMMIT 30N-29HZ TO BE LOCATED 395' FSL AND 911' FWL

LEGEND

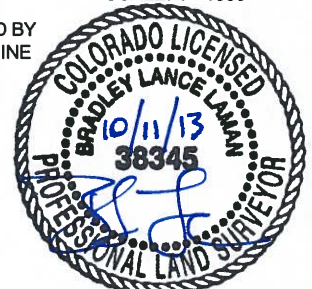
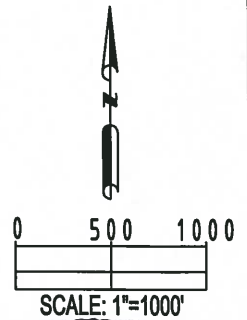
- ⊕ = EXISTING MONUMENT
- ⬠ = PROPOSED WELL
- ⬠ = BOTTOM HOLE
- ⬠ = EXISTING WELL
- BH = BOTTOM HOLE

NOTES:

- THIS FIELD SURVEY CONFORMS TO THE MINIMUM STANDARDS SET BY THE C.O.G.C.C., RULE NO. 215
- BEARINGS AND DISTANCES SHOWN HEREON ARE GRID AND BASED ON THE COLORADO STATE PLANE COORDINATE SYSTEM, NAD 83/2011 BETWEEN MONUMENTS AS LABELED HEREON AND ELEVATIONS SHOWN ARE NAVD 88, AS DERIVED BY GPS OBSERVATIONS
- GRID DISTANCES ARE SHOWN, AS MEASURED IN THE FIELD, WITH TIES TO WELLS MEASURED PERPENDICULAR TO SECTION LINES.

I, BRADLEY L. LAMAN, A LICENSED PROFESSIONAL LAND SURVEYOR IN THE STATE OF COLORADO DO HEREBY CERTIFY TO **KERR-MCGEE OIL & GAS ONSHORE LP**, THAT THE SURVEY AND WELL LOCATION CERTIFICATE SHOWN HEREON WERE DONE BY ME OR UNDER MY DIRECT SUPERVISION AND THAT THE DRAWING SHOWN HEREON ACCURATELY DEPICTS THE PROPOSED LOCATION OF THE WELL. THIS CERTIFICATE DOES NOT REPRESENT A LAND SURVEY PLAT OR IMPROVEMENT SURVEY PLAT AS DEFINED BY C.R.S. 38-51-102 AND CANNOT BE RELIED UPON TO DETERMINE OWNERSHIP.

BRADLEY L. LAMAN, PLS 38345
 COLORADO LICENSED PROFESSIONAL LAND SURVEYOR
 FOR AND ON BEHALF OF P.F.S., LLC



PREPARED BY: PFS Petroleum Field Services, LLC 7535 Hilltop Circle Denver, CO 80221	FIELD DATE: 10-10-13 DRAWING DATE: 10-10-13 BY: SMF CHECKED: TJN	SURFACE LOCATION: SW 1/4, SW 1/4, SEC. 29, T2N, R65W, 6TH P.M. WELD COUNTY, COLORADO
--	---	---

NOTICE: ACCORDING TO COLORADO LAW YOU MUST COMMENCE ANY LEGAL ACTION BASED UPON ANY DEFECT IN THIS SURVEY WITHIN THREE YEARS AFTER YOU FIRST DISCOVER SUCH DEFECT. IN NO EVENT MAY ANY ACTION BASED UPON ANY DEFECT IN THIS SURVEY BE COMMENCED MORE THAN TEN YEARS FROM THIS SAID DATE OF THIS CERTIFICATION SHOWN HEREON.