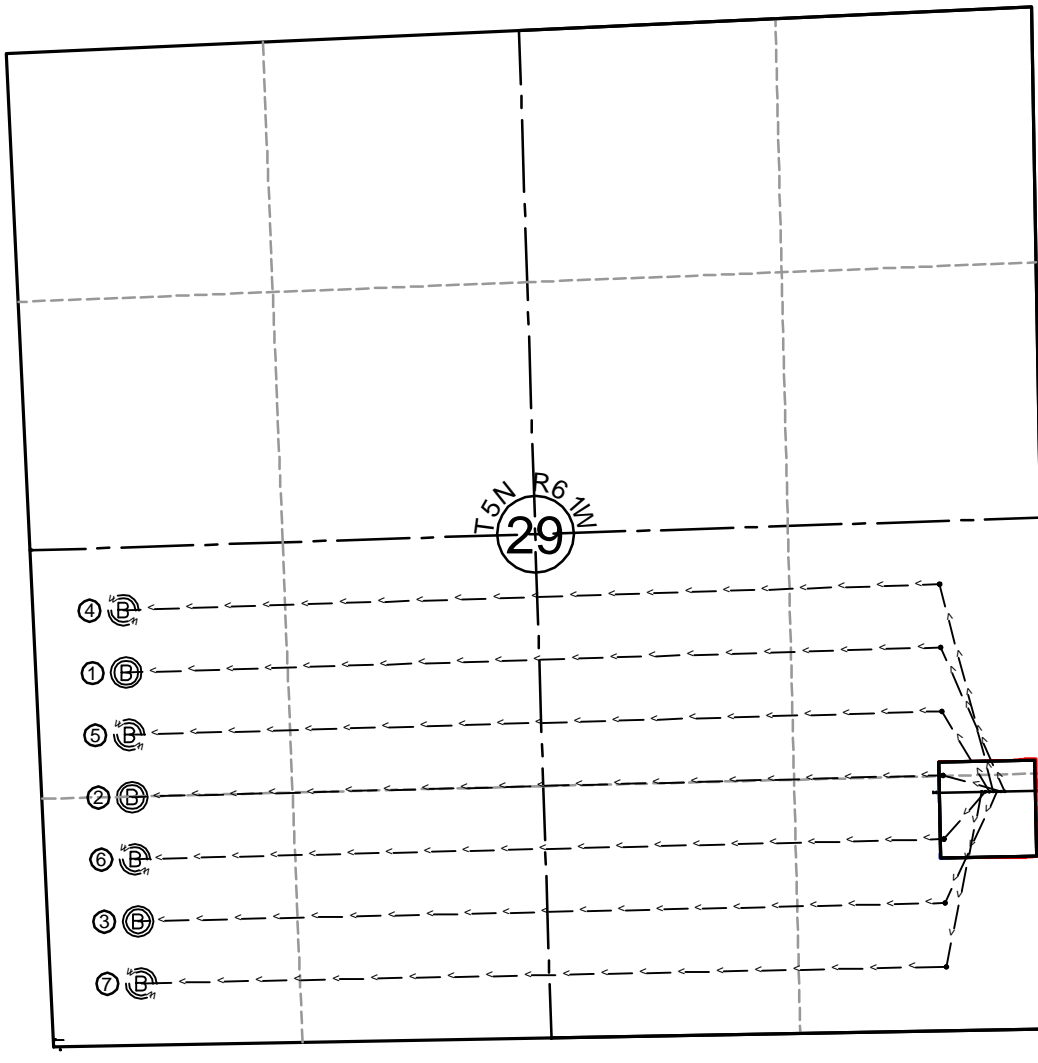


C:\FES PROJECTS\1319-01_BONANZA\5N-61W.dwg\5N-61W LAYOUT.dwg SAVED DATE 2014-05-02 06:05

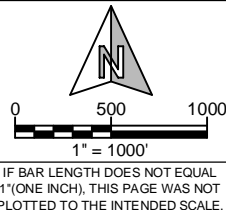


- | | | | |
|--|--|---|--|
| <p>① <u>PRONGHORN 43-13-29HNB</u>
1240'FSL, 210'FEL
<u>SURFACE LOCATION: (NAD83)</u>
<u>GEODETTIC COORDINATES</u>
LAT 40.36797°
LONG 104.22434°
<u>TARGET #1: (NAD83)</u>
<u>GEODETTIC COORDINATES</u>
LAT 40.37004°
LONG 104.22550°
<u>BOTTOM HOLE LOCATION:</u>
<u>GEODETTIC COORDINATES</u>
LAT 40.36895°
LONG 104.24073°</p> | <p>② <u>PRONGHORN X-D-29HNC</u>
1240'FSL, 230'FEL
<u>SURFACE LOCATION: (NAD83)</u>
<u>GEODETTIC COORDINATES</u>
LAT 40.36797°
LONG 104.22442°
<u>TARGET #1: (NAD83)</u>
<u>GEODETTIC COORDINATES</u>
LAT 40.36821°
LONG 104.22550°
<u>BOTTOM HOLE LOCATION:</u>
<u>GEODETTIC COORDINATES</u>
LAT 40.36807°
LONG 104.24066°</p> | <p>③ <u>PRONGHORN 44-14-29HNB</u>
1240'FSL, 250'FEL
<u>SURFACE LOCATION: (NAD83)</u>
<u>GEODETTIC COORDINATES</u>
LAT 40.36797°
LONG 104.22449°
<u>TARGET #1: (NAD83)</u>
<u>GEODETTIC COORDINATES</u>
LAT 40.36639°
LONG 104.22549°
<u>BOTTOM HOLE LOCATION:</u>
<u>GEODETTIC COORDINATES</u>
LAT 40.36629°
LONG 104.24058</p> | <p>④ <u>PRONGHORN X29-A1-29</u>
1240'FSL, 270'FEL
<u>SURFACE LOCATION: (NAD83)</u>
LAT 40.36797°
LONG 104.22456°</p> |
| <p>⑤ <u>PRONGHORN X29-A2-29</u>
1240'FSL, 290'FEL
<u>SURFACE LOCATION: (NAD83)</u>
LAT 40.36797°
LONG 104.22463°</p> | <p>⑥ <u>PRONGHORN X29-A3-29</u>
1240'FSL, 310'FEL
<u>SURFACE LOCATION: (NAD83)</u>
LAT 40.36797°
LONG 104.22470°</p> | <p>⑦ <u>PRONGHORN X29-A4-29</u>
1240'FSL, 330'FEL
<u>SURFACE LOCATION: (NAD83)</u>
LAT 40.36797°
LONG 104.22478°</p> | |

SHEET NO:
2 of 7



Drawn By: DAF
Checked By: JS
Date: 4/30/14
Revision:
Date:
Explanation:



MULTI-WELL PLAN

PRONGHORN X-29 PAD
SE¹/₄, SECTION 29,
T.5N., R.61W., 6th PM
WELD COUNTY, COLORADO

