

OPERATOR: **WPX ENERGY**

WELL NAME: PA 313-6  
FIELD NAME: PARACHUTE  
DRILLING RIG: NABORS 574  
API #: 05-045-22225

LOCATION: SEC. 6 T 7 S R 95 W  
SURFACE HOLE: 755' FSL, 738' FWL  
BOTTOM HOLE: 2170' FSL, 346' FS  
SCALE: 1"=100'



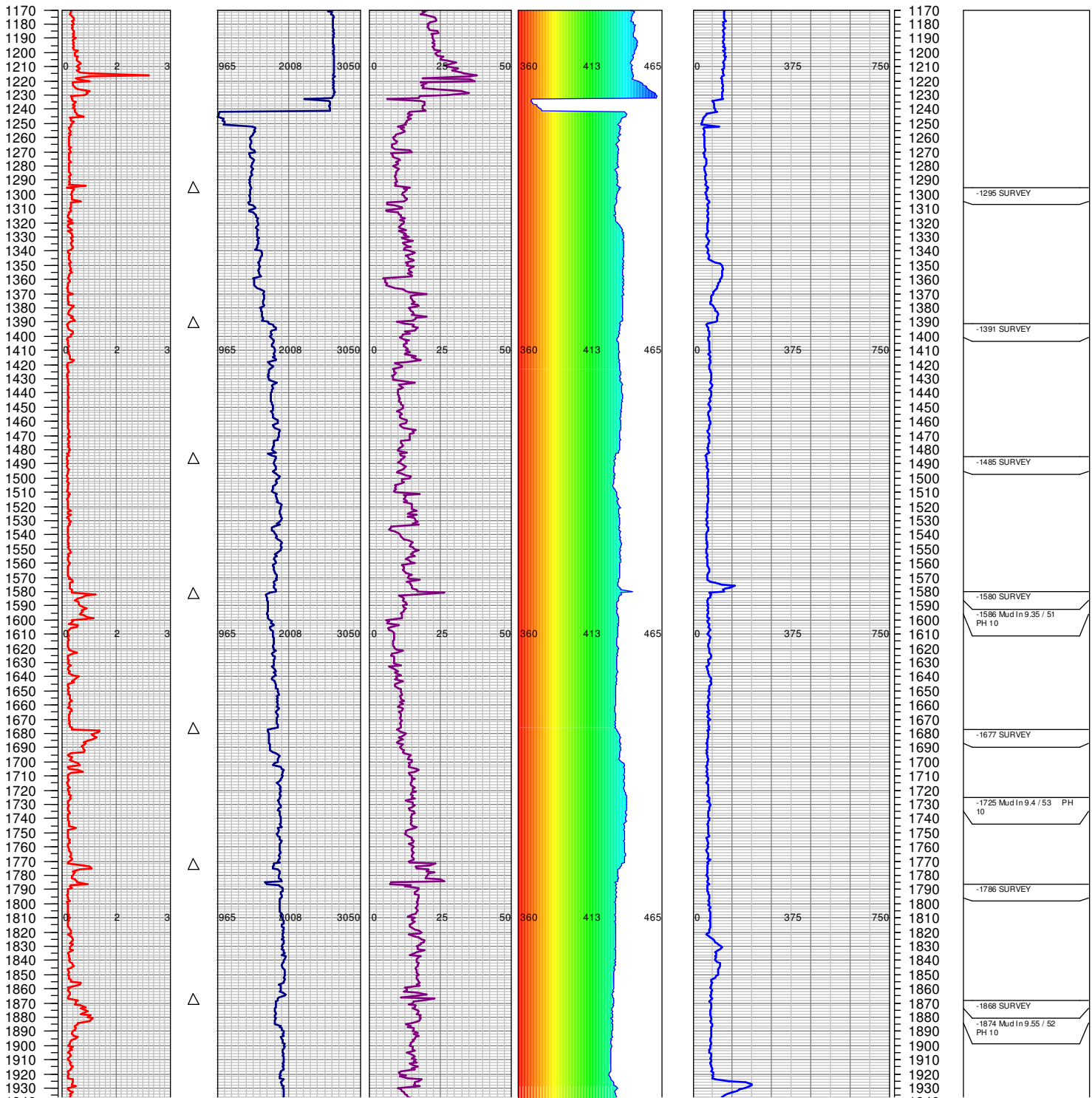
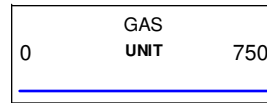
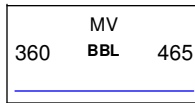
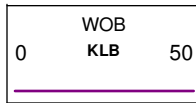
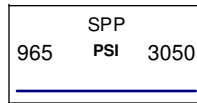
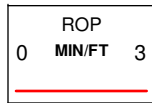
533 Bogart Lane, Unit A  
Grand Junction, CO 81505  
Office (970) 424-5162

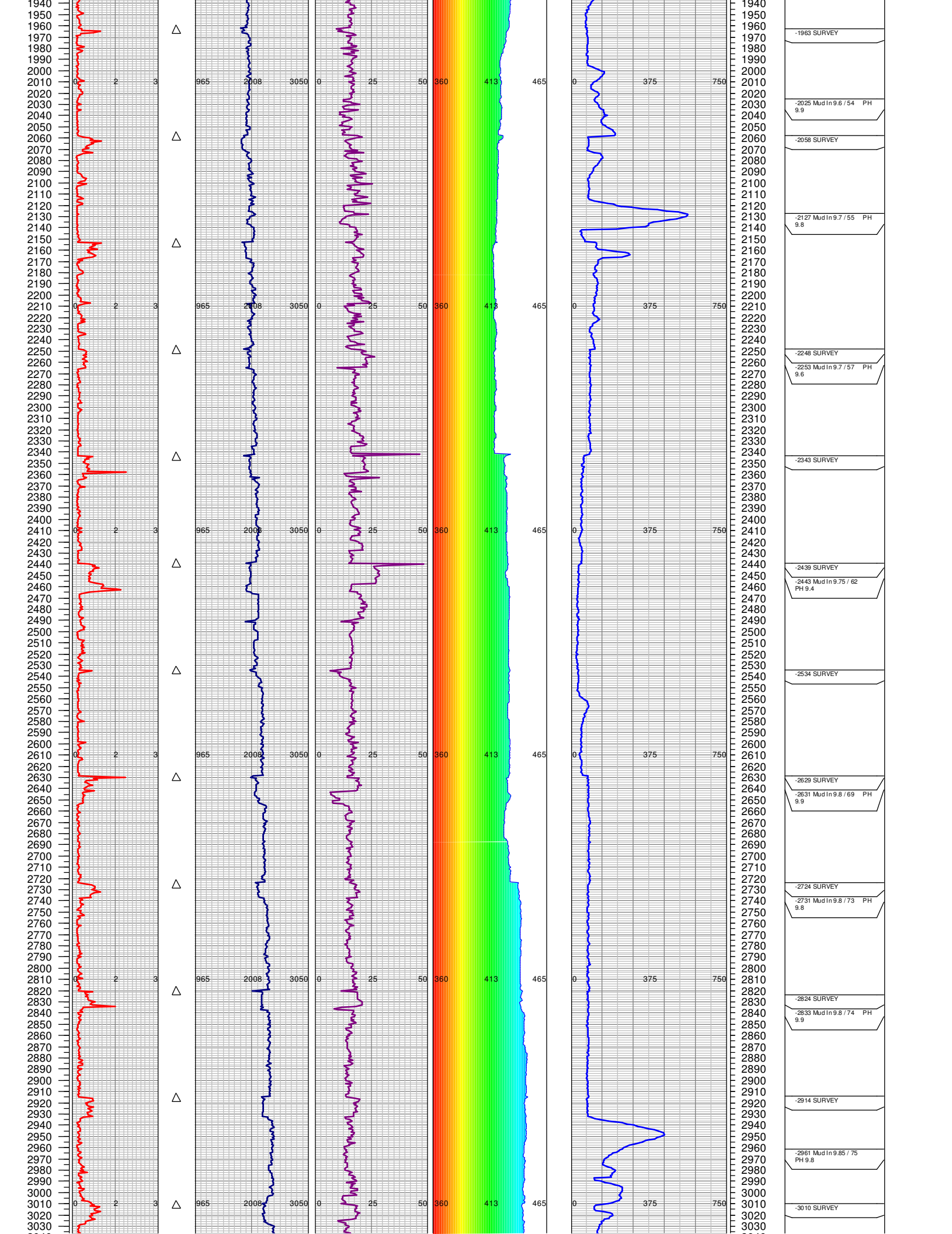
**PA 313-6**

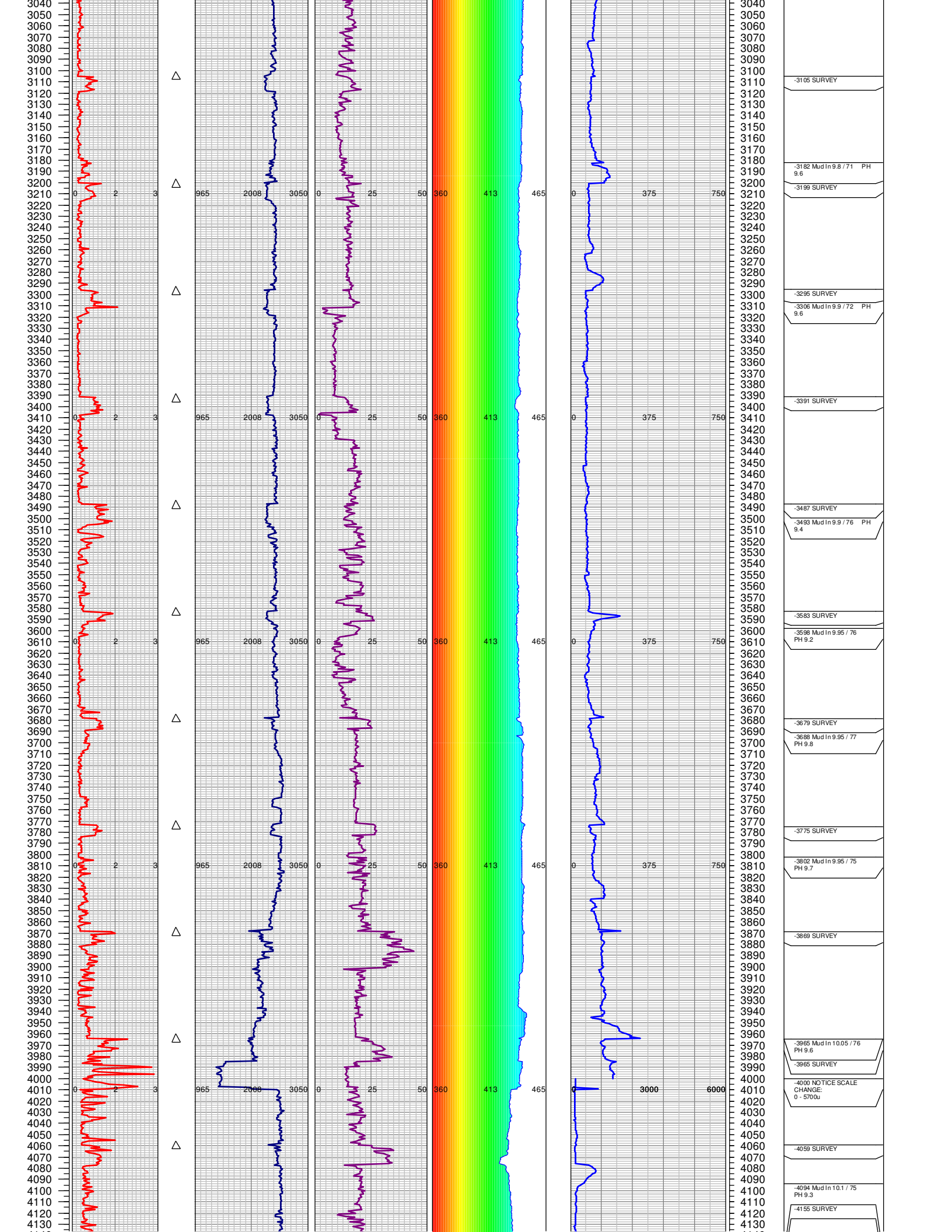
COUNTY: GARFIELD  
STATE: COLORADO  
DRILLING FLUID: LNSD  
LOGGER: COLIN JOHNSON

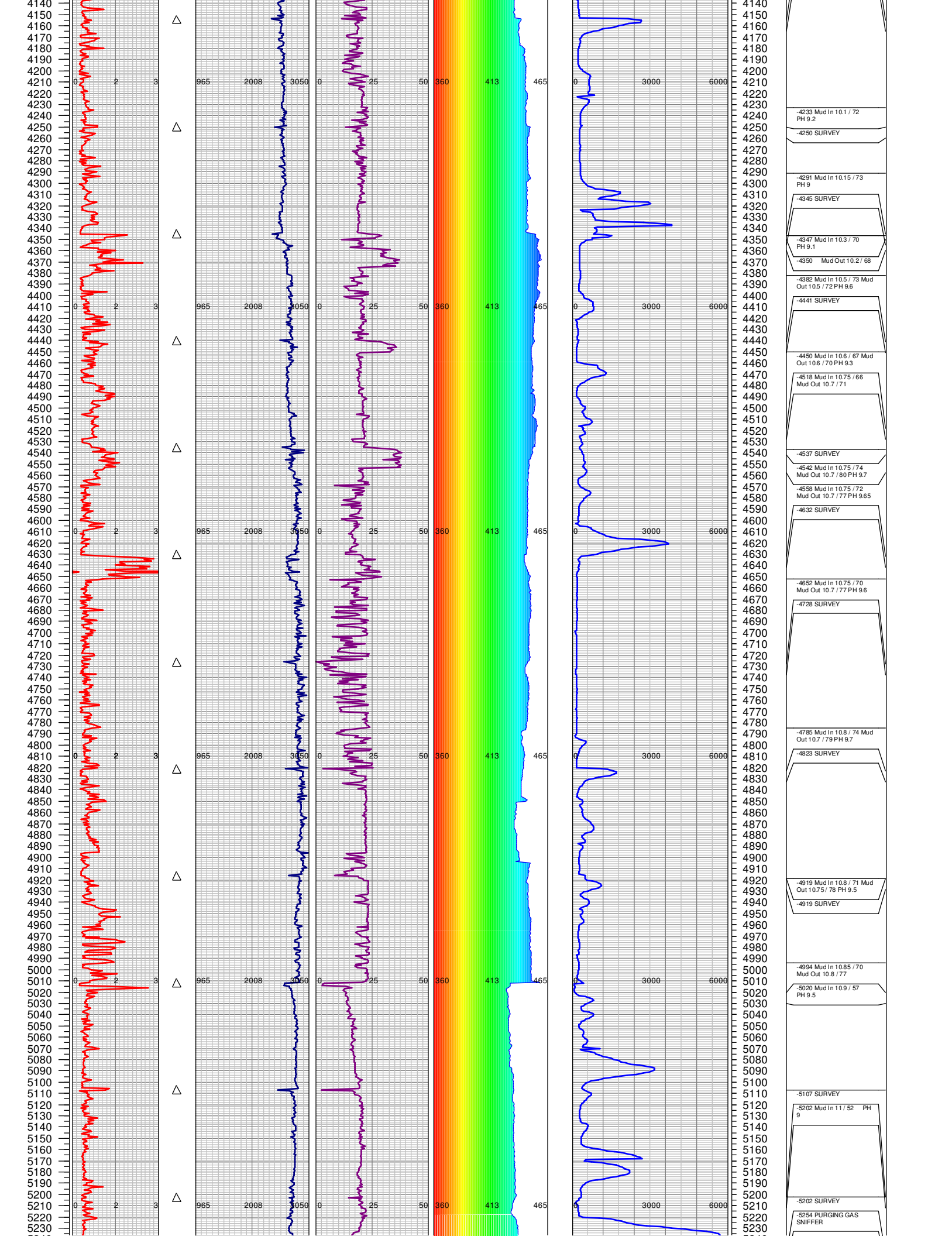
GROUND ELEVATION: 5153'  
KELLY BUSHING: 5179'  
TVD VS. MD = -315'  
DEPTHS LOGGED: 1170'-6898'

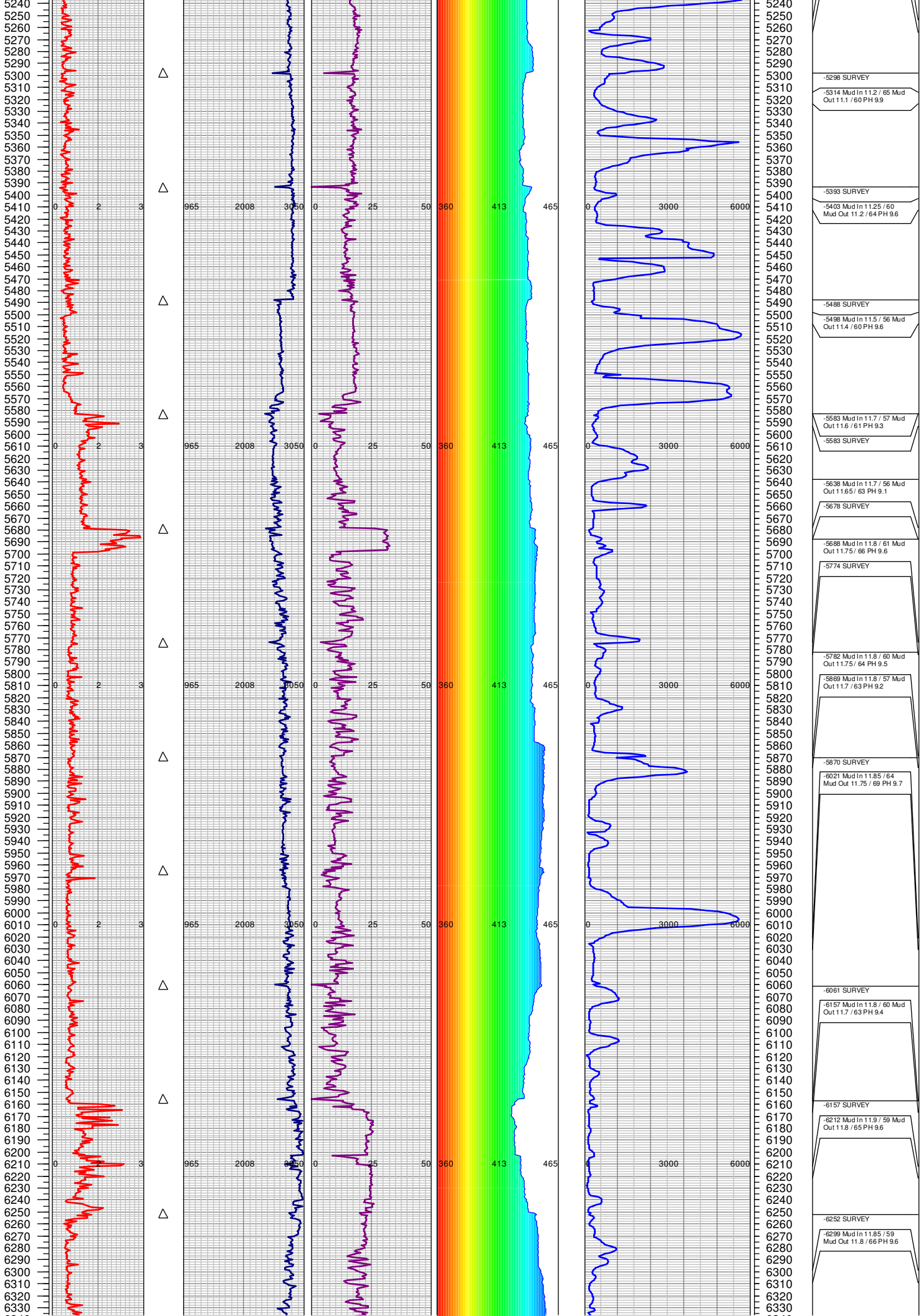
SPUD DATE: 05/12/2014  
FGS BEGIN LOGGING: 05/14/2014  
TD DATE: 05/17/2014  
DATES LOGGED: 05/14/2014-05/17/2014











-5298 SURVEY
-5314 Mud In 11.2 / 65 Mud Out 11.1 / 60 PH 9.9
-5393 SURVEY
-5403 Mud In 11.25 / 60 Mud Out 11.2 / 64 PH 9.6
-5488 SURVEY
-5498 Mud In 11.5 / 56 Mud Out 11.4 / 60 PH 9.6
-5583 Mud In 11.7 / 57 Mud Out 11.6 / 61 PH 9.3
-5583 SURVEY
-5638 Mud In 11.7 / 56 Mud Out 11.65 / 63 PH 9.1
-5678 SURVEY
-5688 Mud In 11.8 / 61 Mud Out 11.75 / 66 PH 9.6
-5774 SURVEY
-5782 Mud In 11.8 / 60 Mud Out 11.75 / 64 PH 9.5
-5869 Mud In 11.8 / 57 Mud Out 11.7 / 63 PH 9.2
-5870 SURVEY
-6021 Mud In 11.85 / 64 Mud Out 11.75 / 69 PH 9.7
-6061 SURVEY
-6157 Mud In 11.8 / 60 Mud Out 11.7 / 63 PH 9.4
-6157 SURVEY
-6212 Mud In 11.9 / 59 Mud Out 11.8 / 65 PH 9.6
-6252 SURVEY
-6299 Mud In 11.85 / 59 Mud Out 11.8 / 66 PH 9.6



