

WPX ENERGY ROCKY MOUNTAIN LLC-EBUS

PA 313-6

Nabors 574

Post Job Summary

Cement Surface Casing

Date Prepared: 05/21/2014

Job Date: 05/13/2014

Submitted by: Kory Hugentobler - Cement Engineer

The Road to Excellence Starts with Safety

Sold To #: 300721		Ship To #: 3207574		Quote #:		Sales Order #: 0901344268	
Customer: WPX ENERGY ROCKY MOUNTAIN LLC-EBUS				Customer Rep:			
Well Name: PA			Well #: 313-6			API/UWI #: 05-045-22225-00	
Field: PARACHUTE		City (SAP): PAR		County/Parish: GARFIELD		State: COLORADO	
Legal Description: 6-7S-95W-755FSL-738FWL							
Contractor: NABORS DRLG				Rig/Platform Name/Num: NABORS 574			
Job BOM: 7521							
Well Type: DIRECTIONAL GAS							
Sales Person: HALAMERICA\HB50180				Srvc Supervisor: Thomas Ponder			
Job							

Formation Name			
Formation Depth (MD)	Top		Bottom
Form Type	BHST		
Job depth MD	1205ft		Job Depth TVD
Water Depth			Wk Ht Above Floor 5ft
Perforation Depth (MD)	From		To

Well Data										
Description	New / Used	Size in	ID in	Weight lbm/ft	Thread	Grade	Top MD ft	Bottom MD ft	Top TVD ft	Bottom TVD ft
Open Hole Section			13.5				0	1205		0
Casing		9.625	9.001	32.3			0	1205		0

Tools and Accessories									
Type	Size in	Qty	Make	Depth ft		Type	Size in	Qty	Make
Guide Shoe	9.625	1		1205		Top Plug	9.625	1	HES
Float Shoe	9.625	1				Bottom Plug	9.625		HES
Float Collar	9.625	1		1159		SSR plug set	9.625		HES
Insert Float	9.625	1				Plug Container	9.625	1	HES
Stage Tool	9.625	1				Centralizers	9.625		HES

Miscellaneous Materials											
Gelling Agt		Conc		Surfactant		Conc		Acid Type		Qty	Conc
Treatment Fld		Conc		Inhibitor		Conc		Sand Type		Size	Qty

Fluid Data										
Stage/Plug #: 1										
Fluid #	Stage Type	Fluid Name	Qty	Qty UoM	Mixing Density lbm/gal	Yield ft3/sack	Mix Fluid Gal	Rate bbl/min	Total Mix Fluid Gal	
1	Fresh Water Spacer	Fresh Water Spacer	20	bbl	8.34			4		
Fluid #	Stage Type	Fluid Name	Qty	Qty UoM	Mixing Density lbm/gal	Yield ft3/sack	Mix Fluid Gal	Rate bbl/min	Total Mix Fluid Gal	
2	Lead Cement	VARICEM (TM) CEMENT	160	sack	12.3	2.38		8	13.77	

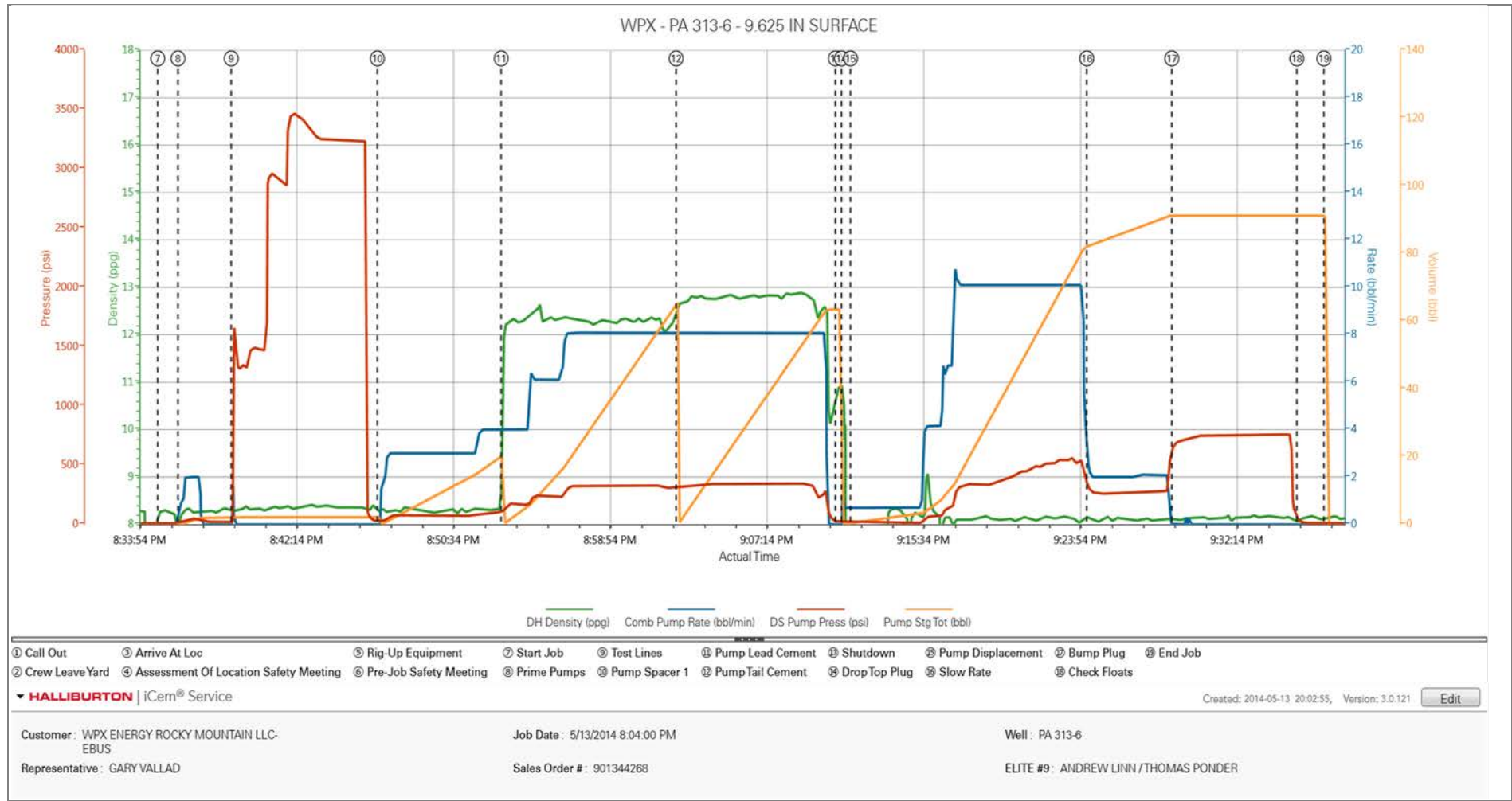
13.70 Gal		FRESH WATER							
Fluid #	Stage Type	Fluid Name	Qty	Qty UoM	Mixing Density lbm/gal	Yield ft3/sack	Mix Fluid Gal	Rate bbl/min	Total Mix Fluid Gal
3	Tail Cement	VARICEM (TM) CEMENT	165	sack	12.8	2.11		8	11.77
11.71 Gal		FRESH WATER							
Fluid #	Stage Type	Fluid Name	Qty	Qty UoM	Mixing Density lbm/gal	Yield ft3/sack	Mix Fluid Gal	Rate bbl/min	Total Mix Fluid Gal
4	Fresh Water Spacer	Fresh Water Spacer	91.2	bbl	8.34			10	
Cement Left In Pipe		Amount	46 ft		Reason		Shoe Joint		
Comment									

1.1 Job Event Log

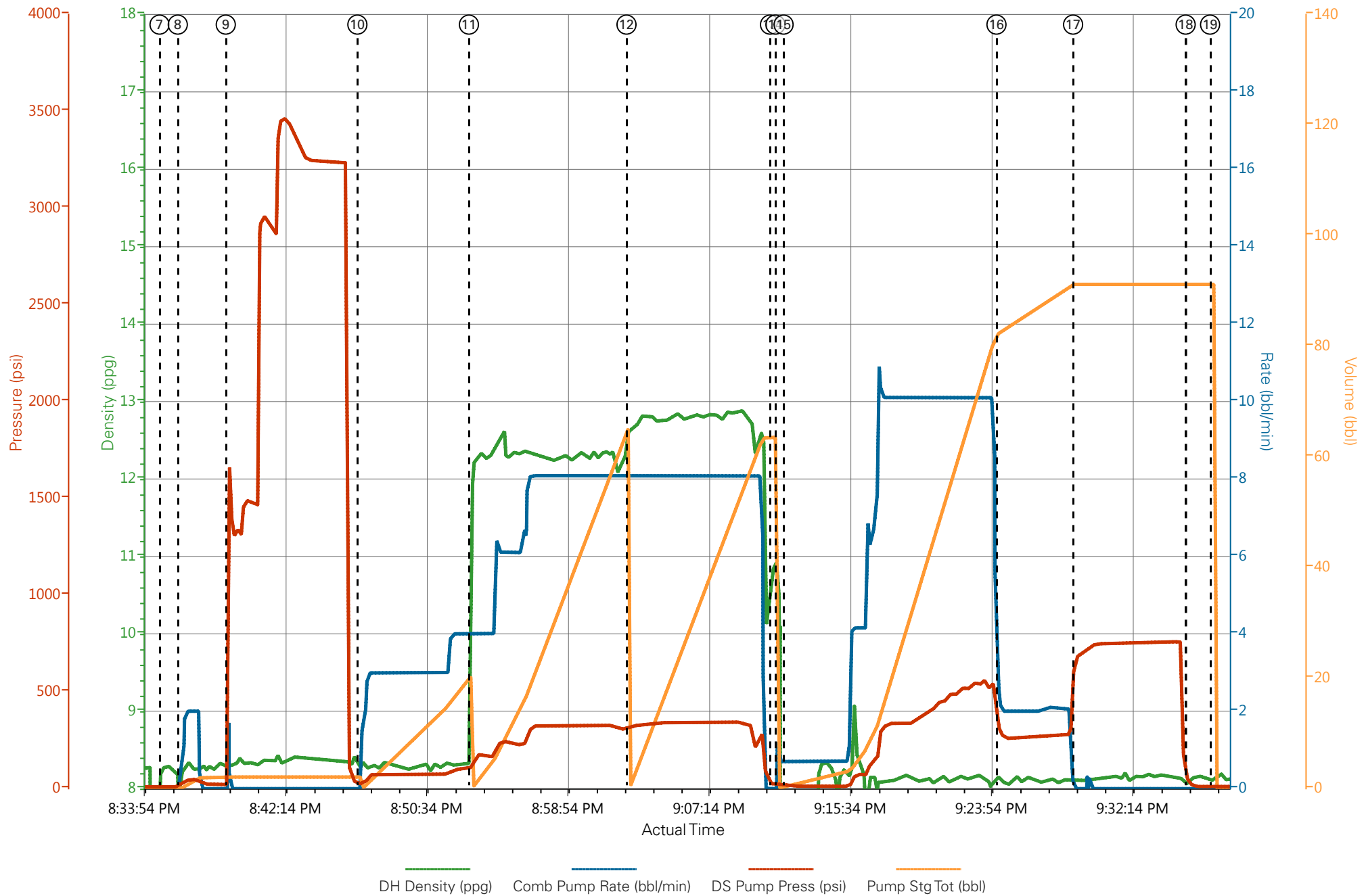
Type	Seq No.	Graph Label/Activity	Date	Time	Source	DH Density (ppg)	Comb Pump Rate (bbl/min)	Pump Stg Tot (bbl)	Driv-Side Pump Pressure (psi)	Comment
Event	1	Call Out	5/13/2014	12:30:00	USER					ON LOCATION TIME @ 1800
Event	2	Crew Leave Yard	5/13/2014	15:00:00	USER					ALL HES PRESENT FOR PRE-CONVOY SAFETY MEETING
Event	3	Arrive At Loc	5/13/2014	16:00:00	USER					RIG WAS STILL RUNNING CASING WHEN THE CREW ARRIVED ON LOCATION
Event	4	Assessment Of Location Safety Meeting	5/13/2014	19:00:00	USER					TD- 1205', TP- 1205', SJ- 46', MUD- 9.8 PPG, HOLE- 13 1/2", SURFACE CASING- 9 5/8" 32.3# H-40
Event	5	Rig-Up Equipment	5/13/2014	19:30:00	USER					1-550 PICKUP, 1-ELITE PUMP, 1-660 CUFT BULK TRUCK
Event	6	Pre-Job Safety Meeting	5/13/2014	20:15:00	USER					ALL HES PRESENT, RIG CREW PRESENT, RIG TD CASING @ 1930
Event	7	Start Job	5/13/2014	20:34:58	COM6					
Event	8	Prime Pumps	5/13/2014	20:36:02	COM6	8.33	2	53	2	FILL LINES
Event	9	Test Lines	5/13/2014	20:38:52	COM6	8.33	.1	3474	.1	GOOD PRESSURE TEST NO LEAKS IN THE LINES
Event	10	Pump Spacer 1	5/13/2014	20:46:38	COM6	8.33	4	116	20	FRESH WATER
Event	11	Pump Lead Cement	5/13/2014	20:53:13	COM6	12.3	8	334	67.8	160 SKS 12.3 PPG 2.38 FT3/SK 13.77 GAL/SK
Event	12	Pump Tail Cement	5/13/2014	21:02:31	COM6	12.8	8	345	62	165 SKS 12.8 PPG 2.11 FT3/SK 11.77 GAL/SK
Event	13	Shutdown	5/13/2014	21:11:00	USER					
Event	14	Drop Top Plug	5/13/2014	21:11:19	COM6					PLUG DROP VERIFIED VIA TATTLE TELL BY CO REP
Event	15	Pump Displacement	5/13/2014	21:11:48	COM6	8.33	10	555	81.2	FRESH WATER, WASHED UP ON TOP OF THE PLUG WITH THE FIRST 10 BBL OF DISPLACEMENT OUT OF THE MIXING TUB
Event	16	Slow Rate	5/13/2014	21:24:21	USER	8.33	2	280	10	GOOD RETURNS, CIRCULATED 30 BBL OF CEMENT TO SURFACE
Event	17	Bump Plug	5/13/2014	21:28:53	USER	8.33	2	290	91.2	PLUG BUMPED
Event	18	Check Floats	5/13/2014	21:35:31	USER			760	91.2	FLOATS HELD, 3/4 BBL BACK TO THE DISPLACEMENT TANKS
Event	19	End Job	5/13/2014	21:36:58	COM6					THANK YOU FOR CHOOSING HALLIBURTON, THOMAS PONDER AND CREW

2.0 Attachments

2.1 CHART EVENTS.png



WPX - PA 313-6 - 9.625 IN SURFACE



HALLIBURTON

Company:	<u>WPX</u>	Date:	<u>5/13/2014</u>
Submitted by:	<u>THOMAS PONDER</u>	Date Rec.:	<u>5/13/2014</u>
Attention:	<u>LARRY COOKSEY</u>	S.O.#	<u>901344268</u>
Lease	<u>PA</u>	Job Type:	<u>SURFACE</u>
Well #	<u>313-6</u>		

Specific Gravity	<i>MAX</i>	<i>1</i>
pH	<i>8</i>	<i>7.2</i>
Potassium (K)	<i>5000</i>	<i>0</i> Mg / L
Calcium (Ca)	<i>500</i>	<i>0</i> Mg / L
Iron (FE2)	<i>300</i>	<i>0</i> Mg / L
Chlorides (Cl)	<i>3000</i>	<i>0</i> Mg / L
Sulfates (SO ₄)	<i>1500</i>	<i><200</i> Mg / L
Carbonates hardness		
Temp	<i>40-80</i>	<i>42</i> Deg
Total Dissolved Solids		<i>225</i> Mg / L

Respectfully: THOMAS PONDER

Title: CEMENTING SUPERVISOR

Location: GRAND JCT, CO

Sales Order #: 0901344268	Line Item: 10	Survey Conducted Date: 5/13/2014
Customer: WPX ENERGY ROCKY MOUNTAIN LLC-EBUS		Job Type (BOM): CMT SURFACE CASING BOM
Customer Representative: GARY VALLAD		API / UWI: (leave blank if unknown) 05-045-22225-00
Well Name: PA		Well Number: 0080244835
Well Type: DIRECTIONAL GAS	Well Country: USA	
H2S Present: No	Well State: COLORADO	Well County: GARFIELD

Dear Customer,

We hope that you were satisfied with the service quality of this job performed by Halliburton. It is the aim of our management and service personnel to deliver equipment and service of a standard unmatched in the service sector of the energy industry.

Please take the time to let us know if our performance met with your satisfaction. Please be as critical as possible to ensure we constantly improve our service. Your comments are of great value to us and are intended for the exclusive use of Halliburton.

CUSTOMER SATISFACTION SURVEY

CATEGORY	CUSTOMER SATISFACTION RESPONSE	
Survey Conducted Date	The date the survey was conducted	5/13/2014
Survey Interviewer	The survey interviewer is the person who initiated the survey.	HX41187
Customer Participation	Did the customer participate in this survey? (Y/N)	Yes
Customer Representative	Enter the Customer representative name	GARY VALLAD
HSE	Was our HSE performance satisfactory? Circle Y or N	Yes
Equipment	Were you satisfied with our Equipment? Circle Y or N	Yes
Personnel	Were you satisfied with our people? Circle Y or N	Yes
Customer Comment	Customer's Comment	GOOD JOB

CUSTOMER SIGNATURE

Sales Order #: 0901344268	Line Item: 10	Survey Conducted Date: 5/13/2014
Customer: WPX ENERGY ROCKY MOUNTAIN LLC-EBUS		Job Type (BOM): CMT SURFACE CASING BOM
Customer Representative: GARY VALLAD		API / UWI: (leave blank if unknown) 05-045-22225-00
Well Name: PA		Well Number: 0080244835
Well Type: DIRECTIONAL GAS	Well Country: USA	
H2S Present: No	Well State: COLORADO	Well County: GARFIELD

KEY PERFORMANCE INDICATORS

General	
Survey Conducted Date The date the survey was conducted	5/13/2014

Cementing KPI Survey	
Type of Job Select the type of job. (Cementing or Non-Cementing)	0
Select the Maximum Deviation range for this Job What is the highest deviation for the job you just completed? This may not be the maximum well deviation.	Vertical
Total Operating Time (hours) Total Operating Hours Including Rig-up, Pumping, Rig-down. Enter in decimal format.	2
HSE Incident, Accident, Injury HSE Incident, Accident, Injury. This should be recordable incidents only.	No
Was the job purpose achieved? Was the job delivered correctly as per customer agreed design?	Yes
Operating Hours (Pumping Hours) Total number of hours pumping fluid on this job. Enter in decimal format.	1
Customer Non-Productive Rig Time (hrs) Lost time due to Halliburton in the start, execution, or completion of an ordered service or product, or delays in a follow-on service. Enter in decimal format. 0 if none.	0
Type of Rig Classification Job Was Performed Type Of Rig (classification) Job Was Performed On	Drilling Rig (Portable)
Number Of JSAs Performed Number Of Jsas Performed	6
Number of Unplanned Shutdowns Unplanned shutdown is when injection stops for any period of time.	0
Was this a Primary Cement Job (Yes / No)	Yes

Sales Order #: 0901344268	Line Item: 10	Survey Conducted Date: 5/13/2014
Customer: WPX ENERGY ROCKY MOUNTAIN LLC-EBUS		Job Type (BOM): CMT SURFACE CASING BOM
Customer Representative: GARY VALLAD		API / UWI: (leave blank if unknown) 05-045-22225-00
Well Name: PA		Well Number: 0080244835
Well Type: DIRECTIONAL GAS	Well Country: USA	
H2S Present: No	Well State: COLORADO	Well County: GARFIELD

Primary Cement Job= Casing job, Liner job, or Tie-back job.	
Did We Run Wiper Plugs? Did We Run Top And Bottom Casing Wiper Plugs?	Top
Mixing Density of Job Stayed in Designed Density Range (0-100%) Density Range defined as +/- .20 ppg. Calculation: Total BBLs cement mixed at designed density divided by total BBLs of cement multiplied by 100	95
Was Automated Density Control Used? Was Automated Density Control (ADC) Used ?	Yes
Pump Rate (percent) of Job Stayed At Designed Pump Rate Pump Rate range defined as +/- 1bbl/min. Calculation: Total BBLs of fluid pumped at the designed rate divided by Total BBLs of fluid pumped, multiplied by 100	99
Nbr of Remedial Sqz Jobs Rqd - Competition Number Of Remedial Squeeze Jobs Required After Primary Job Performed By Competition	0
Nbr of Remedial Plug Jobs Rqd - HES Number Of Remedial Plug Jobs Needed After Primary Plug Pumped By HES	0
Nbr of Remedial Sqz Jobs Rqd - HES Number Of Remedial Squeeze Jobs Required After Primary Job Performed By HES	0