

# HALLIBURTON

iCem<sup>®</sup> Service

**SAMSON RESOURCES CORP - EBUS**

**For: JOSH JOHNSON**

Date: Friday, May 23, 2014

**COLORADO 32-7 # 10-3**

COLORADO  
SAMSON SURFACE

Sincerely,  
**CHRIS KUKUS**

**HALLIBURTON****Cementing Job Summary***The Road to Excellence Starts with Safety*

Sold To #: 345114		Ship To #: 0003168748		Quote #: 0021861025		Sales Order #: 0901369606				
Customer: SAMSON RESOURCES CORP - EBUS				Customer Rep: JOSH JOHNSON						
Well Name: COLORADO 32-7		Well #: 10-3		API/UWI #: 05-067-09878-00						
Field: IGNACIO BLANCO		City (SAP): IGN		County/Parish: LA PLATA		State: COLORADO				
Legal Description: NE NW-4-32N-7W-923FNL-1351FWL										
Contractor:				Rig/Platform Name/Num: AWS 507						
Job BOM: 7521										
Well Type: COAL DE-GAS										
Sales Person: HALAMERICA\HX41066				Srv Supervisor: Christopher Kukus						
<b>Job</b>										
Formation Name										
Formation Depth (MD)		Top		Bottom						
Form Type				BHST						
Job depth MD		362ft		Job Depth TVD						
Water Depth				Wk Ht Above Floor						
Perforation Depth (MD)		From		To						
<b>Well Data</b>										
Description	New / Used	Size in	ID in	Weight lbm/ft	Thread	Grade	Top MD ft	Bottom MD ft	Top TVD ft	Bottom TVD ft
Casing	0	8.625	8.097	24	8 RD	J-55	0	351		0
Open Hole Section			12.25				0	362		0
<b>Tools and Accessories</b>										
Type	Size in	Qty	Make	Depth ft		Type	Size in	Qty	Make	
Guide Shoe	8.625	1		351		Top Plug	8.625	1	HES	
Float Shoe	8.625					Bottom Plug	8.625		HES	
Float Collar	8.625	1		309		SSR plug set	8.625		HES	
Insert Float	8.625					Plug Container	8.625	1	HES	
Stage Tool	8.625					Centralizers	8.625	10	HES	
<b>Miscellaneous Materials</b>										
Gelling Agt		Conc		Surfactant		Conc	Acid Type		Qty	Conc
Treatment Fld		Conc		Inhibitor		Conc	Sand Type		Size	Qty
<b>Fluid Data</b>										
Stage/Plug #: 1										
Fluid #	Stage Type	Fluid Name	Qty	Qty UoM	Mixing Density lbm/gal	Yield ft3/sack	Mix Fluid Gal	Rate bbl/min	Total Mix Fluid Gal	
1	Fresh Water	Fresh Water	20	bbl	8.34			3		
<b>Fluid Data</b>										
Fluid #	Stage Type	Fluid Name	Qty	Qty UoM	Mixing Density lbm/gal	Yield ft3/sack	Mix Fluid Gal	Rate bbl/min	Total Mix Fluid Gal	
2	HalCem	HALCEM (TM) SYSTEM	265	sack	15.8	1.18		3	5.25	
0.1250 lbm		POLY-E-FLAKE (101216940)								

**HALLIBURTON*****Cementing Job Summary***

2 %		CALCIUM CHLORIDE, PELLET, 50 LB (101509387)							
Fluid #	Stage Type	Fluid Name	Qty	Qty UoM	Mixing Density lbm/gal	Yield ft <sup>3</sup> /sack	Mix Fluid Gal	Rate bbl/min	Total Mix Fluid Gal
3	Displacement Fluid	Displacement Fluid	19.7	bbl	8.4			3	
Cement Left In Pipe		Amount	42 ft	Reason		Shoe Joint			
Comment									

HALLIBURTON



## Summary Report

Crew: \_\_\_\_\_

Job Start Date: 5/23/2014

Sales Order #: 0901369606

WO #: 0901369606

PO/AFE #: NA

Customer: SAMSON RESOURCES CORP -  
EBUS  
UWI / API Number: 05-067-09878-00  
Well Name: COLORADO 32-7  
Well No: 10-3

Field: IGNACIO BLANCO  
County/Parish: LA PLATA  
State: COLORADO  
Latitude: 37.050760  
Longitude: -107.618470  
Sect / Twn / Rng: 4/32/7

Job Type: CMT SURFACE  
CASING BOM  
Service Supervisor: Christopher Kukus

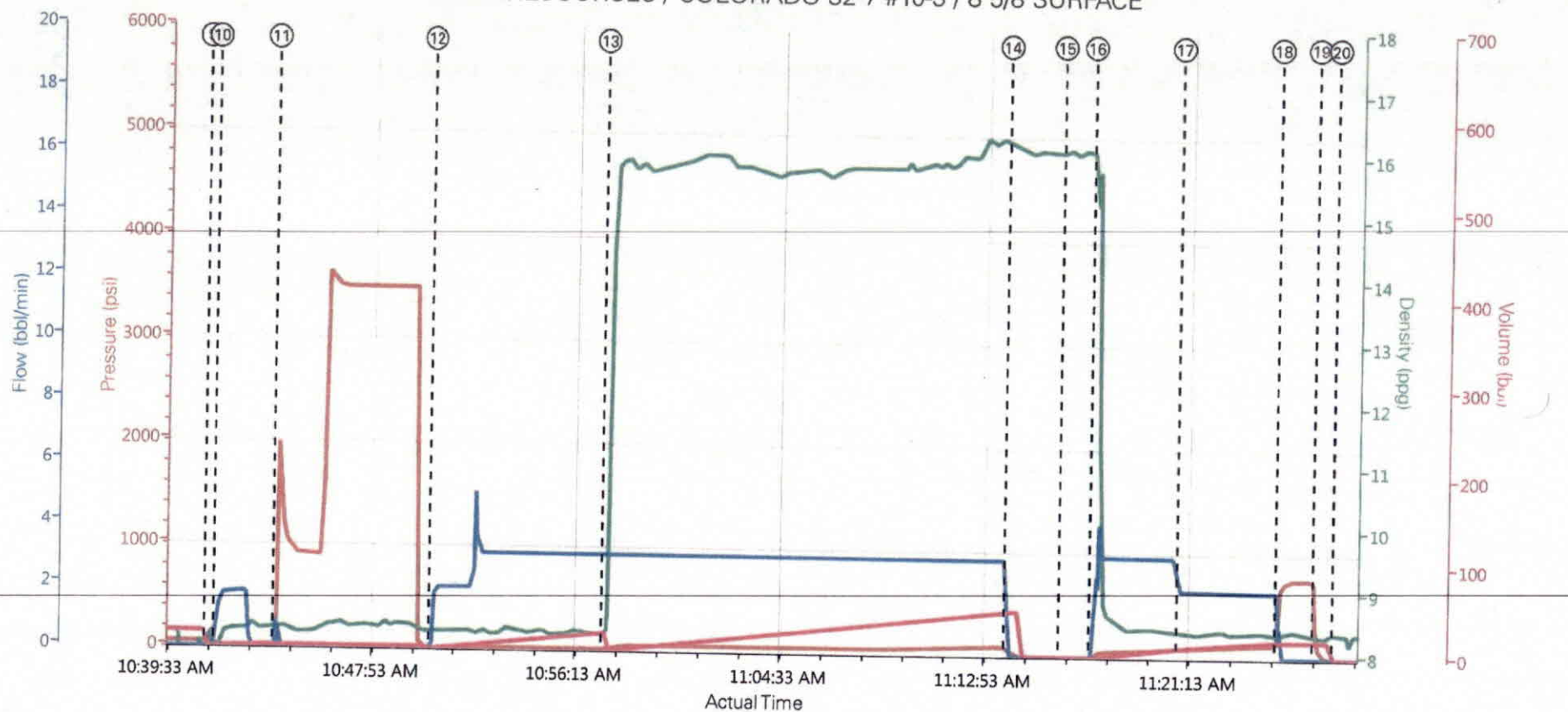
Cust Rep Name: JOSH JOHNSON  
Cust Rep Phone #:

Remarks:

The Information Stated Herein Is Correct	Customer Representative Signature	Date
	Customer Representative Printed Name	



# SAMSON RESOURCES / COLORADO 32-7 #10-3 / 8 5/8 SURFACE



PS Pump Press (psi) DH Density (ppg) Comb Pump Rate (bbl/min) Pump Stg Tot (bbl)

① Call Out n/a;n/a;n/a;n/a	⑩ Prime Lines 15;1.38;1;0.1	⑲ Check Floats 139;8.36;0;19.4
② Pre-Convoy Safety Meeting n/a;n/a;n/a;n/a	⑪ Test Lines 23;8.32;0;2.4	20 End Job -7;8.44;0;0
③ Crew Leave Yard n/a;n/a;n/a;n/a	⑫ Pump Spacer 1 -6;8.26;1;0	21 Post-Job Safety Meeting (Pre Rig-Down) n/a;n/a;n/a;n/a
④ Arrive at Location n/a;n/a;n/a;n/a	⑬ Pump Cement 18;8.3;3.1;0.05	22 Pre-Rig Down Safety Meeting n/a;n/a;n/a;n/a
⑤ Assessment Of Location Safety Meeting n/a;n/a;n/a;n/a	⑭ Shutdown 46;16.24;0;50.7	23 Rig-Down Equipment n/a;n/a;n/a;n/a
⑥ Pre-Rig Up Safety Meeting n/a;n/a;n/a;n/a	⑮ Drop Top Plug 0;16.14;0;0	24 Pre-Convoy Safety Meeting n/a;n/a;n/a;n/a
⑦ Rig-Up Equipment n/a;n/a;n/a;n/a	⑯ Pump Displacement 0;16.14;0;0	25 Crew Leave Location n/a;n/a;n/a;n/a
⑧ Pre-Job Safety Meeting 48;0.11;0;0	⑰ Slow Rate 85;8.42;2.2;11.1	
⑨ Start Job 49;8.1;0;0	⑱ Bump Plug 617;8.39;1;19.4	

▼ HALLIBURTON | iCem® Service

Created: 2014-05-23 09:03:35, Version: 3.0.148

Edit

Customer: SAMSON RESOURCES CORP - EBUS  
Representative: CHRIS KUKUS

Job Date: 5/23/2014 9:06:04 AM  
Sales Order #: 901369606

Well: COLORADO 32-7 # 10-3  
REDTIGER 11223557: JERRY ETCITY