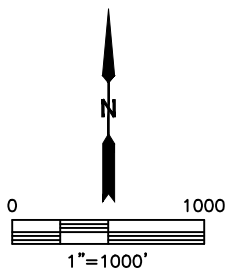
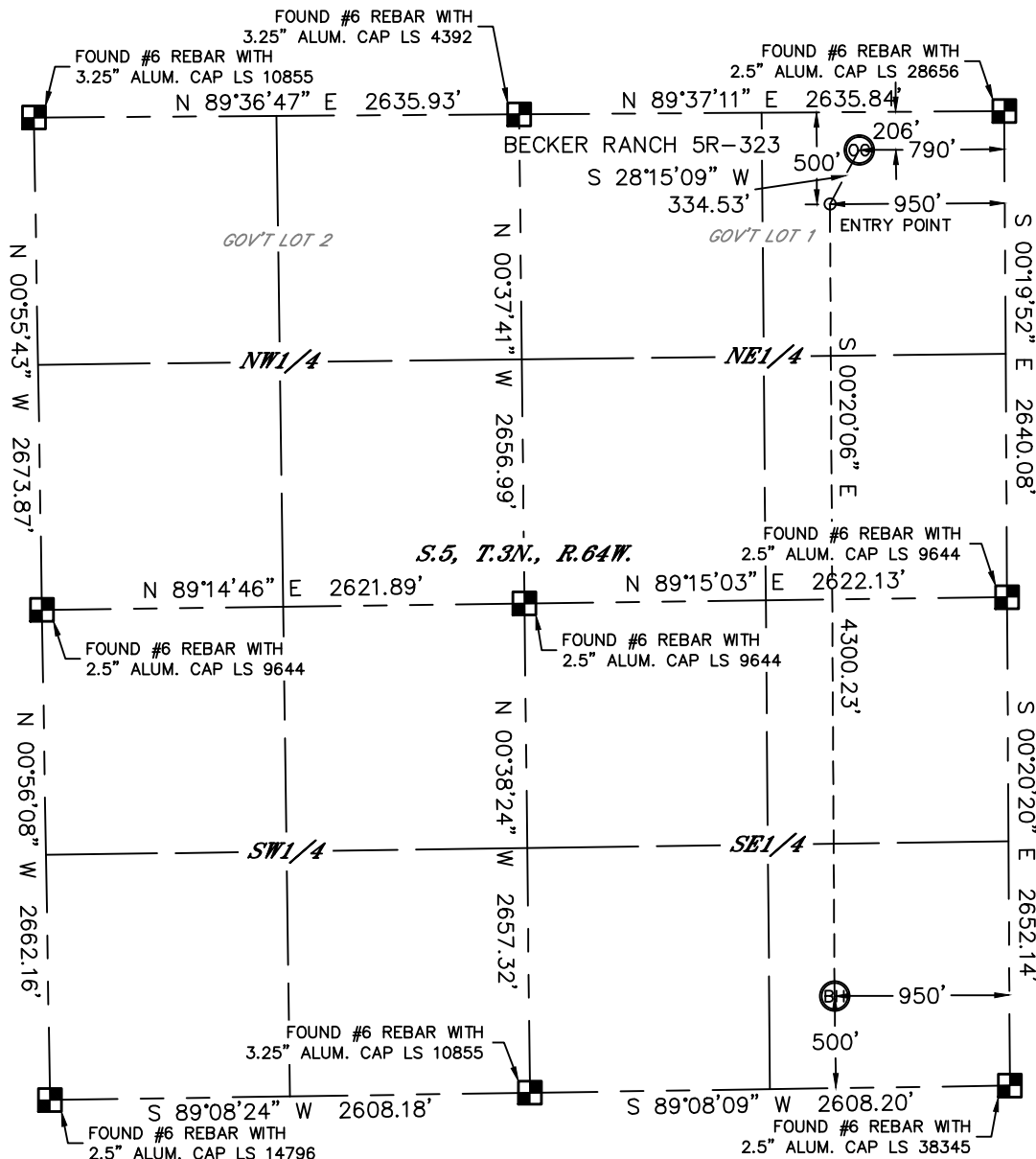


WELL LOCATION CERTIFICATE

THIS MAP DOES NOT REPRESENT A BOUNDARY SURVEY



SECTION: 5
TOWNSHIP: 3N
RANGE: 64W



In accordance with a request from Mac Neumann with PDC ENERGY Lat40', Inc. has determined the surface location of the BECKER RANCH 5R-323 to be 206' from the NORTH line and 790' from the EAST line and the bottom hole to be 500' from the SOUTH line and 950' from the EAST line as measured at right angles from the section lines of Section 5, Township 3 North, Range 64 West of the Sixth Principal Meridian, County of Weld, State of Colorado.

I hereby state that this Well Location Certificate was prepared by me, or under my direct supervision, that the fieldwork was completed on 4/22/2014, for and on behalf of PDC ENERGY. That this is not a Land Survey Plat or an Improvement Survey Plat, and that it is not to be relied upon for establishment of fence, building, or other future improvement lines.

NOTE:

- 1) Bearings shown are Grid Bearings of the Colorado State Plane Coordinate System, North Zone, North American Datum 1983/2007. The lineal dimensions as contained herein are based upon the "U.S. Survey Foot."
- 2) Ground elevations are based on an observed GPS elevation (NAVD 1988 DATUM).
- 3) IMPROVEMENTS: See LOCATION DRAWING for all visible improvements within 500' of disturbed area.
- 4) SURFACE USE: RANGELAND
- 5) INSTRUMENT OPERATOR: ADAM KELLY
- 6) NEAREST CULTURAL ITEMS:
BUILDING: 1120' NW
BUILDING UNIT: ±1758' NE
HIGH OCCUPANCY BUILDING UNIT: 5280'+
DESIGNATED OUTSIDE ACTIVITY AREA: 5280'+
PUBLIC ROAD: 783' E (CR 53)
ABOVE GROUND UTILITY: 1037' NW
RAILROAD: 5280'+
PROPERTY LINE: 206' N
- LEGEND
-  = ALIQUOT MONUMENT
-  = CALCULATED POSITION

SURFACE LOCATION

LAT: 40.26118°N
LONG: 104.56819°W
PDOP: 2.0
ELEV: 4783'
1/4.1/4: NENE


BOTTOM HOLE

LAT: 40.24857°N
LONG: 104.56884°W

ENTRY POINT

LAT: 40.26038°N
LONG: 104.56877°W

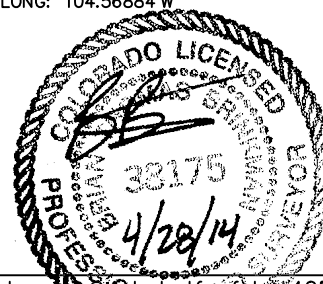
LEGEND

- = ALIQUOT MONUMENT AS DESCRIBED
 = CALCULATED POSITION

Brian T. Brinkman, On behalf of Lot40, Inc.

Colorado Licensed Professional
Land Surveyor No. 38175

DATE: 4/28/2014
PROJECT#: 2013107



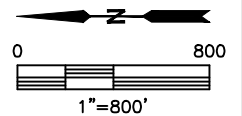
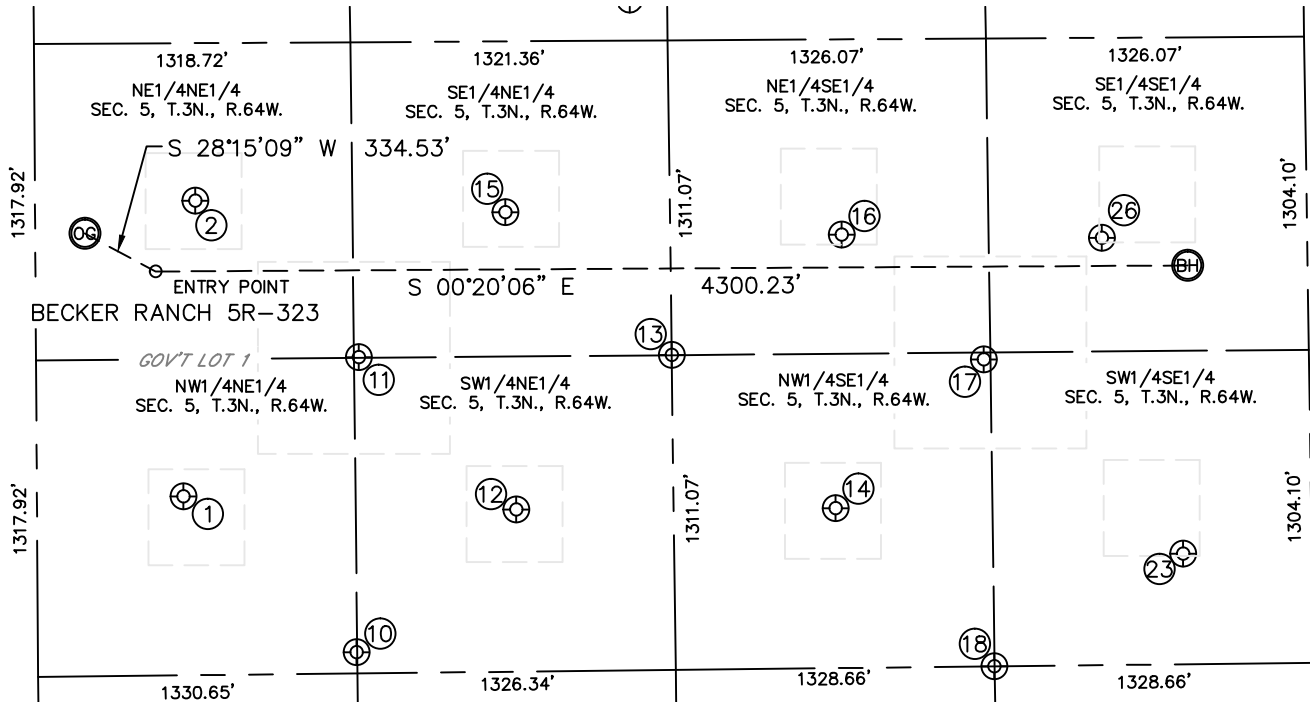


Lat40°, Inc. 1635 Foxtrail Drive, Suite 325 Loveland, CO 970-776-3321

SITE SKETCH

BECKER RANCH 5R-323

SECTION: 5
TOWNSHIP: 3N
RANGE: 64W



WELL NO.	WELL NAME	SHL FOOTAGE				SHL LAT°	SHL LONG°	PDOP	ELEV (FT.)	1/4/1/4
1	BECKER 5-6	611	FNL	1887	FEL	40.26008	-104.57213	2.5	4788	NWNE
2	BECKER 5-10	668	FNL	656	FEL	40.25991	-104.56772	2.5	4777	NENE
10	BECKER 6-11 I	1327	FNL	2540	FEL	40.25812	-104.57448	1.6	4788	NWNE
11	BECKER 8	1345	FNL	1312	FEL	40.25806	-104.57008	1.6	4781	SENE
12	BECKER 6-12	1996	FNL	1950	FEL	40.25628	-104.57238	1.7	4771	SWNE
13	BECKER 12-10I	2655	FSL	1311	FEL	40.25448	-104.57010	1.8	4751	NESE
14	BECKER 5-1	1982	FSL	1952	FEL	40.25263	-104.57241	1.9	4768	NWSE
15	BECKER 5-4	1959	FNL	712	FEL	40.25637	-104.56794	2.0	4772	SENE
16	BECKER 5-16	1939	FSL	813	FEL	40.25253	-104.56833	1.9	4741	NESE
17	BECKER 6	1356	FSL	1337	FEL	40.25092	-104.57022	1.3	4744	NWSE
18	BECKER 15-9I	1330	FSL	2615	FEL	40.25083	-104.57479	1.8	4752	NWSE
23	BECKER 5-15	537	FSL	2151	FEL	40.24866	-104.57314	1.6	4734	SWSE
26	BECKER 5-5	856	FSL	833	FWL	40.24955	-104.56842	2.1	4726	SESE

DATE: 4/28/2014
PROJECT#: 2013107