

GRAPHIC SCALE



► INDICATES PROPOSED MONITORING WELL LOCATIONS



PROJECT LOCATION MAP & DRAINAGE BASIN PLAN PROPOSED P32 WATER IMPOUNDMENT FACILITY

SITUATED IN SE1/4 SE1/4, SECTION 32, T. 5 S., R. 95 W. 6th PM.
GARFIELD COUNTY COLORADO



CONSTRUCTION SURVEYS, INC.
607 SUNRISE BLVD.
SILT, CO 81652
970-876-5753

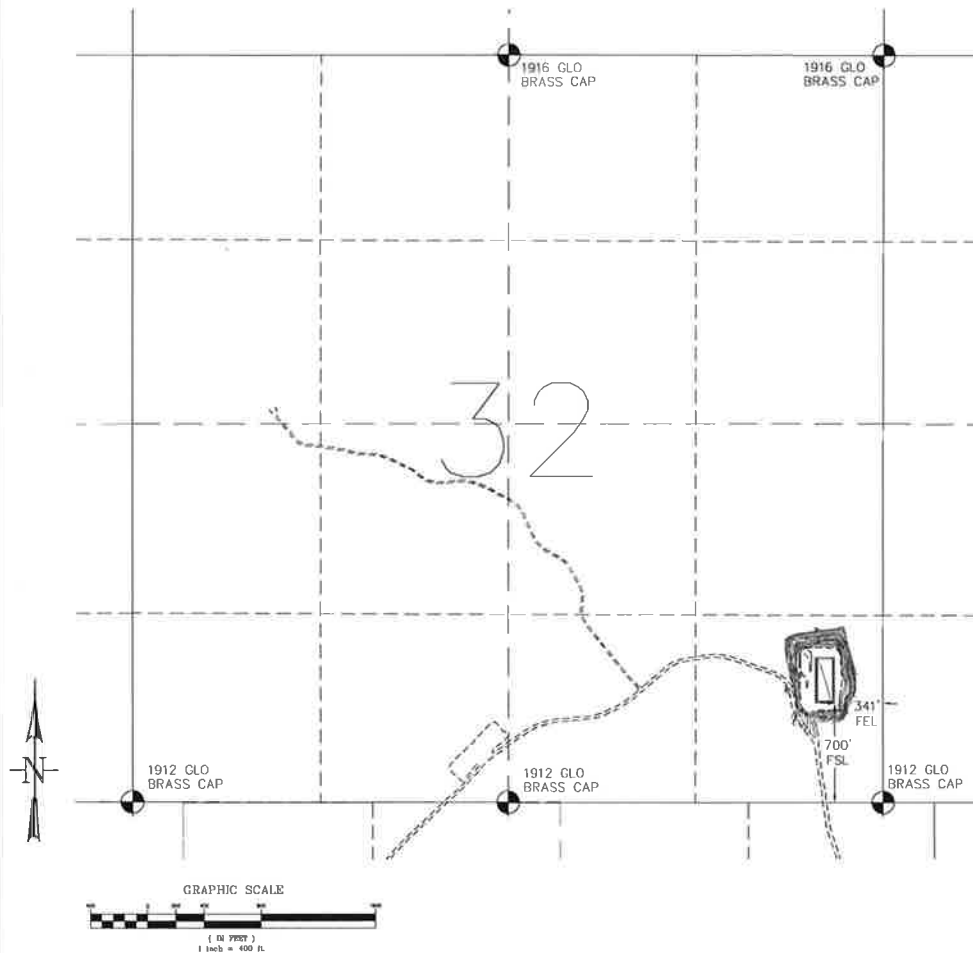
PROPERTY OWNER:
ENGANA OIL & GAS (USA) INC.

DRAFTED BY: BM
DATE: 02/11/13

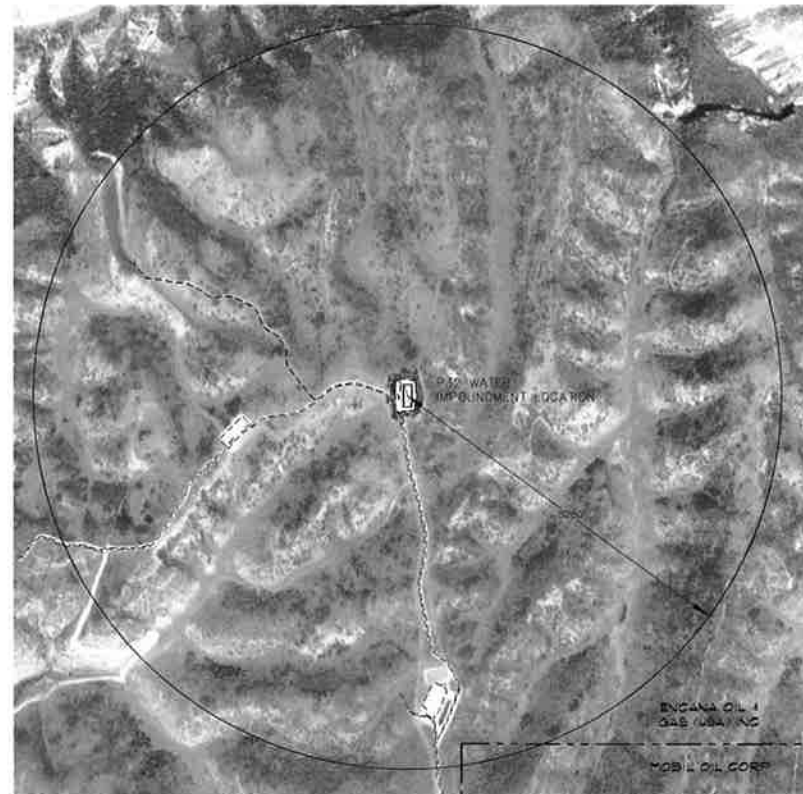
CHECKED BY: GB
DWG. OLD MOUNTAIN P32-595



PROJECT LOCATION MAP
& DRAINAGE BASIN PLAN



LOCATION MAP
PROPOSED P32 WATER IMPOUNDMENT FACILITY
 SITUATED IN 9E1/4 9E1/4, SECTION 32, T. 5 S., R. 95 W. 6th P.M.
 GARFIELD COUNTY COLORADO



NOTES:

NO KNOWN SURFACE WATER OR GROUND WATER WELLS
 LOCATED WITHIN A 1 MILE PERIMETER OF PROPOSED WATER
 IMPOUNDMENT FACILITY.

▶ INDICATES POTENTIAL MONITORING WELL LOCATIONS



CONSTRUCTION SURVEYS, INC.
 2017 BARRE BLVD.
 SALT, CO 81657
 970-816-5153

PROPERTY OWNER:
 ENGANA OIL & GAS (USA) INC.

DRAFTED BY: BW	CHECKED BY: GB
DATE: 02/11/13	DWG: OLD MOUNTAIN P32-595



LOCATION MAP