

[illegible]

Lease Review All CR																																																																																																																																																																																																																																																																																																																																																																																																																																																																																																																																																																																																																																																																														
Well Name: RAZOR 21C-2806B																																																																																																																																																																																																																																																																																																																																																																																																																																																																																																																																																																																																																																																																														
API Number 051233784000			WPC ID 1CO076967			Well Permit Number			Field Name DJ Horizontal Niobrara			County Weld		State CO																																																																																																																																																																																																																																																																																																																																																																																																																																																																																																																																																																																																																																																																
Well Configuration Type Lateral/Horizontal			Orig KB Elv (ft) 4,861.30			Ground Elevation (ft) 4,844.00			Casing Flange Elevation (ft)		Tubing Head Elevation (ft)		Total Depth (ftKB) 12,740.0																																																																																																																																																																																																																																																																																																																																																																																																																																																																																																																																																																																																																																																																	
Original Spud Date 11/17/2013		Completion Date 3/7/2014		Asset Group Redtail Asset Group			Responsible Engineer Andrew Fish			N/S Dist (ft) 405.0		N/S Ref FNL	E/W Dist (ft) 1,979.0		E/W Ref FWL																																																																																																																																																																																																																																																																																																																																																																																																																																																																																																																																																																																																																																																															
Lot		Quarter 1 NE	Quarter 2 NW	Quarter 3	Quarter 4	Section 21	Section Suffix	Section Type		Township 10	Township N/S Dir N	Range 58		Range E/W Dir W	Meridian 6TH																																																																																																																																																																																																																																																																																																																																																																																																																																																																																																																																																																																																																																																															
Lateral/Horizontal - Original Hole, 5/20/2014 11:05:23 AM																																																																																																																																																																																																																																																																																																																																																																																																																																																																																																																																																																																																																																																																														
Perforations																																																																																																																																																																																																																																																																																																																																																																																																																																																																																																																																																																																																																																																																														
<table><tr><th colspan="2">MD (ftKB)</th><th colspan="2">TV D (ftKB)</th><th colspan="2">n cl (°)</th><th colspan="2">Type of Hole</th><th colspan="2">Date</th><th colspan="2">Top (ftKB)</th><th colspan="2">Btm (ftKB)</th><th colspan="2">Zone</th></tr><tr><td colspan="2"></td><td colspan="2"></td><td colspan="2"></td><td colspan="2">Perforated Liner</td><td colspan="2">3/7/2014</td><td colspan="2">6,752.0</td><td colspan="2">6,754.0</td><td colspan="2">Niobrara, Original Hole</td></tr><tr><td colspan="2"></td><td colspan="2"></td><td colspan="2"></td><td colspan="2">Perforated Liner</td><td colspan="2">3/7/2014</td><td colspan="2">6,791.0</td><td colspan="2">6,793.0</td><td colspan="2">Niobrara, Original Hole</td></tr><tr><td colspan="2"></td><td colspan="2"></td><td colspan="2"></td><td colspan="2">Perforated Liner</td><td colspan="2">3/7/2014</td><td colspan="2">6,831.0</td><td colspan="2">6,833.0</td><td colspan="2">Niobrara, Original Hole</td></tr><tr><td colspan="2"></td><td colspan="2"></td><td colspan="2"></td><td colspan="2">Perforated Liner</td><td colspan="2">3/6/2014</td><td colspan="2">6,913.0</td><td colspan="2">6,915.0</td><td colspan="2">Niobrara, Original Hole</td></tr><tr><td colspan="2"></td><td colspan="2"></td><td colspan="2"></td><td colspan="2">Perforated Liner</td><td colspan="2">3/6/2014</td><td colspan="2">6,953.0</td><td colspan="2">6,955.0</td><td colspan="2">Niobrara, Original Hole</td></tr><tr><td colspan="2"></td><td colspan="2"></td><td colspan="2"></td><td colspan="2">Perforated Liner</td><td colspan="2">3/6/2014</td><td colspan="2">6,993.0</td><td colspan="2">6,995.0</td><td colspan="2">Niobrara, Original Hole</td></tr><tr><td colspan="2"></td><td colspan="2"></td><td colspan="2"></td><td colspan="2">Perforated Liner</td><td colspan="2">3/6/2014</td><td colspan="2">7,073.0</td><td colspan="2">7,075.0</td><td colspan="2">Niobrara, Original Hole</td></tr><tr><td colspan="2"></td><td colspan="2"></td><td colspan="2"></td><td colspan="2">Perforated Liner</td><td colspan="2">3/6/2014</td><td colspan="2">7,115.0</td><td colspan="2">7,117.0</td><td colspan="2">Niobrara, Original Hole</td></tr><tr><td colspan="2"></td><td colspan="2"></td><td colspan="2"></td><td colspan="2">Perforated Liner</td><td colspan="2">3/6/2014</td><td colspan="2">7,154.0</td><td colspan="2">7,156.0</td><td colspan="2">Niobrara, Original Hole</td></tr><tr><td colspan="2"></td><td colspan="2"></td><td colspan="2"></td><td colspan="2">Perforated Liner</td><td colspan="2">3/6/2014</td><td colspan="2">7,236.0</td><td colspan="2">7,238.0</td><td colspan="2">Niobrara, Original Hole</td></tr><tr><td colspan="2"></td><td colspan="2"></td><td colspan="2"></td><td colspan="2">Perforated Liner</td><td colspan="2">3/6/2014</td><td colspan="2">7,276.0</td><td colspan="2">7,278.0</td><td colspan="2">Niobrara, Original Hole</td></tr><tr><td colspan="2"></td><td colspan="2"></td><td colspan="2"></td><td colspan="2">Perforated Liner</td><td colspan="2">3/6/2014</td><td colspan="2">7,316.0</td><td colspan="2">7,318.0</td><td colspan="2">Niobrara, Original Hole</td></tr><tr><td colspan="2"></td><td colspan="2"></td><td colspan="2"></td><td colspan="2">Perforated Liner</td><td colspan="2">3/6/2014</td><td colspan="2">7,398.0</td><td colspan="2">7,400.0</td><td colspan="2">Niobrara, Original Hole</td></tr><tr><td colspan="2"></td><td colspan="2"></td><td colspan="2"></td><td colspan="2">Perforated Liner</td><td colspan="2">3/6/2014</td><td colspan="2">7,438.0</td><td colspan="2">7,440.0</td><td colspan="2">Niobrara, Original Hole</td></tr><tr><td colspan="2"></td><td colspan="2"></td><td colspan="2"></td><td colspan="2">Perforated Liner</td><td colspan="2">3/6/2014</td><td colspan="2">7,473.0</td><td colspan="2">7,475.0</td><td colspan="2">Niobrara, Original Hole</td></tr><tr><td colspan="2"></td><td colspan="2"></td><td colspan="2"></td><td colspan="2">Perforated Liner</td><td colspan="2">3/6/2014</td><td colspan="2">7,559.0</td><td colspan="2">7,561.0</td><td colspan="2">Niobrara, Original Hole</td></tr><tr><td colspan="2"></td><td colspan="2"></td><td colspan="2"></td><td colspan="2">Perforated Liner</td><td colspan="2">3/6/2014</td><td colspan="2">7,599.0</td><td colspan="2">7,601.0</td><td colspan="2">Niobrara, Original Hole</td></tr><tr><td colspan="2"></td><td colspan="2"></td><td colspan="2"></td><td colspan="2">Perforated Liner</td><td colspan="2">3/6/2014</td><td colspan="2">7,639.0</td><td colspan="2">7,641.0</td><td colspan="2">Niobrara, Original Hole</td></tr><tr><td colspan="2"></td><td colspan="2"></td><td colspan="2"></td><td colspan="2">Perforated Liner</td><td colspan="2">3/6/2014</td><td colspan="2">7,721.0</td><td colspan="2">7,723.0</td><td colspan="2">Niobrara, Original Hole</td></tr><tr><td colspan="2"></td><td colspan="2"></td><td colspan="2"></td><td colspan="2">Perforated Liner</td><td colspan="2">3/6/2014</td><td colspan="2">7,761.0</td><td colspan="2">7,763.0</td><td colspan="2">Niobrara, Original Hole</td></tr><tr><td colspan="2"></td><td colspan="2"></td><td colspan="2"></td><td colspan="2">Perforated Liner</td><td colspan="2">3/6/2014</td><td colspan="2">7,801.0</td><td colspan="2">7,803.0</td><td colspan="2">Niobrara, Original Hole</td></tr><tr><td colspan="2"></td><td colspan="2"></td><td colspan="2"></td><td colspan="2">Perforated Liner</td><td colspan="2">3/6/2014</td><td colspan="2">7,883.0</td><td colspan="2">7,885.0</td><td colspan="2">Niobrara, Original Hole</td></tr><tr><td colspan="2"></td><td colspan="2"></td><td colspan="2"></td><td colspan="2">Perforated Liner</td><td colspan="2">3/6/2014</td><td colspan="2">7,922.0</td><td colspan="2">7,924.0</td><td colspan="2">Niobrara, Original Hole</td></tr><tr><td colspan="2"></td><td colspan="2"></td><td colspan="2"></td><td colspan="2">Perforated Liner</td><td colspan="2">3/6/2014</td><td colspan="2">7,962.0</td><td colspan="2">7,964.0</td><td colspan="2">Niobrara, Original Hole</td></tr><tr><td colspan="2"></td><td colspan="2"></td><td colspan="2"></td><td colspan="2">Perforated Liner</td><td colspan="2">3/6/2014</td><td colspan="2">8,044.0</td><td colspan="2">8,046.0</td><td colspan="2">Niobrara, Original Hole</td></tr><tr><td colspan="2"></td><td colspan="2"></td><td colspan="2"></td><td colspan="2">Perforated Liner</td><td colspan="2">3/6/2014</td><td colspan="2">8,084.0</td><td colspan="2">8,086.0</td><td colspan="2">Niobrara, Original Hole</td></tr><tr><td colspan="2"></td><td colspan="2"></td><td colspan="2"></td><td colspan="2">Perforated Liner</td><td colspan="2">3/6/2014</td><td colspan="2">8,124.0</td><td colspan="2">8,126.0</td><td colspan="2">Niobrara, Original Hole</td></tr><tr><td colspan="2"></td><td colspan="2"></td><td colspan="2"></td><td colspan="2">Perforated Liner</td><td colspan="2">3/5/2014</td><td colspan="2">8,206.0</td><td colspan="2">8,208.0</td><td colspan="2">Niobrara, Original Hole</td></tr><tr><td colspan="2"></td><td colspan="2"></td><td colspan="2"></td><td colspan="2">Perforated Liner</td><td colspan="2">3/5/2014</td><td colspan="2">8,246.0</td><td colspan="2">8,248.0</td><td colspan="2">Niobrara, Original Hole</td></tr><tr><td colspan="2"></td><td colspan="2"></td><td colspan="2"></td><td colspan="2">Perforated Liner</td><td colspan="2">3/5/2014</td><td colspan="2">8,285.0</td><td colspan="2">8,287.0</td><td colspan="2">Niobrara, Original Hole</td></tr><tr><td colspan="2"></td><td colspan="2"></td><td colspan="2"></td><td colspan="2">Perforated Liner</td><td colspan="2">3/5/2014</td><td colspan="2">8,363.0</td><td colspan="2">8,365.0</td><td colspan="2">Niobrara, Original Hole</td></tr><tr><td colspan="2"></td><td colspan="2"></td><td colspan="2"></td><td colspan="2">Perforated Liner</td><td colspan="2">3/5/2014</td><td colspan="2">8,407.0</td><td colspan="2">8,409.0</td><td colspan="2">Niobrara, Original Hole</td></tr><tr><td colspan="2"></td><td colspan="2"></td><td colspan="2"></td><td colspan="2">Perforated Liner</td><td colspan="2">3/5/2014</td><td colspan="2">8,447.0</td><td colspan="2">8,449.0</td><td colspan="2">Niobrara, Original Hole</td></tr><tr><td colspan="2"></td><td colspan="2"></td><td colspan="2"></td><td colspan="2">Perforated Liner</td><td colspan="2">3/5/2014</td><td colspan="2">8,529.0</td><td colspan="2">8,531.0</td><td colspan="2">Niobrara, Original Hole</td></tr><tr><td colspan="2"></td><td colspan="2"></td><td colspan="2"></td><td colspan="2">Perforated Liner</td><td colspan="2">3/5/2014</td><td colspan="2">8,569.0</td><td colspan="2">8,571.0</td><td colspan="2">Niobrara, Original Hole</td></tr><tr><td colspan="2"></td><td colspan="2"></td><td colspan="2"></td><td colspan="2">Perforated Liner</td><td colspan="2">3/5/2014</td><td colspan="2">8,609.0</td><td colspan="2">8,611.0</td><td colspan="2">Niobrara, Original Hole</td></tr><tr><td colspan="2"></td><td colspan="2"></td><td colspan="2"></td><td colspan="2">Perforated Liner</td><td colspan="2">3/5/2014</td><td colspan="2">8,690.0</td><td colspan="2">8,692.0</td><td colspan="2">Niobrara, Original Hole</td></tr><tr><td colspan="2"></td><td colspan="2"></td><td colspan="2"></td><td colspan="2">Perforated Liner</td><td colspan="2">3/5/2014</td><td colspan="2">8,730.0</td><td colspan="2">8,732.0</td><td colspan="2">Niobrara, Original Hole</td></tr><tr><td colspan="2"></td><td colspan="2"></td><td colspan="2"></td><td colspan="2">Perforated Liner</td><td colspan="2">3/5/2014</td><td colspan="2">8,770.0</td><td colspan="2">8,772.0</td><td colspan="2">Niobrara, Original Hole</td></tr></table>															MD (ftKB)		TV D (ftKB)		n cl (°)		Type of Hole		Date		Top (ftKB)		Btm (ftKB)		Zone								Perforated Liner		3/7/2014		6,752.0		6,754.0		Niobrara, Original Hole								Perforated Liner		3/7/2014		6,791.0		6,793.0		Niobrara, Original Hole								Perforated Liner		3/7/2014		6,831.0		6,833.0		Niobrara, Original Hole								Perforated Liner		3/6/2014		6,913.0		6,915.0		Niobrara, Original Hole								Perforated Liner		3/6/2014		6,953.0		6,955.0		Niobrara, Original Hole								Perforated Liner		3/6/2014		6,993.0		6,995.0		Niobrara, Original Hole								Perforated Liner		3/6/2014		7,073.0		7,075.0		Niobrara, Original Hole								Perforated Liner		3/6/2014		7,115.0		7,117.0		Niobrara, Original Hole								Perforated Liner		3/6/2014		7,154.0		7,156.0		Niobrara, Original Hole								Perforated Liner		3/6/2014		7,236.0		7,238.0		Niobrara, Original Hole								Perforated Liner		3/6/2014		7,276.0		7,278.0		Niobrara, Original Hole								Perforated Liner		3/6/2014		7,316.0		7,318.0		Niobrara, Original Hole								Perforated Liner		3/6/2014		7,398.0		7,400.0		Niobrara, Original Hole								Perforated Liner		3/6/2014		7,438.0		7,440.0		Niobrara, Original Hole								Perforated Liner		3/6/2014		7,473.0		7,475.0		Niobrara, Original Hole								Perforated Liner		3/6/2014		7,559.0		7,561.0		Niobrara, Original Hole								Perforated Liner		3/6/2014		7,599.0		7,601.0		Niobrara, Original Hole								Perforated Liner		3/6/2014		7,639.0		7,641.0		Niobrara, Original Hole								Perforated Liner		3/6/2014		7,721.0		7,723.0		Niobrara, Original Hole								Perforated Liner		3/6/2014		7,761.0		7,763.0		Niobrara, Original Hole								Perforated Liner		3/6/2014		7,801.0		7,803.0		Niobrara, Original Hole								Perforated Liner		3/6/2014		7,883.0		7,885.0		Niobrara, Original Hole								Perforated Liner		3/6/2014		7,922.0		7,924.0		Niobrara, Original Hole								Perforated Liner		3/6/2014		7,962.0		7,964.0		Niobrara, Original Hole								Perforated Liner		3/6/2014		8,044.0		8,046.0		Niobrara, Original Hole								Perforated Liner		3/6/2014		8,084.0		8,086.0		Niobrara, Original Hole								Perforated Liner		3/6/2014		8,124.0		8,126.0		Niobrara, Original Hole								Perforated Liner		3/5/2014		8,206.0		8,208.0		Niobrara, Original Hole								Perforated Liner		3/5/2014		8,246.0		8,248.0		Niobrara, Original Hole								Perforated Liner		3/5/2014		8,285.0		8,287.0		Niobrara, Original Hole								Perforated Liner		3/5/2014		8,363.0		8,365.0		Niobrara, Original Hole								Perforated Liner		3/5/2014		8,407.0		8,409.0		Niobrara, Original Hole								Perforated Liner		3/5/2014		8,447.0		8,449.0		Niobrara, Original Hole								Perforated Liner		3/5/2014		8,529.0		8,531.0		Niobrara, Original Hole								Perforated Liner		3/5/2014		8,569.0		8,571.0		Niobrara, Original Hole								Perforated Liner		3/5/2014		8,609.0		8,611.0		Niobrara, Original Hole								Perforated Liner		3/5/2014		8,690.0		8,692.0		Niobrara, Original Hole								Perforated Liner		3/5/2014		8,730.0		8,732.0		Niobrara, Original Hole								Perforated Liner		3/5/2014		8,770.0		8,772.0		Niobrara, Original Hole	
MD (ftKB)		TV D (ftKB)		n cl (°)		Type of Hole		Date		Top (ftKB)		Btm (ftKB)		Zone																																																																																																																																																																																																																																																																																																																																																																																																																																																																																																																																																																																																																																																																
						Perforated Liner		3/7/2014		6,752.0		6,754.0		Niobrara, Original Hole																																																																																																																																																																																																																																																																																																																																																																																																																																																																																																																																																																																																																																																																
						Perforated Liner		3/7/2014		6,791.0		6,793.0		Niobrara, Original Hole																																																																																																																																																																																																																																																																																																																																																																																																																																																																																																																																																																																																																																																																
						Perforated Liner		3/7/2014		6,831.0		6,833.0		Niobrara, Original Hole																																																																																																																																																																																																																																																																																																																																																																																																																																																																																																																																																																																																																																																																
						Perforated Liner		3/6/2014		6,913.0		6,915.0		Niobrara, Original Hole																																																																																																																																																																																																																																																																																																																																																																																																																																																																																																																																																																																																																																																																
						Perforated Liner		3/6/2014		6,953.0		6,955.0		Niobrara, Original Hole																																																																																																																																																																																																																																																																																																																																																																																																																																																																																																																																																																																																																																																																
						Perforated Liner		3/6/2014		6,993.0		6,995.0		Niobrara, Original Hole																																																																																																																																																																																																																																																																																																																																																																																																																																																																																																																																																																																																																																																																
						Perforated Liner		3/6/2014		7,073.0		7,075.0		Niobrara, Original Hole																																																																																																																																																																																																																																																																																																																																																																																																																																																																																																																																																																																																																																																																
						Perforated Liner		3/6/2014		7,115.0		7,117.0		Niobrara, Original Hole																																																																																																																																																																																																																																																																																																																																																																																																																																																																																																																																																																																																																																																																
						Perforated Liner		3/6/2014		7,154.0		7,156.0		Niobrara, Original Hole																																																																																																																																																																																																																																																																																																																																																																																																																																																																																																																																																																																																																																																																
						Perforated Liner		3/6/2014		7,236.0		7,238.0		Niobrara, Original Hole																																																																																																																																																																																																																																																																																																																																																																																																																																																																																																																																																																																																																																																																
						Perforated Liner		3/6/2014		7,276.0		7,278.0		Niobrara, Original Hole																																																																																																																																																																																																																																																																																																																																																																																																																																																																																																																																																																																																																																																																
						Perforated Liner		3/6/2014		7,316.0		7,318.0		Niobrara, Original Hole																																																																																																																																																																																																																																																																																																																																																																																																																																																																																																																																																																																																																																																																
						Perforated Liner		3/6/2014		7,398.0		7,400.0		Niobrara, Original Hole																																																																																																																																																																																																																																																																																																																																																																																																																																																																																																																																																																																																																																																																
						Perforated Liner		3/6/2014		7,438.0		7,440.0		Niobrara, Original Hole																																																																																																																																																																																																																																																																																																																																																																																																																																																																																																																																																																																																																																																																
						Perforated Liner		3/6/2014		7,473.0		7,475.0		Niobrara, Original Hole																																																																																																																																																																																																																																																																																																																																																																																																																																																																																																																																																																																																																																																																
						Perforated Liner		3/6/2014		7,559.0		7,561.0		Niobrara, Original Hole																																																																																																																																																																																																																																																																																																																																																																																																																																																																																																																																																																																																																																																																
						Perforated Liner		3/6/2014		7,599.0		7,601.0		Niobrara, Original Hole																																																																																																																																																																																																																																																																																																																																																																																																																																																																																																																																																																																																																																																																
						Perforated Liner		3/6/2014		7,639.0		7,641.0		Niobrara, Original Hole																																																																																																																																																																																																																																																																																																																																																																																																																																																																																																																																																																																																																																																																
						Perforated Liner		3/6/2014		7,721.0		7,723.0		Niobrara, Original Hole																																																																																																																																																																																																																																																																																																																																																																																																																																																																																																																																																																																																																																																																
						Perforated Liner		3/6/2014		7,761.0		7,763.0		Niobrara, Original Hole																																																																																																																																																																																																																																																																																																																																																																																																																																																																																																																																																																																																																																																																
						Perforated Liner		3/6/2014		7,801.0		7,803.0		Niobrara, Original Hole																																																																																																																																																																																																																																																																																																																																																																																																																																																																																																																																																																																																																																																																
						Perforated Liner		3/6/2014		7,883.0		7,885.0		Niobrara, Original Hole																																																																																																																																																																																																																																																																																																																																																																																																																																																																																																																																																																																																																																																																
						Perforated Liner		3/6/2014		7,922.0		7,924.0		Niobrara, Original Hole																																																																																																																																																																																																																																																																																																																																																																																																																																																																																																																																																																																																																																																																
						Perforated Liner		3/6/2014		7,962.0		7,964.0		Niobrara, Original Hole																																																																																																																																																																																																																																																																																																																																																																																																																																																																																																																																																																																																																																																																
						Perforated Liner		3/6/2014		8,044.0		8,046.0		Niobrara, Original Hole																																																																																																																																																																																																																																																																																																																																																																																																																																																																																																																																																																																																																																																																
						Perforated Liner		3/6/2014		8,084.0		8,086.0		Niobrara, Original Hole																																																																																																																																																																																																																																																																																																																																																																																																																																																																																																																																																																																																																																																																
						Perforated Liner		3/6/2014		8,124.0		8,126.0		Niobrara, Original Hole																																																																																																																																																																																																																																																																																																																																																																																																																																																																																																																																																																																																																																																																
						Perforated Liner		3/5/2014		8,206.0		8,208.0		Niobrara, Original Hole																																																																																																																																																																																																																																																																																																																																																																																																																																																																																																																																																																																																																																																																
						Perforated Liner		3/5/2014		8,246.0		8,248.0		Niobrara, Original Hole																																																																																																																																																																																																																																																																																																																																																																																																																																																																																																																																																																																																																																																																
						Perforated Liner		3/5/2014		8,285.0		8,287.0		Niobrara, Original Hole																																																																																																																																																																																																																																																																																																																																																																																																																																																																																																																																																																																																																																																																
						Perforated Liner		3/5/2014		8,363.0		8,365.0		Niobrara, Original Hole																																																																																																																																																																																																																																																																																																																																																																																																																																																																																																																																																																																																																																																																
						Perforated Liner		3/5/2014		8,407.0		8,409.0		Niobrara, Original Hole																																																																																																																																																																																																																																																																																																																																																																																																																																																																																																																																																																																																																																																																
						Perforated Liner		3/5/2014		8,447.0		8,449.0		Niobrara, Original Hole																																																																																																																																																																																																																																																																																																																																																																																																																																																																																																																																																																																																																																																																
						Perforated Liner		3/5/2014		8,529.0		8,531.0		Niobrara, Original Hole																																																																																																																																																																																																																																																																																																																																																																																																																																																																																																																																																																																																																																																																
						Perforated Liner		3/5/2014		8,569.0		8,571.0		Niobrara, Original Hole																																																																																																																																																																																																																																																																																																																																																																																																																																																																																																																																																																																																																																																																
						Perforated Liner		3/5/2014		8,609.0		8,611.0		Niobrara, Original Hole																																																																																																																																																																																																																																																																																																																																																																																																																																																																																																																																																																																																																																																																
						Perforated Liner		3/5/2014		8,690.0		8,692.0		Niobrara, Original Hole																																																																																																																																																																																																																																																																																																																																																																																																																																																																																																																																																																																																																																																																
						Perforated Liner		3/5/2014		8,730.0		8,732.0		Niobrara, Original Hole																																																																																																																																																																																																																																																																																																																																																																																																																																																																																																																																																																																																																																																																
						Perforated Liner		3/5/2014		8,770.0		8,772.0		Niobrara, Original Hole																																																																																																																																																																																																																																																																																																																																																																																																																																																																																																																																																																																																																																																																



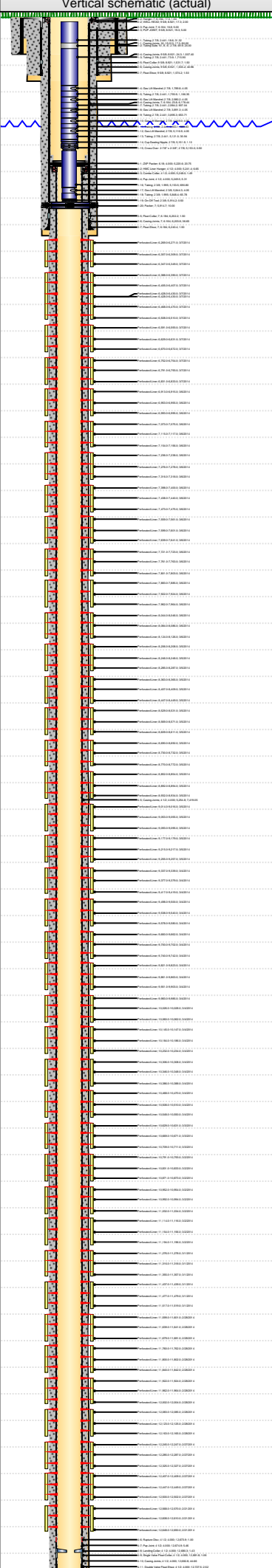
Lease Review All CR  
Well Name: RAZOR 21C-2806B

API Number 051233784000	WPC ID 1C0076967	Well Permit Number	Field Name DJ Horizontal Niobrara	County Weld	State CO
Well Configuration Type Lateral/Horizontal	Orig KB Elv (ft) 4,861.30	Ground Elevation (ft) 4,844.00	Casing Flange Elevation (ft)	Tubing Head Elevation (ft)	Total Depth (ftKB) 12,740.0
Original Spud Date 11/17/2013	Completion Date 3/7/2014	Asset Group Redtail Asset Group	Responsible Engineer Andrew Fish	N/S Dist (ft) 405.0	N/S Ref FNL
				E/W Dist (ft) 1,979.0	E/W Ref FWL
Lot	Quarter 1 NE	Quarter 2 NW	Quarter 3	Quarter 4	Section 21
			Section Suffix	Section Type	Township 10 N
					Township N/S Dir N
					Range 58 W
					Range E/W Dir W
					Meridian 6TH

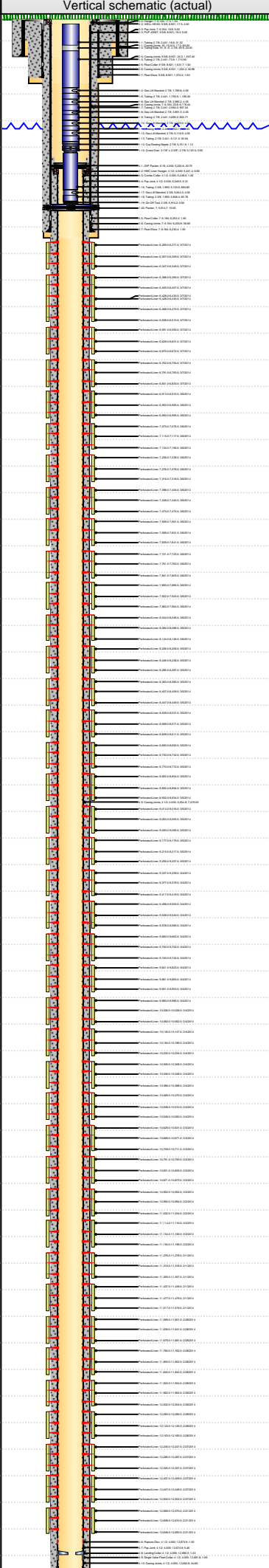
Lateral/Horizontal - Original Hole, 5/20/2014 11:05:24 AM						Perforations				
MD (ftKB)	TV D (ftKB)	n cl (°)	Vertical schematic (actual)	Logs	Type of Hole	Date	Top (ftKB)	Btm (ftKB)	Zone	
24.3	24.3	1.0			Perforated Liner	3/5/2014	8,852.0	8,854.0	Niobrara, Original Hole	
1,533.1	1,532.9	1.5			Perforated Liner	3/5/2014	8,892.0	8,894.0	Niobrara, Original Hole	
1,794.0	1,793.3	1.6			Perforated Liner	3/5/2014	8,932.0	8,934.0	Niobrara, Original Hole	
4,549.2	4,542.5	1.6			Perforated Liner	3/5/2014	9,014.0	9,016.0	Niobrara, Original Hole	
5,152.9	5,140.0	1.8			Perforated Liner	3/5/2014	9,053.0	9,055.0	Niobrara, Original Hole	
5,248.0	5,240.0	1.3			Perforated Liner	3/5/2014	9,093.0	9,095.0	Niobrara, Original Hole	
5,914.0	5,787.7	60.0			Perforated Liner	3/5/2014	9,177.0	9,179.0	Niobrara, Original Hole	
6,240.5	5,878.3	88.0			Perforated Liner	3/5/2014	9,215.0	9,217.0	Niobrara, Original Hole	
6,307.1	5,870.0	90.0			Perforated Liner	3/5/2014	9,255.0	9,257.0	Niobrara, Original Hole	
6,390.1	5,878.2	90.1			Perforated Liner	3/5/2014	9,337.0	9,339.0	Niobrara, Original Hole	
6,467.8	5,878.5	89.3			Perforated Liner	3/5/2014	9,377.0	9,379.0	Niobrara, Original Hole	
6,592.8	5,878.4	91.1			Perforated Liner	3/5/2014	9,417.0	9,419.0	Niobrara, Original Hole	
6,752.0	5,870.5	90.3			Perforated Liner	3/4/2014	9,498.0	9,500.0	Niobrara, Original Hole	
6,833.0	5,877.0	88.0			Perforated Liner	3/4/2014	9,538.0	9,540.0	Niobrara, Original Hole	
6,993.1	5,882.3	88.2			Perforated Liner	3/4/2014	9,578.0	9,580.0	Niobrara, Original Hole	
7,117.1	5,885.3	88.1			Perforated Liner	3/4/2014	9,660.0	9,662.0	Niobrara, Original Hole	
7,275.9	5,886.1	90.9			Perforated Liner	3/4/2014	9,700.0	9,702.0	Niobrara, Original Hole	
7,399.9	5,883.4	91.6			Perforated Liner	3/4/2014	9,740.0	9,742.0	Niobrara, Original Hole	
7,559.1	5,883.4	89.5			Perforated Liner	3/4/2014	9,821.0	9,823.0	Niobrara, Original Hole	
7,641.1	5,883.7	90.1			Perforated Liner	3/4/2014	9,861.0	9,863.0	Niobrara, Original Hole	
7,800.9	5,882.7	90.4			Perforated Liner	3/4/2014	9,901.0	9,903.0	Niobrara, Original Hole	
7,923.9	5,884.6	87.7			Perforated Liner	3/4/2014	9,983.0	9,985.0	Niobrara, Original Hole	
8,084.0	5,888.8	89.5			Perforated Liner	3/4/2014	10,026.0	10,028.0	Niobrara, Original Hole	
8,208.0	5,888.8	90.6			Perforated Liner	3/4/2014	10,060.0	10,062.0	Niobrara, Original Hole	
8,362.9	5,888.5	88.4			Perforated Liner	3/4/2014	10,145.0	10,147.0	Niobrara, Original Hole	
8,449.1	5,890.4	88.1			Perforated Liner	3/4/2014	10,184.0	10,186.0	Niobrara, Original Hole	
8,608.9	5,891.2	90.2			Perforated Liner	3/4/2014	10,232.0	10,234.0	Niobrara, Original Hole	
8,732.0	5,887.1	90.7			Perforated Liner	3/4/2014	10,236.0	10,238.0	Niobrara, Original Hole	
8,892.1	5,878.2	90.9			Perforated Liner	3/4/2014	10,274.0	10,276.0	Niobrara, Original Hole	
9,016.1	5,871.9	90.9			Perforated Liner	3/4/2014	10,306.0	10,308.0	Niobrara, Original Hole	
9,176.8	5,871.5	90.8			Perforated Liner	3/4/2014	10,346.0	10,348.0	Niobrara, Original Hole	
9,256.9	5,870.9	90.0			Perforated Liner	3/4/2014	10,386.0	10,388.0	Niobrara, Original Hole	
9,417.0	5,867.3	90.3			Perforated Liner	3/4/2014	10,468.0	10,470.0	Niobrara, Original Hole	
9,540.0	5,863.9	90.6			Perforated Liner	3/4/2014	10,508.0	10,510.0	Niobrara, Original Hole	
9,700.1	5,858.5	90.6			Perforated Liner	3/4/2014	10,548.0	10,550.0	Niobrara, Original Hole	
9,823.2	5,854.9	88.6			Perforated Liner	3/4/2014	10,629.0	10,631.0	Niobrara, Original Hole	
9,982.9	5,850.7	88.3			Perforated Liner	3/4/2014	10,669.0	10,671.0	Niobrara, Original Hole	
10,062.0	5,859.1	86.7			Perforated Liner	3/4/2014	10,709.0	10,711.0	Niobrara, Original Hole	
10,232.0	5,866.3	89.5			Perforated Liner	3/4/2014	10,791.0	10,793.0	Niobrara, Original Hole	
10,348.1	5,865.5	90.1			Perforated Liner	3/4/2014	10,831.0	10,833.0	Niobrara, Original Hole	
10,507.9	5,860.5	90.3			Perforated Liner	3/4/2014	10,871.0		Niobrara, Original Hole	
10,630.9	5,848.8	92.7			Perforated Liner	3/2/2014				
10,791.0	5,845.4	89.7			Perforated Liner	3/2/2014				
10,873.0	5,847.1	88.4			Perforated Liner	3/2/2014				
11,032.2	5,840.9	90.3			Perforated Liner	3/2/2014				
11,155.8	5,844.9	90.5			Perforated Liner	3/2/2014				
11,315.9	5,836.6	92.9			Perforated Liner	3/2/2014				
11,439.0	5,832.3	90.8			Perforated Liner	3/2/2014				
11,599.1	5,832.0	91.1			Perforated Liner	3/2/2014				
11,681.1	5,830.8	90.5			Perforated Liner	3/2/2014				
11,839.9	5,830.8	89.8			Perforated Liner	3/2/2014				
11,963.9	5,834.4	87.4			Perforated Liner	3/2/2014				
12,123.0	5,841.9	87.8			Perforated Liner	3/2/2014				
12,247.0	5,842.3	91.2			Perforated Liner	3/2/2014				
12,407.2	5,834.8	93.0			Perforated Liner	3/2/2014				
12,502.0	5,832.6	88.7			Perforated Liner	3/2/2014				
12,648.0	5,838.1	87.1			Perforated Liner	3/2/2014				
12,681.8	5,839.8	87.2			Perforated Liner	3/2/2014				





Lateral/Horizontal - Original Hole, 5/20/2014 11:05:25 AM				Perforations					
MD (ftKB)	TV D (ftKB)	n cl (°)		Type of Hole	Date	Top (ftKB)	Btm (ftKB)	Zone	
				Logs					
24.3	24.3	0.0		Perforated Liner	3/2/2014	10,952.0	10,954.0	Niobrara, Original Hole	
1,533.1	1,532.9	14		Perforated Liner	3/2/2014	10,992.0	10,994.0	Niobrara, Original Hole	
1,794.0	1,793.9	16		Perforated Liner	3/2/2014	11,032.0	11,034.0	Niobrara, Original Hole	
4,549.2	4,549.5	22		Perforated Liner	3/2/2014	11,114.0	11,116.0	Niobrara, Original Hole	
5,152.9	5,145.0	30		Perforated Liner	3/2/2014	11,154.0	11,156.0	Niobrara, Original Hole	
5,248.0	5,240.0	31		Perforated Liner	3/2/2014	11,194.0	11,196.0	Niobrara, Original Hole	
5,914.0	5,797.7	60.0		Perforated Liner	3/1/2014	11,276.0	11,278.0	Niobrara, Original Hole	
6,240.5	5,978.3	69.0		Perforated Liner	3/1/2014	11,316.0	11,318.0	Niobrara, Original Hole	
6,307.1	5,979.0	69.0		Perforated Liner	3/1/2014	11,355.0	11,357.0	Niobrara, Original Hole	
6,390.1	5,978.2	69.1		Perforated Liner	3/1/2014	11,437.0	11,439.0	Niobrara, Original Hole	
6,467.8	5,978.5	69.3		Perforated Liner	3/1/2014	11,477.0	11,479.0	Niobrara, Original Hole	
6,592.8	5,978.4	91.1		Perforated Liner	3/1/2014	11,517.0	11,519.0	Niobrara, Original Hole	
6,752.0	5,975.5	90.3		Perforated Liner	3/1/2014	11,599.0	11,601.0	Niobrara, Original Hole	
6,833.0	5,977.0	88.0		Perforated Liner	3/1/2014	11,639.0	11,641.0	Niobrara, Original Hole	
6,993.1	5,982.3	86.2		Perforated Liner	3/1/2014	11,679.0	11,681.0	Niobrara, Original Hole	
7,117.1	5,985.5	86.1		Perforated Liner	3/1/2014	11,760.0	11,762.0	Niobrara, Original Hole	
7,275.9	5,986.1	86.9		Perforated Liner	2/28/2014	11,800.0	11,802.0	Niobrara, Original Hole	
7,399.9	5,983.4	91.4		Perforated Liner	2/28/2014	11,840.0	11,842.0	Niobrara, Original Hole	
7,559.1	5,983.4	90.5		Perforated Liner	2/28/2014	11,922.0	11,924.0	Niobrara, Original Hole	
7,641.1	5,983.7	90.1		Perforated Liner	2/28/2014	11,962.0	11,964.0	Niobrara, Original Hole	
7,800.9	5,982.7	90.4		Perforated Liner	2/28/2014	12,002.0	12,004.0	Niobrara, Original Hole	
7,923.9	5,984.6	91.7		Perforated Liner	2/28/2014	12,083.0	12,085.0	Niobrara, Original Hole	
8,084.0	5,988.9	90.5		Perforated Liner	2/28/2014	12,123.0	12,125.0	Niobrara, Original Hole	
8,208.0	5,988.8	90.6		Perforated Liner	2/28/2014	12,163.0	12,165.0	Niobrara, Original Hole	
8,362.9	5,988.5	88.4		Perforated Liner	2/28/2014	12,245.0	12,247.0	Niobrara, Original Hole	
8,449.1	5,990.4	90.1		Perforated Liner	2/28/2014	12,285.0	12,287.0	Niobrara, Original Hole	
8,608.9	5,997.2	90.2		Perforated Liner	2/28/2014	12,325.0	12,327.0	Niobrara, Original Hole	
8,732.0	5,987.1	90.7		Perforated Liner	2/28/2014	12,407.0	12,409.0	Niobrara, Original Hole	
8,892.1	5,979.2	90.9		Perforated Liner	2/28/2014	12,447.0	12,449.0	Niobrara, Original Hole	
9,016.1	5,971.9	90.6		Perforated Liner	2/28/2014	12,500.0	12,502.0	Niobrara, Original Hole	
9,176.8	5,977.5	90.8		Perforated Liner	2/28/2014	12,568.0	12,570.0	Niobrara, Original Hole	
9,256.9	5,970.9	90.0		Perforated Liner	2/28/2014	12,608.0	12,610.0	Niobrara, Original Hole	
9,417.0	5,967.3	90.3		Perforated Liner	2/28/2014	12,648.0	12,650.0	Niobrara, Original Hole	
9,540.0	5,963.9	90.4		Perforated Liner	2/27/2014				
9,700.1	5,958.5	92.6		Perforated Liner	2/27/2014				
9,823.2	5,954.9	90.6		Perforated Liner	2/27/2014				
9,982.9	5,955.7	88.2		Perforated Liner	2/27/2014				
10,062.0	5,959.1	86.7		Perforated Liner	2/27/2014				
10,232.0	5,966.3	86.6		Perforated Liner	2/27/2014				
10,348.1	5,963.5	91.1	Perforated Liner	2/27/2014					
10,507.9	5,955.5	90.2	Perforated Liner	2/27/2014					
10,630.9	5,948.8	92.7	Perforated Liner	2/27/2014					
10,791.0	5,945.4	90.7	Perforated Liner	2/27/2014					
10,873.0	5,947.1	88.4	Perforated Liner	2/27/2014					
11,032.2	5,949.9	90.2	Perforated Liner	2/21/2014					
11,155.8	5,944.9	90.5	Perforated Liner	2/21/2014					
11,315.9	5,936.6	92.9	Perforated Liner	2/21/2014					
11,439.0	5,932.3	90.9	Perforated Liner	2/21/2014					
11,599.1	5,932.0	91.1	Perforated Liner	2/21/2014					
11,681.1	5,930.8	90.5	Perforated Liner	2/21/2014					
11,839.9	5,930.8	89.8	Perforated Liner	2/21/2014					
11,963.9	5,924.4	87.4	Perforated Liner	2/21/2014					
12,123.0	5,941.9	87.6	Perforated Liner	2/21/2014					
12,247.0	5,942.3	91.2	Perforated Liner	2/21/2014					
12,407.2	5,939.8	91.0	Perforated Liner	2/21/2014					
12,502.0	5,932.6	89.7	Perforated Liner	2/21/2014					
12,648.0	5,936.1	87.1	Perforated Liner	2/21/2014					
12,681.8	5,939.8	87.2	Perforated Liner	2/21/2014					
Stim/Treat Stages									
				Stage Type	Start Date	Top (ftKB)	Btm (ftKB)	Stim/Treat Fluid	Vol Clean Pump (bbl)
				Frac	3/7/2014	6,269.0	6,349.0	40/70# 2968, 20/40# 145312, Slick Water	2997.00
				Frac	3/7/2014	6,388.0	6,510.0	40/70# 3047, 20/40# 145048, Slick Water	2979.00
				Frac	3/6/2014	6,591.0	6,672.0	40/70# 3302, 20/40# 146286, Slick Water	3286.00
				Frac	3/6/2014	6,752.0	6,833.0	40/70# 3052, 20/40# 150015, Slick Water	3018.00

Lease Review All CR															
Well Name: RAZOR 21C-2806B															
API Number 051233784000			WPC ID 1CO076967			Well Permit Number			Field Name DJ Horizontal Niobrara			County Weld		State CO	
Well Configuration Type Lateral/Horizontal			Orig KB Elv (ft) 4,861.30			Ground Elevation (ft) 4,844.00			Casing Flange Elevation (ft)		Tubing Head Elevation (ft)		Total Depth (ftKB) 12,740.0		
Original Spud Date 11/17/2013		Completion Date 3/7/2014		Asset Group Redtail Asset Group			Responsible Engineer Andrew Fish			N/S Dist (ft) 405.0		N/S Ref FNL	E/W Dist (ft) 1,979.0		E/W Ref FWL
Lot		Quarter 1 NE	Quarter 2 NW	Quarter 3	Quarter 4	Section 21	Section Suffix	Section Type		Township 10	Township N/S Dir N	Range 58	Range E/W Dir W	Meridian 6TH	
Lateral/Horizontal - Original Hole, 5/20/2014 11:05:26 AM						Stim/Treat Stages									
MD (ftKB)	TV D (ftKB)	n (°)	Vertical schematic (actual)			Logs	Stage Type	Start Date	Top (ftKB)	Btm (ftKB)	Stim/Treat Fluid			Vol Clean Pump (bbl)	
24.3	24.3	0.0					Frac	3/6/2014	6,913.0	6,995.0	40/70# 2961, 20/40# 150868, Slick Water			3038.00	
1,533.1	1,532.9	1.8					Frac	3/6/2014	7,073.0	7,156.0	40/70# 2950, 20/40# 155688, Slick Water			3050.00	
1,794.0	1,793.3	1.6					Frac	3/6/2014	7,236.0	7,318.0	40/70# 3080, 20/40# 150546, Slick Water			3009.00	
4,549.2	4,542.5	1.6					Frac	3/6/2014	7,398.0	7,475.0	40/70# 2720, 20/40# 157102, Slick Water			3065.00	
5,152.9	5,145.0	1.8					Frac	3/6/2014	7,559.0	7,641.0	40/70# 3929, 20/40# 153183, Slick Water			3048.00	
5,248.0	5,240.0	1.3					Frac	3/6/2014	7,721.0	7,803.0	40/70# 3265, 20/40# 151592, Slick Water			3057.00	
5,914.0	5,787.7	60.0					Frac	3/6/2014	7,883.0	7,964.0	40/70# 3188, 20/40# 148950, Slick Water			3043.00	
6,240.5	5,878.3	88.0					Frac	3/5/2014	8,044.0	8,126.0	40/70# 3322, 20/40# 150478, Slick Water			3060.00	
6,307.1	5,879.0	86.0					Frac	3/5/2014	8,206.0	8,287.0	40/70# 2911, 20/40# 149447, 15%HCl# 24bls, Slick Water			3123.00	
6,390.1	5,878.2	90.1					Frac	3/5/2014	8,363.0	8,449.0	40/70# 3286, 20/40# 149857, 15%HCl# 24bls, Slick Water			3265.00	
6,467.8	5,878.5	89.3					Frac	3/5/2014	8,529.0	8,611.0	40/70# 3152, 20/40# 154040, Slick Water			3038.00	
6,592.8	5,878.4	91.1					Frac	3/5/2014	8,690.0	8,772.0	40/70# 3228, 20/40# 151612, Slick Water			3039.00	
6,752.0	5,875.5	90.3					Frac	3/5/2014	8,852.0	8,934.0	40/70# 3440, 20/40# 150020, Slick Water			3039.00	
6,833.0	5,877.0	88.0					Frac	3/5/2014	9,014.0	9,095.0	40/70# 3161, 20/40# 144642, Slick Water			3030.00	
6,993.1	5,882.3	88.2					Frac	3/4/2014	9,177.0	9,257.0	40/70# 2390, 20/40# 149906, Slick Water			3076.00	
7,117.1	5,885.3	88.1					Frac	3/4/2014	9,337.0	9,419.0	40/70# 2654, 20/40# 151206, 15%HCl# 25bls, Slick Water			3076.00	
7,275.9	5,886.1	90.9					Frac	3/4/2014	9,498.0	9,580.0	40/70# 2222, 20/40# 150767, 15%HCl# 23bls, Slick Water			3089.00	
7,399.9	5,883.4	91.6					Frac	3/4/2014	9,660.0	9,742.0	40/70# 2518, 20/40# 149797, 15%HCl# 28bls, Slick Water			3509.00	
7,559.1	5,883.4	89.5					Frac	3/4/2014	9,821.0	9,903.0	40/70# 2250, 20/40# 151613, Slick Water			3076.00	
7,641.1	5,883.7	90.1					Frac	3/4/2014	9,983.0	10,062.0	40/70# 2609, 20/40# 155340, 15%HCl# 24bls, Slick Water			3132.00	
7,800.9	5,882.7	90.4					Frac	3/4/2014	10,145.0	10,234.0	40/70# 2535, 20/40# 154293, 15%HCl# 24bls, Slick Water			3122.00	
7,923.9	5,884.6	87.7					Frac	3/4/2014	10,306.0	10,388.0	40/70# 2632, 20/40# 149621, 15%HCl# 24bls, Slick Water			3132.00	
8,084.0	5,888.8	89.5					Frac	3/3/2014	10,468.0	10,550.0	40/70# 2680, 20/40# 155323, 15%HCl# 23bls, Slick Water			3150.00	
8,208.0	5,888.8	90.6					Frac	3/3/2014	10,629.0	10,711.0	40/70# 3460, 20/40# 146434, 15%HCl# 23bls, Slick Water			3177.00	
8,362.9	5,888.5	98.4					Frac	3/2/2014	10,791.0	10,873.0	40/70# 2432, 20/40# 145531, 15%HCl# 23bls, Slick Water			3139.00	
8,449.1	5,890.4	89.1					Frac	3/2/2014	10,952.0	11,034.0	40/70# 3135, 20/40# 147293, 15%HCl# 23bls, Slick Water			3155.00	
8,608.9	5,891.2	90.2					Frac	3/2/2014	11,114.0	11,196.0	40/70# 2799, 20/40# 65608, 15%HCl# 31bls, Slick Water			2678.00	
8,732.0	5,887.1	90.7					Frac	3/1/2014	11,276.0	11,357.0	40/70# 1824, 20/40# 135277, 15%HCl# 22v, Slick Water			3241.00	
8,892.1	5,878.2	90.9					Frac	3/1/2014	11,437.0	11,519.0	40/70# 1488, 20/40# 138264, 15%HCl# 24bls, Slick Water			3436.00	
9,016.1	5,871.9	90.9					Frac	2/28/2014	11,599.0	11,681.0	40/70# 6606, 20/40# 147098, 15%HCl# 21bls, Slick Water			3266.00	
9,176.8	5,871.5	90.8					Frac	2/28/2014	11,760.0	11,842.0	40/70# 3040, 20/40# 146173, 15%HCl# 23bls, Slick Water			3157.00	
9,256.9	5,870.9	90.0													
9,417.0	5,867.3	90.3													
9,540.0	5,863.9	90.6													
9,700.1	5,858.5	92.6													
9,823.2	5,854.9	88.6													
9,982.9	5,850.7	88.3													
10,062.0	5,859.1	86.7													
10,232.0	5,866.3	89.5													
10,348.1	5,865.5	90.1													
10,507.9	5,860.5	90.3													
10,630.9	5,848.8	82.7													
10,791.0	5,845.4	89.7													
10,873.0	5,847.1	88.4													
11,032.2	5,840.9	90.3													
11,155.8	5,844.9	90.5													
11,315.9	5,836.6	90.9													
11,439.0	5,832.3	90.8													
11,599.1	5,832.0	91.1													
11,681.1	5,830.8	90.5													
11,839.9	5,830.8	89.8													
11,963.9	5,834.4	87.4													
12,123.0	5,841.9	87.8													
12,247.0	5,842.3	91.2													
12,407.2	5,834.8	93.0													
12,502.0	5,832.6	88.7													
12,648.0	5,838.1	87.1													
12,681.8	5,839.8	87.2													

Lease Review All CR																																																																																																																																																																																																																																																																																																											
Well Name: RAZOR 21C-2806B																																																																																																																																																																																																																																																																																																											
API Number 051233784000			WPC ID 1CO076967			Well Permit Number			Field Name DJ Horizontal Niobrara			County Weld		State CO																																																																																																																																																																																																																																																																																													
Well Configuration Type Lateral/Horizontal			Orig KB Elv (ft) 4,861.30			Ground Elevation (ft) 4,844.00			Casing Flange Elevation (ft)		Tubing Head Elevation (ft)		Total Depth (ftKB) 12,740.0																																																																																																																																																																																																																																																																																														
Original Spud Date 11/17/2013		Completion Date 3/7/2014		Asset Group Redtail Asset Group			Responsible Engineer Andrew Fish			N/S Dist (ft) 405.0		N/S Ref FNL	E/W Dist (ft) 1,979.0		E/W Ref FWL																																																																																																																																																																																																																																																																																												
Lot		Quarter 1 NE	Quarter 2 NW	Quarter 3	Quarter 4	Section 21	Section Suffix	Section Type		Township 10	Township N/S Dir N	Range 58	Range E/W Dir W	Meridian 6TH																																																																																																																																																																																																																																																																																													
Lateral/Horizontal - Original Hole, 5/20/2014 11:05:27 AM								Stim/Treat Stages																																																																																																																																																																																																																																																																																																			
MD (ftKB)	TV D (ftKB)	n cl (° B)	Vertical schematic (actual)	Logs	Stage Type	Start Date	Top (ftKB)	Btm (ftKB)	Stim/Treat Fluid			Vol Clean Pump (bbl)																																																																																																																																																																																																																																																																																															
					Frac	2/28/2014	11,922.0	12,004.0	40/70# 3825, 20/40# 134516, 15%HCl# 28bls , Slick Water			3195.00																																																																																																																																																																																																																																																																																															
24.3	24.3	0.0			Frac	2/28/2014	12,083.0	12,165.0	40/70# 3438, 20/40# 147453, 15%HCl# 23bls, Slick Water			3204.00																																																																																																																																																																																																																																																																																															
1,533.1	1,532.9	14			Frac	2/27/2014	12,245.0	12,327.0	40/70# 3285, 20/40# 148765, 15%HCl# 22bls, Slick Water			3156.00																																																																																																																																																																																																																																																																																															
1,794.0	1,793.3	34			Frac	2/27/2014	12,407.0	12,502.0	40/70# 3483, 20/40# 128282, 15%HCl# 31bls, Slick Water			3664.00																																																																																																																																																																																																																																																																																															
4,549.2	4,549.5	39			Frac	2/27/2014	12,568.0	12,650.0	40/70# 3977, 20/40# 36718, 15%HCl# 39bls, Slick Water			3692.00																																																																																																																																																																																																																																																																																															
5,152.9	5,145.0	30			<div>Set Depth (ftKB) 5,924.7</div> <div>Comment</div> <div>Run Date 3/31/2014</div> <div>Pull Date</div> <table><thead><tr><th>Item Des</th><th>OD (in)</th><th>ID (in)</th><th>Len (ft)</th><th>Top (ftKB)</th><th>Btm (ftKB)</th></tr></thead><tbody><tr><td>Tubing</td><td>2 7/8</td><td>2.441</td><td>31.32</td><td>18.6</td><td>49.9</td></tr><tr><td>Tubing Subs 10', 8', 6'</td><td>2 7/8</td><td></td><td>24.00</td><td>49.9</td><td>73.9</td></tr><tr><td>Tubing</td><td>2 7/8</td><td>2.441</td><td>1,715.90</td><td>73.9</td><td>1,789.8</td></tr><tr><td>Gas Lift Mandrel</td><td>2 7/8</td><td></td><td>4.05</td><td>1,789.8</td><td>1,793.9</td></tr><tr><td>Tubing</td><td>2 7/8</td><td>2.441</td><td>1,186.35</td><td>1,793.9</td><td>2,980.2</td></tr><tr><td>Gas Lift Mandrel</td><td>2 7/8</td><td></td><td>4.05</td><td>2,980.2</td><td>2,984.3</td></tr><tr><td>Tubing</td><td>2 7/8</td><td>2.441</td><td>907.04</td><td>2,984.3</td><td>3,891.3</td></tr><tr><td>Gas Lift Mandrel</td><td>2 7/8</td><td></td><td>4.05</td><td>3,891.3</td><td>3,895.3</td></tr><tr><td>Tubing</td><td>2 7/8</td><td>2.441</td><td>653.71</td><td>3,895.3</td><td>4,549.1</td></tr><tr><td>Gas Lift Mandrel</td><td>2 7/8</td><td></td><td>4.05</td><td>4,549.1</td><td>4,553.1</td></tr><tr><td>Tubing</td><td>2 7/8</td><td>2.441</td><td>563.83</td><td>4,553.1</td><td>5,116.9</td></tr><tr><td>Gas Lift Mandrel</td><td>2 7/8</td><td></td><td>4.05</td><td>5,116.9</td><td>5,121.0</td></tr><tr><td>Tubing</td><td>2 7/8</td><td>2.441</td><td>30.94</td><td>5,121.0</td><td>5,151.9</td></tr><tr><td>Cup Seating Nipple</td><td>2 7/8</td><td></td><td>1.10</td><td>5,151.9</td><td>5,153.0</td></tr><tr><td>Cross Over 2-7/8" x 2-3/8"</td><td>2 7/8</td><td></td><td>0.50</td><td>5,153.0</td><td>5,153.5</td></tr><tr><td>Tubing</td><td>2 3/8</td><td>1.995</td><td>690.80</td><td>5,153.5</td><td>5,844.3</td></tr><tr><td>Gas Lift Mandrel</td><td>2 3/8</td><td></td><td>4.05</td><td>5,844.3</td><td>5,848.4</td></tr><tr><td>Tubing</td><td>2 3/8</td><td>1.995</td><td>65.78</td><td>5,848.4</td><td>5,914.2</td></tr><tr><td>On-Off Tool</td><td>2 3/8</td><td></td><td>0.50</td><td>5,914.2</td><td>5,914.7</td></tr><tr><td>Packer</td><td>7</td><td></td><td>10.00</td><td>5,914.7</td><td>5,924.7</td></tr></tbody></table> <div>Rod Strings</div> <div>&lt;des&gt; on &lt;dtmrun&gt;</div> <table><thead><tr><th>Rod Description</th><th>Run Date</th><th>Pull Date</th></tr></thead><tbody><tr><td></td><td></td><td></td></tr></tbody></table> <div>Other Strings</div> <table><thead><tr><th>Set Depth (ftKB)</th><th>Comment</th><th>Run Date</th><th>Pull Date</th></tr></thead><tbody><tr><td></td><td></td><td></td><td></td></tr></tbody></table> <table><thead><tr><th>Item Des</th><th>OD (in)</th><th>Len (ft)</th><th>Top (ftKB)</th><th>Btm (ftKB)</th></tr></thead><tbody><tr><td></td><td></td><td></td><td></td><td></td></tr></tbody></table> <div>Other In Hole</div> <table><thead><tr><th>Des</th><th>OD (in)</th><th>Run Date</th><th>Pull Date</th><th>Top (ftKB)</th><th>Btm (ftKB)</th></tr></thead><tbody><tr><td>CFP</td><td>4</td><td>3/7/2014</td><td>3/29/2014</td><td>6,370.0</td><td>6,372.0</td></tr><tr><td>CFP</td><td>4</td><td>3/7/2014</td><td>3/29/2014</td><td>6,445.0</td><td>6,447.0</td></tr><tr><td>CFP</td><td>4</td><td>3/7/2014</td><td>3/29/2014</td><td>6,550.0</td><td>6,552.0</td></tr><tr><td>CFP</td><td>4</td><td>3/7/2014</td><td>3/29/2014</td><td>6,712.0</td><td>6,714.0</td></tr><tr><td>CFP</td><td>4</td><td>3/7/2014</td><td>3/29/2014</td><td>6,873.0</td><td>6,875.0</td></tr><tr><td>CFP</td><td>4</td><td>3/6/2014</td><td>3/29/2014</td><td>7,040.0</td><td>7,042.0</td></tr><tr><td>CFP</td><td>4</td><td>3/6/2014</td><td>3/29/2014</td><td>7,196.0</td><td>7,198.0</td></tr><tr><td>CFP</td><td>4</td><td>3/6/2014</td><td>3/30/2014</td><td>7,358.0</td><td>7,360.0</td></tr><tr><td>CFP</td><td>4</td><td>3/6/2014</td><td>3/30/2014</td><td>7,519.0</td><td>7,521.0</td></tr><tr><td>CFP</td><td>4</td><td>3/6/2014</td><td>3/30/2014</td><td>7,681.0</td><td>7,683.0</td></tr><tr><td>CFP</td><td>4</td><td>3/6/2014</td><td>3/30/2014</td><td>7,843.0</td><td>7,845.0</td></tr><tr><td>CFP</td><td>4</td><td>3/6/2014</td><td>3/30/2014</td><td>8,004.0</td><td>8,006.0</td></tr><tr><td>CFP</td><td>4</td><td>3/6/2014</td><td>3/30/2014</td><td>8,166.0</td><td>8,168.0</td></tr><tr><td>CFP</td><td>4</td><td>3/5/2014</td><td>3/30/2014</td><td>8,320.0</td><td>8,322.0</td></tr><tr><td>CFP</td><td>4</td><td>3/5/2014</td><td>3/30/2014</td><td>8,489.0</td><td>8,491.0</td></tr><tr><td>CFP</td><td>4</td><td>3/5/2014</td><td>3/30/2014</td><td>8,651.0</td><td>8,653.0</td></tr><tr><td>CFP</td><td>4</td><td>3/5/2014</td><td>3/30/2014</td><td>8,812.0</td><td>8,814.0</td></tr><tr><td>CFP</td><td>4</td><td>3/5/2014</td><td>3/30/2014</td><td>8,973.0</td><td>8,975.0</td></tr><tr><td>CFP</td><td>4</td><td>3/5/2014</td><td>3/30/2014</td><td>9,135.0</td><td>9,137.0</td></tr><tr><td>CFP</td><td>4</td><td>3/5/2014</td><td>3/30/2014</td><td>9,297.0</td><td>9,297.0</td></tr><tr><td>CFP</td><td>4</td><td>3/4/2014</td><td>3/30/2014</td><td>9,458.0</td><td>9,460.0</td></tr><tr><td>CFP</td><td>4</td><td>3/4/2014</td><td>3/30/2014</td><td>9,617.0</td><td>9,619.0</td></tr><tr><td>CFP</td><td>4</td><td>3/4/2014</td><td>3/30/2014</td><td>9,782.0</td><td>9,784.0</td></tr></tbody></table>	Item Des	OD (in)	ID (in)	Len (ft)	Top (ftKB)	Btm (ftKB)	Tubing	2 7/8	2.441	31.32	18.6	49.9	Tubing Subs 10', 8', 6'	2 7/8		24.00	49.9	73.9	Tubing	2 7/8	2.441	1,715.90	73.9	1,789.8	Gas Lift Mandrel	2 7/8		4.05	1,789.8	1,793.9	Tubing	2 7/8	2.441	1,186.35	1,793.9	2,980.2	Gas Lift Mandrel	2 7/8		4.05	2,980.2	2,984.3	Tubing	2 7/8	2.441	907.04	2,984.3	3,891.3	Gas Lift Mandrel	2 7/8		4.05	3,891.3	3,895.3	Tubing	2 7/8	2.441	653.71	3,895.3	4,549.1	Gas Lift Mandrel	2 7/8		4.05	4,549.1	4,553.1	Tubing	2 7/8	2.441	563.83	4,553.1	5,116.9	Gas Lift Mandrel	2 7/8		4.05	5,116.9	5,121.0	Tubing	2 7/8	2.441	30.94	5,121.0	5,151.9	Cup Seating Nipple	2 7/8		1.10	5,151.9	5,153.0	Cross Over 2-7/8" x 2-3/8"	2 7/8		0.50	5,153.0	5,153.5	Tubing	2 3/8	1.995	690.80	5,153.5	5,844.3	Gas Lift Mandrel	2 3/8		4.05	5,844.3	5,848.4	Tubing	2 3/8	1.995	65.78	5,848.4	5,914.2	On-Off Tool	2 3/8		0.50	5,914.2	5,914.7	Packer	7		10.00	5,914.7	5,924.7	Rod Description	Run Date	Pull Date				Set Depth (ftKB)	Comment	Run Date	Pull Date					Item Des	OD (in)	Len (ft)	Top (ftKB)	Btm (ftKB)						Des	OD (in)	Run Date	Pull Date	Top (ftKB)	Btm (ftKB)	CFP	4	3/7/2014	3/29/2014	6,370.0	6,372.0	CFP	4	3/7/2014	3/29/2014	6,445.0	6,447.0	CFP	4	3/7/2014	3/29/2014	6,550.0	6,552.0	CFP	4	3/7/2014	3/29/2014	6,712.0	6,714.0	CFP	4	3/7/2014	3/29/2014	6,873.0	6,875.0	CFP	4	3/6/2014	3/29/2014	7,040.0	7,042.0	CFP	4	3/6/2014	3/29/2014	7,196.0	7,198.0	CFP	4	3/6/2014	3/30/2014	7,358.0	7,360.0	CFP	4	3/6/2014	3/30/2014	7,519.0	7,521.0	CFP	4	3/6/2014	3/30/2014	7,681.0	7,683.0	CFP	4	3/6/2014	3/30/2014	7,843.0	7,845.0	CFP	4	3/6/2014	3/30/2014	8,004.0	8,006.0	CFP	4	3/6/2014	3/30/2014	8,166.0	8,168.0	CFP	4	3/5/2014	3/30/2014	8,320.0	8,322.0	CFP	4	3/5/2014	3/30/2014	8,489.0	8,491.0	CFP	4	3/5/2014	3/30/2014	8,651.0	8,653.0	CFP	4	3/5/2014	3/30/2014	8,812.0	8,814.0	CFP	4	3/5/2014	3/30/2014	8,973.0	8,975.0	CFP	4	3/5/2014	3/30/2014	9,135.0	9,137.0	CFP	4	3/5/2014	3/30/2014	9,297.0	9,297.0	CFP	4	3/4/2014	3/30/2014	9,458.0	9,460.0	CFP	4	3/4/2014	3/30/2014	9,617.0	9,619.0	CFP	4	3/4/2014	3/30/2014	9,782.0	9,784.0
Item Des	OD (in)	ID (in)				Len (ft)	Top (ftKB)	Btm (ftKB)																																																																																																																																																																																																																																																																																																			
Tubing	2 7/8	2.441				31.32	18.6	49.9																																																																																																																																																																																																																																																																																																			
Tubing Subs 10', 8', 6'	2 7/8					24.00	49.9	73.9																																																																																																																																																																																																																																																																																																			
Tubing	2 7/8	2.441				1,715.90	73.9	1,789.8																																																																																																																																																																																																																																																																																																			
Gas Lift Mandrel	2 7/8					4.05	1,789.8	1,793.9																																																																																																																																																																																																																																																																																																			
Tubing	2 7/8	2.441				1,186.35	1,793.9	2,980.2																																																																																																																																																																																																																																																																																																			
Gas Lift Mandrel	2 7/8					4.05	2,980.2	2,984.3																																																																																																																																																																																																																																																																																																			
Tubing	2 7/8	2.441				907.04	2,984.3	3,891.3																																																																																																																																																																																																																																																																																																			
Gas Lift Mandrel	2 7/8					4.05	3,891.3	3,895.3																																																																																																																																																																																																																																																																																																			
Tubing	2 7/8	2.441				653.71	3,895.3	4,549.1																																																																																																																																																																																																																																																																																																			
Gas Lift Mandrel	2 7/8					4.05	4,549.1	4,553.1																																																																																																																																																																																																																																																																																																			
Tubing	2 7/8	2.441				563.83	4,553.1	5,116.9																																																																																																																																																																																																																																																																																																			
Gas Lift Mandrel	2 7/8					4.05	5,116.9	5,121.0																																																																																																																																																																																																																																																																																																			
Tubing	2 7/8	2.441				30.94	5,121.0	5,151.9																																																																																																																																																																																																																																																																																																			
Cup Seating Nipple	2 7/8					1.10	5,151.9	5,153.0																																																																																																																																																																																																																																																																																																			
Cross Over 2-7/8" x 2-3/8"	2 7/8					0.50	5,153.0	5,153.5																																																																																																																																																																																																																																																																																																			
Tubing	2 3/8	1.995				690.80	5,153.5	5,844.3																																																																																																																																																																																																																																																																																																			
Gas Lift Mandrel	2 3/8					4.05	5,844.3	5,848.4																																																																																																																																																																																																																																																																																																			
Tubing	2 3/8	1.995				65.78	5,848.4	5,914.2																																																																																																																																																																																																																																																																																																			
On-Off Tool	2 3/8					0.50	5,914.2	5,914.7																																																																																																																																																																																																																																																																																																			
Packer	7					10.00	5,914.7	5,924.7																																																																																																																																																																																																																																																																																																			
Rod Description	Run Date	Pull Date																																																																																																																																																																																																																																																																																																									
Set Depth (ftKB)	Comment	Run Date	Pull Date																																																																																																																																																																																																																																																																																																								
Item Des	OD (in)	Len (ft)	Top (ftKB)	Btm (ftKB)																																																																																																																																																																																																																																																																																																							
Des	OD (in)	Run Date	Pull Date	Top (ftKB)	Btm (ftKB)																																																																																																																																																																																																																																																																																																						
CFP	4	3/7/2014	3/29/2014	6,370.0	6,372.0																																																																																																																																																																																																																																																																																																						
CFP	4	3/7/2014	3/29/2014	6,445.0	6,447.0																																																																																																																																																																																																																																																																																																						
CFP	4	3/7/2014	3/29/2014	6,550.0	6,552.0																																																																																																																																																																																																																																																																																																						
CFP	4	3/7/2014	3/29/2014	6,712.0	6,714.0																																																																																																																																																																																																																																																																																																						
CFP	4	3/7/2014	3/29/2014	6,873.0	6,875.0																																																																																																																																																																																																																																																																																																						
CFP	4	3/6/2014	3/29/2014	7,040.0	7,042.0																																																																																																																																																																																																																																																																																																						
CFP	4	3/6/2014	3/29/2014	7,196.0	7,198.0																																																																																																																																																																																																																																																																																																						
CFP	4	3/6/2014	3/30/2014	7,358.0	7,360.0																																																																																																																																																																																																																																																																																																						
CFP	4	3/6/2014	3/30/2014	7,519.0	7,521.0																																																																																																																																																																																																																																																																																																						
CFP	4	3/6/2014	3/30/2014	7,681.0	7,683.0																																																																																																																																																																																																																																																																																																						
CFP	4	3/6/2014	3/30/2014	7,843.0	7,845.0																																																																																																																																																																																																																																																																																																						
CFP	4	3/6/2014	3/30/2014	8,004.0	8,006.0																																																																																																																																																																																																																																																																																																						
CFP	4	3/6/2014	3/30/2014	8,166.0	8,168.0																																																																																																																																																																																																																																																																																																						
CFP	4	3/5/2014	3/30/2014	8,320.0	8,322.0																																																																																																																																																																																																																																																																																																						
CFP	4	3/5/2014	3/30/2014	8,489.0	8,491.0																																																																																																																																																																																																																																																																																																						
CFP	4	3/5/2014	3/30/2014	8,651.0	8,653.0																																																																																																																																																																																																																																																																																																						
CFP	4	3/5/2014	3/30/2014	8,812.0	8,814.0																																																																																																																																																																																																																																																																																																						
CFP	4	3/5/2014	3/30/2014	8,973.0	8,975.0																																																																																																																																																																																																																																																																																																						
CFP	4	3/5/2014	3/30/2014	9,135.0	9,137.0																																																																																																																																																																																																																																																																																																						
CFP	4	3/5/2014	3/30/2014	9,297.0	9,297.0																																																																																																																																																																																																																																																																																																						
CFP	4	3/4/2014	3/30/2014	9,458.0	9,460.0																																																																																																																																																																																																																																																																																																						
CFP	4	3/4/2014	3/30/2014	9,617.0	9,619.0																																																																																																																																																																																																																																																																																																						
CFP	4	3/4/2014	3/30/2014	9,782.0	9,784.0																																																																																																																																																																																																																																																																																																						

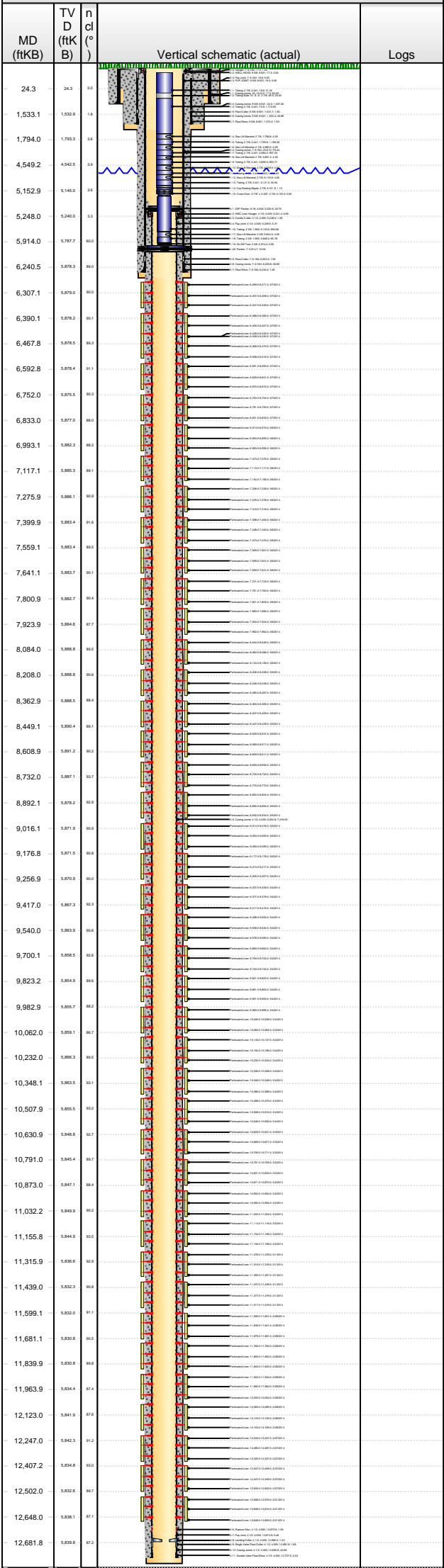


Lease Review All CR  
Well Name: RAZOR 21C-2806B

API Number 051233784000	WPC ID 1CO076967	Well Permit Number	Field Name DJ Horizontal Niobrara	County Weld	State CO
Well Configuration Type Lateral/Horizontal	Orig KB Elv (ft) 4,861.30	Ground Elevation (ft) 4,844.00	Casing Flange Elevation (ft)	Tubing Head Elevation (ft)	Total Depth (ftKB) 12,740.0
Original Spud Date 11/17/2013	Completion Date 3/7/2014	Asset Group Redtail Asset Group	Responsible Engineer Andrew Fish	N/S Dist (ft) 405.0	N/S Ref FNL
				E/W Dist (ft) 1,979.0	E/W Ref FWL
Lot	Quarter 1 NE	Quarter 2 NW	Quarter 3	Quarter 4	Section 21
			Section Suffix	Section Type	Township 10 N
					Range 58 W
					Meridian 6TH

Lateral/Horizontal - Original Hole, 5/20/2014 11:05:28 AM

Other In Hole



Des	OD (in)	Run Date	Pull Date	Top (ftKB)	Btm (ftKB)
CFP	4	3/4/2014	3/30/2014	9,943.0	9,945.0
CFP	4	3/4/2014	3/30/2014	10,102.0	10,104.0
CFP	4	3/4/2014	3/30/2014	10,261.0	10,263.0
CFP	4	3/4/2014	3/30/2014	10,428.0	10,430.0
CFP	4	3/4/2014	3/30/2014	10,589.0	10,591.0
CFP	4	3/3/2014	3/30/2014	10,746.0	10,748.0
CFP	4	3/2/2014	3/30/2014	10,913.0	10,915.0
CFP	4	3/2/2014	3/30/2014	11,074.0	11,076.0
CFP	4	3/2/2014	3/30/2014	11,236.0	11,238.0
CFP	4	3/1/2014	3/30/2014	11,397.0	11,399.0
CFP	4	3/1/2014	3/30/2014	11,550.0	11,552.0
CFP	4	2/28/2014	3/30/2014	11,720.0	11,722.0
CFP	4	2/28/2014	3/30/2014	11,882.0	11,884.0
CFP	4	2/28/2014	3/30/2014	12,044.0	12,046.0
CFP	4	2/28/2014	3/30/2014	12,205.0	12,207.0
CFP	4	2/27/2014	3/30/2014	12,367.0	12,369.0
CFP	4	2/27/2014	3/30/2014	12,527.0	12,529.0

Bottom Hole Cores

Date	Core #	Top (ftKB)	Btm (ftKB)	Recov (ft)