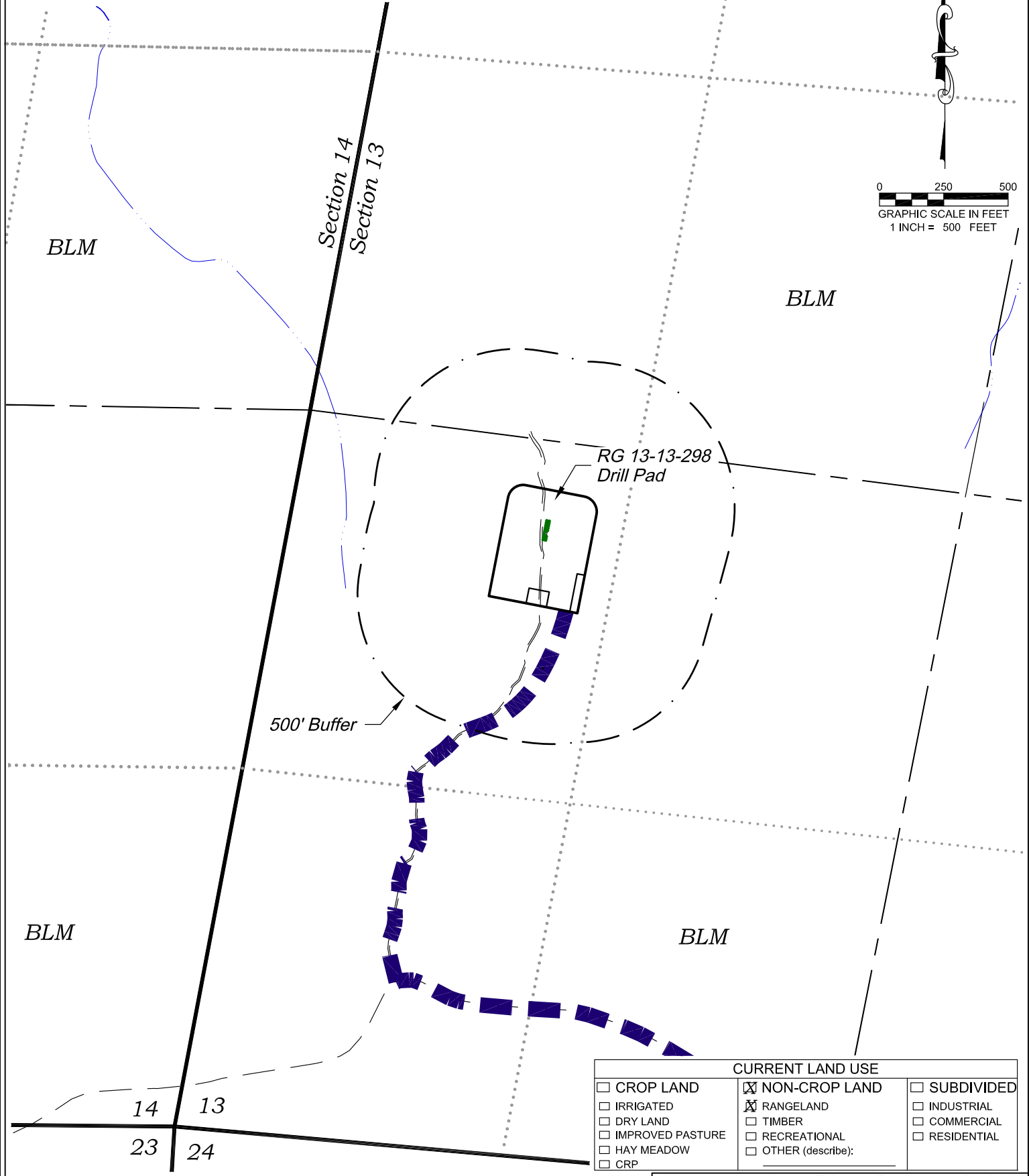
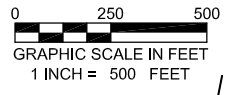


Section 13
T. 2 S., R. 98 W.
6th. P.M.



CURRENT LAND USE		
<input type="checkbox"/> CROP LAND	<input checked="" type="checkbox"/> NON-CROP LAND	<input type="checkbox"/> SUBDIVIDED
<input type="checkbox"/> IRRIGATED	<input checked="" type="checkbox"/> RANGELAND	<input type="checkbox"/> INDUSTRIAL
<input type="checkbox"/> DRY LAND	<input type="checkbox"/> TIMBER	<input type="checkbox"/> COMMERCIAL
<input type="checkbox"/> IMPROVED PASTURE	<input type="checkbox"/> RECREATIONAL	<input type="checkbox"/> RESIDENTIAL
<input type="checkbox"/> HAY MEADOW	<input type="checkbox"/> OTHER (describe):	
<input type="checkbox"/> CRP		

14 13
23 24

136 East Third Street
Rifle, Colorado 81650
Ph. (970) 625-2720
Fax (970) 625-2773



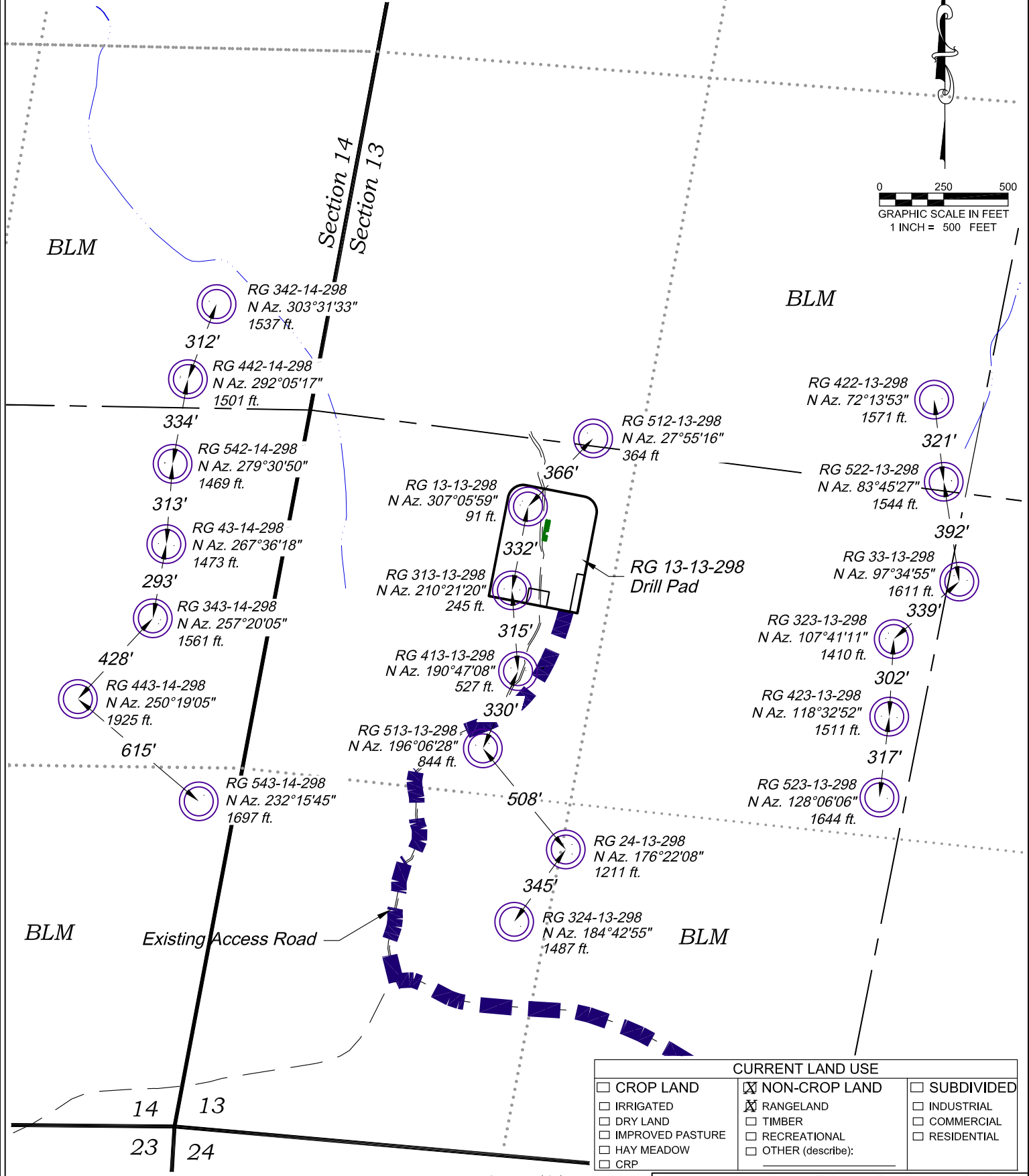
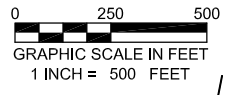
SCALE: 1" = 500'
DATE: 2/27/14
PLAT: 6 of 7
PROJECT: Highlands
DFT: cws

Construction Plan Prepared for:
WPXENERGY WPX Energy Rocky Mountain, LLC

RG 13-13-298 Drill Pad - Plat 6
LOCATION MAP

K:\2010 HIGHLANDS CENTRAL\RG 13-13-298\RG 13-13-298.dwg, 2/27/2014 9:50:28 AM

Section 13
T. 2 S., R. 98 W.
6th. P.M.



CURRENT LAND USE		
<input type="checkbox"/> CROP LAND	<input checked="" type="checkbox"/> NON-CROP LAND	<input type="checkbox"/> SUBDIVIDED
<input type="checkbox"/> IRRIGATED	<input checked="" type="checkbox"/> RANGELAND	<input type="checkbox"/> INDUSTRIAL
<input type="checkbox"/> DRY LAND	<input type="checkbox"/> TIMBER	<input type="checkbox"/> COMMERCIAL
<input type="checkbox"/> IMPROVED PASTURE	<input type="checkbox"/> RECREATIONAL	<input type="checkbox"/> RESIDENTIAL
<input type="checkbox"/> HAY MEADOW	<input type="checkbox"/> OTHER (describe):	
<input type="checkbox"/> CRP		

REVISED: 4/2/14

136 East Third Street
Rifle, Colorado 81650
Ph. (970) 625-2720
Fax (970) 625-2773

BOOKCLIFF
Survey Services, Inc.

SCALE:	1" = 500'
DATE:	2/27/14
PLAT:	6A of 7
PROJECT:	Highlands
DFT:	cws

Construction Plan Prepared for:
WPX ENERGY WPX Energy Rocky Mountain, LLC

RG 13-13-298 Drill Pad - Plat 6A
LOCATION MAP SUPPLEMENT

K:\2010 HIGHLANDS CENTRAL\RG 13-13-298\RG 13-13-298.DWG, 4/2/2014 1:40:46 PM

Section 13
T. 2 S., R. 98 W.
6th. P.M.

Visible Improvements to Well Head (ft.)

<i>Description</i>	<i>Building</i>	<i>Building Unit</i>	<i>High Occu. Building</i>	<i>DOAA</i>	<i>Public Road</i>	<i>Above Ground Utility</i>	<i>Railroad</i>	<i>Property Line</i>
RG 13-13-298	>5280	>5280	>5280	>5280	>5280	>5280	>5280	01° 4442
RG 342-14-298	>5280	>5280	>5280	>5280	>5280	>5280	>5280	01° 4449
RG 442-14-298	>5280	>5280	>5280	>5280	>5280	>5280	>5280	01° 4457
RG 542-14-298	>5280	>5280	>5280	>5280	>5280	>5280	>5280	01° 4464
RG 43-14-298	>5280	>5280	>5280	>5280	>5280	>5280	>5280	01° 4471
RG 343-14-298	>5280	>5280	>5280	>5280	>5280	>5280	>5280	01° 4479
RG 443-14-298	>5280	>5280	>5280	>5280	>5280	>5280	>5280	01° 4486
RG 543-14-298	>5280	>5280	>5280	>5280	>5280	>5280	>5280	01° 4494
RG 313-13-298	>5280	>5280	>5280	>5280	>5280	>5280	>5280	01° 4501
RG 413-13-298	>5280	>5280	>5280	>5280	>5280	>5280	>5280	01° 4508
RG 513-13-298	>5280	>5280	>5280	>5280	>5280	>5280	>5280	01° 4516
RG 512-13-298	>5280	>5280	>5280	>5280	>5280	>5280	>5280	01° 4443
RG 422-13-298	>5280	>5280	>5280	>5280	>5280	>5280	>5280	01° 4451
RG 522-13-298	>5280	>5280	>5280	>5280	>5280	>5280	>5280	01° 4458
RG 33-13-298	>5280	>5280	>5280	>5280	>5280	>5280	>5280	01° 4466
RG 323-13-298	>5280	>5280	>5280	>5280	>5280	>5280	>5280	01° 4473
RG 423-13-298	>5280	>5280	>5280	>5280	>5280	>5280	>5280	01° 4480
RG 523-13-298	>5280	>5280	>5280	>5280	>5280	>5280	>5280	01° 4503
RG 24-13-298	>5280	>5280	>5280	>5280	>5280	>5280	>5280	01° 4510
RG 324-13-298	>5280	>5280	>5280	>5280	>5280	>5280	>5280	01° 4517

Production Equipment

Seperators	>5280	>5280	>5280	>5280	>5280	>5280	>5280	01° 4645
Tanks	>5280	>5280	>5280	>5280	>5280	>5280	>5280	01° 4705

136 East Third Street
Rifle, Colorado 81650
Ph. (970) 625-2720
Fax (970) 625-2773



SCALE: 1" = 500'
DATE: 2/27/14
PLAT: 6B of 7
PROJECT: Highlands
DFT: cws

Construction Plan Prepared for:
WPXENERGY WPX Energy Rocky Mountain, LLC

RG 13-13-298 Drill Pad - Plat 6B
LOCATION TABLE