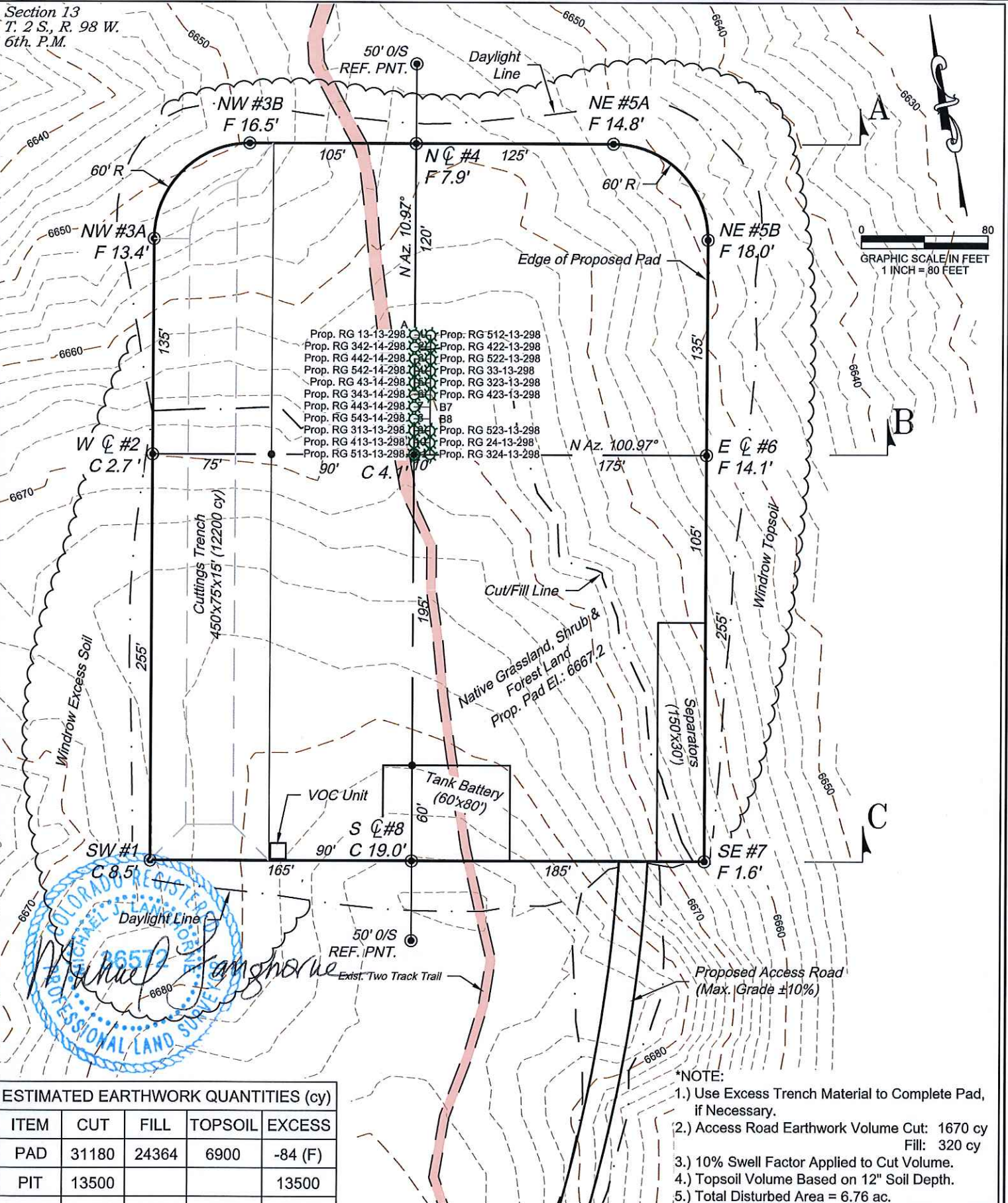


Section 13
T. 2 S., R. 98 W.
6th. P.M.

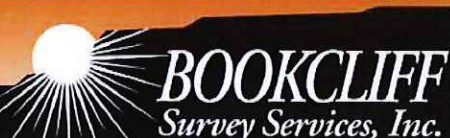


ESTIMATED EARTHWORK QUANTITIES (cy)

ITEM	CUT	FILL	TOPSOIL	EXCESS
PAD	31180	24364	6900	-84 (F)
PIT	13500			13500
TOTALS	44680	24364	6900	13416

- *NOTE:**
- 1.) Use Excess Trench Material to Complete Pad, if Necessary.
 - 2.) Access Road Earthwork Volume Cut: 1670 cy
Fill: 320 cy
 - 3.) 10% Swell Factor Applied to Cut Volume.
 - 4.) Topsoil Volume Based on 12" Soil Depth.
 - 5.) Total Disturbed Area = 6.76 ac.

136 East Third Street
Rifle, Colorado 81650
Ph. (970) 625-2720
Fax (970) 625-2773



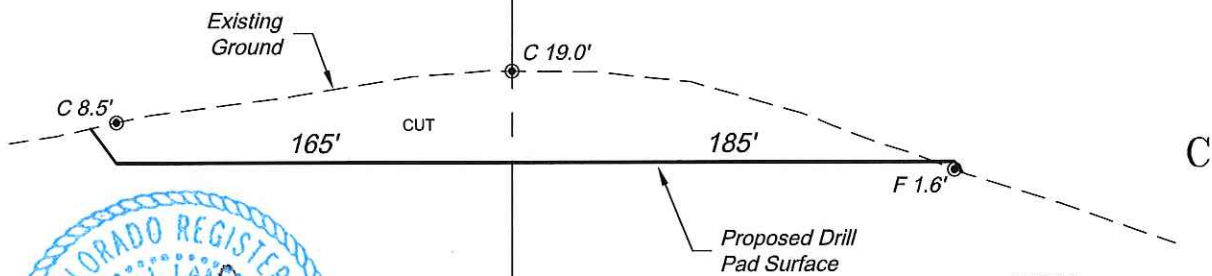
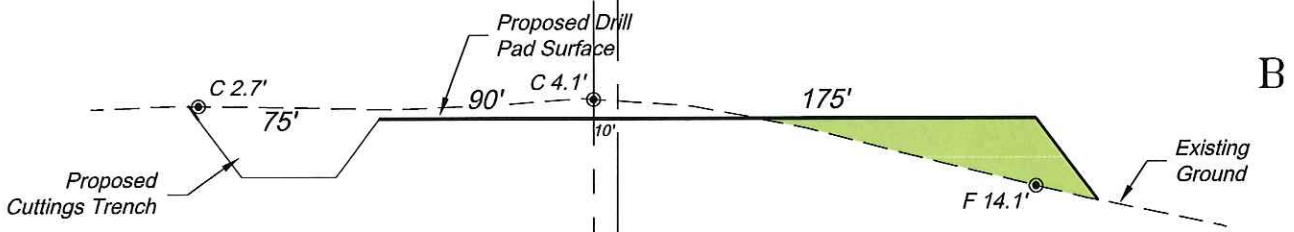
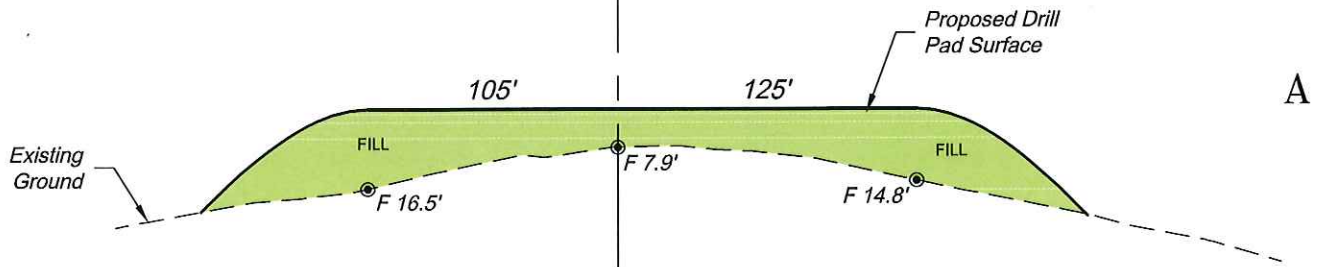
SCALE: 1" = 80'
DATE: 2/27/14
PLAT: 2 of 7
PROJECT: Highlands
DFT: CWS

Construction Plan Prepared for:
WPXENERGY WPX Energy Rocky Mountain, LLC
RG 13-13-298 Drill Pad - Plat 2
CONSTRUCTION LAYOUT

K:\2010 HIGHLANDS CENTRAL\RG 13-13-298.dwg, 7/22/2014 11:52:14 AM

Section 13
 T. 2 S., R. 98 W.
 6th. P.M.

WELLS



Michael J. Langhorne
 COLORADO REGISTERED
 MICHAEL J. LANGHORNE
 35572
 PROFESSIONAL LAND SURVEYOR

*NOTE:
 CUT SLOPE: 1.5:1
 FILL SLOPE: 1.5:1,
 OTHERWISE NOTED.

SCALE: Horiz.: 1" = 80'
 Vert.: 1" = 40'

136 East Third Street
 Rifle, Colorado 81650
 Ph. (970) 625-2720
 Fax (970) 625-2773



SCALE: As Noted
 DATE: 2/27/14
 PLAT: 3 of 7
 PROJECT: Highlands
 DFT: cws

Construction Plan Prepared for:
WPXENERGY WPX Energy Rocky Mountain, LLC
 RG 13-13-298 Drill Pad - Plat 3
CONSTRUCTION LAYOUT
CROSS SECTIONS

K:\2010 HIGHLANDS CENTRAL\RG 13-13-298\RG 13-13-298.dwg, 2/27/2014 9:50:19 AM