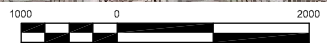
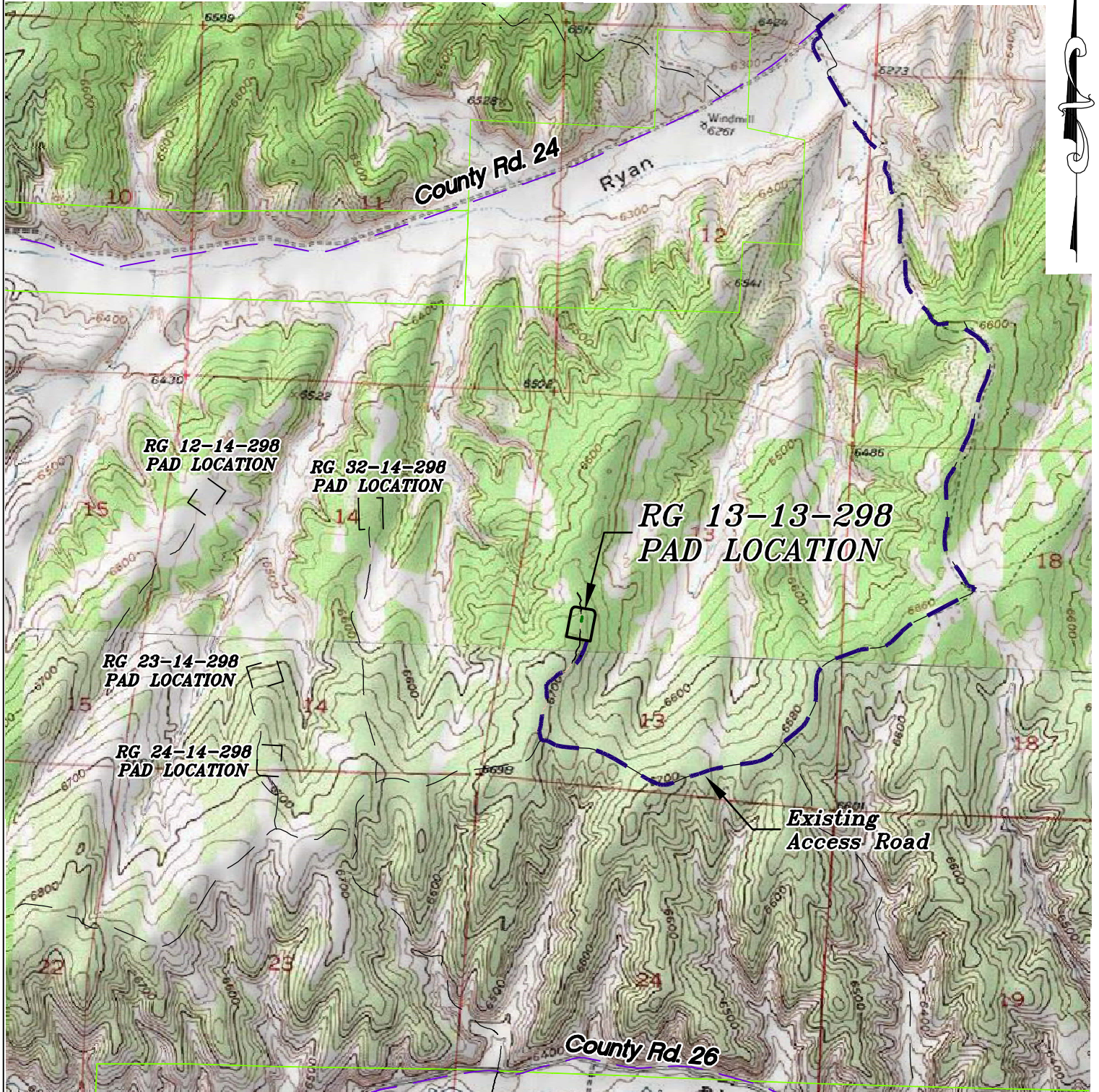


Section 13
T. 2 S., R. 98 W.
6th. P.M.



GRAPHIC SCALE IN FEET
1 INCH = 2000 FEET

ACCESS DESCRIPTION:

FROM THE INTERSECTION OF STATE HIGHWAY 64 AND RIO BLANCO COUNTY ROAD 5 PROCEED SOUTHERLY ALONG COUNTY ROAD 5 ±14.5 MILES TO THE INTERSECTION WITH COUNTY ROAD 24 (Mile Marker 26.8), PROCEED WESTERLY ALONG COUNTY ROAD 24 ±2.9 MILES TO THE INTERSECTION WITH DIRT/GRAVEL ROAD, PROCEED LEFT IN A SOUTHERLY TO WESTERLY DIRECTION ±3.2 MILES TO AN INTERSECTION WITH A DIRT/GRAVEL ROAD, PROCEED RIGHT IN A NORTHERLY DIRECTION ±3.2 MILES TO THE RGU 13-13-298 DRILL PAD LOCATION, AS SHOWN HEREON.

136 East Third Street
Rifle, Colorado 81650
Ph. (970) 625-2720
Fax (970) 625-2773



SCALE: 1" = 2000'
DATE: 2/27/14
PLAT: 5 of 7
PROJECT: Highlands
DFT: cws

Construction Plan Prepared for:
WPXENERGY WPX Energy Rocky Mountain, LLC

*RG 13-13-298 Drill Pad - Plat 5
ACCESS ROAD & TOPO MAP*