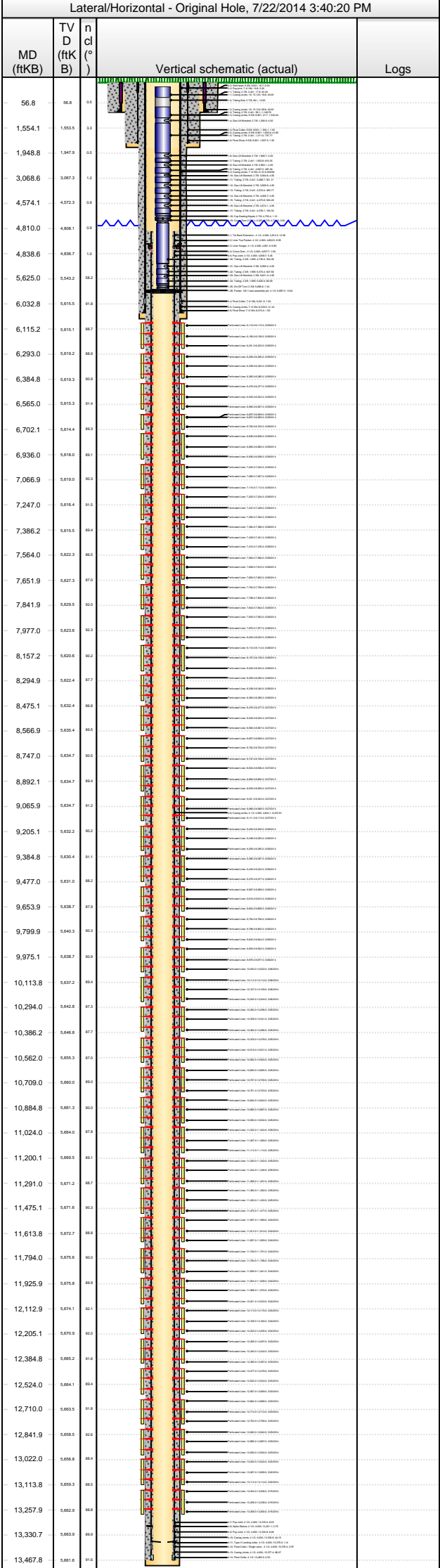


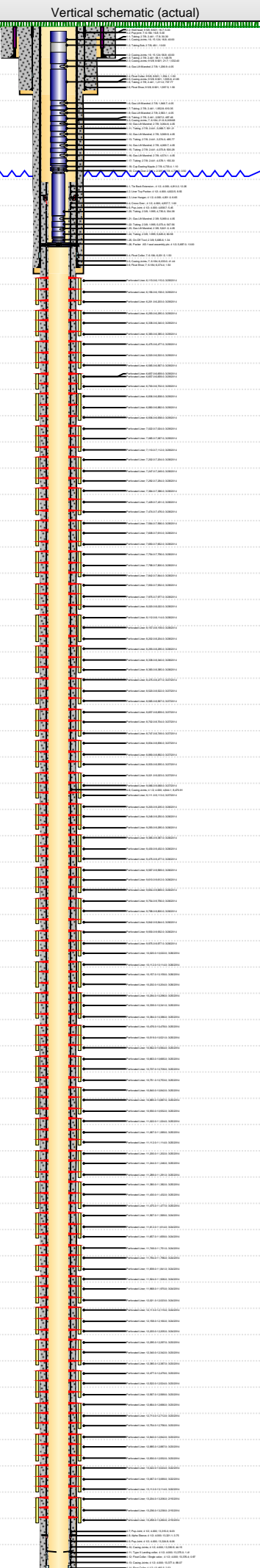


Lease Review All CR  
Well Name: RAZOR 271-2215A

API Number 051233795300	WPC ID 1CO076906	Well Permit Number	Field Name DJ Horizontal Niobrara	County Weld	State CO
Well Configuration Type Lateral/Horizontal	Orig KB Elv (ft) 4,773.30	Ground Elevation (ft) 4,756.50	Casing Flange Elevation (ft)	Tubing Head Elevation (ft)	Total Depth (ftKB) 13,478.0
Original Spud Date 12/23/2013	Completion Date 4/16/2014	Asset Group Redtail Asset Group	Responsible Engineer Andrew Fish	N/S Dist (ft) 2,394.0	N/S Ref FSL
				E/W Dist (ft) 659.0	E/W Ref FEL
Lot	Quarter 1 NE	Quarter 2 SE	Quarter 3	Quarter 4	Section 27
			Section Suffix	Section Type	Township 10 N
				Township N/S Dir	Range 58 W
				Range E/W Dir	Meridian



Wellbore Sections					
Wellbore Name	Start Date	Size (in)	Act Top (ftKB)	Act Btm (ftKB)	
Original Hole	12/13/2013	20	16.8	96.8	
Original Hole	12/23/2013	13 1/2	96.8	1,620.0	
Original Hole	12/25/2013	8 3/4	1,620.0	6,090.0	
Original Hole	12/29/2013	6	6,090.0	13,478.0	
Conductor Pipe, 96.8ftKB					
OD (in)	Wt (lb/ft)	Grade	Top (ftKB)	Btm (ftKB)	Item Des
16	75.00	J-55	16.8	56.8	Casing Joints
16	75.00	J-55	56.8	96.8	Casing Joints
Surface Csg, 1,599.0ftKB					
OD (in)	Wt (lb/ft)	Grade	Top (ftKB)	Btm (ftKB)	Item Des
9 5/8	36.00	K-55	16.7	16.7	Landing Joint
9 5/8	36.00	K-55	16.7	21.7	Well head
9 5/8	36.00	K-55	21.7	1,554.2	1,532.40 Casing Joints
9 5/8	36.00	K-55	1,554.2	1,555.7	1.50 Float Collar
9 5/8	36.00	K-55	1,555.7	1,597.5	41.85 Casing Joints
9 5/8	36.00	K-55	1,597.5	1,599.0	1.50 Float Shoe
Intermediate Csg, 6,075.9ftKB					
OD (in)	Wt (lb/ft)	Grade	Top (ftKB)	Btm (ftKB)	Item Des
7	29.00	L-80	16.8	16.8	Landing Joint
7	29.00	L-80	16.8	21.8	5.00 Pup joint
7	29.00	L-80	21.8	6,031.5	6,009.68 Casing Joints
7	29.00	L-80	6,031.5	6,033.0	1.50 Float Collar
7	29.00	L-80	6,033.0	6,074.4	41.44 Casing Joints
7	29.00	L-80	6,074.4	6,075.9	1.50 Float Shoe
Liner, 13,468.0ftKB					
OD (in)	Wt (lb/ft)	Grade	Top (ftKB)	Btm (ftKB)	Item Des
4 1/2	11.60	L-80	4,810.2	4,822.5	12.26 Tie Back Extension
4 1/2	11.60	L-80	4,822.5	4,831.0	8.55 Liner Top Packer
4 1/2	11.60	L-80	4,831.0	4,837.7	6.65 Liner Hanger
4 1/2	11.60	L-80	4,837.7	4,838.7	1.00 Cross Over
4 1/2	11.60	L-80	4,838.7	4,844.1	5.45 Pup Joint
4 1/2	11.60	L-80	4,844.1	13,315.0	8,470.91 Casing Joints
4 1/2	11.60	L-80	13,315.0	13,321.1	6.03 Pup Joint
4 1/2	11.60	L-80	13,321.1	13,324.8	3.75 Alpha Sleeve
4 1/2	11.60	L-80	13,324.8	13,330.9	6.06 Pup Joint
4 1/2	11.60	L-80	13,330.9	13,375.0	44.15 Casing Joints
4 1/2	11.60	L-80	13,375.0	13,376.4	1.41 Type II Landing collar
4 1/2	11.60	L-80	13,376.4	13,377.4	0.97 Float Collar / Single valve
4 1/2	11.60	L-80	13,377.4	13,465.5	88.07 Casing Joints
4 1/2	11.60	L-80	13,465.5	13,468.0	2.53 Float Collar
Cement Stages					
Des	Pump Start Date	Drill Out Date	Top (ftKB)	Btm (ftKB)	Top Meas Meth
Conductor Cement	9/13/2013		16.8	96.8	Returns to Surface
Surface Casing Cement	12/24/2013		16.8	1,599.0	Returns to Surface
Intermediate Casing Cement	12/28/2013		16.8	6,075.9	Returns to Surface
Liner Cement	1/3/2014		4,810.2	13,468.0	Volume Calculations
Perforations					
Type of Hole	Date	Top (ftKB)	Btm (ftKB)	Zone	
Perforated Liner	3/29/2014	6,113.0	6,115.0	Niobrara, Original Hole	
Perforated Liner	3/29/2014	6,156.0	6,158.0	Niobrara, Original Hole	
Perforated Liner	3/29/2014	6,201.0	6,203.0	Niobrara, Original Hole	
Perforated Liner	3/29/2014	6,293.0	6,295.0	Niobrara, Original Hole	
Perforated Liner	3/29/2014	6,338.0	6,340.0	Niobrara, Original Hole	
Perforated Liner	3/29/2014	6,383.0	6,385.0	Niobrara, Original Hole	
Perforated Liner	3/29/2014	6,475.0	6,477.0	Niobrara, Original Hole	
Perforated Liner	3/29/2014	6,520.0	6,522.0	Niobrara, Original Hole	
Perforated Liner	3/29/2014	6,565.0	6,567.0	Niobrara, Original Hole	
Perforated Liner	3/29/2014	6,657.0	6,659.0	Niobrara, Original Hole	
Perforated Liner	3/29/2014	6,657.0	6,659.0	Niobrara, Original Hole	

Lease Review All CR													
Well Name: RAZOR 271-2215A													
API Number 051233795300		WPC ID 1CO076906		Well Permit Number		Field Name DJ Horizontal Niobrara		County Weld		State CO			
Well Configuration Type Lateral/Horizontal		Orig KB Elv (ft) 4,773.30		Ground Elevation (ft) 4,756.50		Casing Flange Elevation (ft)		Tubing Head Elevation (ft)		Total Depth (ftKB) 13,478.0			
Original Spud Date 12/23/2013		Completion Date 4/16/2014		Asset Group Redtail Asset Group		Responsible Engineer Andrew Fish		N/S Dist (ft) 2,394.0		N/S Ref FSL		E/W Dist (ft) 659.0 E/W Ref FEL	
Lot		Quarter 1 NE	Quarter 2 SE	Quarter 3	Quarter 4	Section 27	Section Suffix	Section Type	Township 10 N	Township N/S Dir	Range 58 W	Range E/W Dir	Meridian
Lateral/Horizontal - Original Hole, 7/22/2014 3:40:22 PM						Perforations							
MD (ftKB)		TV D (ftK B)	n cl (° B)	Vertical schematic (actual)		Logs		Type of Hole	Date	Top (ftKB)	Btm (ftKB)	Zone	
								Perforated Liner	3/29/2014	6,700.0	6,702.0	Niobrara, Original Hole	
								Perforated Liner	3/29/2014	6,836.0	6,838.0	Niobrara, Original Hole	
56.8	56.8	1.5	1.553.5					Perforated Liner	3/29/2014	6,880.0	6,882.0	Niobrara, Original Hole	
1,554.1	1,553.5	1.5	1,948.8					Perforated Liner	3/29/2014	6,936.0	6,938.0	Niobrara, Original Hole	
1,948.8	1,947.9	1.5	3,068.6					Perforated Liner	3/29/2014	7,022.0	7,024.0	Niobrara, Original Hole	
3,068.6	3,067.3	1.5	4,574.1					Perforated Liner	3/29/2014	7,065.0	7,067.0	Niobrara, Original Hole	
4,574.1	4,572.3	1.8	4,810.0					Perforated Liner	3/29/2014	7,110.0	7,112.0	Niobrara, Original Hole	
4,810.0	4,808.1	1.9	4,838.6					Perforated Liner	3/28/2014	7,202.0	7,204.0	Niobrara, Original Hole	
4,838.6	4,836.7	1.9	5,625.0					Perforated Liner	3/28/2014	7,247.0	7,249.0	Niobrara, Original Hole	
5,625.0	5,643.2	58.2	6,032.8					Perforated Liner	3/28/2014	7,292.0	7,294.0	Niobrara, Original Hole	
6,032.8	5,815.5	51.8	6,115.2					Perforated Liner	3/28/2014	7,384.0	7,386.0	Niobrara, Original Hole	
6,115.2	5,815.1	88.7	6,293.0					Perforated Liner	3/28/2014	7,429.0	7,431.0	Niobrara, Original Hole	
6,293.0	5,819.2	88.9	6,384.8					Perforated Liner	3/28/2014	7,474.0	7,476.0	Niobrara, Original Hole	
6,384.8	5,819.3	88.8	6,565.0					Perforated Liner	3/28/2014	7,564.0	7,566.0	Niobrara, Original Hole	
6,565.0	5,815.3	91.4	6,702.1					Perforated Liner	3/28/2014	7,608.0	7,610.0	Niobrara, Original Hole	
6,702.1	5,814.4	88.3	6,936.0					Perforated Liner	3/28/2014	7,650.0	7,652.0	Niobrara, Original Hole	
6,936.0	5,818.0	86.1	7,066.9					Perforated Liner	3/28/2014	7,754.0	7,756.0	Niobrara, Original Hole	
7,066.9	5,819.0	90.3	7,247.0					Perforated Liner	3/28/2014	7,798.0	7,800.0	Niobrara, Original Hole	
7,247.0	5,816.4	91.5	7,386.2					Perforated Liner	3/28/2014	7,842.0	7,844.0	Niobrara, Original Hole	
7,386.2	5,816.5	88.4	7,564.0					Perforated Liner	3/28/2014	7,930.0	7,932.0	Niobrara, Original Hole	
7,564.0	5,822.3	86.5	7,651.9					Perforated Liner	3/28/2014	7,975.0	7,977.0	Niobrara, Original Hole	
7,651.9	5,827.3	87.0	7,841.9					Perforated Liner	3/28/2014	8,020.0	8,022.0	Niobrara, Original Hole	
7,841.9	5,829.5	92.0	7,977.0					Perforated Liner	3/28/2014	8,112.0	8,114.0	Niobrara, Original Hole	
7,977.0	5,823.6	90.3	8,157.2					Perforated Liner	3/28/2014	8,157.0	8,159.0	Niobrara, Original Hole	
8,157.2	5,820.6	89.2	8,294.9					Perforated Liner	3/28/2014	8,202.0	8,204.0	Niobrara, Original Hole	
8,294.9	5,822.4	87.7	8,475.1					Perforated Liner	3/28/2014	8,293.0	8,295.0	Niobrara, Original Hole	
8,475.1	5,824.4	88.8	8,566.9					Perforated Liner	3/28/2014	8,338.0	8,340.0	Niobrara, Original Hole	
8,566.9	5,825.4	88.5	8,747.0					Perforated Liner	3/28/2014	8,383.0	8,385.0	Niobrara, Original Hole	
8,747.0	5,824.7	86.5	8,892.1					Perforated Liner	3/28/2014	8,475.0	8,477.0	Niobrara, Original Hole	
8,892.1	5,834.7	86.4	9,065.9					Perforated Liner	3/28/2014	8,520.0	8,522.0	Niobrara, Original Hole	
9,065.9	5,834.7	91.2	9,205.1					Perforated Liner	3/28/2014	8,565.0	8,567.0	Niobrara, Original Hole	
9,205.1	5,832.2	90.2	9,384.8					Perforated Liner	3/28/2014	8,657.0	8,659.0	Niobrara, Original Hole	
9,384.8	5,820.4	91.1	9,477.0					Perforated Liner	3/28/2014	8,702.0	8,704.0	Niobrara, Original Hole	
9,477.0	5,831.0	89.2	9,653.9					Perforated Liner	3/28/2014	8,747.0	8,749.0	Niobrara, Original Hole	
9,653.9	5,838.7	87.9	9,799.9					Perforated Liner	3/28/2014	8,834.0	8,836.0	Niobrara, Original Hole	
9,799.9	5,840.3	90.3	9,975.1					Perforated Liner	3/28/2014	8,890.0	8,892.0	Niobrara, Original Hole	
9,975.1	5,838.7	90.8	10,113.8					Perforated Liner	3/28/2014	8,933.0	8,935.0	Niobrara, Original Hole	
10,113.8	5,837.2	89.4	10,294.0					Perforated Liner	3/28/2014	9,021.0	9,023.0	Niobrara, Original Hole	
10,294.0	5,842.8	87.3	10,386.2					Perforated Liner	3/28/2014	9,066.0	9,068.0	Niobrara, Original Hole	
10,386.2	5,846.8	87.7	10,562.0					Perforated Liner	3/28/2014				
10,562.0	5,855.3	92.0	10,709.0					Perforated Liner	3/28/2014				
10,709.0	5,860.0	89.0	10,884.8					Perforated Liner	3/28/2014				
10,884.8	5,861.3	90.0	11,024.0					Perforated Liner	3/27/2014				
11,024.0	5,864.0	87.8	11,200.1					Perforated Liner	3/27/2014				
11,200.1	5,869.5	88.1	11,291.0					Perforated Liner	3/27/2014				
11,291.0	5,871.2	88.7	11,475.1					Perforated Liner	3/27/2014				
11,475.1	5,871.6	90.3	11,613.8					Perforated Liner	3/27/2014				
11,613.8	5,872.7	88.8	11,794.0					Perforated Liner	3/27/2014				
11,794.0	5,875.6	90.0	11,925.9					Perforated Liner	3/27/2014				
11,925.9	5,870.8	88.9	12,112.9					Perforated Liner	3/27/2014				
12,112.9	5,874.1	92.1	12,205.1					Perforated Liner	3/27/2014				
12,205.1	5,870.9	92.0	12,384.8					Perforated Liner	3/27/2014				
12,384.8	5,865.2	91.6	12,524.0					Perforated Liner	3/27/2014				
12,524.0	5,864.1	89.4	12,710.0					Perforated Liner	3/27/2014				
12,710.0	5,863.5	91.8	12,841.9					Perforated Liner	3/27/2014				
12,841.9	5,858.5	92.6	13,022.0					Perforated Liner	3/27/2014				
13,022.0	5,858.8	88.4	13,113.8					Perforated Liner	3/27/2014				
13,113.8	5,859.3	88.5	13,257.9					Perforated Liner	3/27/2014				
13,257.9	5,862.9	88.8	13,330.7					Perforated Liner	3/27/2014				
13,330.7	5,860.9	88.9	13,467.8					Perforated Liner	3/27/2014				
13,467.8	5,861.6	91.6											

Page 2/7

Report Printed: 7/22/2014

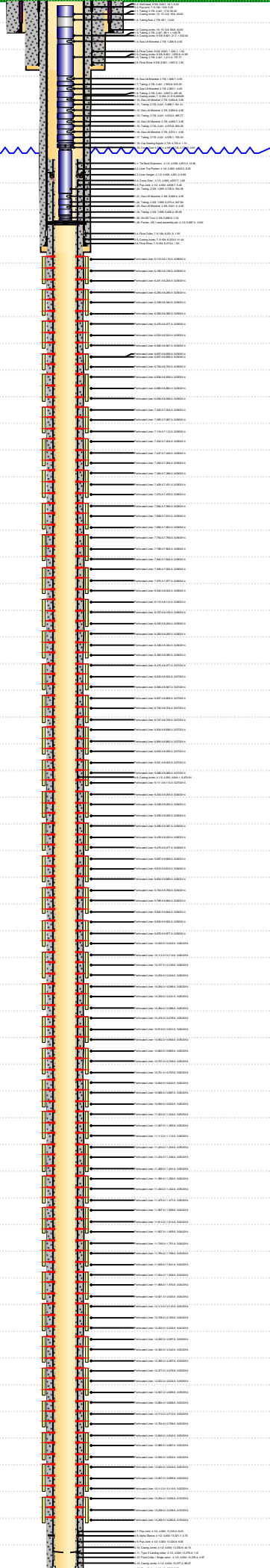
Lease Review All CR																																																																																																																																																																																																																																																																																																																																																																																																																																																																																																																				
Well Name: RAZOR 271-2215A																																																																																																																																																																																																																																																																																																																																																																																																																																																																																																																				
API Number 051233795300			WPC ID 1CO076906			Well Permit Number			Field Name DJ Horizontal Niobrara			County Weld		State CO																																																																																																																																																																																																																																																																																																																																																																																																																																																																																																						
Well Configuration Type Lateral/Horizontal			Orig KB Elv (ft) 4,773.30			Ground Elevation (ft) 4,756.50		Casing Flange Elevation (ft)		Tubing Head Elevation (ft)		Total Depth (ftKB) 13,478.0																																																																																																																																																																																																																																																																																																																																																																																																																																																																																																								
Original Spud Date 12/23/2013		Completion Date 4/16/2014		Asset Group Redtail Asset Group			Responsible Engineer Andrew Fish			N/S Dist (ft) 2,394.0		N/S Ref FSL	E/W Dist (ft) 659.0	E/W Ref FEL																																																																																																																																																																																																																																																																																																																																																																																																																																																																																																						
Lot		Quarter 1 NE	Quarter 2 SE	Quarter 3	Quarter 4	Section 27	Section Suffix	Section Type	Township 10 N		Township N/S Dir	Range 58	Range E/W Dir W	Meridian																																																																																																																																																																																																																																																																																																																																																																																																																																																																																																						
Lateral/Horizontal - Original Hole, 7/22/2014 3:40:23 PM																																																																																																																																																																																																																																																																																																																																																																																																																																																																																																																				
Perforations																																																																																																																																																																																																																																																																																																																																																																																																																																																																																																																				
<table><tr><th>MD (ftKB)</th><th>TV D (ftKB)</th><th>ncl (°)</th><th>Vertical schematic (actual)</th><th>Logs</th><th>Type of Hole</th><th>Date</th><th>Top (ftKB)</th><th>Btm (ftKB)</th><th>Zone</th></tr><tr><td>56.8</td><td>56.8</td><td>15</td><td rowspan="40"></td><td rowspan="40"></td><td>Perforated Liner</td><td>3/27/2014</td><td>9,111.0</td><td>9,113.0</td><td>Niobrara, Original Hole</td></tr><tr><td>1,554.1</td><td>1,553.5</td><td>13</td><td>Perforated Liner</td><td>3/26/2014</td><td>9,203.0</td><td>9,205.0</td><td>Niobrara, Original Hole</td></tr><tr><td>1,948.8</td><td>1,947.9</td><td>15</td><td>Perforated Liner</td><td>3/26/2014</td><td>9,248.0</td><td>9,250.0</td><td>Niobrara, Original Hole</td></tr><tr><td>3,068.6</td><td>3,067.3</td><td>12</td><td>Perforated Liner</td><td>3/26/2014</td><td>9,293.0</td><td>9,295.0</td><td>Niobrara, Original Hole</td></tr><tr><td>4,574.1</td><td>4,572.3</td><td>18</td><td>Perforated Liner</td><td>3/26/2014</td><td>9,385.0</td><td>9,387.0</td><td>Niobrara, Original Hole</td></tr><tr><td>4,810.0</td><td>4,808.1</td><td>19</td><td>Perforated Liner</td><td>3/26/2014</td><td>9,430.0</td><td>9,432.0</td><td>Niobrara, Original Hole</td></tr><tr><td>4,838.6</td><td>4,836.7</td><td>10</td><td>Perforated Liner</td><td>3/26/2014</td><td>9,475.0</td><td>9,477.0</td><td>Niobrara, Original Hole</td></tr><tr><td>5,625.0</td><td>5,643.2</td><td>58.2</td><td>Perforated Liner</td><td>3/26/2014</td><td>9,567.0</td><td>9,569.0</td><td>Niobrara, Original Hole</td></tr><tr><td>6,032.8</td><td>5,815.5</td><td>91.8</td><td>Perforated Liner</td><td>3/26/2014</td><td>9,610.0</td><td>9,612.0</td><td>Niobrara, Original Hole</td></tr><tr><td>6,115.2</td><td>5,815.1</td><td>88.7</td><td>Perforated Liner</td><td>3/26/2014</td><td>9,654.0</td><td>9,669.0</td><td>Niobrara, Original Hole</td></tr><tr><td>6,293.0</td><td>5,819.2</td><td>88.9</td><td>Perforated Liner</td><td>3/26/2014</td><td>9,754.0</td><td>9,756.0</td><td>Niobrara, Original Hole</td></tr><tr><td>6,384.8</td><td>5,819.3</td><td>88.8</td><td>Perforated Liner</td><td>3/26/2014</td><td>9,798.0</td><td>9,800.0</td><td>Niobrara, Original Hole</td></tr><tr><td>6,565.0</td><td>5,815.3</td><td>91.4</td><td>Perforated Liner</td><td>3/26/2014</td><td>9,842.0</td><td>9,844.0</td><td>Niobrara, Original Hole</td></tr><tr><td>6,702.1</td><td>5,814.4</td><td>88.3</td><td>Perforated Liner</td><td>3/26/2014</td><td>9,930.0</td><td>9,932.0</td><td>Niobrara, Original Hole</td></tr><tr><td>6,936.0</td><td>5,818.0</td><td>86.1</td><td>Perforated Liner</td><td>3/26/2014</td><td>9,975.0</td><td>9,977.0</td><td>Niobrara, Original Hole</td></tr><tr><td>7,066.9</td><td>5,819.0</td><td>90.3</td><td>Perforated Liner</td><td>3/26/2014</td><td>10,020.0</td><td>10,022.0</td><td>Niobrara, Original Hole</td></tr><tr><td>7,247.0</td><td>5,816.4</td><td>91.5</td><td>Perforated Liner</td><td>3/26/2014</td><td>10,112.0</td><td>10,114.0</td><td>Niobrara, Original Hole</td></tr><tr><td>7,386.2</td><td>5,816.5</td><td>88.4</td><td>Perforated Liner</td><td>3/26/2014</td><td>10,157.0</td><td>10,159.0</td><td>Niobrara, Original Hole</td></tr><tr><td>7,564.0</td><td>5,822.3</td><td>86.5</td><td>Perforated Liner</td><td>3/26/2014</td><td>10,202.0</td><td>10,204.0</td><td>Niobrara, Original Hole</td></tr><tr><td>7,651.9</td><td>5,827.3</td><td>87.0</td><td>Perforated Liner</td><td>3/26/2014</td><td>10,294.0</td><td>10,296.0</td><td>Niobrara, Original Hole</td></tr><tr><td>7,841.9</td><td>5,829.5</td><td>92.0</td><td>Perforated Liner</td><td>3/26/2014</td><td>10,339.0</td><td>10,341.0</td><td>Niobrara, Original Hole</td></tr><tr><td>7,977.0</td><td>5,823.6</td><td>90.3</td><td>Perforated Liner</td><td>3/26/2014</td><td>10,384.0</td><td>10,386.0</td><td>Niobrara, Original Hole</td></tr><tr><td>8,157.2</td><td>5,820.6</td><td>89.2</td><td>Perforated Liner</td><td>3/26/2014</td><td>10,476.0</td><td>10,478.0</td><td>Niobrara, Original Hole</td></tr><tr><td>8,294.9</td><td>5,822.4</td><td>87.7</td><td>Perforated Liner</td><td>3/26/2014</td><td>10,519.0</td><td>10,521.0</td><td>Niobrara, Original Hole</td></tr><tr><td>8,475.1</td><td>5,824.4</td><td>88.8</td><td>Perforated Liner</td><td>3/26/2014</td><td>10,562.0</td><td>10,564.0</td><td>Niobrara, Original Hole</td></tr><tr><td>8,566.9</td><td>5,825.4</td><td>88.5</td><td>Perforated Liner</td><td>3/26/2014</td><td>10,663.0</td><td>10,665.0</td><td>Niobrara, Original Hole</td></tr><tr><td>8,747.0</td><td>5,824.7</td><td>86.5</td><td>Perforated Liner</td><td>3/26/2014</td><td>10,707.0</td><td>10,709.0</td><td>Niobrara, Original Hole</td></tr><tr><td>8,892.1</td><td>5,834.7</td><td>86.4</td><td>Perforated Liner</td><td>3/26/2014</td><td>10,751.0</td><td>10,753.0</td><td>Niobrara, Original Hole</td></tr><tr><td>9,065.9</td><td>5,834.7</td><td>91.2</td><td>Perforated Liner</td><td>3/26/2014</td><td>10,840.0</td><td>10,842.0</td><td>Niobrara, Original Hole</td></tr><tr><td>9,205.1</td><td>5,832.2</td><td>90.2</td><td>Perforated Liner</td><td>3/26/2014</td><td>10,885.0</td><td>10,887.0</td><td>Niobrara, Original Hole</td></tr><tr><td>9,384.8</td><td>5,820.4</td><td>91.1</td><td>Perforated Liner</td><td>3/26/2014</td><td>10,930.0</td><td>10,932.0</td><td>Niobrara, Original Hole</td></tr><tr><td>9,477.0</td><td>5,831.0</td><td>88.2</td><td>Perforated Liner</td><td>3/26/2014</td><td>11,022.0</td><td>11,024.0</td><td>Niobrara, Original Hole</td></tr><tr><td>9,653.9</td><td>5,838.7</td><td>87.9</td><td>Perforated Liner</td><td>3/26/2014</td><td>11,067.0</td><td>11,069.0</td><td>Niobrara, Original Hole</td></tr><tr><td>9,799.9</td><td>5,840.3</td><td>90.3</td><td>Perforated Liner</td><td>3/26/2014</td><td>11,112.0</td><td>11,114.0</td><td>Niobrara, Original Hole</td></tr><tr><td>9,975.1</td><td>5,838.7</td><td>90.8</td><td>Perforated Liner</td><td>3/26/2014</td><td>11,244.0</td><td>11,246.0</td><td>Niobrara, Original Hole</td></tr><tr><td>10,113.8</td><td>5,837.2</td><td>88.4</td><td>Perforated Liner</td><td>3/26/2014</td><td>11,289.0</td><td>11,291.0</td><td>Niobrara, Original Hole</td></tr><tr><td>10,294.0</td><td>5,842.8</td><td>87.3</td><td>Perforated Liner</td><td>3/26/2014</td><td>11,380.0</td><td>11,382.0</td><td>Niobrara, Original Hole</td></tr><tr><td>10,386.2</td><td>5,846.8</td><td>87.7</td><td>Perforated Liner</td><td>3/26/2014</td><td>11,430.0</td><td>11,432.0</td><td>Niobrara, Original Hole</td></tr><tr><td>10,562.0</td><td>5,855.3</td><td>92.0</td><td>Perforated Liner</td><td>3/26/2014</td><td></td><td></td><td></td></tr><tr><td>10,709.0</td><td>5,860.0</td><td>88.0</td><td>Perforated Liner</td><td>3/26/2014</td><td></td><td></td><td></td></tr><tr><td>10,884.8</td><td>5,861.3</td><td>90.0</td><td>Perforated Liner</td><td>3/26/2014</td><td></td><td></td><td></td></tr><tr><td>11,024.0</td><td>5,864.0</td><td>87.8</td><td>Perforated Liner</td><td>3/26/2014</td><td></td><td></td><td></td></tr><tr><td>11,200.1</td><td>5,869.5</td><td>88.1</td><td>Perforated Liner</td><td>3/26/2014</td><td></td><td></td><td></td></tr><tr><td>11,291.0</td><td>5,871.2</td><td>88.7</td><td>Perforated Liner</td><td>3/26/2014</td><td></td><td></td><td></td></tr><tr><td>11,475.1</td><td>5,871.6</td><td>90.3</td><td>Perforated Liner</td><td>3/26/2014</td><td></td><td></td><td></td></tr><tr><td>11,613.8</td><td>5,872.7</td><td>88.8</td><td>Perforated Liner</td><td>3/26/2014</td><td></td><td></td><td></td></tr><tr><td>11,794.0</td><td>5,875.6</td><td>90.0</td><td>Perforated Liner</td><td>3/26/2014</td><td></td><td></td><td></td></tr><tr><td>11,925.9</td><td>5,870.8</td><td>88.8</td><td>Perforated Liner</td><td>3/26/2014</td><td></td><td></td><td></td></tr><tr><td>12,112.9</td><td>5,874.1</td><td>92.1</td><td>Perforated Liner</td><td>3/26/2014</td><td></td><td></td><td></td></tr><tr><td>12,205.1</td><td>5,870.9</td><td>92.0</td><td>Perforated Liner</td><td>3/26/2014</td><td></td><td></td><td></td></tr><tr><td>12,384.8</td><td>5,885.2</td><td>91.6</td><td>Perforated Liner</td><td>3/26/2014</td><td></td><td></td><td></td></tr><tr><td>12,524.0</td><td>5,884.1</td><td>88.4</td><td>Perforated Liner</td><td>3/26/2014</td><td></td><td></td><td></td></tr><tr><td>12,710.0</td><td>5,883.5</td><td>91.8</td><td>Perforated Liner</td><td>3/26/2014</td><td></td><td></td><td></td></tr><tr><td>12,841.9</td><td>5,858.5</td><td>92.6</td><td>Perforated Liner</td><td>3/26/2014</td><td></td><td></td><td></td></tr><tr><td>13,022.0</td><td>5,858.8</td><td>88.4</td><td>Perforated Liner</td><td>3/26/2014</td><td></td><td></td><td></td></tr><tr><td>13,113.8</td><td>5,859.3</td><td>88.5</td><td>Perforated Liner</td><td>3/26/2014</td><td></td><td></td><td></td></tr><tr><td>13,257.9</td><td>5,882.9</td><td>88.8</td><td>Perforated Liner</td><td>3/26/2014</td><td></td><td></td><td></td></tr><tr><td>13,330.7</td><td>5,880.9</td><td>88.9</td><td>Perforated Liner</td><td>3/26/2014</td><td></td><td></td><td></td></tr><tr><td>13,467.8</td><td>5,881.6</td><td>91.6</td><td>Perforated Liner</td><td>3/26/2014</td><td></td><td></td><td></td></tr></table>																	MD (ftKB)	TV D (ftKB)	ncl (°)	Vertical schematic (actual)	Logs	Type of Hole	Date	Top (ftKB)	Btm (ftKB)	Zone	56.8	56.8	15			Perforated Liner	3/27/2014	9,111.0	9,113.0	Niobrara, Original Hole	1,554.1	1,553.5	13	Perforated Liner	3/26/2014	9,203.0	9,205.0	Niobrara, Original Hole	1,948.8	1,947.9	15	Perforated Liner	3/26/2014	9,248.0	9,250.0	Niobrara, Original Hole	3,068.6	3,067.3	12	Perforated Liner	3/26/2014	9,293.0	9,295.0	Niobrara, Original Hole	4,574.1	4,572.3	18	Perforated Liner	3/26/2014	9,385.0	9,387.0	Niobrara, Original Hole	4,810.0	4,808.1	19	Perforated Liner	3/26/2014	9,430.0	9,432.0	Niobrara, Original Hole	4,838.6	4,836.7	10	Perforated Liner	3/26/2014	9,475.0	9,477.0	Niobrara, Original Hole	5,625.0	5,643.2	58.2	Perforated Liner	3/26/2014	9,567.0	9,569.0	Niobrara, Original Hole	6,032.8	5,815.5	91.8	Perforated Liner	3/26/2014	9,610.0	9,612.0	Niobrara, Original Hole	6,115.2	5,815.1	88.7	Perforated Liner	3/26/2014	9,654.0	9,669.0	Niobrara, Original Hole	6,293.0	5,819.2	88.9	Perforated Liner	3/26/2014	9,754.0	9,756.0	Niobrara, Original Hole	6,384.8	5,819.3	88.8	Perforated Liner	3/26/2014	9,798.0	9,800.0	Niobrara, Original Hole	6,565.0	5,815.3	91.4	Perforated Liner	3/26/2014	9,842.0	9,844.0	Niobrara, Original Hole	6,702.1	5,814.4	88.3	Perforated Liner	3/26/2014	9,930.0	9,932.0	Niobrara, Original Hole	6,936.0	5,818.0	86.1	Perforated Liner	3/26/2014	9,975.0	9,977.0	Niobrara, Original Hole	7,066.9	5,819.0	90.3	Perforated Liner	3/26/2014	10,020.0	10,022.0	Niobrara, Original Hole	7,247.0	5,816.4	91.5	Perforated Liner	3/26/2014	10,112.0	10,114.0	Niobrara, Original Hole	7,386.2	5,816.5	88.4	Perforated Liner	3/26/2014	10,157.0	10,159.0	Niobrara, Original Hole	7,564.0	5,822.3	86.5	Perforated Liner	3/26/2014	10,202.0	10,204.0	Niobrara, Original Hole	7,651.9	5,827.3	87.0	Perforated Liner	3/26/2014	10,294.0	10,296.0	Niobrara, Original Hole	7,841.9	5,829.5	92.0	Perforated Liner	3/26/2014	10,339.0	10,341.0	Niobrara, Original Hole	7,977.0	5,823.6	90.3	Perforated Liner	3/26/2014	10,384.0	10,386.0	Niobrara, Original Hole	8,157.2	5,820.6	89.2	Perforated Liner	3/26/2014	10,476.0	10,478.0	Niobrara, Original Hole	8,294.9	5,822.4	87.7	Perforated Liner	3/26/2014	10,519.0	10,521.0	Niobrara, Original Hole	8,475.1	5,824.4	88.8	Perforated Liner	3/26/2014	10,562.0	10,564.0	Niobrara, Original Hole	8,566.9	5,825.4	88.5	Perforated Liner	3/26/2014	10,663.0	10,665.0	Niobrara, Original Hole	8,747.0	5,824.7	86.5	Perforated Liner	3/26/2014	10,707.0	10,709.0	Niobrara, Original Hole	8,892.1	5,834.7	86.4	Perforated Liner	3/26/2014	10,751.0	10,753.0	Niobrara, Original Hole	9,065.9	5,834.7	91.2	Perforated Liner	3/26/2014	10,840.0	10,842.0	Niobrara, Original Hole	9,205.1	5,832.2	90.2	Perforated Liner	3/26/2014	10,885.0	10,887.0	Niobrara, Original Hole	9,384.8	5,820.4	91.1	Perforated Liner	3/26/2014	10,930.0	10,932.0	Niobrara, Original Hole	9,477.0	5,831.0	88.2	Perforated Liner	3/26/2014	11,022.0	11,024.0	Niobrara, Original Hole	9,653.9	5,838.7	87.9	Perforated Liner	3/26/2014	11,067.0	11,069.0	Niobrara, Original Hole	9,799.9	5,840.3	90.3	Perforated Liner	3/26/2014	11,112.0	11,114.0	Niobrara, Original Hole	9,975.1	5,838.7	90.8	Perforated Liner	3/26/2014	11,244.0	11,246.0	Niobrara, Original Hole	10,113.8	5,837.2	88.4	Perforated Liner	3/26/2014	11,289.0	11,291.0	Niobrara, Original Hole	10,294.0	5,842.8	87.3	Perforated Liner	3/26/2014	11,380.0	11,382.0	Niobrara, Original Hole	10,386.2	5,846.8	87.7	Perforated Liner	3/26/2014	11,430.0	11,432.0	Niobrara, Original Hole	10,562.0	5,855.3	92.0	Perforated Liner	3/26/2014				10,709.0	5,860.0	88.0	Perforated Liner	3/26/2014				10,884.8	5,861.3	90.0	Perforated Liner	3/26/2014				11,024.0	5,864.0	87.8	Perforated Liner	3/26/2014				11,200.1	5,869.5	88.1	Perforated Liner	3/26/2014				11,291.0	5,871.2	88.7	Perforated Liner	3/26/2014				11,475.1	5,871.6	90.3	Perforated Liner	3/26/2014				11,613.8	5,872.7	88.8	Perforated Liner	3/26/2014				11,794.0	5,875.6	90.0	Perforated Liner	3/26/2014				11,925.9	5,870.8	88.8	Perforated Liner	3/26/2014				12,112.9	5,874.1	92.1	Perforated Liner	3/26/2014				12,205.1	5,870.9	92.0	Perforated Liner	3/26/2014				12,384.8	5,885.2	91.6	Perforated Liner	3/26/2014				12,524.0	5,884.1	88.4	Perforated Liner	3/26/2014				12,710.0	5,883.5	91.8	Perforated Liner	3/26/2014				12,841.9	5,858.5	92.6	Perforated Liner	3/26/2014				13,022.0	5,858.8	88.4	Perforated Liner	3/26/2014				13,113.8	5,859.3	88.5	Perforated Liner	3/26/2014				13,257.9	5,882.9	88.8	Perforated Liner	3/26/2014				13,330.7	5,880.9	88.9	Perforated Liner	3/26/2014				13,467.8	5,881.6	91.6	Perforated Liner	3/26/2014			
MD (ftKB)	TV D (ftKB)	ncl (°)	Vertical schematic (actual)	Logs	Type of Hole	Date	Top (ftKB)	Btm (ftKB)	Zone																																																																																																																																																																																																																																																																																																																																																																																																																																																																																																											
56.8	56.8	15			Perforated Liner	3/27/2014	9,111.0	9,113.0	Niobrara, Original Hole																																																																																																																																																																																																																																																																																																																																																																																																																																																																																																											
1,554.1	1,553.5	13			Perforated Liner	3/26/2014	9,203.0	9,205.0	Niobrara, Original Hole																																																																																																																																																																																																																																																																																																																																																																																																																																																																																																											
1,948.8	1,947.9	15			Perforated Liner	3/26/2014	9,248.0	9,250.0	Niobrara, Original Hole																																																																																																																																																																																																																																																																																																																																																																																																																																																																																																											
3,068.6	3,067.3	12			Perforated Liner	3/26/2014	9,293.0	9,295.0	Niobrara, Original Hole																																																																																																																																																																																																																																																																																																																																																																																																																																																																																																											
4,574.1	4,572.3	18			Perforated Liner	3/26/2014	9,385.0	9,387.0	Niobrara, Original Hole																																																																																																																																																																																																																																																																																																																																																																																																																																																																																																											
4,810.0	4,808.1	19			Perforated Liner	3/26/2014	9,430.0	9,432.0	Niobrara, Original Hole																																																																																																																																																																																																																																																																																																																																																																																																																																																																																																											
4,838.6	4,836.7	10			Perforated Liner	3/26/2014	9,475.0	9,477.0	Niobrara, Original Hole																																																																																																																																																																																																																																																																																																																																																																																																																																																																																																											
5,625.0	5,643.2	58.2			Perforated Liner	3/26/2014	9,567.0	9,569.0	Niobrara, Original Hole																																																																																																																																																																																																																																																																																																																																																																																																																																																																																																											
6,032.8	5,815.5	91.8			Perforated Liner	3/26/2014	9,610.0	9,612.0	Niobrara, Original Hole																																																																																																																																																																																																																																																																																																																																																																																																																																																																																																											
6,115.2	5,815.1	88.7			Perforated Liner	3/26/2014	9,654.0	9,669.0	Niobrara, Original Hole																																																																																																																																																																																																																																																																																																																																																																																																																																																																																																											
6,293.0	5,819.2	88.9			Perforated Liner	3/26/2014	9,754.0	9,756.0	Niobrara, Original Hole																																																																																																																																																																																																																																																																																																																																																																																																																																																																																																											
6,384.8	5,819.3	88.8			Perforated Liner	3/26/2014	9,798.0	9,800.0	Niobrara, Original Hole																																																																																																																																																																																																																																																																																																																																																																																																																																																																																																											
6,565.0	5,815.3	91.4			Perforated Liner	3/26/2014	9,842.0	9,844.0	Niobrara, Original Hole																																																																																																																																																																																																																																																																																																																																																																																																																																																																																																											
6,702.1	5,814.4	88.3			Perforated Liner	3/26/2014	9,930.0	9,932.0	Niobrara, Original Hole																																																																																																																																																																																																																																																																																																																																																																																																																																																																																																											
6,936.0	5,818.0	86.1			Perforated Liner	3/26/2014	9,975.0	9,977.0	Niobrara, Original Hole																																																																																																																																																																																																																																																																																																																																																																																																																																																																																																											
7,066.9	5,819.0	90.3			Perforated Liner	3/26/2014	10,020.0	10,022.0	Niobrara, Original Hole																																																																																																																																																																																																																																																																																																																																																																																																																																																																																																											
7,247.0	5,816.4	91.5			Perforated Liner	3/26/2014	10,112.0	10,114.0	Niobrara, Original Hole																																																																																																																																																																																																																																																																																																																																																																																																																																																																																																											
7,386.2	5,816.5	88.4			Perforated Liner	3/26/2014	10,157.0	10,159.0	Niobrara, Original Hole																																																																																																																																																																																																																																																																																																																																																																																																																																																																																																											
7,564.0	5,822.3	86.5			Perforated Liner	3/26/2014	10,202.0	10,204.0	Niobrara, Original Hole																																																																																																																																																																																																																																																																																																																																																																																																																																																																																																											
7,651.9	5,827.3	87.0			Perforated Liner	3/26/2014	10,294.0	10,296.0	Niobrara, Original Hole																																																																																																																																																																																																																																																																																																																																																																																																																																																																																																											
7,841.9	5,829.5	92.0			Perforated Liner	3/26/2014	10,339.0	10,341.0	Niobrara, Original Hole																																																																																																																																																																																																																																																																																																																																																																																																																																																																																																											
7,977.0	5,823.6	90.3			Perforated Liner	3/26/2014	10,384.0	10,386.0	Niobrara, Original Hole																																																																																																																																																																																																																																																																																																																																																																																																																																																																																																											
8,157.2	5,820.6	89.2			Perforated Liner	3/26/2014	10,476.0	10,478.0	Niobrara, Original Hole																																																																																																																																																																																																																																																																																																																																																																																																																																																																																																											
8,294.9	5,822.4	87.7			Perforated Liner	3/26/2014	10,519.0	10,521.0	Niobrara, Original Hole																																																																																																																																																																																																																																																																																																																																																																																																																																																																																																											
8,475.1	5,824.4	88.8			Perforated Liner	3/26/2014	10,562.0	10,564.0	Niobrara, Original Hole																																																																																																																																																																																																																																																																																																																																																																																																																																																																																																											
8,566.9	5,825.4	88.5			Perforated Liner	3/26/2014	10,663.0	10,665.0	Niobrara, Original Hole																																																																																																																																																																																																																																																																																																																																																																																																																																																																																																											
8,747.0	5,824.7	86.5			Perforated Liner	3/26/2014	10,707.0	10,709.0	Niobrara, Original Hole																																																																																																																																																																																																																																																																																																																																																																																																																																																																																																											
8,892.1	5,834.7	86.4			Perforated Liner	3/26/2014	10,751.0	10,753.0	Niobrara, Original Hole																																																																																																																																																																																																																																																																																																																																																																																																																																																																																																											
9,065.9	5,834.7	91.2			Perforated Liner	3/26/2014	10,840.0	10,842.0	Niobrara, Original Hole																																																																																																																																																																																																																																																																																																																																																																																																																																																																																																											
9,205.1	5,832.2	90.2			Perforated Liner	3/26/2014	10,885.0	10,887.0	Niobrara, Original Hole																																																																																																																																																																																																																																																																																																																																																																																																																																																																																																											
9,384.8	5,820.4	91.1			Perforated Liner	3/26/2014	10,930.0	10,932.0	Niobrara, Original Hole																																																																																																																																																																																																																																																																																																																																																																																																																																																																																																											
9,477.0	5,831.0	88.2			Perforated Liner	3/26/2014	11,022.0	11,024.0	Niobrara, Original Hole																																																																																																																																																																																																																																																																																																																																																																																																																																																																																																											
9,653.9	5,838.7	87.9			Perforated Liner	3/26/2014	11,067.0	11,069.0	Niobrara, Original Hole																																																																																																																																																																																																																																																																																																																																																																																																																																																																																																											
9,799.9	5,840.3	90.3			Perforated Liner	3/26/2014	11,112.0	11,114.0	Niobrara, Original Hole																																																																																																																																																																																																																																																																																																																																																																																																																																																																																																											
9,975.1	5,838.7	90.8			Perforated Liner	3/26/2014	11,244.0	11,246.0	Niobrara, Original Hole																																																																																																																																																																																																																																																																																																																																																																																																																																																																																																											
10,113.8	5,837.2	88.4			Perforated Liner	3/26/2014	11,289.0	11,291.0	Niobrara, Original Hole																																																																																																																																																																																																																																																																																																																																																																																																																																																																																																											
10,294.0	5,842.8	87.3			Perforated Liner	3/26/2014	11,380.0	11,382.0	Niobrara, Original Hole																																																																																																																																																																																																																																																																																																																																																																																																																																																																																																											
10,386.2	5,846.8	87.7			Perforated Liner	3/26/2014	11,430.0	11,432.0	Niobrara, Original Hole																																																																																																																																																																																																																																																																																																																																																																																																																																																																																																											
10,562.0	5,855.3	92.0			Perforated Liner	3/26/2014																																																																																																																																																																																																																																																																																																																																																																																																																																																																																																														
10,709.0	5,860.0	88.0			Perforated Liner	3/26/2014																																																																																																																																																																																																																																																																																																																																																																																																																																																																																																														
10,884.8	5,861.3	90.0	Perforated Liner	3/26/2014																																																																																																																																																																																																																																																																																																																																																																																																																																																																																																																
11,024.0	5,864.0	87.8	Perforated Liner	3/26/2014																																																																																																																																																																																																																																																																																																																																																																																																																																																																																																																
11,200.1	5,869.5	88.1	Perforated Liner	3/26/2014																																																																																																																																																																																																																																																																																																																																																																																																																																																																																																																
11,291.0	5,871.2	88.7	Perforated Liner	3/26/2014																																																																																																																																																																																																																																																																																																																																																																																																																																																																																																																
11,475.1	5,871.6	90.3	Perforated Liner	3/26/2014																																																																																																																																																																																																																																																																																																																																																																																																																																																																																																																
11,613.8	5,872.7	88.8	Perforated Liner	3/26/2014																																																																																																																																																																																																																																																																																																																																																																																																																																																																																																																
11,794.0	5,875.6	90.0	Perforated Liner	3/26/2014																																																																																																																																																																																																																																																																																																																																																																																																																																																																																																																
11,925.9	5,870.8	88.8	Perforated Liner	3/26/2014																																																																																																																																																																																																																																																																																																																																																																																																																																																																																																																
12,112.9	5,874.1	92.1	Perforated Liner	3/26/2014																																																																																																																																																																																																																																																																																																																																																																																																																																																																																																																
12,205.1	5,870.9	92.0	Perforated Liner	3/26/2014																																																																																																																																																																																																																																																																																																																																																																																																																																																																																																																
12,384.8	5,885.2	91.6	Perforated Liner	3/26/2014																																																																																																																																																																																																																																																																																																																																																																																																																																																																																																																
12,524.0	5,884.1	88.4	Perforated Liner	3/26/2014																																																																																																																																																																																																																																																																																																																																																																																																																																																																																																																
12,710.0	5,883.5	91.8	Perforated Liner	3/26/2014																																																																																																																																																																																																																																																																																																																																																																																																																																																																																																																
12,841.9	5,858.5	92.6	Perforated Liner	3/26/2014																																																																																																																																																																																																																																																																																																																																																																																																																																																																																																																
13,022.0	5,858.8	88.4	Perforated Liner	3/26/2014																																																																																																																																																																																																																																																																																																																																																																																																																																																																																																																
13,113.8	5,859.3	88.5	Perforated Liner	3/26/2014																																																																																																																																																																																																																																																																																																																																																																																																																																																																																																																
13,257.9	5,882.9	88.8	Perforated Liner	3/26/2014																																																																																																																																																																																																																																																																																																																																																																																																																																																																																																																
13,330.7	5,880.9	88.9	Perforated Liner	3/26/2014																																																																																																																																																																																																																																																																																																																																																																																																																																																																																																																
13,467.8	5,881.6	91.6	Perforated Liner	3/26/2014																																																																																																																																																																																																																																																																																																																																																																																																																																																																																																																

Page 3/7

Report Printed: 7/22/2014



Lease Review All CR															
Well Name: RAZOR 271-2215A															
API Number 051233795300			WPC ID 1CO076906			Well Permit Number			Field Name DJ Horizontal Niobrara			County Weld		State CO	
Well Configuration Type Lateral/Horizontal			Orig KB Elv (ft) 4,773.30			Ground Elevation (ft) 4,756.50			Casing Flange Elevation (ft)		Tubing Head Elevation (ft)		Total Depth (ftKB) 13,478.0		
Original Spud Date 12/23/2013		Completion Date 4/16/2014		Asset Group Redtail Asset Group			Responsible Engineer Andrew Fish			N/S Dist (ft) 2,394.0		N/S Ref FSL		E/W Dist (ft) 659.0	E/W Ref FEL
Lot		Quarter 1 NE	Quarter 2 SE	Quarter 3	Quarter 4	Section 27	Section Suffix	Section Type		Township 10	Township N/S Dir N	Range 58	Range E/W Dir W	Meridian	
Lateral/Horizontal - Original Hole, 7/22/2014 3:40:24 PM															
Perforations															

Lease Review All CR																
Well Name: RAZOR 271-2215A																
API Number 051233795300			WPC ID 1CO076906			Well Permit Number			Field Name DJ Horizontal Niobrara			County Weld		State CO		
Well Configuration Type Lateral/Horizontal			Orig KB Elv (ft) 4,773.30			Ground Elevation (ft) 4,756.50			Casing Flange Elevation (ft)		Tubing Head Elevation (ft)		Total Depth (ftKB) 13,478.0			
Original Spud Date 12/23/2013		Completion Date 4/16/2014		Asset Group Redtail Asset Group			Responsible Engineer Andrew Fish			N/S Dist (ft) 2,394.0		N/S Ref FSL		E/W Dist (ft) 659.0		E/W Ref FEL
Lot		Quarter 1 NE	Quarter 2 SE	Quarter 3	Quarter 4	Section 27	Section Suffix	Section Type		Township 10	Township N/S Dir N		Range 58	Range E/W Dir W		Meridian
Lateral/Horizontal - Original Hole, 7/22/2014 3:40:26 PM								Stim/Treat Stages								
MD (ftKB)	TV D (ftKB B)	n cl (° )	Vertical schematic (actual)				Logs	Stage Type	Start Date	Top (ftKB)	Btm (ftKB)	Stim/Treat Fluid			Vol Clean Pump (bbl)	
								34	3/28/2014	7,202.0	7,294.0	40/70# 8989, 20/40# 100211, Slick Water			2370.00	
56.8	56.8	05						33	3/28/2014	7,384.0	7,476.0	40/70# 8986, 20/40# 100614, Slick Water			2394.00	
1,554.1	1,553.5	13						32	3/28/2014	7,564.0	7,652.0	40/70# 12334, 20/40# 100590, Slick Water			2359.00	
1,948.8	1,947.9	05						31	3/28/2014	7,754.0	7,844.0	40/70# 9004, 20/40# 101929, Slick Water			2405.00	
3,068.6	3,067.3	12						30	3/28/2014	7,930.0	8,022.0	40/70# 9130, 20/40# 100360, Slick Water			2352.00	
4,574.1	4,572.3	09						29	3/28/2014	8,112.0	8,204.0	40/70# 8962, 20/40# 101791, Slick Water			2423.00	
4,810.0	4,808.1	04						28	3/27/2014	8,293.0	8,385.0	40/70# 9212, 20/40# 102488, Slick Water			2403.00	
4,838.6	4,836.7	10						27	3/27/2014	8,475.0	8,567.0	40/70# 9217,20/40# 102883, Slick Water			3209.00	
5,625.0	5,643.2	58.2						26	3/27/2014	8,657.0	8,749.0	40/70# 8999, 20/40# 100201, Slick Water			2392.00	
6,032.8	5,815.5	61.8						25	3/27/2014	8,834.0	8,935.0	40/70# 8900, 20/40# 107600, Slick Water			2436.00	
6,115.2	5,815.1	88.7						24	3/26/2014	9,021.0	9,113.0	40/70# 9430, 20/40# 103870, Slick Water			2594.00	
6,293.0	5,819.2	88.9						23	3/26/2014	9,203.0	9,295.0	40/70# 8852, 20/40# 102048, Slick Water			2416.00	
6,384.8	5,819.3	88.8						22	3/26/2014	9,385.0	9,477.0	40/70# 9007, 20/40# 101393, Slick Water			2427.00	
6,565.0	5,815.3	91.4						21	3/26/2014	9,567.0	9,669.0	40/70# 9011, 20/40# 93276, Slick Water			2364.00	
6,702.1	5,814.4	88.3						20	3/26/2014	9,754.0	9,844.0	40/70# 9008, 20/40# 100210, Slick Water			2394.00	
6,936.0	5,818.0	88.1						19	3/26/2014	9,930.0	10,022.0	40/70# 8990, 20/40# 100710, Slick Water			2408.00	
7,066.9	5,819.0	90.3						18	3/26/2014	10,112.0	10,204.0	40/70# 9072, 20/40# 98728, Slick Water			2437.00	
7,247.0	5,816.4	91.5						17	3/25/2014	10,294.0	10,386.0	40/70# 8922, 20/40# 99678, Slick Water			2499.00	
7,386.2	5,815.5	88.4						16	3/25/2014	10,476.0	10,564.0	40/70# 9066, 20/40# 97634,15%HCl# 24, Slick Water			2489.00	
7,564.0	5,822.3	88.5						15	3/25/2014	10,663.0	10,753.0	40/70# 8995, 20/40# 103005, Slick Water			2455.00	
7,651.9	5,827.3	87.0						14	3/25/2014	10,840.0	10,932.0	40/70# 8999, 20/40# 99505, 15%HCl# 24, Slick Water			2492.00	
7,841.9	5,829.5	92.0						13	3/25/2014	11,022.0	11,114.0	40/70# 8966, 20/40# 101097,15%HCl# 24, Slick Water			2481.00	
7,977.0	5,823.6	90.3						12	3/25/2014	11,200.0	11,291.0	40/70# 8993, 20/40# 100668,15%HCl#24, Slick Water			2462.00	
8,157.2	5,820.6	90.2						11	3/24/2014	11,380.0	11,477.0	40/70# 8966, 20/40# 99634, 15%HCl# 24, Slick Water			2493.00	
8,294.9	5,822.4	87.7						10	3/24/2014	11,567.0	11,659.0	40/70# 9061, 20/40# 100039, 15%HCl# 24, Slick Water			2475.00	
8,475.1	5,824.4	88.8						9	3/24/2014	11,749.0	11,841.0	40/70# 9067, 20/40# 100633, 15%HCl# 24, Slick Water			2527.00	
8,566.9	5,825.4	88.5						8	3/24/2014	11,924.0	12,023.0	40/70# 9007, 20/40# 100773,15%HCl# 24, Slick Water			2889.00	
8,747.0	5,824.7	88.4						7	3/23/2014	12,113.0	12,205.0	40/70# 9141, 20/40# 99059, 15%HCl# 24, Slick Water			2612.00	
8,892.1	5,824.7	88.4						6	3/23/2014	12,295.0	12,387.0	40/70# 9118, 20/40# 97682, 15%HCl# 24, Slick Water			2447.00	
9,065.9	5,824.7	91.2						5	3/23/2014	12,477.0	12,569.0	40/70# 9027, 20/40# 99973, 15%HCl# 24, Slick Water			2452.00	
9,205.1	5,832.2	90.2						4	3/23/2014	12,664.0	12,756.0	40/70# 9015, 20/40# 99285, 15%HCl# 24, Slick Water			2604.00	
9,384.8	5,830.4	91.1						3	3/23/2014	12,840.0	12,932.0	40/70# 8955, 20/40# 94845, 15%HCl# 24, Slick Water			2592.00	
9,477.0	5,831.0	88.2						2	3/22/2014	13,022.0	13,114.0	40/70# 9015, 20/40# 101085, 15%HCl# 24, Slick Water			2565.00	
9,653.9	5,838.7	87.9						1	3/22/2014	13,204.0	13,260.0	40/70# 9377, 20/40# 97323, 15%HCl# 24, Slick Water			2580.00	
9,799.9	5,840.3	90.3						Tubing - Production set at 5,697.0ftKB on 4/16/2014 12:19								
9,975.1	5,838.7	90.9						Set Depth (ftKB)	Comment			Run Date		Pull Date		
10,113.8	5,837.2	88.4						5,697.0				4/16/2014				
10,294.0	5,842.8	87.3														
10,386.2	5,846.8	87.7														
10,562.0	5,853.2	92.0														
10,709.0	5,860.0	88.0														
10,884.8	5,861.3	90.0														
11,024.0	5,864.0	87.8														
11,200.1	5,869.5	88.1														
11,291.0	5,871.2	88.7														
11,475.1	5,871.6	90.3														
11,613.8	5,872.7	88.8														
11,794.0	5,875.6	90.0														
11,925.9	5,878.8	88.9														
12,112.9	5,874.1	92.1														
12,205.1	5,870.9	92.0														
12,384.8	5,885.2	91.6														
12,524.0	5,884.1	88.4														
12,710.0	5,883.5	91.8														
12,841.9	5,885.5	92.6														
13,022.0	5,886.8	88.4														
13,113.8	5,889.3	88.5														
13,257.9	5,882.9	88.8														
13,330.7	5,880.9	88.9														
13,467.8	5,881.6	91.6														

Report Printed: 7/22/2014



Lease Review All CR  
Well Name: RAZOR 271-2215A

API Number 051233795300	WPC ID 1CO076906	Well Permit Number	Field Name DJ Horizontal Niobrara	County Weld	State CO
Well Configuration Type Lateral/Horizontal	Orig KB Elv (ft) 4,773.30	Ground Elevation (ft) 4,756.50	Casing Flange Elevation (ft)	Tubing Head Elevation (ft)	Total Depth (ftKB) 13,478.0
Original Spud Date 12/23/2013	Completion Date 4/16/2014	Asset Group Redtail Asset Group	Responsible Engineer Andrew Fish	N/S Dist (ft) 2,394.0	N/S Ref FSL
				E/W Dist (ft) 659.0	E/W Ref FEL
Lot	Quarter 1 NE	Quarter 2 SE	Quarter 3	Quarter 4	Section 27
			Section Suffix	Section Type	Township 10 N
					Range 58 W

Lateral/Horizontal - Original Hole, 7/22/2014 3:40:28 PM				Other In Hole						
MD (ftKB)	TV D (ftKB B)	n cl (° )		Logs	Des	OD (in)	Run Date	Pull Date	Top (ftKB)	Btm (ftKB)
					CFP	4	3/24/2014	4/14/2014	12,250.0	12,252.0
					CFP	4	3/23/2014	4/14/2014	12,432.0	12,434.0
					CFP	4	3/23/2014	4/14/2014	12,608.0	12,610.0
					CFP	4	3/23/2014	4/14/2014	12,800.0	12,802.0
					CFP	4	3/23/2014	4/14/2014	12,977.0	12,979.0
					CFP	4	3/22/2014	4/14/2014	13,159.0	13,161.0
					Bottom Hole Cores					
					Date	Core #	Top (ftKB)	Btm (ftKB)	Recov (ft)	
56.8	56.8	65								
1,554.1	1,553.5	33								
1,948.8	1,947.9	65								
3,068.6	3,067.3	12								
4,574.1	4,572.3	69								
4,810.0	4,808.1	64								
4,838.6	4,836.7	12								
5,625.0	5,643.2	102.2								
6,032.8	5,815.5	91.8								
6,115.2	5,815.1	88.7								
6,293.0	5,819.2	88.9								
6,384.8	5,819.3	90.9								
6,565.0	5,815.3	91.4								
6,702.1	5,814.4	88.3								
6,936.0	5,818.0	88.1								
7,066.9	5,819.0	90.3								
7,247.0	5,816.4	91.5								
7,386.2	5,816.5	88.4								
7,564.0	5,822.3	88.5								
7,651.9	5,827.3	87.0								
7,841.9	5,829.5	92.0								
7,977.0	5,823.6	92.3								
8,157.2	5,820.6	90.3								
8,294.9	5,822.4	87.7								
8,475.1	5,824.4	88.8								
8,566.9	5,835.4	88.5								
8,747.0	5,834.7	90.5								
8,892.1	5,834.7	88.4								
9,065.9	5,834.7	91.2								
9,205.1	5,832.2	90.3								
9,384.8	5,830.4	91.1								
9,477.0	5,831.0	88.3								
9,653.9	5,838.7	87.9								
9,799.9	5,840.3	90.3								
9,975.1	5,838.7	90.9								
10,113.8	5,837.2	88.4								
10,294.0	5,842.8	87.3								
10,386.2	5,846.8	87.7								
10,562.0	5,855.3	87.0								
10,709.0	5,860.0	88.0								
10,884.8	5,861.3	90.0								
11,024.0	5,864.0	87.8								
11,200.1	5,869.5	88.1								
11,291.0	5,871.2	88.7								
11,475.1	5,871.6	90.3								
11,613.8	5,872.7	88.8								
11,794.0	5,875.6	90.0								
11,925.9	5,870.8	88.9								
12,112.9	5,874.1	92.1								
12,205.1	5,870.9	92.0								
12,384.8	5,865.2	91.6								
12,524.0	5,864.1	88.4								
12,710.0	5,863.5	91.8								
12,841.9	5,858.5	92.6								
13,022.0	5,858.8	88.4								
13,113.8	5,859.3	88.5								
13,257.9	5,862.9	88.8								
13,330.7	5,863.9	88.9								
13,467.8	5,861.6	91.6								