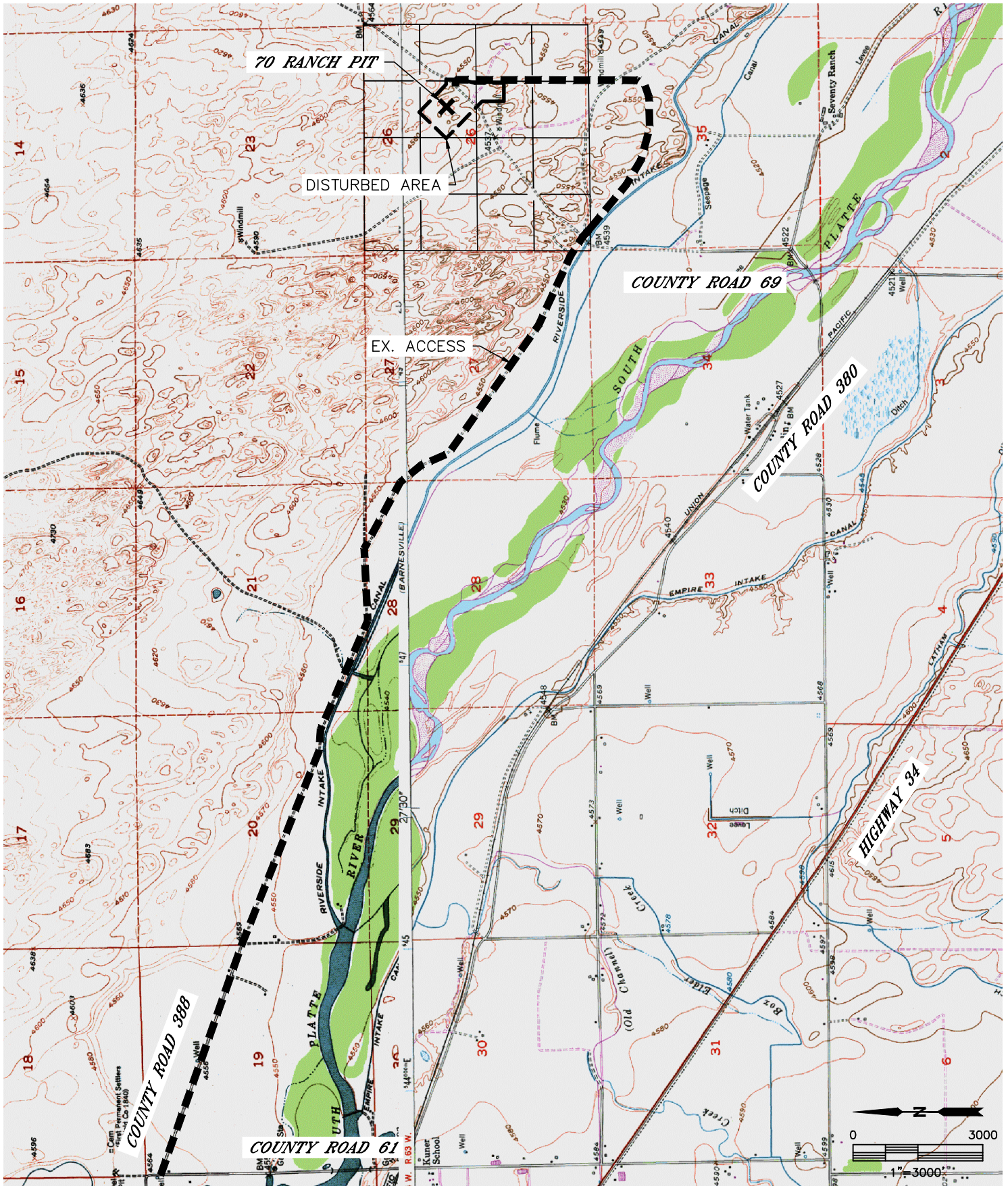




PIT FACILITY ACCESS ROAD MAP

70 RANCH PIT

SECTION: 26
TOWNSHIP: T5N
RANGE: R63W



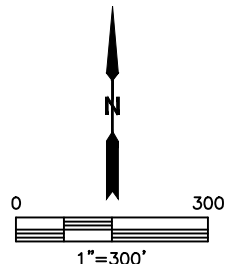
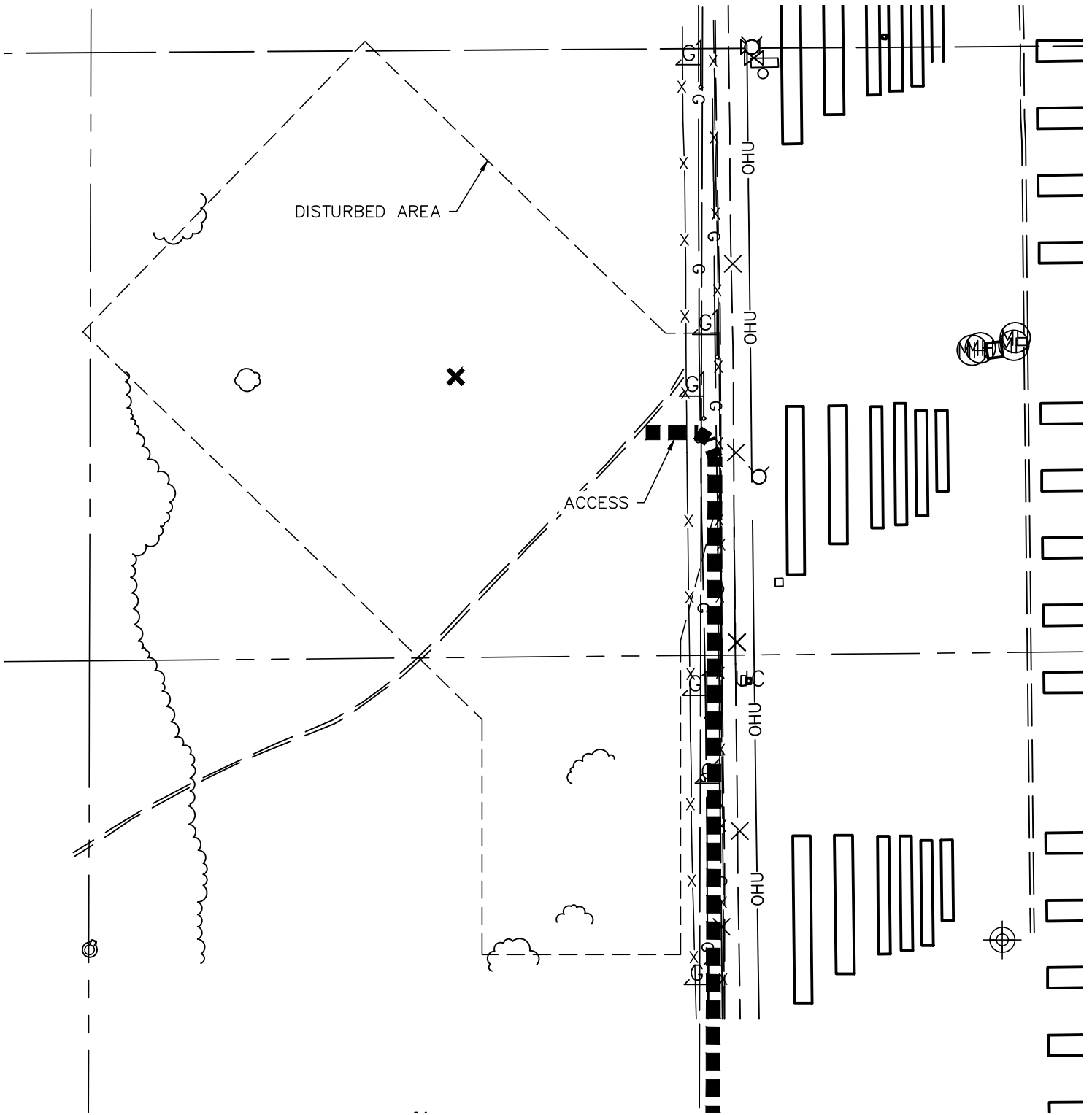


Lat40°, Inc. 1635 Foxtrail Drive, Suite 325 Loveland, CO 970-776-3321

PIT FACILITY ACCESS ROAD MAP

70 RANCH PIT

SECTION: 26
TOWNSHIP: T5N
RANGE: R63W



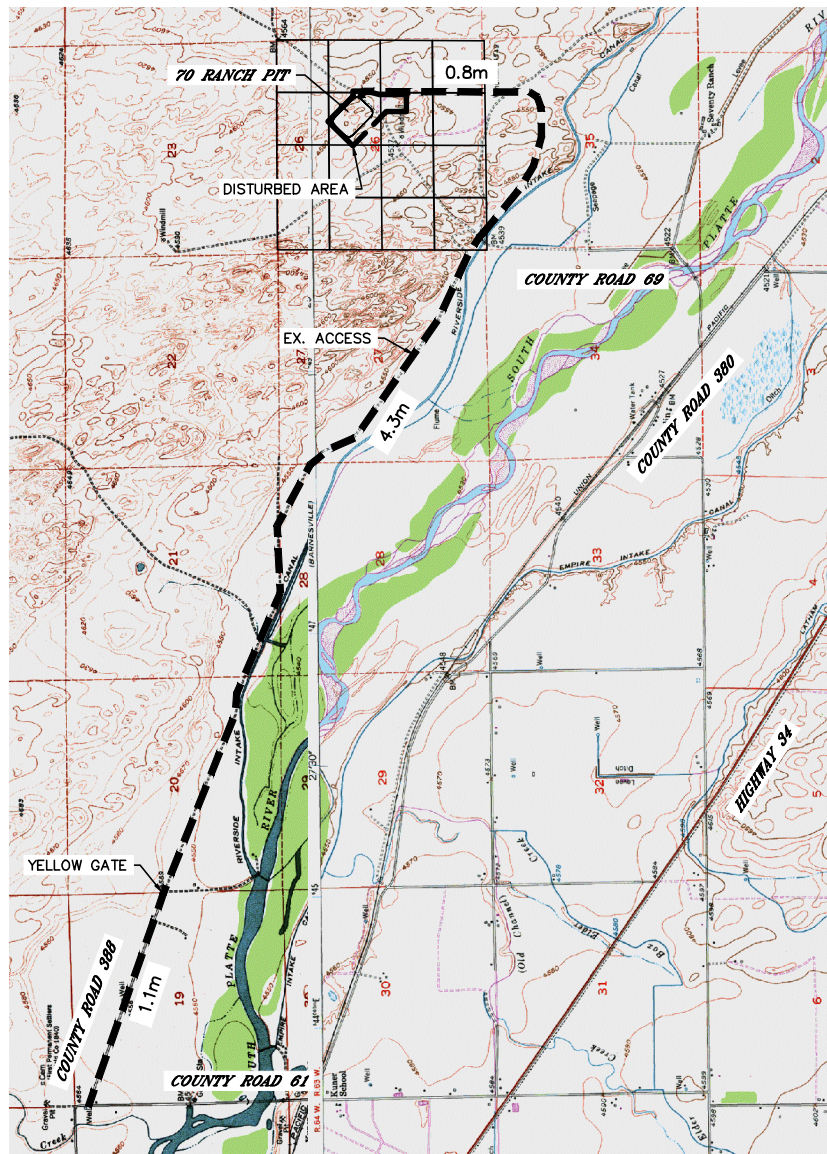


PIT FACILITY ACCESS ROAD MAP

70 RANCH PIT

SECTION: 26
TOWNSHIP: T5N
RANGE: R63W

DRIVING DIRECTIONS TO ANTELOPE 70 RANCH PIT:
FROM THE INTERSECTION OF WELD COUNTY ROAD 61 AND WELD COUNTY ROAD 388, DRIVE SOUTHEASTERLY ON COUNTY ROAD 388 FOR 1.1 MILES TO THE ENTRANCE OF 70 RANCH (YELLOW GATE), CONTINUE ALONG THE 70 RANCH MAIN ACCESS ROAD SOUTHEASTERLY FOR 4.3 MILES AND NORTH FOR 0.8 MILES TO THE 70 RANCH PIT SITE ON THE WEST SIDE OF MAIN ACCESS ROAD.



NOT TO SCALE