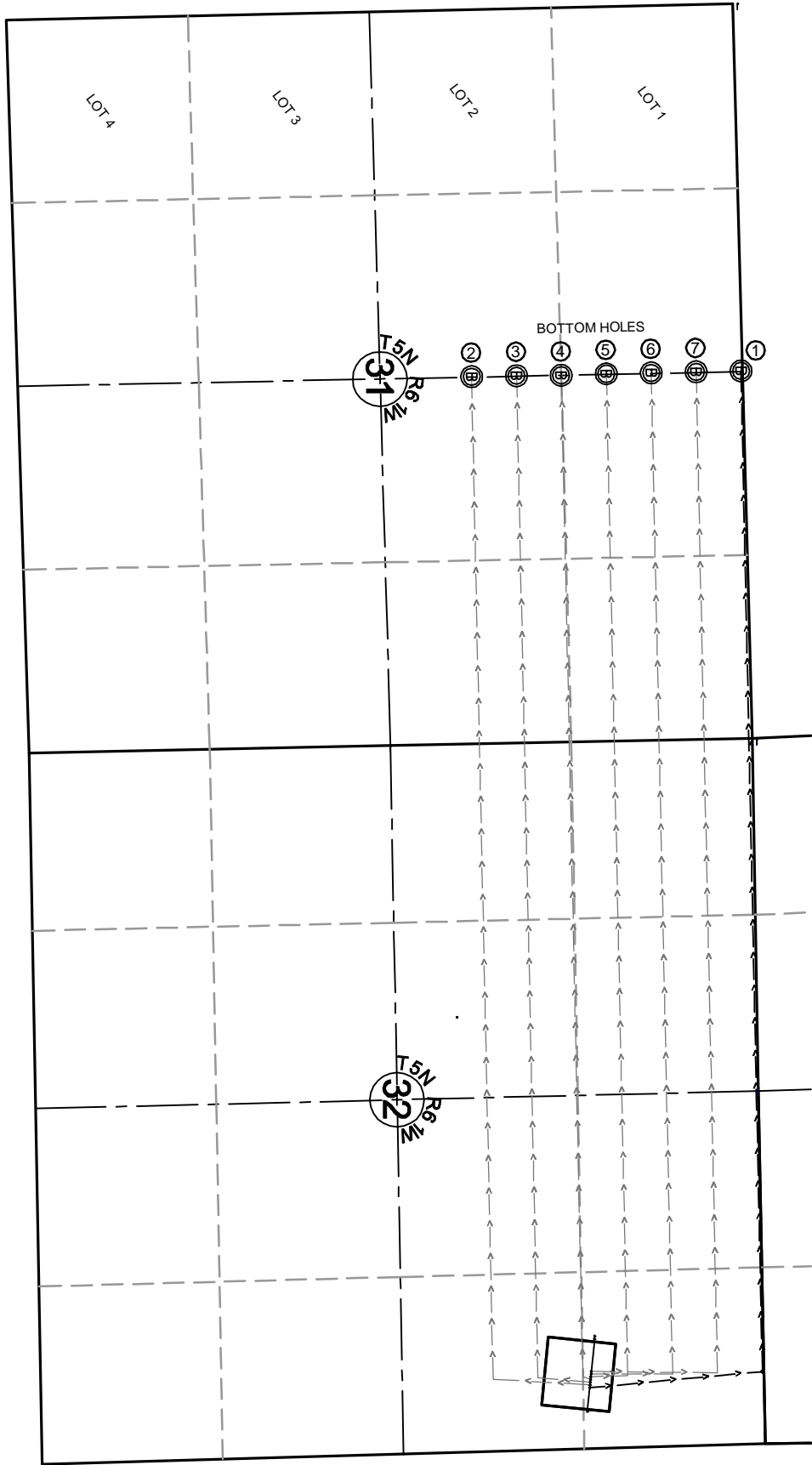


C:\FES PROJECTS\1319-01_BONANZA\5N-61W.dwg\5N-61W_LAYOUT.dwg SAVED DATE 2014-08-02 13:11



- ① STATE PRONGHORN V-32-31MRLNB
1280'FNL, 448'FEL

SURFACE LOCATION: (NAD83)
GEODETIC COORDINATES
LAT 40.36105°
LONG 104.22512°

TARGET #1: (NAD83)
GEODETIC COORDINATES
LAT 40.36454°
LONG 104.22548°

BOTTOM HOLE LOCATION:
GEODETIC COORDINATES
LAT 40.36439°
LONG 104.25188°
- ② STATE PRONGHORN V-32-A2
1278'FNL, 468'FEL

SURFACE LOCATION: (NAD83)
GEODETIC COORDINATES
LAT 40.36106°
LONG 104.22519°
- ③ STATE PRONGHORN V-32-A3
1276'FNL, 488'FEL

SURFACE LOCATION: (NAD83)
GEODETIC COORDINATES
LAT 40.36106°
LONG 104.22527°
- ④ STATE PRONGHORN V-32-A4
1273'FNL, 508'FEL

SURFACE LOCATION: (NAD83)
GEODETIC COORDINATES
LAT 40.36107°
LONG 104.22534°
- ⑤ STATE PRONGHORN V-32-A5
1271'FNL, 527'FEL

SURFACE LOCATION: (NAD83)
GEODETIC COORDINATES
LAT 40.36108°
LONG 104.22541°
- ⑥ STATE PRONGHORN V-32-A6
1269'FNL, 547'FEL

SURFACE LOCATION: (NAD83)
GEODETIC COORDINATES
LAT 40.36108°
LONG 104.22548°
- ⑦ STATE PRONGHORN V-32-A7
1266'FNL, 567'FEL

SURFACE LOCATION: (NAD83)
GEODETIC COORDINATES
LAT 40.36109°
LONG 104.22555°

SHEET NO:
2 of 7

Fremont
ENGINEERING & SURVEYING
64 COAL MINE RD.
LANDER, WY 82520
307-349-0840
fes@wyoming.com

Drawn By: DAF
Checked By: JS
Date: 5/6/14
Revision: #1
Date: 6/2/14
Explanation: Change
"V" well to "U" well

1" = 1000'

IF BAR LENGTH DOES NOT EQUAL
1"(ONE INCH), THIS PAGE WAS NOT
PLOTTED TO THE INTENDED SCALE.

MULTI-WELL PLAN

STATE PRONGHORN V-32 PAD
NE¹/₄, SECTION 32,
T.5N., R.61W., 6th PM
WELD COUNTY, COLORADO

**BONANZA
CREEK**

410 17th Street
Denver, CO 80202
(720) 440-6100