

# GENERAL NOTES:

- THE BERRY PETROLEUM HOUSE LOG TANK FACILITY PROJECT IS LOCATED IN THE SOUTHEAST PORTION OF SECTION 32, TOWNSHIP 55, RANGE 99W, 6th PRINCIPAL MERIDIAN, GARFIELD COUNTY, COLORADO.
- SITE TOPOGRAPHIC SURVEY PROVIDED BY CONSTRUCTION SURVEYS, INC. 12 SUNRISE BLVD., SALT LAKE CITY, UT 84143, DATED AUGUST 21, 2013. BASIS OF BEARINGS IS NAD 83 COLORADO STATE PLANE, CENTRAL ZONE, US FEET. VERTICAL DATUM IS NAVD 88.
- A SITE BENCHMARK WILL NEED TO BE ESTABLISHED FOR BOTH HORIZONTAL AND VERTICAL CONTROL. COORDINATE WITH BERRY PETROLEUM COMPANY PERSONNEL PRIOR TO BEGINNING GRADING OPERATIONS.
- REFER TO GEOTECHNICAL INVESTIGATION PREPARED BY YEH AND ASSOCIATES, INC. PROJECT 215-015, DATED JUNE 05, 2013 FOR ALL EARTHWORK, PREPARATION, EXCAVATION AND PLACEMENT RECOMMENDATIONS.
- CALL UTILITY LOCATE 811 FOR ALL EXISTING UNDERGROUND UTILITIES PRIOR TO ANY CONSTRUCTION ON THIS SITE.
- CUT AND FILL SLOPES SHALL BE 2H:1V UNLESS NOTED OTHERWISE.
- WORK SHALL BE DONE IN ACCORDANCE WITH THE EXCAVATION AND BUILDING CODE REQUIREMENTS OF GARFIELD COUNTY, COLORADO AND PROJECT PLANS. CONTRACTOR TO ENSURE COMPLIANCE WITH THE PROJECT PLANS DURING GRADING OPERATIONS.
- PRIOR TO COMMENCING GRADING OPERATIONS, ALL VEGETATION AND ORGANIC SURFACE MATTER SHOULD BE STRIPPED FROM THE SURFACE. STRIPPING DEPTHS RANGE FROM 4" TO 12" BASED ON SOILS BORINGS.

# LEGEND

	DENOTES FLOW DIRECTION
	MAJOR CONTOUR (EXISTING)
	MAJOR CONTOUR (EXISTING)
	MAJOR CONTOUR (PROPOSED)
	MAJOR CONTOUR (PROPOSED)
	CHAIN LINK FENCE (PROPOSED)
	EXISTING SECURITY FENCE (TO REMAIN)
	EXISTING SECURITY FENCE (TO BE REMOVED)
	TOE OF FILL
	TOP OF CUT
	PROPERTY LIMITS
	EXISTING DRAINAGE

NO.	REVISION	DATE	BY
1	ISSUED FOR PERMITTING	06-12-13	CH
2	ISSUED FOR PERMITTING	06-14-13	CH
3	ISSUED FOR REVIEW	06-14-13	CH

NO.	REVISION	DATE	BY
1	ISSUED FOR PERMITTING	06-12-13	CH
2	ISSUED FOR PERMITTING	06-14-13	CH
3	ISSUED FOR REVIEW	06-14-13	CH



TITLE	PROJECT NO.
HOUSE LOG TANK FACILITY	13041-01
CIVIL OVERALL SITE PLAN AND GENERAL LAYOUT	DRAWING NUMBER
	13041-CE-0101

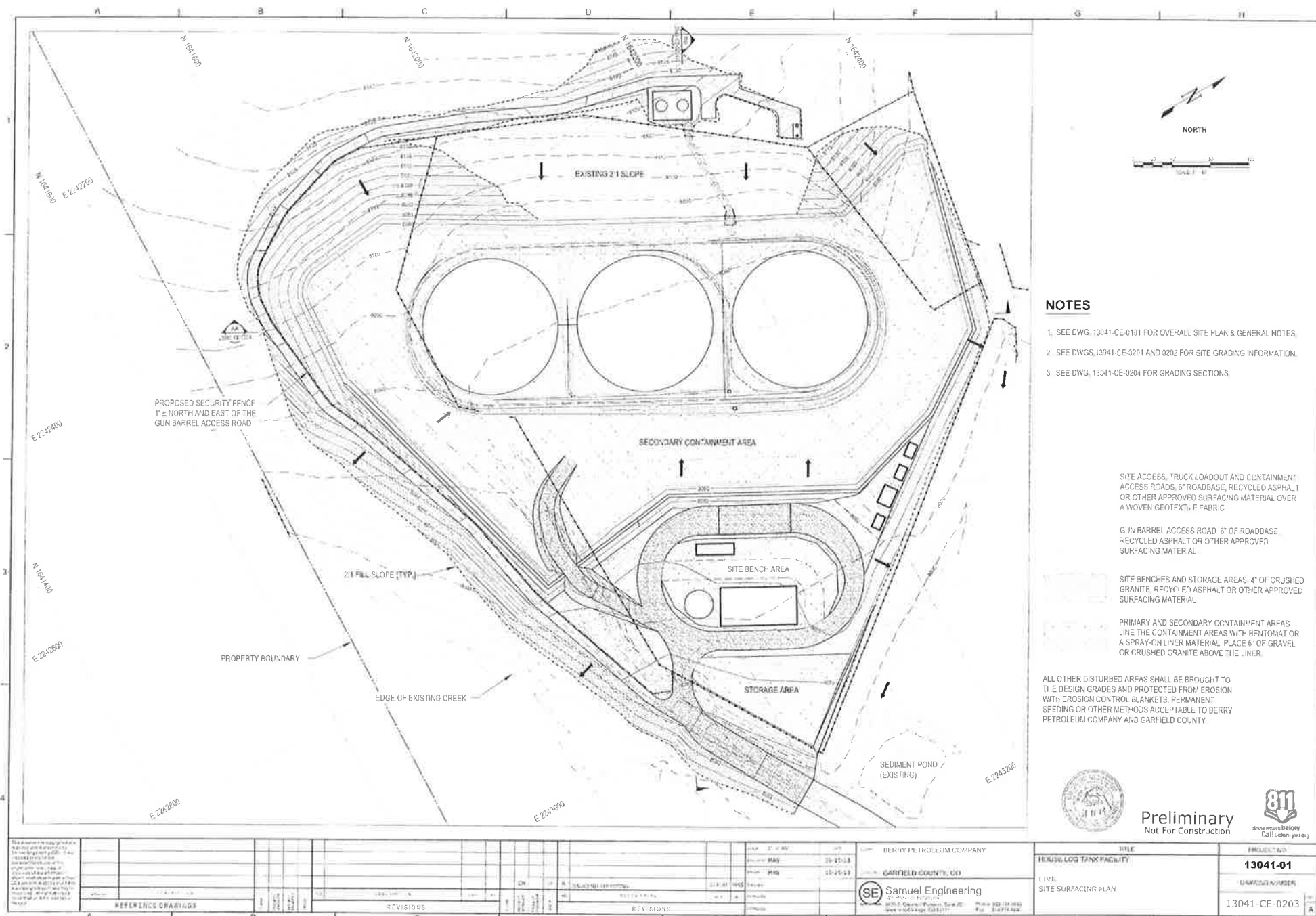
CLIENT	DATE
BERRY PETROLEUM COMPANY	06-12-13
LOCATION	DATE
GARFIELD COUNTY, CO	06-14-13

SE	Samuel Engineering
8450 E. Crested Butte, Suite 200	Phone: 303.714.4840
Greenwood Village, CO 80111	Fax: 303.714.4850









1. SEE DWG. 13041-CE-0101 FOR OVERALL SITE PLAN & GENERAL NOTES.
2. SEE DWGS. 13041-CE-0201 AND 0202 FOR SITE GRADING INFORMATION.
3. SEE DWG. 13041-CE-0204 FOR GRADING SECTIONS.

SITE ACCESS, TRUCK LOADOUT AND CONTAINMENT  
ACCESS ROADS, 6" ROADBASE, RECYCLED ASPHALT  
OR OTHER APPROVED SURFACING MATERIAL OVER  
A WOVEN GEOTEXTILE FABRIC

GUN BARREL ACCESS ROAD 6" OF ROADBASE  
RECYCLED ASPHALT OR OTHER APPROVED  
SURFACING MATERIAL

SITE BENCHES AND STORAGE AREAS: 4" OF CRUSHED GRANITE, RECYCLED ASPHALT OR OTHER APPROVED SURFACING MATERIAL

PRIMARY AND SECONDARY CONTAINMENT AREAS  
LINE THE CONTAINMENT AREAS WITH BENTONIT OR  
A SPRAY-ON LINER MATERIAL. PLACE 6" OF GRAVEL  
OR CRUSHED GRANITE ABOVE THE LINER.

ALL OTHER DISTURBED AREAS SHALL BE BROUGHT TO THE DESIGN GRADES AND PROTECTED FROM EROSION WITH EROSION CONTROL BLANKETS, PERMANENT SEEDING OR OTHER METHODS ACCEPTABLE TO BERRY PETROLEUM COMPANY AND GARFIELD COUNTY.



Preliminary  
Not For Construction



Call! Let us help you

13041-01

LITERATURE CITED

13041-CE-0203