

BONANZA CREEK OIL COMPANY

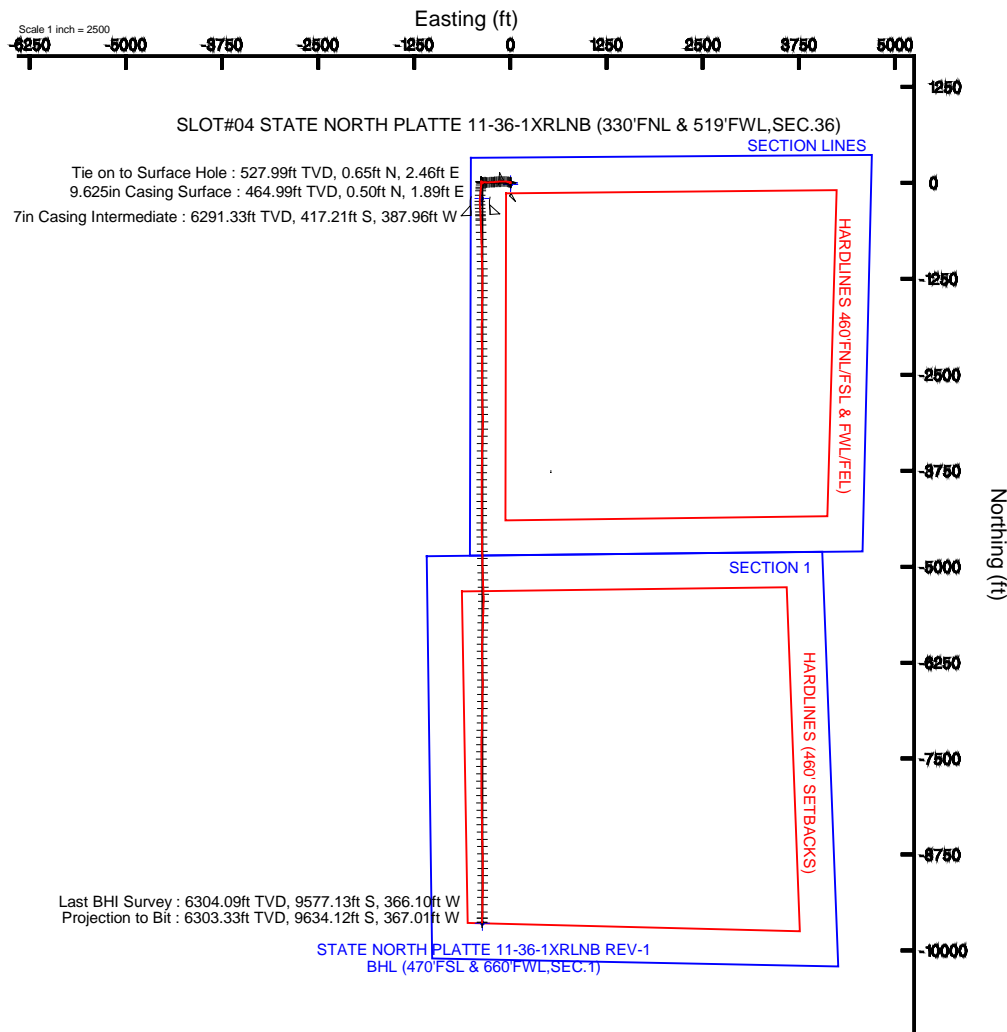
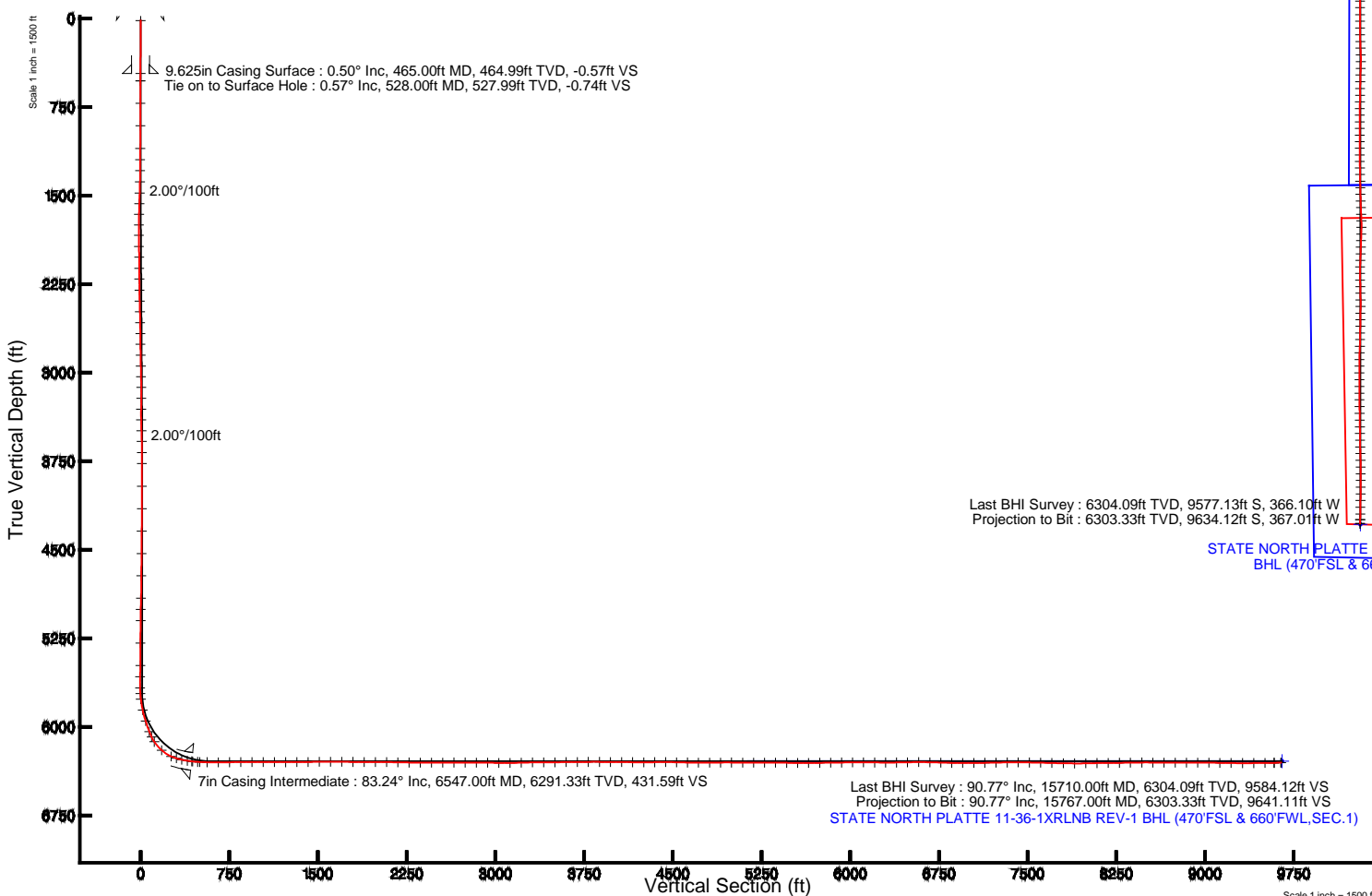
Location: COLORADO Slot: SLOT#04 STATE NORTH PLATTE 11-36-1XRLNB (330'FNL & 519'FWL,SEC.36)
Field: WELD COUNTY Well: STATE NORTH PLATTE 11-36-1XRLNB
Facility: SEC.36-T5N-R63W Wellbore: STATE NORTH PLATTE 11-36-1XRLNB PWB

Plot reference wellpath is STATE NORTH PLATTE 11-36-1XRLNB (REV-A.0) PWB

True vertical depths are referenced to RIG (RKB)	Grid System: NAD83 / Lambert Colorado SP, Northern Zone (501), US feet
Measured depths are referenced to RIG (RKB)	North Reference: True north
RIG (RKB) to Mean Sea Level: 4560 feet	Scale: True distance
Mean Sea Level to Mud line (At Slot: SLOT#04 STATE NORTH PLATTE 11-36-1XRLNB (330'FNL & 519'FWL,SEC.36)): 0 feet	Depths are in feet
Coordinates are in feet referenced to Slot	Created by: guenaler on 6/6/2014

Location Information

Facility Name				Grid East (US ft)	Grid North (US ft)	Latitude	Longitude
SEC.36-T5N-R63W				3308733.906	1376726.042	40°21'43.992"N	104°23'31.452"W
Slot			Local E (ft)	Grid East (US ft)	Grid North (US ft)	Latitude	Longitude
SLOT#04 STATE NORTH PLATTE 11-36-1XRLNB (330'FNL & 519'FWL,SEC.36)			-2.79	3308730.846	1376747.863	40°21'44.208"N	104°23'31.488"W
RIG (RKB) to Mud line (At Slot: SLOT#04 STATE NORTH PLATTE 11-36-1XRLNB (330'FNL & 519'FWL,SEC.36))							4560ft
Mean Sea Level to Mud line (At Slot: SLOT#04 STATE NORTH PLATTE 11-36-1XRLNB (330'FNL & 519'FWL,SEC.36))							0ft
RIG (RKB) to Mean Sea Level							4560ft



BGGM (1945.0 to 2015.0) Dip: 66.97° Field: 52808.8 nT
Magnetic North is 8.32 degrees East of True North (at 4/11/2014)

To correct azimuth from Magnetic to True add 8.32 degrees

Azimuth 182.17° with reference 0.00 N, 0.00 E



Actual Wellpath Report

STATE NORTH PLATTE 11-36-1XRLNB AWP
Page 1 of 9



REFERENCE WELLPATH IDENTIFICATION

Operator	BONANZA CREEK OIL COMPANY	Slot	SLOT#04 STATE NORTH PLATTE 11-36-1XRLNB (330'FNL & 519'FWL,SEC.36)
Area	COLORADO	Well	STATE NORTH PLATTE 11-36-1XRLNB
Field	WELD COUNTY	Wellbore	STATE NORTH PLATTE 11-36-1XRLNB AWP
Facility	SEC.36-T5N-R63W		

REPORT SETUP INFORMATION

Projection System	NAD83 / Lambert Colorado SP, Northern Zone (501), US feet	Software System	WellArchitect® 4.0.0
North Reference	True	User	Guenaler
Scale	0.999959	Report Generated	6/6/2014 at 1:29:54 PM
Convergence at slot	n/a	Database/Source file	WA_Denver/STATE_NORTH_PLATTE_11-36-1XRLNB_AWP.xml

WELLPATH LOCATION

	Local coordinates		Grid coordinates		Geographic coordinates	
	North[ft]	East[ft]	Easting[US ft]	Northing[US ft]	Latitude	Longitude
Slot Location	21.86	-2.79	3308730.85	1376747.86	40°21'44.208"N	104°23'31.488"W
Facility Reference Pt			3308733.91	1376726.04	40°21'43.992"N	104°23'31.452"W
Field Reference Pt			3327718.19	1377782.99	40°21'52.020"N	104°19'26.040"W

WELLPATH DATUM

Calculation method	Minimum curvature	RIG (RKB) to Facility Vertical Datum	4560.00ft
Horizontal Reference Pt	Slot	RIG (RKB) to Mean Sea Level	4560.00ft
Vertical Reference Pt	RIG (RKB)	RIG (RKB) to Mud Line at Slot (SLOT#04 STATE NORTH PLATTE 11-36-1XRLNB (330'FNL & 519'FWL,SEC.36))	4560.00ft
MD Reference Pt	RIG (RKB)	Section Origin	N 0.00, E 0.00 ft
Field Vertical Reference	Mean Sea Level	Section Azimuth	182.17°



Actual Wellpath Report

STATE NORTH PLATTE 11-36-1XRLNB AWP

Page 2 of 9



REFERENCE WELLPATH IDENTIFICATION				
Operator	BONANZA CREEK OIL COMPANY	Slot	SLOT#04 STATE NORTH PLATTE 11-36-1XRLNB (330'FNL & 519'FWL,SEC.36)	
Area	COLORADO	Well	STATE NORTH PLATTE 11-36-1XRLNB	
Field	WELD COUNTY	Wellbore	STATE NORTH PLATTE 11-36-1XRLNB AWP	
Facility	SEC.36-T5N-R63W			

WELLPATH DATA (158 stations)										
MD [ft]	Inclination [°]	Azimuth [°]	TVD [ft]	Vert Sect [ft]	North [ft]	East [ft]	Latitude	Longitude	DLS [°/100ft]	Comments
528.00	0.570	75.230	527.99	-0.74	0.65	2.46	40°21'44.214"N	104°23'31.456"W	0.11	Tie on to Surface Hole
718.00	0.620	70.750	717.98	-1.39	1.23	4.34	40°21'44.220"N	104°23'31.432"W	0.04	
909.00	0.470	68.370	908.97	-2.08	1.86	6.05	40°21'44.226"N	104°23'31.410"W	0.08	
1100.00	0.780	71.380	1099.96	-2.86	2.56	8.01	40°21'44.233"N	104°23'31.385"W	0.16	
1196.00	1.370	295.090	1195.95	-3.54	3.26	7.59	40°21'44.240"N	104°23'31.390"W	2.09	
1289.00	3.430	277.380	1288.87	-4.23	4.09	3.82	40°21'44.248"N	104°23'31.439"W	2.33	
1384.00	5.280	283.020	1383.59	-5.31	5.44	-3.26	40°21'44.262"N	104°23'31.530"W	2.00	
1479.00	6.470	289.900	1478.09	-7.76	8.24	-12.55	40°21'44.289"N	104°23'31.650"W	1.45	
1569.00	8.560	283.390	1567.31	-10.61	11.52	-23.84	40°21'44.322"N	104°23'31.796"W	2.50	
1661.00	10.860	279.610	1657.99	-13.07	14.55	-39.04	40°21'44.352"N	104°23'31.992"W	2.59	
1752.00	11.470	270.710	1747.27	-13.95	16.10	-56.54	40°21'44.367"N	104°23'32.218"W	2.01	
1843.00	10.820	271.950	1836.56	-13.68	16.50	-74.13	40°21'44.371"N	104°23'32.446"W	0.76	
1939.00	10.980	269.290	1930.83	-13.19	16.69	-92.28	40°21'44.373"N	104°23'32.680"W	0.55	
2032.00	11.410	267.920	2022.06	-12.06	16.25	-110.32	40°21'44.369"N	104°23'32.913"W	0.54	
2127.00	9.710	270.050	2115.44	-11.07	15.91	-127.73	40°21'44.365"N	104°23'33.138"W	1.84	
2220.00	10.110	269.250	2207.06	-10.37	15.81	-143.73	40°21'44.364"N	104°23'33.345"W	0.45	
2314.00	9.230	266.990	2299.72	-9.27	15.31	-159.51	40°21'44.359"N	104°23'33.549"W	1.02	
2408.00	9.310	264.310	2392.49	-7.55	14.16	-174.61	40°21'44.348"N	104°23'33.744"W	0.47	
2501.00	9.510	262.880	2484.24	-5.28	12.46	-189.71	40°21'44.331"N	104°23'33.939"W	0.33	
2595.00	8.940	267.160	2577.03	-3.39	11.14	-204.72	40°21'44.318"N	104°23'34.133"W	0.95	
2688.00	9.180	268.140	2668.87	-2.24	10.54	-219.35	40°21'44.312"N	104°23'34.322"W	0.31	
2780.00	9.090	267.190	2759.70	-1.09	9.94	-233.94	40°21'44.306"N	104°23'34.510"W	0.19	
2873.00	8.870	265.880	2851.56	0.33	9.07	-248.43	40°21'44.298"N	104°23'34.697"W	0.32	
2966.00	8.880	263.380	2943.45	2.21	7.73	-262.71	40°21'44.284"N	104°23'34.882"W	0.41	
3057.00	9.340	265.860	3033.30	4.10	6.38	-277.05	40°21'44.271"N	104°23'35.067"W	0.66	
3150.00	9.800	268.590	3125.01	5.42	5.64	-292.49	40°21'44.264"N	104°23'35.266"W	0.69	
3243.00	9.770	274.800	3216.65	5.55	6.11	-308.27	40°21'44.268"N	104°23'35.470"W	1.13	
3336.00	9.410	275.630	3308.36	4.73	7.52	-323.70	40°21'44.282"N	104°23'35.670"W	0.41	
3428.00	8.070	266.620	3399.29	4.90	7.87	-337.63	40°21'44.286"N	104°23'35.850"W	2.08	
3522.00	7.030	255.230	3492.48	7.21	6.02	-349.78	40°21'44.267"N	104°23'36.007"W	1.93	



Actual Wellpath Report

STATE NORTH PLATTE 11-36-1XRLNB AWP

Page 3 of 9



REFERENCE WELLPATH IDENTIFICATION				
Operator	BONANZA CREEK OIL COMPANY	Slot	SLOT#04 STATE NORTH PLATTE 11-36-1XRLNB (330'FNL & 519'FWL,SEC.36)	
Area	COLORADO	Well	STATE NORTH PLATTE 11-36-1XRLNB	
Field	WELD COUNTY	Wellbore	STATE NORTH PLATTE 11-36-1XRLNB AWP	
Facility	SEC.36-T5N-R63W			

WELLPATH DATA (158 stations)										
MD [ft]	Inclination [°]	Azimuth [°]	TVD [ft]	Vert Sect [ft]	North [ft]	East [ft]	Latitude	Longitude	DLS [°/100ft]	Comments
3612.00	4.560	255.080	3582.01	9.87	3.69	-358.56	40°21'44.244"N	104°23'36.120"W	2.74	
3706.00	2.330	257.440	3675.84	11.45	2.31	-364.04	40°21'44.231"N	104°23'36.191"W	2.38	
3800.00	0.840	319.190	3769.80	11.43	2.42	-366.36	40°21'44.232"N	104°23'36.221"W	2.20	
3991.00	0.100	179.630	3960.80	10.58	3.31	-367.27	40°21'44.241"N	104°23'36.232"W	0.48	
4181.00	0.670	288.580	4150.79	10.43	3.50	-368.32	40°21'44.243"N	104°23'36.246"W	0.37	
4371.00	0.680	304.240	4340.78	9.52	4.49	-370.31	40°21'44.252"N	104°23'36.272"W	0.10	
4561.00	1.200	296.670	4530.75	8.09	6.02	-373.02	40°21'44.267"N	104°23'36.307"W	0.28	
4751.00	1.380	286.700	4720.70	6.69	7.57	-376.99	40°21'44.283"N	104°23'36.358"W	0.15	
4941.00	1.710	319.880	4910.64	4.02	10.39	-381.00	40°21'44.311"N	104°23'36.410"W	0.49	
5036.00	2.030	324.340	5005.59	1.64	12.84	-382.90	40°21'44.335"N	104°23'36.434"W	0.37	
5131.00	0.430	63.030	5100.57	0.14	14.37	-383.56	40°21'44.350"N	104°23'36.443"W	2.25	
5321.00	0.830	68.280	5290.56	-0.76	15.21	-381.65	40°21'44.358"N	104°23'36.418"W	0.21	
5511.00	0.850	52.670	5480.54	-2.22	16.57	-379.25	40°21'44.372"N	104°23'36.387"W	0.12	
5606.00	0.790	39.960	5575.53	-3.18	17.50	-378.27	40°21'44.381"N	104°23'36.375"W	0.20	
5701.00	0.590	120.710	5670.52	-3.47	17.75	-377.43	40°21'44.383"N	104°23'36.364"W	0.95	
5749.00	3.440	179.110	5718.49	-1.91	16.18	-377.19	40°21'44.368"N	104°23'36.361"W	6.61	
5795.00	6.450	177.860	5764.31	2.05	12.22	-377.07	40°21'44.329"N	104°23'36.359"W	6.55	
5890.00	12.800	180.300	5857.93	17.90	-3.65	-376.93	40°21'44.172"N	104°23'36.357"W	6.70	
5985.00	17.460	186.130	5949.61	42.65	-28.36	-378.51	40°21'43.928"N	104°23'36.378"W	5.15	
6080.00	21.330	187.680	6039.21	74.08	-59.66	-382.34	40°21'43.618"N	104°23'36.427"W	4.11	
6129.00	25.590	185.420	6084.15	93.52	-79.04	-384.53	40°21'43.427"N	104°23'36.455"W	8.88	
6177.00	32.830	184.420	6126.02	116.91	-102.36	-386.52	40°21'43.196"N	104°23'36.481"W	15.12	
6272.00	48.440	185.720	6197.89	178.50	-163.79	-392.08	40°21'42.589"N	104°23'36.553"W	16.45	
6367.00	65.420	180.560	6249.56	257.77	-242.96	-396.07	40°21'41.807"N	104°23'36.604"W	18.43	
6415.00	74.450	177.080	6266.02	302.72	-287.98	-395.11	40°21'41.362"N	104°23'36.592"W	20.00	
6462.00	77.950	176.620	6277.22	348.16	-333.55	-392.60	40°21'40.912"N	104°23'36.560"W	7.51	
6510.00	80.640	176.660	6286.14	395.10	-380.63	-389.83	40°21'40.447"N	104°23'36.524"W	5.60	
6557.00	83.940	177.710	6292.44	441.49	-427.14	-387.55	40°21'39.987"N	104°23'36.494"W	7.36	
6599.00	86.260	177.880	6296.03	483.21	-468.95	-385.94	40°21'39.574"N	104°23'36.474"W	5.54	
6615.00	86.700	178.180	6297.01	499.14	-484.92	-385.39	40°21'39.416"N	104°23'36.466"W	3.33	



Actual Wellpath Report

STATE NORTH PLATTE 11-36-1XRLNB AWP

Page 4 of 9



REFERENCE WELLPATH IDENTIFICATION				
Operator	BONANZA CREEK OIL COMPANY	Slot	SLOT#04 STATE NORTH PLATTE 11-36-1XRLNB (330'FNL & 519'FWL,SEC.36)	
Area	COLORADO	Well	STATE NORTH PLATTE 11-36-1XRLNB	
Field	WELD COUNTY	Wellbore	STATE NORTH PLATTE 11-36-1XRLNB AWP	
Facility	SEC.36-T5N-R63W			

WELLPATH DATA (158 stations)										
MD [ft]	Inclination [°]	Azimuth [°]	TVD [ft]	Vert Sect [ft]	North [ft]	East [ft]	Latitude	Longitude	DLS [°/100ft]	Comments
6679.00	89.690	177.270	6299.03	562.91	-548.82	-382.85	40°21'38.785"N	104°23'36.434"W	4.88	
6774.00	89.780	177.980	6299.47	657.61	-643.74	-378.91	40°21'37.847"N	104°23'36.383"W	0.75	
6869.00	90.560	178.310	6299.19	752.37	-738.69	-375.84	40°21'36.908"N	104°23'36.343"W	0.89	
6964.00	90.960	178.020	6297.93	847.13	-833.63	-372.80	40°21'35.970"N	104°23'36.304"W	0.52	
7059.00	90.310	179.310	6296.87	941.95	-928.60	-370.58	40°21'35.032"N	104°23'36.275"W	1.52	
7154.00	89.070	178.460	6297.39	1036.79	-1023.58	-368.73	40°21'34.093"N	104°23'36.251"W	1.58	
7249.00	89.720	177.690	6298.39	1131.54	-1118.52	-365.54	40°21'33.155"N	104°23'36.210"W	1.06	
7344.00	89.910	179.360	6298.70	1226.34	-1213.48	-363.10	40°21'32.217"N	104°23'36.178"W	1.77	
7439.00	90.370	180.050	6298.47	1321.26	-1308.48	-362.61	40°21'31.278"N	104°23'36.172"W	0.87	
7534.00	91.390	181.020	6297.01	1416.20	-1403.46	-363.50	40°21'30.339"N	104°23'36.183"W	1.48	
7628.00	90.250	180.990	6295.66	1510.17	-1497.44	-365.14	40°21'29.411"N	104°23'36.205"W	1.21	
7723.00	89.720	181.220	6295.69	1605.16	-1592.42	-366.98	40°21'28.472"N	104°23'36.228"W	0.61	
7818.00	90.000	180.930	6295.92	1700.14	-1687.40	-368.76	40°21'27.534"N	104°23'36.251"W	0.42	
7913.00	89.040	180.290	6296.71	1795.10	-1782.39	-369.77	40°21'26.595"N	104°23'36.264"W	1.21	
8008.00	90.280	180.630	6297.28	1890.05	-1877.38	-370.53	40°21'25.656"N	104°23'36.274"W	1.35	
8103.00	90.220	179.560	6296.86	1984.99	-1972.38	-370.69	40°21'24.717"N	104°23'36.276"W	1.13	
8199.00	88.630	179.590	6297.83	2080.88	-2068.37	-369.98	40°21'23.769"N	104°23'36.267"W	1.66	
8294.00	88.890	178.850	6299.88	2175.73	-2163.34	-368.69	40°21'22.830"N	104°23'36.250"W	0.83	
8389.00	89.140	179.230	6301.52	2270.58	-2258.31	-367.09	40°21'21.892"N	104°23'36.230"W	0.48	
8483.00	89.970	180.500	6302.25	2364.50	-2352.31	-366.87	40°21'20.963"N	104°23'36.227"W	1.61	
8579.00	89.970	180.140	6302.30	2460.45	-2448.30	-367.41	40°21'20.015"N	104°23'36.234"W	0.37	
8674.00	90.310	180.530	6302.06	2555.40	-2543.30	-367.96	40°21'19.076"N	104°23'36.241"W	0.54	
8769.00	90.150	179.990	6301.68	2650.34	-2638.30	-368.40	40°21'18.137"N	104°23'36.246"W	0.59	
8864.00	89.810	178.960	6301.72	2745.24	-2733.29	-367.52	40°21'17.198"N	104°23'36.235"W	1.14	
8959.00	89.570	178.160	6302.23	2840.05	-2828.26	-365.14	40°21'16.260"N	104°23'36.204"W	0.88	
9053.00	89.170	177.930	6303.26	2933.80	-2922.20	-361.93	40°21'15.332"N	104°23'36.163"W	0.49	
9148.00	89.470	177.690	6304.39	3028.52	-3017.12	-358.30	40°21'14.394"N	104°23'36.116"W	0.40	
9243.00	90.280	181.020	6304.60	3123.39	-3112.10	-357.23	40°21'13.455"N	104°23'36.102"W	3.61	
9338.00	91.200	182.040	6303.37	3218.37	-3207.06	-359.77	40°21'12.517"N	104°23'36.135"W	1.45	
9433.00	91.850	181.930	6300.84	3313.34	-3301.97	-363.06	40°21'11.579"N	104°23'36.177"W	0.69	



Actual Wellpath Report

STATE NORTH PLATTE 11-36-1XRLNB AWP

Page 5 of 9



REFERENCE WELLPATH IDENTIFICATION				
Operator	BONANZA CREEK OIL COMPANY	Slot	SLOT#04 STATE NORTH PLATTE 11-36-1XRLNB (330'FNL & 519'FWL,SEC.36)	
Area	COLORADO	Well	STATE NORTH PLATTE 11-36-1XRLNB	
Field	WELD COUNTY	Wellbore	STATE NORTH PLATTE 11-36-1XRLNB AWP	
Facility	SEC.36-T5N-R63W			

WELLPATH DATA (158 stations)										
MD [ft]	Inclination [°]	Azimuth [°]	TVD [ft]	Vert Sect [ft]	North [ft]	East [ft]	Latitude	Longitude	DLS [°/100ft]	Comments
9528.00	89.910	180.820	6299.38	3408.31	-3396.92	-365.34	40°21'10.641"N	104°23'36.207"W	2.35	
9623.00	90.190	180.700	6299.30	3503.28	-3491.92	-366.60	40°21'09.702"N	104°23'36.223"W	0.32	
9718.00	91.140	181.080	6298.20	3598.25	-3586.90	-368.07	40°21'08.763"N	104°23'36.242"W	1.08	
9813.00	89.880	180.880	6297.35	3693.22	-3681.88	-369.70	40°21'07.823"N	104°23'36.263"W	1.34	
9906.00	90.990	180.440	6296.65	3786.19	-3774.87	-370.77	40°21'06.906"N	104°23'36.277"W	1.28	
10000.00	89.320	180.320	6296.39	3880.14	-3868.86	-371.39	40°21'05.977"N	104°23'36.285"W	1.78	
10093.00	90.120	180.710	6296.85	3973.10	-3961.86	-372.23	40°21'05.058"N	104°23'36.296"W	0.96	
10187.00	88.890	179.410	6297.66	4067.03	-4055.85	-372.33	40°21'04.129"N	104°23'36.297"W	1.90	
10281.00	89.320	180.330	6299.13	4160.94	-4149.83	-372.11	40°21'03.200"N	104°23'36.294"W	1.08	
10374.00	90.060	179.430	6299.63	4253.86	-4242.83	-371.92	40°21'02.282"N	104°23'36.292"W	1.25	
10467.00	90.930	179.030	6298.83	4346.73	-4335.82	-370.67	40°21'01.363"N	104°23'36.276"W	1.03	
10560.00	89.810	180.960	6298.23	4439.66	-4428.81	-370.66	40°21'00.444"N	104°23'36.275"W	2.40	
10652.00	88.390	179.230	6299.67	4531.58	-4520.79	-370.81	40°20'59.535"N	104°23'36.277"W	2.43	
10745.00	89.320	179.600	6301.53	4624.46	-4613.77	-369.86	40°20'58.616"N	104°23'36.265"W	1.08	
10838.00	89.070	178.680	6302.84	4717.32	-4706.75	-368.47	40°20'57.697"N	104°23'36.247"W	1.03	
10932.00	90.460	178.730	6303.22	4811.14	-4800.72	-366.34	40°20'56.769"N	104°23'36.220"W	1.48	
11025.00	91.230	179.330	6301.85	4903.99	-4893.70	-364.77	40°20'55.850"N	104°23'36.199"W	1.05	
11118.00	89.260	178.260	6301.45	4996.82	-4986.67	-362.81	40°20'54.931"N	104°23'36.174"W	2.41	
11212.00	89.320	178.040	6302.62	5090.58	-5080.61	-359.78	40°20'54.003"N	104°23'36.135"W	0.24	
11305.00	90.370	178.050	6302.87	5183.34	-5173.56	-356.61	40°20'53.084"N	104°23'36.094"W	1.13	
11399.00	90.060	177.190	6302.52	5277.04	-5267.47	-352.70	40°20'52.156"N	104°23'36.043"W	0.97	
11491.00	89.690	178.670	6302.72	5368.79	-5359.41	-349.38	40°20'51.248"N	104°23'36.000"W	1.66	
11585.00	88.950	180.710	6303.83	5462.69	-5453.40	-348.87	40°20'50.319"N	104°23'35.994"W	2.31	
11677.00	90.000	182.030	6304.68	5554.67	-5545.36	-351.07	40°20'49.410"N	104°23'36.022"W	1.83	
11771.00	89.940	181.660	6304.73	5648.67	-5639.32	-354.10	40°20'48.482"N	104°23'36.061"W	0.40	
11864.00	90.810	181.930	6304.12	5741.67	-5732.27	-357.01	40°20'47.563"N	104°23'36.099"W	0.98	
11957.00	90.590	182.130	6302.98	5834.66	-5825.20	-360.30	40°20'46.645"N	104°23'36.141"W	0.32	
12050.00	90.990	182.390	6301.70	5927.65	-5918.12	-363.97	40°20'45.727"N	104°23'36.189"W	0.51	
12142.00	90.650	181.620	6300.38	6019.64	-6010.05	-367.19	40°20'44.818"N	104°23'36.230"W	0.91	
12235.00	89.380	179.360	6300.36	6112.59	-6103.04	-367.99	40°20'43.899"N	104°23'36.241"W	2.79	



Actual Wellpath Report

STATE NORTH PLATTE 11-36-1XRLNB AWP

Page 6 of 9



REFERENCE WELLPATH IDENTIFICATION

Operator	BONANZA CREEK OIL COMPANY	Slot	SLOT#04 STATE NORTH PLATTE 11-36-1XRLNB (330'FNL & 519'FWL,SEC.36)
Area	COLORADO	Well	STATE NORTH PLATTE 11-36-1XRLNB
Field	WELD COUNTY	Wellbore	STATE NORTH PLATTE 11-36-1XRLNB AWP
Facility	SEC.36-T5N-R63W		

WELLPATH DATA (158 stations)

MD [ft]	Inclination [°]	Azimuth [°]	TVD [ft]	Vert Sect [ft]	North [ft]	East [ft]	Latitude	Longitude	DLS [°/100ft]	Comments
12329.00	89.660	178.810	6301.15	6206.45	-6197.03	-366.48	40°20'42.971"N	104°23'36.221"W	0.66	
12422.00	89.750	178.500	6301.62	6299.28	-6290.00	-364.30	40°20'42.052"N	104°23'36.193"W	0.35	
12515.00	90.580	179.310	6301.36	6392.12	-6382.98	-362.52	40°20'41.133"N	104°23'36.170"W	1.25	
12608.00	91.450	179.230	6299.71	6484.99	-6475.96	-361.34	40°20'40.214"N	104°23'36.155"W	0.94	
12702.00	90.250	180.530	6298.31	6578.90	-6569.94	-361.14	40°20'39.286"N	104°23'36.152"W	1.88	
12796.00	88.240	181.040	6299.55	6672.86	-6663.92	-362.43	40°20'38.357"N	104°23'36.169"W	2.21	
12889.00	88.400	180.470	6302.28	6765.79	-6756.87	-363.65	40°20'37.438"N	104°23'36.184"W	0.64	
12982.00	89.170	181.280	6304.25	6858.75	-6849.84	-365.07	40°20'36.520"N	104°23'36.203"W	1.20	
13075.00	89.660	181.440	6305.20	6951.73	-6942.81	-367.28	40°20'35.601"N	104°23'36.231"W	0.55	
13169.00	90.400	180.050	6305.15	7045.70	-7036.80	-368.50	40°20'34.672"N	104°23'36.247"W	1.68	
13262.00	90.950	182.000	6304.06	7138.67	-7129.77	-370.17	40°20'33.754"N	104°23'36.269"W	2.18	
13357.00	91.280	182.990	6302.21	7233.65	-7224.66	-374.30	40°20'32.816"N	104°23'36.322"W	1.10	
13451.00	90.060	180.230	6301.11	7327.63	-7318.61	-376.94	40°20'31.888"N	104°23'36.356"W	3.21	
13544.00	90.150	180.590	6300.94	7420.58	-7411.60	-377.61	40°20'30.969"N	104°23'36.365"W	0.40	
13639.00	89.470	180.150	6301.25	7515.53	-7506.60	-378.22	40°20'30.030"N	104°23'36.372"W	0.85	
13734.00	88.360	179.110	6303.05	7610.42	-7601.58	-377.61	40°20'29.091"N	104°23'36.365"W	1.60	
13829.00	88.670	179.730	6305.51	7705.28	-7696.54	-376.65	40°20'28.153"N	104°23'36.352"W	0.73	
13925.00	88.890	180.080	6307.56	7801.18	-7792.52	-376.49	40°20'27.204"N	104°23'36.350"W	0.43	
14020.00	89.410	178.860	6308.97	7896.07	-7887.50	-375.61	40°20'26.266"N	104°23'36.339"W	1.40	
14115.00	91.170	179.700	6308.49	7990.94	-7982.49	-374.42	40°20'25.327"N	104°23'36.323"W	2.05	
14210.00	91.700	179.640	6306.11	8085.82	-8077.46	-373.87	40°20'24.389"N	104°23'36.316"W	0.56	
14305.00	90.120	178.650	6304.60	8180.67	-8172.43	-372.45	40°20'23.450"N	104°23'36.298"W	1.96	
14400.00	90.520	178.920	6304.07	8275.50	-8267.41	-370.44	40°20'22.512"N	104°23'36.272"W	0.51	
14494.00	90.960	179.760	6302.85	8369.38	-8361.39	-369.35	40°20'21.583"N	104°23'36.258"W	1.01	
14590.00	90.680	179.000	6301.48	8465.26	-8457.38	-368.32	40°20'20.634"N	104°23'36.244"W	0.84	
14684.00	88.670	178.500	6302.01	8559.08	-8551.35	-366.26	40°20'19.706"N	104°23'36.218"W	2.20	
14779.00	89.970	178.560	6303.14	8653.88	-8646.31	-363.83	40°20'18.768"N	104°23'36.186"W	1.37	
14874.00	89.750	178.600	6303.37	8748.70	-8741.28	-361.47	40°20'17.829"N	104°23'36.156"W	0.24	
14969.00	90.400	179.100	6303.25	8843.54	-8836.26	-359.57	40°20'16.890"N	104°23'36.131"W	0.86	
15064.00	91.050	179.790	6302.05	8938.42	-8931.25	-358.65	40°20'15.952"N	104°23'36.119"W	1.00	



Actual Wellpath Report

STATE NORTH PLATTE 11-36-1XRLNB AWP

Page 7 of 9



REFERENCE WELLPATH IDENTIFICATION				
Operator	BONANZA CREEK OIL COMPANY	Slot	SLOT#04 STATE NORTH PLATTE 11-36-1XRLNB (330'FNL & 519'FWL,SEC.36)	
Area	COLORADO	Well	STATE NORTH PLATTE 11-36-1XRLNB	
Field	WELD COUNTY	Wellbore	STATE NORTH PLATTE 11-36-1XRLNB AWP	
Facility	SEC.36-T5N-R63W			

WELLPATH DATA (158 stations)										
MD [ft]	Inclination [°]	Azimuth [°]	TVD [ft]	Vert Sect [ft]	North [ft]	East [ft]	Latitude	Longitude	DLS [°/100ft]	Comments
15158.00	88.720	180.320	6302.23	9032.35	-9025.24	-358.74	40°20'15.023"N	104°23'36.121"W	2.54	
15252.00	88.810	180.710	6304.26	9126.29	-9119.21	-359.58	40°20'14.094"N	104°23'36.131"W	0.43	
15347.00	89.200	180.560	6305.91	9221.24	-9214.19	-360.63	40°20'13.156"N	104°23'36.145"W	0.44	
15442.00	89.940	180.740	6306.62	9316.20	-9309.18	-361.71	40°20'12.217"N	104°23'36.159"W	0.80	
15537.00	90.430	181.230	6306.32	9411.18	-9404.17	-363.35	40°20'11.279"N	104°23'36.180"W	0.73	
15632.00	90.890	180.740	6305.22	9506.15	-9499.15	-364.98	40°20'10.340"N	104°23'36.201"W	0.71	
15710.00	90.770	180.910	6304.09	9584.12	-9577.13	-366.10	40°20'09.569"N	104°23'36.216"W	0.27	Last BHI Survey
15767.00	90.770	180.910	6303.33	9641.11	-9634.12	-367.01	40°20'09.006"N	104°23'36.227"W	0.00	Projection to Bit

HOLE & CASING SECTIONS -										
Ref Wellbore: STATE NORTH PLATTE 11-36-1XRLNB AWP					Ref Wellpath: STATE NORTH PLATTE 11-36-1XRLNB AWP					
String/Diameter	Start MD [ft]	End MD [ft]	Interval [ft]	Start TVD [ft]	End TVD [ft]	Start N/S [ft]	Start E/W [ft]	End N/S [ft]	End E/W [ft]	
9.625in Casing Surface	17.00	465.00	448.00	17.00	464.99	0.00	0.00	0.50	1.89	
8.75in Open Hole	465.00	5647.00	5182.00	464.99	5616.52	0.50	1.89	17.79	-377.90	
7in Casing Intermediate	17.00	6547.00	6530.00	17.00	6291.33	0.00	0.00	-417.21	-387.96	
6.125in Open Hole	6547.00	15767.00	9220.00	6291.33	6303.33	-417.21	-387.96	-9634.12	-367.01	



Actual Wellpath Report

STATE NORTH PLATTE 11-36-1XRLNB AWP

Page 8 of 9



REFERENCE WELLPATH IDENTIFICATION			
Operator	BONANZA CREEK OIL COMPANY	Slot	SLOT#04 STATE NORTH PLATTE 11-36-1XRLNB (330'FNL & 519'FWL,SEC.36)
Area	COLORADO	Well	STATE NORTH PLATTE 11-36-1XRLNB
Field	WELD COUNTY	Wellbore	STATE NORTH PLATTE 11-36-1XRLNB AWP
Facility	SEC.36-T5N-R63W		

TARGETS									
Name	MD [ft]	TVD [ft]	North [ft]	East [ft]	Grid East [US ft]	Grid North [US ft]	Latitude	Longitude	Shape
STATE NORTH PLATTE 11-36-1XRLNB SECTION 1		0.00	-0.40	1.70	3308732.55	1376747.48	40°21'44.204"N	104°23'31.466"W	polygon
STATE NORTH PLATTE K-O-36HC SECTION LINES		0.00	-21.86	2.79	3308733.91	1376726.04	40°21'43.992"N	104°23'31.452"W	polygon
STATE NORTH PLATTE 11-36-1XRLNB HARDLINES 460'FNL/FSL & FWL/FEL)		6290.00	-0.40	1.70	3308732.55	1376747.48	40°21'44.204"N	104°23'31.466"W	polygon
STATE NORTH PLATTE 11-36-1XRLNB REV-1 BHL (470'FSL & 660'FWL,SEC.1)		6290.00	-9645.07	-363.26	3308488.13	1367099.42	40°20'08.898"N	104°23'36.179"W	point
STATE NORTH PLATTE 11-36-1XRLNB TARGET		6290.00	-204.37	-370.92	3308362.52	1376538.88	40°21'42.188"N	104°23'36.280"W	point
STATE NORTH PLATTE K-O-36HC HARDLINES (460' SETBACKS)		6417.72	-21.86	2.79	3308733.91	1376726.04	40°21'43.992"N	104°23'31.452"W	polygon

WELLPATH COMPOSITION -			
Ref Wellbore: STATE NORTH PLATTE 11-36-1XRLNB AWP		Ref Wellpath: STATE NORTH PLATTE 11-36-1XRLNB AWP	
Start MD [ft]	End MD [ft]	Positional Uncertainty Model	Log Name/Comment
17.00	6557.00	NaviTrak (Standard)	BHI/Navitrak MWD 8.75" Hole <17'-6557'>
6557.00	15710.00	NaviTrak (MagCorr)	BHI/Navitrak MWD 6.125" Hole <6599'-15710'>
15710.00	15767.00	Blind Drilling (std)	Projection to bit



Actual Wellpath Report
STATE NORTH PLATTE 11-36-1XRLNB AWP
Page 9 of 9



REFERENCE WELLPATH IDENTIFICATION			
Operator	BONANZA CREEK OIL COMPANY	Slot	SLOT#04 STATE NORTH PLATTE 11-36-1XRLNB (330'FNL & 519'FWL,SEC.36)
Area	COLORADO	Well	STATE NORTH PLATTE 11-36-1XRLNB
Field	WELD COUNTY	Wellbore	STATE NORTH PLATTE 11-36-1XRLNB AWP
Facility	SEC.36-T5N-R63W		

WELLPATH COMMENTS				
MD [ft]	Inclination [°]	Azimuth [°]	TVD [ft]	Comment
528.00	0.570	75.230	527.99	Tie on to Surface Hole
15710.00	90.770	180.910	6304.09	Last BHI Survey
15767.00	90.770	180.910	6303.33	Projection to Bit