



July 21, 2014

Colorado Oil and Gas Conservation Commission
1120 Lincoln St., Suite 801
Denver, CO 80203

Attn: Mr. Matt Lepore, Director

RE: **Kiyota 4J-35H-O367**
Township 3N, Range 67W, 6th P.M.
Section 35: 451' FSL, 1469' FEL (Surface Hole Location)
Section 35: 460' FNL, 485' FEL (Bottom Hole Location)
Weld County, CO

Dear Mr. Lepore,

Encana Oil and Gas (Encana) is planning to drill the captioned boundary well in accordance with the provisions of COGCC Rule 318A.e.

Proposed spacing unit configuration:	E2 35
Formation(s):	Codell
Spacing unit acreage:	320

Encana is the only owner within the proposed spacing unit. Enclosed is a copy of the map illustrating the proposed wellbore spacing unit to assist you in your review and approval of Encana's proposed APD for the captioned well.

Thank you for your time and attention to this matter. Encana respectfully requests that the COGC review the enclosed information and approve the Application for Permit to Drill the caption well.

Sincerely,
ENCANA OIL & GAS

A handwritten signature in black ink, appearing to read "B. Lamond", written in a cursive style.

Bonnie Lamond
Regulatory Analyst

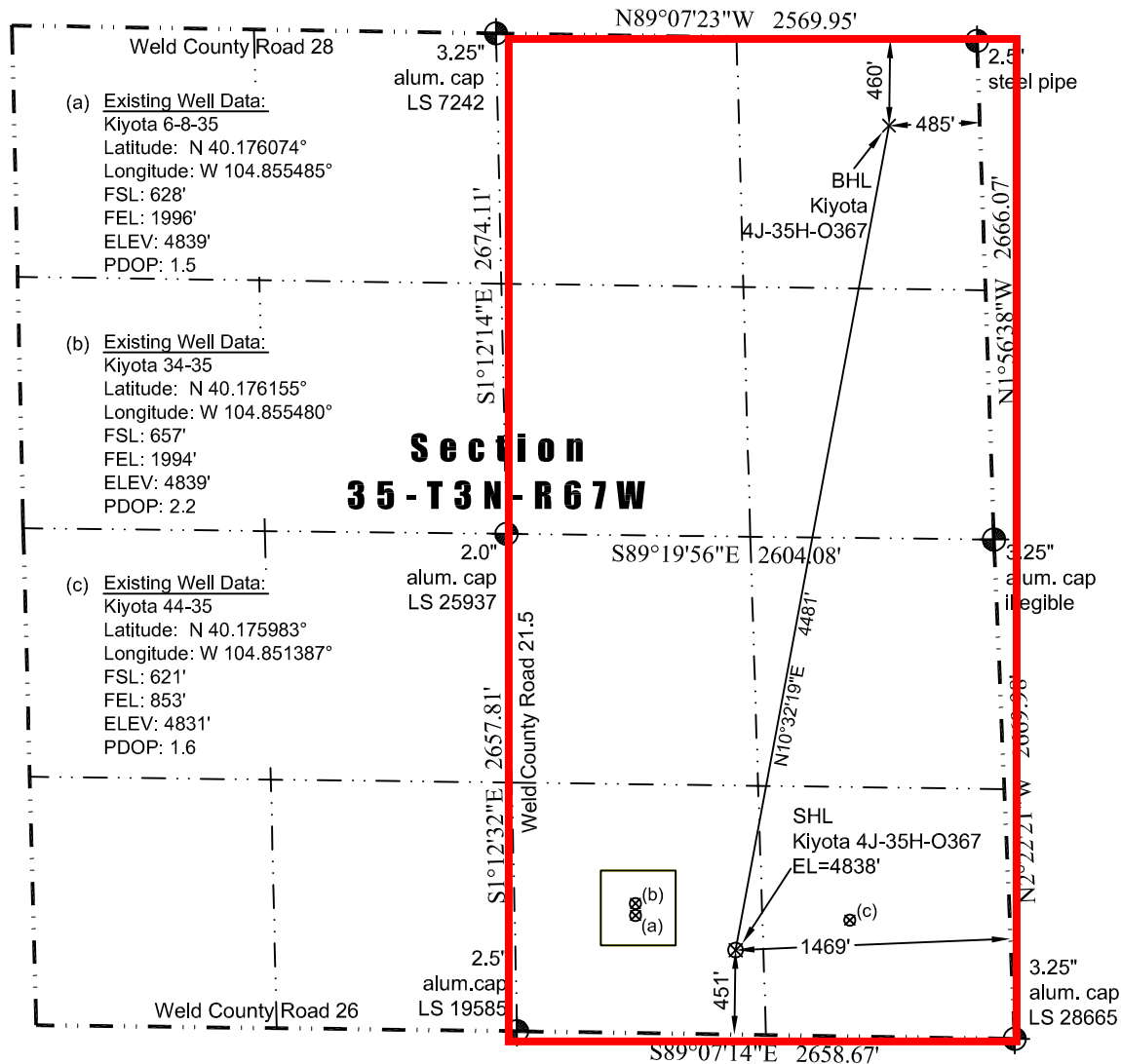
Encana Oil & Gas (USA) Inc.
Republic Plaza
370 – 17 Street, Suite 1700
Denver, Colorado
United States 80202

t 303.623.2300
f 303.623.2400



Kiyota 4J-35H-O367
Spacing Unit: 320 acres
E/2 Section 35
Township 3 North, Range 67 West

Washburn Land Surveying
 www.WashburnSurveying.com
 970-232-9645



Scale 1" = 1000'
 approximate scale

LEGEND
 — found survey monument
 (c) — calculated dimension

In accordance with a request from Jay Knutson of EnCana Oil & Gas (USA) Inc., Washburn Land Surveying, LLC has determined the location of the **Kiyota 4J-35H-O367** well site to be SHL: 451' FSL and 1469' FEL, (BHL: 460' FNL and 485' FEL), as measured at ninety (90) degrees from the section lines of Section 35, Township 3 North, Range 67 West of the 6th Principal Meridian, Weld County Colorado.

Proposed Surface Hole Data:

Latitude: N 40.175555° (BHL: 40.187631°)
 Longitude: W 104.853575° (BHL: 104.850526°)
 PDOP: 1.6

Nearest:

Building Unit: 1,020' southwest
 Building: 359' southwest
 Public Road: 1,167' southwest
 Property Line: 451' south
 Existing Well: Kiyota 6-8-35; 566' northwest

Above Ground Utility: 462' southwest
 Railroad: +5,280'
 Well Window: SHL is 321' outside
 High Occupancy Building Unit: +5,280'

I hereby certify that this Well Location Certificate was prepared by me or under my direct supervision on 7/11/2014 for and on behalf of EnCana Oil & Gas (USA) Inc. That it is not a Land Survey Plat or an Improvement Survey Plat and that it is not to be relied upon for establishment of fences, buildings, or other future improvement lines.

John Robert McGehee LS#38219
 Well: Kiyota 4J-35H-O367 WLC

Notes:

- 1) Bearings and distances based on NAD 83 Colorado North State Plane Coordinate, using RTK GPS observations taken 7/10/14 by operator Chris Bettencourt.
- 2) Conversion factor to ground (1.0002704325).
- 3) Elevations based on NAVD 88 GPS heights and Geoid 2009 corrections.
- 4) See Location Drawing for visible improvements within 500 feet of Pad Site.
- 5) The surface use is a cultivated field.

NOTICE: According to Colorado law you must commence any legal action based upon any defect in this W.L.C. within three years after you first discover such defect. In no event may any action based upon any defect in this W.L.C. be commenced more than ten years from this said date of the certification shown hereon.