

HALLIBURTON

iCem[®] Service

BILL BARRETT CORPORATION E-BILL

Date: Sunday, June 08, 2014

Anschutz Equus Farms 04-62-09-1724CH2

Case 1

Sincerely,
Mark Dean & Crew

Table of Contents

1.1	Executive Summary	3
1.2	Cementing Job Summary	4
1.4	Job Event Log	7
2.0	Custom Graphs	9
2.1	Custom Graph	9

1.1 Executive Summary

Halliburton appreciates the opportunity to perform the cementing services on the **Anschutz Equus Farms 04-62-09-1724CH2** cement **Surface** casing job. A pre-job safety meeting was held before the job where details of the job were discussed, potential safety hazards were reviewed, and environmental compliance procedures were outlined.

Halliburton maintains a continuous quality improvement process and appreciates any comments or suggestions that you may have. Halliburton again thanks you for the opportunity to perform service work on this well. We hope to be your solutions provider for future projects.

Respectfully,

Halliburton [Brighton]

1.2 Cementing Job Summary

HALLIBURTON

Cementing Job Summary

The Road to Excellence Starts with Safety

Sold To #: 343492	Ship To #: 3361113	Quote #:	Sales Order #: 0901411653
Customer: BILL BARRETT CORPORATION E-BILL		Customer Rep: Charlie Brown	
Well Name: ANSCHUTZ EQUUS FARMS	Well #: 4-62-9-1724C H2	API/UWI #: 05-123-39050-00	
Field: WATTENBERG	City (SAP): KERSEY	County/Parish: WELD	State: COLORADO
Legal Description: SW NW-9-4N-62W-1324FNL-250FWL			
Contractor: CADE DRLG		Rig/Platform Name/Num: CADE 24	
Job BOM: 7521			
Well Type: HORIZONTAL OIL			
Sales Person: HALAMERICA\HX46524		Srvc Supervisor: Mark Dean	
Job			
Formation Name			
Formation Depth (MD)	Top	Bottom	
Form Type		BHST	
Job depth MD	847ft	Job Depth TVD	
Water Depth		Wk Ht Above Floor	3 ft
Perforation Depth (MD)	From	To	
Well Data			
Description	New / Used	Size in	ID in
Casing		9.625	8.835
Open Hole Section			13.75
Weight lbm/ft		40	
Thread			
Grade		J-55	
Top MD ft		0	824
Bottom MD ft		0	824
Top TVD ft			
Bottom TVD ft			
Tools and Accessories			
Type	Size in	Qty	Make
Guide Shoe	9.625	1	
Float Shoe	9.625	1	
Float Collar	9.625	1	
Insert Float	9.625	1	
Stage Tool	9.625	1	
Type	Size in	Qty	Make
Top Plug	9.625	1	HES
Bottom Plug	9.625	0	HES
SSR plug set	9.625	1	HES
Plug Container	9.625	1	HES
Centralizers	9.625	1	HES
Miscellaneous Materials			
Gelling Agt	Conc	Surfactant	Conc
Treatment Fld	Conc	Inhibitor	Conc
Acid Type	QTY	Sand Type	QTY
Fluid Data			
Stage/Plug #: 1			
Fluid #	Stage Type	Fluid Name	Qty
1	Fresh Water Spacer	Fresh Water Spacer	20
Qty UoM	Mixing Density lbm/gal	Yield ft ³ /sack	Mix Fluid Gal
bbl	8.33		
Rate bbl/min	Total Mix Fluid Gal		
Fluid #	Stage Type	Fluid Name	Qty
2	Tail Cement	SWIFTCM (TM) SYSTEM	345
Qty UoM	Mixing Density lbm/gal	Yield ft ³ /sack	Mix Fluid Gal
sack	14.2	1.54	
Rate bbl/min	Total Mix Fluid Gal		
			7.64

7.64 Gal		FRESH WATER							
Fluid #	Stage Type	Fluid Name	Qty	Qty UoM	Mixing Density lbm/gal	Yield ft3/sack	Mix Fluid Gal	Rate bbl/mi n	Total Mix Fluid Gal
3	Displacement	Displacement	63	bbl	8.33				
Cement Left in Pipe		Amount	27 ft		Reason		Shoe Joint		
Comment									

Planned Pumping Schedule

Stage /Plug #	Fluid #	Fluid Type	Fluid Name	Surface Density lbm/gal	Avg Rate bbl/min	Surface Volume	Downhole Volume
1	1	Spacer	Fresh Water Spacer	8.33	2.00	20.0 bbl	10.0 bbl
1	2	Cement Slurry	SwiftCem B2	14.2	3.00	345.0 sacks	372.0 sacks

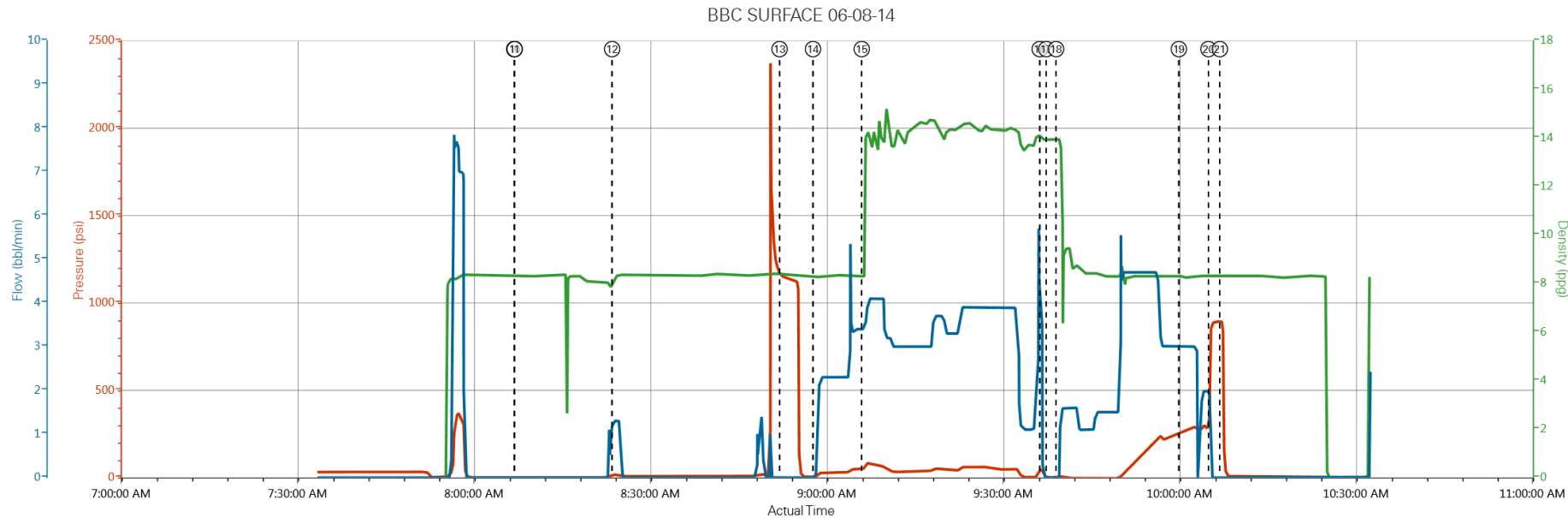
1.3 Job Event Log

Type	Seq. No.	Activity	Graph Label	Date	Time	Source	Pass-Side Pump Pressure (psi)	Downhole Density (ppg)	Combined Pump Rate (bbl/min)	Comment
Event	1	Call Out	Call Out	6/7/2014	22:00:13	USER				Crew called @ 22:00
Event	2	Pre-Convoy Safety Meeting	Pre-Convoy Safety Meeting	6/8/2014	03:00:14	USER				Discussed load checks, planned route and safe driving
Event	3	Depart from Service Center or Other Site	Depart from Service Center or Other Site	6/8/2014	03:30:15	USER				Late departure due to expired SMM permit on loaded 660. Had to transfer CMT into a different truck.
Event	4	Arrive at Location from Service Center	Arrive at Location from Service Center	6/8/2014	06:30:16	USER				Directions led to road closure @ CR 87. Lost extra 1.5 hrs due to road closure. Requested on loc @ 04:30
Event	5	Assessment Of Location Safety Meeting	Assessment Of Location Safety Meeting	6/8/2014	06:40:17	USER				Rig on bottom circulating 310 GPM since midnight.
Event	6	Pre-Rig Up Safety Meeting	Pre-Rig Up Safety Meeting	6/8/2014	06:45:18	USER				Discussed PPE, spotting, layout and other hazards
Event	7	Rig-Up Equipment	Rig-Up Equipment	6/8/2014	06:50:19	USER				Rigged up safely
Event	8	Pre-Job Safety Meeting	Pre-Job Safety Meeting	6/8/2014	08:07:13	USER		8.34		Discussed Job procedure with Customer & Crew
Event	9	Post-Job Safety Meeting (Pre Rig-Down)	Post-Job Safety Meeting (Pre Rig-Down)	6/8/2014	08:07:15	USER		8.38		Discussed trapped pressure and other hazards
Event	10	Rig-Down Equipment	Rig-Down Equipment	6/8/2014	08:07:16	USER		8.38		Rigged down safely
Event	11	Depart Location for Service Center or Other Site	Depart Location for Service Center	6/8/2014	08:07:17	USER		8.38		Job completed safely by M. Dean &
Event	12	Start Job	Start Job	6/8/2014	08:23:51	COM1		8.36		Primed pump and lines. Waited on Rig to swap out bad hose on flow line.
Event	13	Test Lines	Test Lines	6/8/2014	08:52:20	COM1	1152.00	8.38		Tested lines to 1000 psi (pressure held)

Event	14	Pump Spacer 1	Pump Water	6/8/2014	08:58:01	COM1	3.00	8.28	0.00	Pumped 20 bbl of fresh water spacer ahead
Event	15	Pump Lead Cement	Pump Lead Cement	6/8/2014	09:06:18	COM1	50.00	14.2	3.40	Pumped 94 bbl of CMT @ 14.2# (345 sks)
Event	16	Shutdown	Shutdown	6/8/2014	09:36:34	USER	48.00		2.20	Shutdown to drop top plug
Event	17	Drop Top Plug	Drop Top Plug	6/8/2014	09:37:41	USER				Released top plug
Event	18	Pump Displacement	Pump Displacement	6/8/2014	09:39:21	COM1	3.00	8.33		Pumped 63 bbl of fresh water displacement
Event	19	Cement Returns to Surface	Cement Returns to Surface	6/8/2014	10:00:14	USER	268.00	8.32	3.00	4 bbl of CMT returned to Surface
Event	20	Bump Plug	Bump Plug	6/8/2014	10:05:16	COM1	861.00	8.31		Bumped plug @ 280 psi (500 over)
Event	21	Check Floats	Check Floats	6/8/2014	10:07:12	USER	893.00	8.31		.5 bbl back to truck (Floats Held)

2.0 Custom Graphs

2.1 Custom Graph



PS Pump Press (psi) DH Density (ppg) Comb Pump Rate (bbl/min)

ment n/a,n/a,n/a ⑨ Post-Job Safety Meeting (Pre Rig-Down) -1,8.38,0 ⑪ Depart Location for Service Center -1,8.38,0 ⑬ Test Lines 1152,8.38,0 ⑮ Pump Lead Cement 50,8.35,3.4 ⑯ Drop Top Plug 1,13.97,0 ⑰ Cement Returns to Surface 268,8.32,3 21 Check Floats 893,8.31,0
y Meeting -1,8.34,0 ⑫ Rig-Down Equipment -1,8.38,0 ⑭ Start Job 20,8.36,1.3 ⑯ Pump Water 3,8.28,0 ⑰ Shutdown 48,13.88,2.2 ⑱ Pump Displacement 1,13.98,0 20 Bump Plug 861,8.31,0

HALLIBURTON | iCem® Service

Created: 2014-06-08 07:25:17, Version: 3.0.148 Edit

Customer: BILL BARRETT CORPORATION E-BILL Job Date: 6/8/2014 7:32:59 AM Well: 04-62-09-1724CH2
Representative: Charlie Brown Sales Order #: 901411653 Red Tiger #: 11542778

