

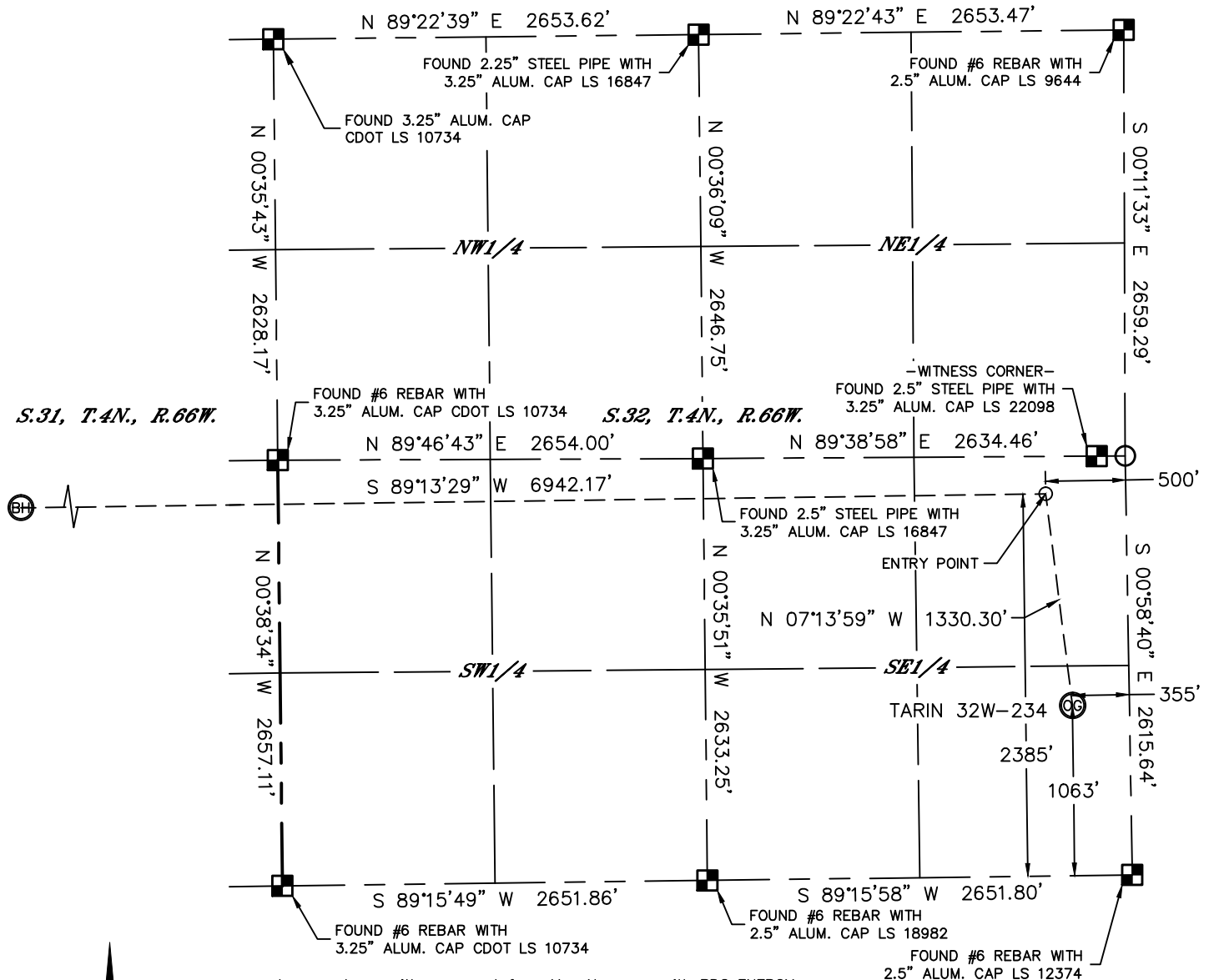


Lat40°, Inc. 1635 Foxtrail Drive, Suite 325 Loveland, CO 970-776-3321

# WELL LOCATION CERTIFICATE

THIS MAP DOES NOT REPRESENT A BOUNDARY SURVEY

SECTION: 32  
TOWNSHIP: 4N  
RANGE: 66W



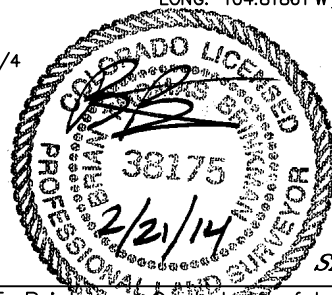
In accordance with a request from Mac Neumann with PDC ENERGY Lat40°, Inc. has determined the surface location of the TARIN 32W-234 to be 1063' from the SOUTH line and 355' from the EAST line as measured at right angles from the section lines of Section 32, Township 4 North, Range 66 West and the bottom hole to be 2385' from the SOUTH line and 2152' from the EAST line as measured at right angles from the section lines of Section 31, Township 4 North, Range 66 West of the Sixth Principal Meridian, County of Weld, State of Colorado.

I hereby state that this Well Location Certificate was prepared by me, or under my direct supervision, that the fieldwork was completed on 12/19/2013, for and on behalf of PDC ENERGY. That this is not a Land Survey Plat or an Improvement Survey Plat, and that it is not to be relied upon for establishment of fence, building, or other future improvement lines.

**SURFACE LOCATION**  
LAT: 40.26381°N  
LONG: 104.79318°W  
PDOP: 3.0  
ELEV: 4774'  
1/4,1/4: SE1/4SE1/4

**BOTTOM HOLE**  
LAT: 40.26733°N  
LONG: 104.81861°W

**ENTRY POINT**  
LAT: 40.26744°N  
LONG: 104.79374°W



SHEET 1 OF 2

## LEGEND

- = ALIQUOT MONUMENT AS DESCRIBED
- = CALCULATED POSITION

Brian T. Brinkman, On Behalf of Lat40°, Inc.  
Colorado Licensed Professional  
Land Surveyor No. 38175  
DATE: 2/18/2014  
PROJECT#: 2013166

## NOTE:

- 1) Bearings shown are Grid Bearings of the Colorado State Plane Coordinate System, North Zone, North American Datum 1983/2007. The lineal dimensions as contained herein are based upon the "U.S. Survey Foot."
- 2) Ground elevations are based on an observed GPS elevation (NAVD 1988 DATUM).
- 3) IMPROVEMENTS: See LOCATION DRAWING for all visible improvements within 500' of disturbed area.
- 4) SURFACE USE: PASTURE
- 5) INSTRUMENT OPERATOR: BRIAN ROTTINGHAUS
- NEAREST CULTURAL ITEMS:  
BUILDING: ±369' NW  
BUILDING UNIT: ±505' NE  
HIGH OCCUPANCY BUILDING UNIT: 5280'+  
DESIGNATED OUTSIDE ACTIVITY AREA: 5280'+  
PUBLIC ROAD: 351' E (CR29)  
ABOVEGROUND UTILITY: 484' NE  
RAILROAD: 695' NW  
PROPERTY LINE: 246' N

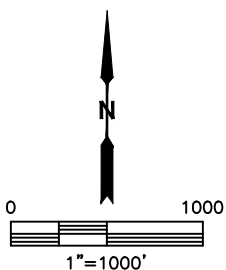
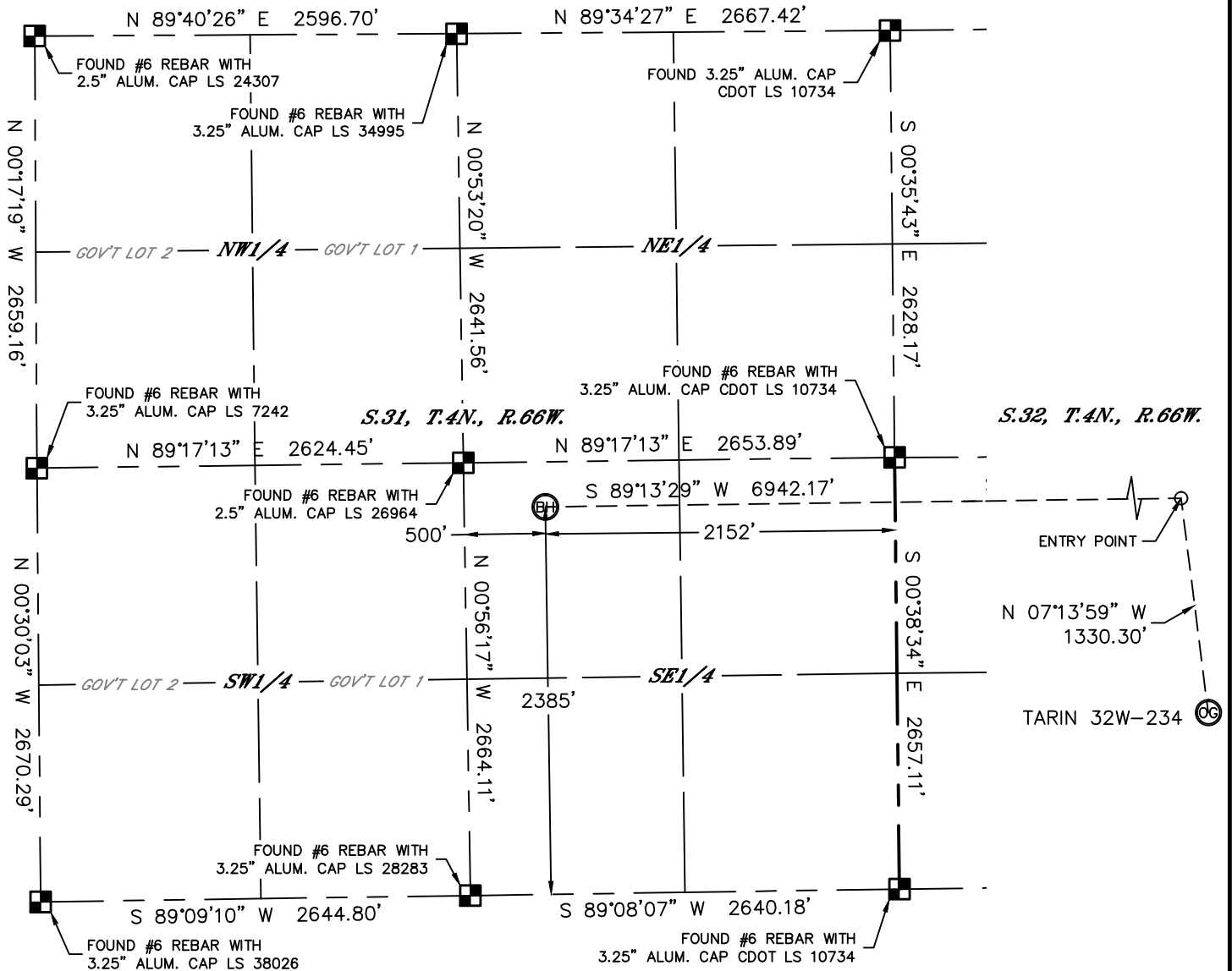


Lat40°, Inc. 1635 Foxtrail Drive, Suite 325 Loveland, CO 970-776-3321

# WELL LOCATION CERTIFICATE

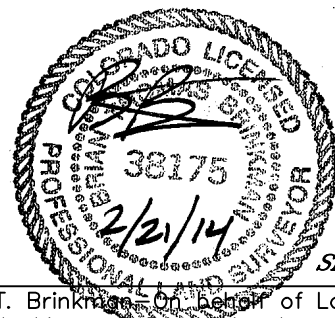
THIS MAP DOES NOT REPRESENT A BOUNDARY SURVEY

SECTION: 32  
TOWNSHIP: 4N  
RANGE: 66W



## LEGEND

- = ALIQUOT MONUMENT AS DESCRIBED
- = CALCULATED POSITION



SHEET 2 OF 2

Brian T. Brinkman, On Behalf of Lat40°, Inc.  
Colorado Licensed Professional  
Land Surveyor No. 38175  
DATE: 2/18/2014  
PROJECT#: 2013166

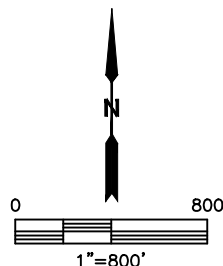
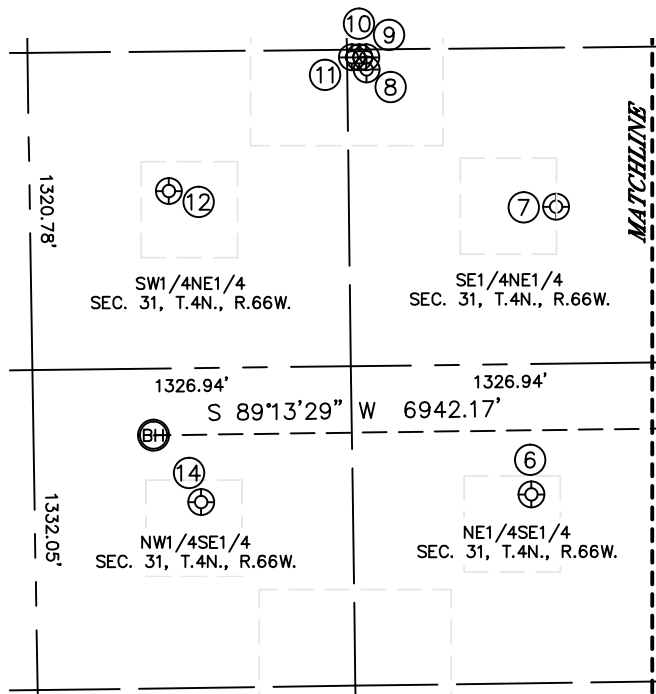
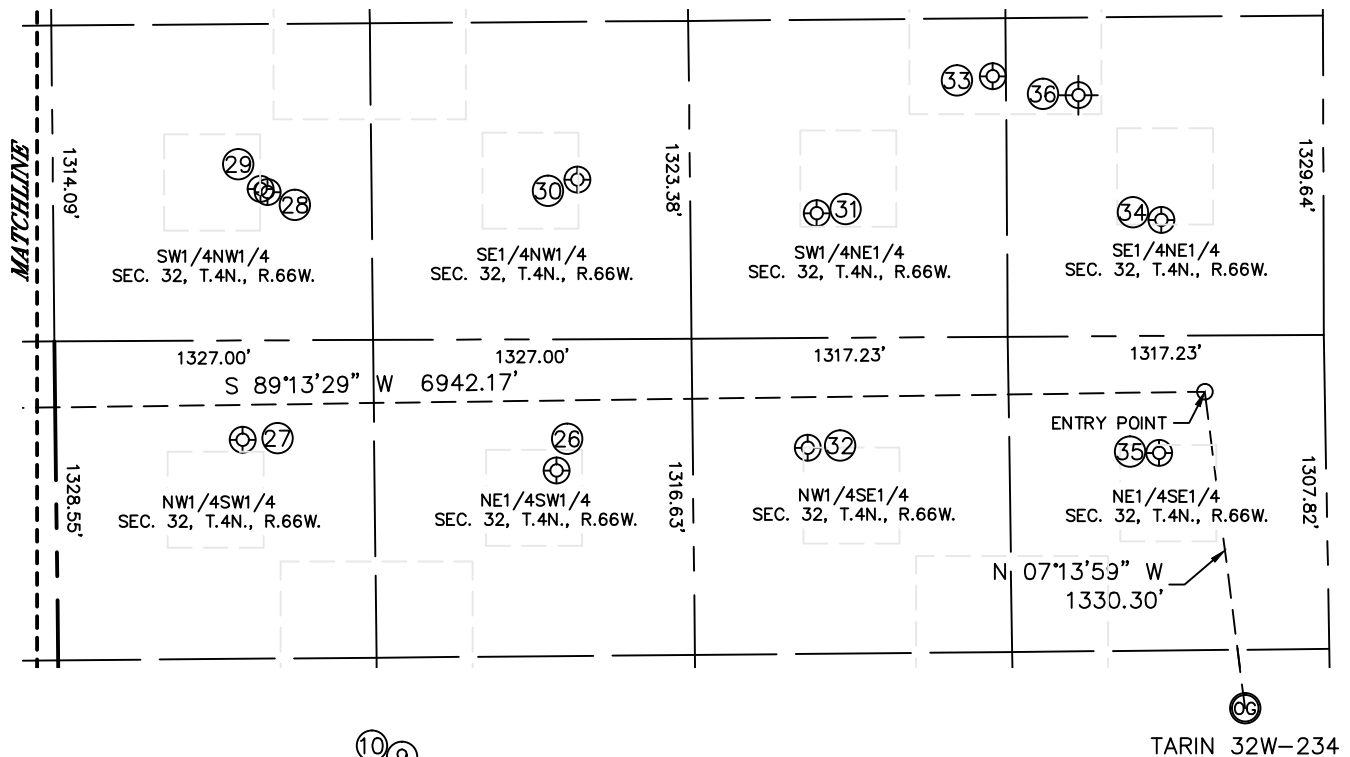


Lat40°, Inc. 1635 Foxtrail Drive, Suite 325 Loveland, CO 970-776-3321

# SITE SKETCH

TARIN 32W-234

SECTION: 32  
TOWNSHIP: 4N  
RANGE: 66W



SHEET 1 OF 2

DATE: 2/18/2014  
PROJECT#: 2013166



Lat40°, Inc. 1635 Foxtrail Drive, Suite 325 Loveland, CO 970-776-3321

## SITE SKETCH

TARIN 32W-234

SECTION: 32  
TOWNSHIP: 4N  
RANGE: 66W

WELL NO.	WELL NAME	SHL FOOTAGE				SHL LAT°	SHL LONG°	PDOP	ELEV (FT.)	1/4/1/4
6	BENJAMIN 1	2115	FSL	582	FEL	40.26662	-104.81298	1.9	4772	NESE
7	WOLF UPRR 42-31 2	1978	FNL	466	FEL	40.26991	-104.81258	2.3	4771	SENE
8	WESTERN 17-31	1400	FNL	1249	FEL	40.27149	-104.81539	1.8	4772	SENE
9	A & W 27-31	1350	FNL	1250	FEL	40.27163	-104.81539	1.9	4773	SENE
10	A & W 25-31	1350	FNL	1279	FEL	40.27163	-104.81549	1.6	4773	SENE
11	A & W 21-31	1350	FNL	1310	FEL	40.27163	-104.81561	1.6	4773	SENE
12	WOLF UPRR 32-31	1900	FNL	2079	FEL	40.27012	-104.81835	2.2	4772	SWNE
14	NICHOLAS 1	2104	FSL	1958	FEL	40.26656	-104.81791	1.7	4776	NWSE
26	CADI 1	2092	FSL	2085	FWL	40.26660	-104.80343	2.0	4773	NESW
27	WOLFE 13-32	2237	FSL	778	FWL	40.26698	-104.80811	2.1	4771	NWSW
28	FRANK 32-23	2017	FNL	894	FWL	40.26981	-104.80771	2.1	4772	SWNW
29	FRANK 6LL	2004	FNL	864	FWL	40.26984	-104.80781	1.6	4771	SWNW
30	FRANK 32-24	1979	FNL	2185	FWL	40.26992	-104.80308	1.9	4773	SENW
31	AGRICULTURAL PROD INC FEDERAL 32-7F	2130	FNL	2111	FEL	40.26952	-104.79951	1.9	4767	SWNE
32	COREY 31-32	2173	FSL	2159	FEL	40.26683	-104.79967	1.9	4767	NWSE
33	AGRICULTURAL PROD FEDERAL 32-17	1568	FNL	1376	FEL	40.27106	-104.79687	1.9	4764	SWNE
34	AGRICULTURAL PROD INC FEDERAL 32-8F	2174	FNL	677	FEL	40.26941	-104.79437	2.2	4764	SENE
35	FLOYD 1	2132	FSL	696	FEL	40.26674	-104.79443	2.1	4768	NESE
36	DEROO WILFRED 1	1650	FNL	1020	FEL	40.27064	-104.79566	N/A	4759	SENE

NOTE: THE ABANDONED WELL DATA SHOWN IN RED ABOVE WAS OBTAINED FROM COGCC SCOUT CARDS.

*SHEET 2 OF 2*

DATE: 2/18/2014  
PROJECT#: 2013166