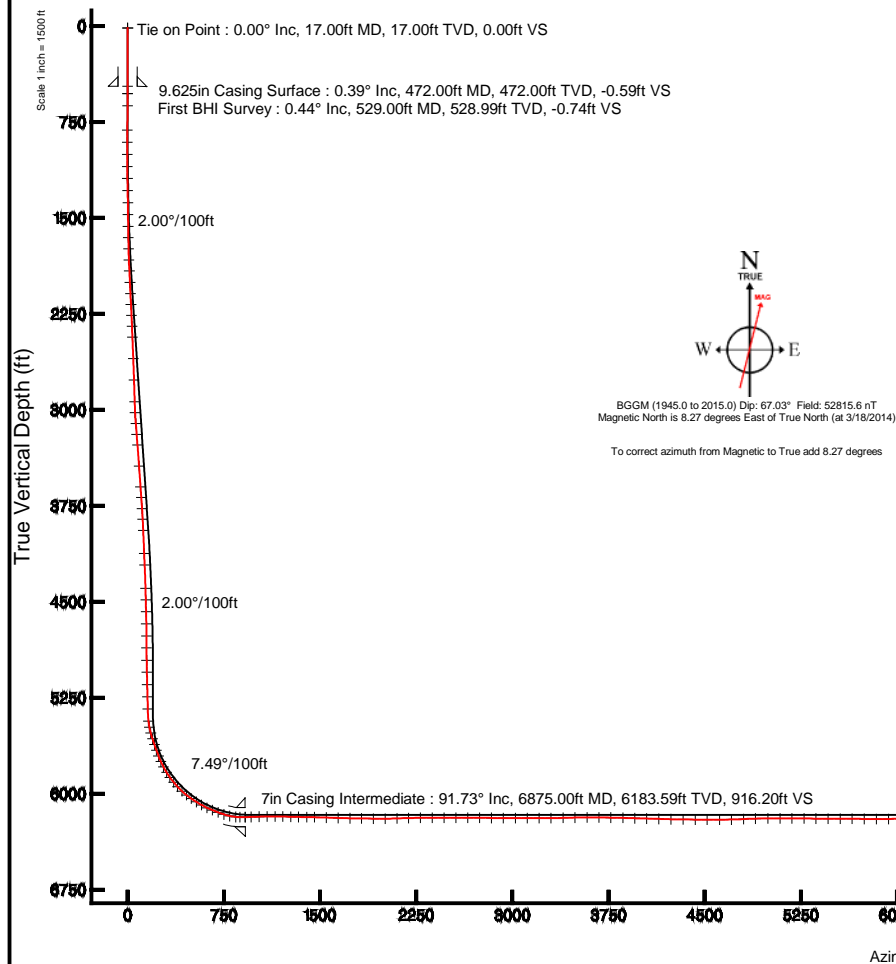
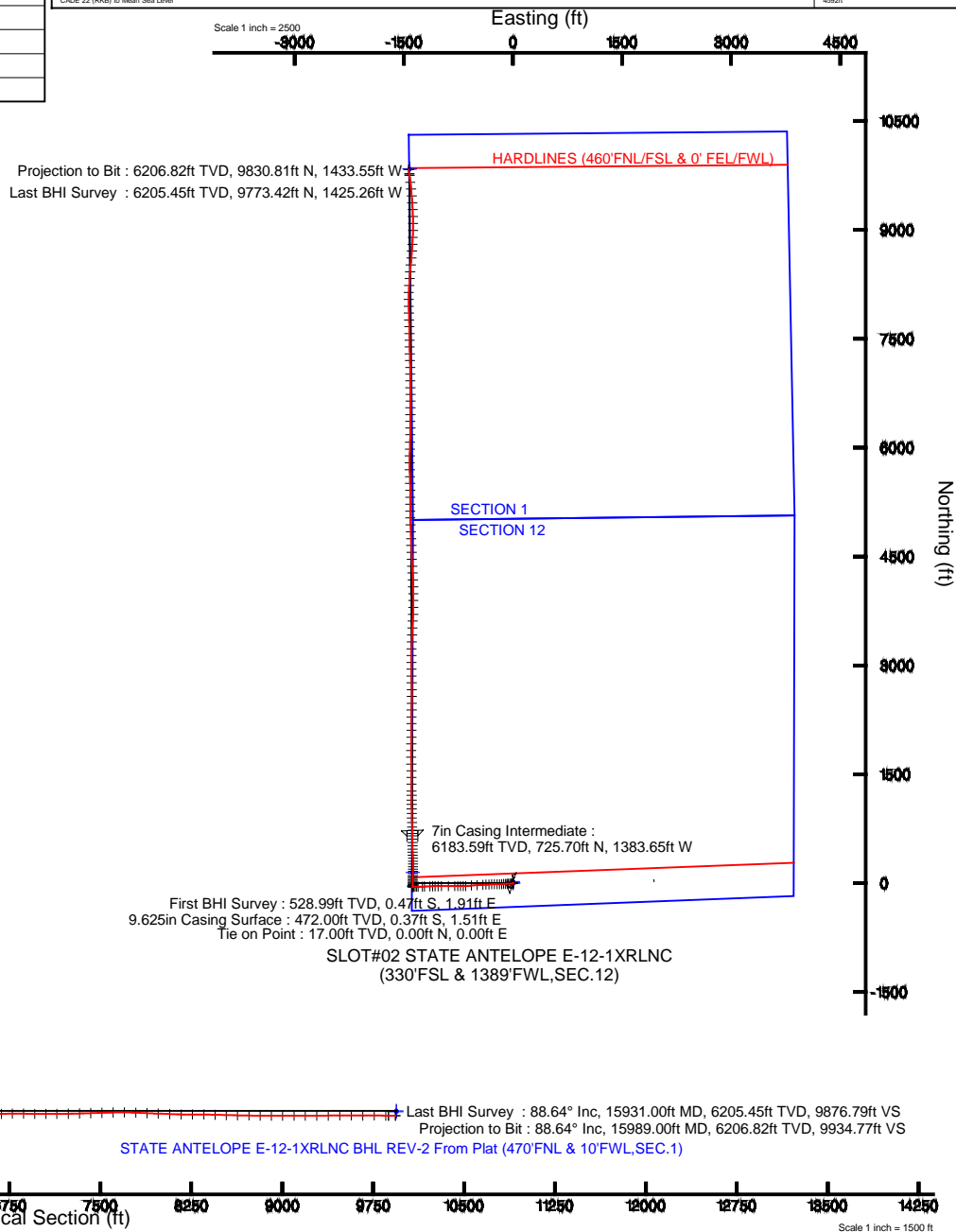


Location:	COLORADO	Slot:	SLOT#02 STATE ANTELOPE E-12-1XRLNC (330'FSL & 1389'FWL, SEC.12)
Field:	WELD COUNTY	Well:	STATE ANTELOPE E-12-1XRLNC
Facility:	SEC.12-T5N-R62W	Wellbore:	STATE ANTELOPE E-12-1XRLNC PWB

Plot reference wellpath is STATE ANTELOPE E-12-1XRLNC (REV-C.0) PWP	
True vertical depths are referenced to CADE 22 (RKB)	Grid System: NAD83 / Lambert Colorado SP, Northern Zone (501), US feet
Measured depths are referenced to CADE 22 (RKB)	North Reference: True north
CADE 22 (RKB) to Mean Sea Level: 4592 feet	Scale: True distance
Mean Sea Level to Mud line (At Slot: SLOT02 STATE ANTELOPE E-12-1XRLNC (330FSL & 1389FWL,SEC.12): 0 feet	Depths are in feet
Coordinates are in feet referenced to Slot	Created by: gneulater on 7/18/2014



Location Information						
Facility Name			Grid East (US Ft)	Grid North (US Ft)	Latitude	Longitude
SEC. 12-TSN-R62W			3340007.222	1364206.948	40°2'32.544"N	104°16'32.736"W
Slot	Local N (ft)	Local E (ft)	Grid East (US Ft)	Grid North (US Ft)	Latitude	Longitude
SLOT#02 STATE ANTELOPE E-12-1XRLNC (330°FSL & 1389°FWL,SEC.12)	-21.86	-0.00	3340007.523	1364185.052	40°2'43.328"N	104°16'32.736"W
CADE 22 (R6B) to Mud line (At Slot: SLOT#02 STATE ANTELOPE E-12-1XRLNC (330°FSL & 1389°FWL,SEC.12))					4592ft	
Mean Sea Level to Mud line (At Slot: SLOT#02 STATE ANTELOPE E-12-1XRLNC (330°FSL & 1389°FWL,SEC.12))					0ft	
CADE 22 (R6B) to Mean Sea Level					4592ft	





Actual Wellpath Report

STATE ANTELOPE E-12-1XRLNC AWP

Page 1 of 9



REFERENCE WELLPATH IDENTIFICATION

Operator	BONANZA CREEK OIL COMPANY	Slot	SLOT#02 STATE ANTELOPE E-12-1XRLNC (330'FSL & 1389'FWL,SEC.12)
Area	COLORADO	Well	STATE ANTELOPE E-12-1XRLNC
Field	WELD COUNTY	Wellbore	STATE ANTELOPE E-12-1XRLNC AWB
Facility	SEC.12-T5N-R62W		

REPORT SETUP INFORMATION

Projection System	NAD83 / Lambert Colorado SP, Northern Zone (501), US feet	Software System	WellArchitect® 4.0.0
North Reference	True	User	Guenaler
Scale	0.999961	Report Generated	7/18/2014 at 10:58:13 AM
Convergence at slot	n/a	Database/Source file	WA_Denver/STATE_ANTELOPE_E-12-1XRLNC_AWB.xml

WELLPATH LOCATION

	Local coordinates		Grid coordinates		Geographic coordinates	
	North[ft]	East[ft]	Easting[US ft]	Northing[US ft]	Latitude	Longitude
Slot Location	-21.86	-0.00	3340907.52	1394185.09	40°24'32.328"N	104°16'32.736"W
Facility Reference Pt			3340907.22	1394206.95	40°24'32.544"N	104°16'32.736"W
Field Reference Pt			3327718.19	1377782.99	40°21'52.020"N	104°19'26.040"W

WELLPATH DATUM

Calculation method	Minimum curvature	CADE 22 (RKB) to Facility Vertical Datum	4592.00ft
Horizontal Reference Pt	Slot	CADE 22 (RKB) to Mean Sea Level	4592.00ft
Vertical Reference Pt	CADE 22 (RKB)	CADE 22 (RKB) to Mud Line at Slot (SLOT#02 STATE ANTELOPE E-12-1XRLNC (330'FSL & 1389'FWL,SEC.12))	4592.00ft
MD Reference Pt	CADE 22 (RKB)	Section Origin	N 0.00, E 0.00 ft
Field Vertical Reference	Mean Sea Level	Section Azimuth	351.70°



Actual Wellpath Report

STATE ANTELOPE E-12-1XRLNC AWP

Page 2 of 9



REFERENCE WELLPATH IDENTIFICATION			
Operator	BONANZA CREEK OIL COMPANY	Slot	SLOT#02 STATE ANTELOPE E-12-1XRLNC (330'FSL & 1389'FWL,SEC.12)
Area	COLORADO	Well	STATE ANTELOPE E-12-1XRLNC
Field	WELD COUNTY	Wellbore	STATE ANTELOPE E-12-1XRLNC AWB
Facility	SEC.12-T5N-R62W		

WELLPATH DATA (176 stations) † = interpolated/extrapolated station										
MD [ft]	Inclination [°]	Azimuth [°]	TVD [ft]	Vert Sect [ft]	North [ft]	East [ft]	Latitude	Longitude	DLS [°/100ft]	Comments
0.00†	0.000	103.950	0.00	0.00	0.00	0.00	40°24'32.328"N	104°16'32.736"W	0.00	
17.00	0.000	103.950	17.00	0.00	0.00	0.00	40°24'32.328"N	104°16'32.736"W	0.00	Tie on Point
529.00	0.440	103.950	528.99	-0.74	-0.47	1.91	40°24'32.323"N	104°16'32.711"W	0.09	First BHI Survey
623.00	0.470	158.090	622.99	-1.26	-0.92	2.40	40°24'32.319"N	104°16'32.705"W	0.44	
813.00	0.390	183.130	812.99	-2.65	-2.29	2.66	40°24'32.305"N	104°16'32.702"W	0.11	
908.00	1.510	242.390	907.97	-3.38	-3.19	1.53	40°24'32.296"N	104°16'32.716"W	1.42	
1003.00	2.820	259.340	1002.91	-3.89	-4.20	-1.88	40°24'32.286"N	104°16'32.760"W	1.52	
1098.00	4.750	267.980	1097.69	-3.55	-4.77	-8.10	40°24'32.281"N	104°16'32.841"W	2.11	
1193.00	6.780	269.180	1192.21	-2.39	-4.99	-17.64	40°24'32.279"N	104°16'32.964"W	2.14	
1288.00	8.070	269.390	1286.41	-0.77	-5.14	-29.92	40°24'32.277"N	104°16'33.123"W	1.36	
1383.00	9.780	268.580	1380.26	1.09	-5.41	-44.65	40°24'32.274"N	104°16'33.313"W	1.80	
1478.00	11.250	264.100	1473.66	2.44	-6.57	-61.94	40°24'32.263"N	104°16'33.537"W	1.77	
1573.00	12.840	263.980	1566.57	3.25	-8.63	-81.65	40°24'32.243"N	104°16'33.792"W	1.67	
1664.00	15.140	268.290	1654.86	5.01	-10.04	-103.59	40°24'32.229"N	104°16'34.075"W	2.77	
1755.00	17.040	263.630	1742.30	6.82	-11.88	-128.72	40°24'32.211"N	104°16'34.400"W	2.52	
1846.00	18.160	269.170	1829.04	9.11	-13.56	-156.16	40°24'32.194"N	104°16'34.755"W	2.21	
1937.00	19.390	270.440	1915.20	13.25	-13.65	-185.44	40°24'32.193"N	104°16'35.133"W	1.42	
2033.00	21.320	268.790	2005.20	17.82	-13.90	-218.83	40°24'32.191"N	104°16'35.565"W	2.10	
2127.00	22.930	267.300	2092.28	21.72	-15.12	-254.21	40°24'32.179"N	104°16'36.022"W	1.81	
2220.00	24.630	268.610	2177.38	25.82	-16.44	-291.68	40°24'32.165"N	104°16'36.507"W	1.91	
2314.00	25.720	267.280	2262.45	30.15	-17.89	-331.64	40°24'32.151"N	104°16'37.023"W	1.31	
2408.00	25.260	266.650	2347.30	33.87	-20.03	-372.04	40°24'32.130"N	104°16'37.545"W	0.57	
2501.00	25.390	266.370	2431.36	37.20	-22.45	-411.74	40°24'32.106"N	104°16'38.059"W	0.19	
2688.00	25.490	266.420	2600.23	43.77	-27.50	-491.91	40°24'32.056"N	104°16'39.095"W	0.05	
2874.00	25.960	265.580	2767.80	49.81	-33.14	-572.45	40°24'32.000"N	104°16'40.136"W	0.32	
3060.00	22.860	265.770	2937.15	55.13	-38.94	-649.08	40°24'31.943"N	104°16'41.127"W	1.67	
3152.00	23.070	268.340	3021.86	58.48	-40.78	-684.92	40°24'31.925"N	104°16'41.590"W	1.11	
3245.00	23.570	272.810	3107.27	64.17	-40.40	-721.71	40°24'31.929"N	104°16'42.066"W	1.98	
3338.00	24.660	271.040	3192.15	70.90	-39.13	-759.68	40°24'31.941"N	104°16'42.556"W	1.41	
3431.00	27.570	269.770	3275.65	77.06	-38.87	-800.61	40°24'31.944"N	104°16'43.086"W	3.19	



Actual Wellpath Report

STATE ANTELOPE E-12-1XRLNC AWP

Page 3 of 9



REFERENCE WELLPATH IDENTIFICATION			
Operator	BONANZA CREEK OIL COMPANY	Slot	SLOT#02 STATE ANTELOPE E-12-1XRLNC (330'FSL & 1389'FWL,SEC.12)
Area	COLORADO	Well	STATE ANTELOPE E-12-1XRLNC
Field	WELD COUNTY	Wellbore	STATE ANTELOPE E-12-1XRLNC AWB
Facility	SEC.12-T5N-R62W		

WELLPATH DATA (176 stations)										
MD [ft]	Inclination [°]	Azimuth [°]	TVD [ft]	Vert Sect [ft]	North [ft]	East [ft]	Latitude	Longitude	DLS [°/100ft]	Comments
3617.00	29.540	269.490	3439.02	89.32	-39.45	-889.52	40°24'31.938"N	104°16'44.235"W	1.06	
3804.00	29.850	268.260	3601.46	100.88	-41.27	-982.13	40°24'31.920"N	104°16'45.432"W	0.37	
3900.00	27.100	270.400	3685.84	106.91	-41.84	-1027.89	40°24'31.914"N	104°16'46.024"W	3.05	
3995.00	24.240	269.590	3771.45	112.86	-41.83	-1069.03	40°24'31.914"N	104°16'46.555"W	3.03	
4086.00	23.210	269.190	3854.76	117.76	-42.22	-1105.64	40°24'31.911"N	104°16'47.029"W	1.15	
4181.00	22.030	268.080	3942.45	122.18	-43.08	-1142.17	40°24'31.902"N	104°16'47.501"W	1.32	
4375.00	21.570	267.210	4122.58	129.64	-46.04	-1214.15	40°24'31.873"N	104°16'48.431"W	0.29	
4470.00	19.320	269.510	4211.59	133.45	-47.02	-1247.31	40°24'31.863"N	104°16'48.860"W	2.51	
4661.00	14.270	267.520	4394.39	140.13	-48.31	-1302.46	40°24'31.850"N	104°16'49.573"W	2.66	
4755.00	12.870	267.140	4485.76	142.30	-49.33	-1324.49	40°24'31.840"N	104°16'49.858"W	1.49	
4850.00	10.570	270.530	4578.78	144.64	-49.78	-1343.78	40°24'31.836"N	104°16'50.107"W	2.53	
4945.00	8.800	270.580	4672.42	147.10	-49.63	-1359.76	40°24'31.837"N	104°16'50.314"W	1.86	
5040.00	5.630	260.670	4766.66	148.14	-50.31	-1371.62	40°24'31.830"N	104°16'50.467"W	3.57	
5135.00	2.760	270.280	4861.39	148.39	-51.05	-1378.51	40°24'31.823"N	104°16'50.556"W	3.10	
5231.00	1.010	325.420	4957.34	149.50	-50.35	-1381.30	40°24'31.830"N	104°16'50.592"W	2.43	
5325.00	1.500	6.720	5051.32	151.43	-48.44	-1381.63	40°24'31.849"N	104°16'50.596"W	1.06	
5421.00	1.400	11.570	5147.29	153.74	-46.05	-1381.25	40°24'31.873"N	104°16'50.591"W	0.16	
5516.00	1.330	355.710	5242.27	155.94	-43.81	-1381.10	40°24'31.895"N	104°16'50.590"W	0.40	
5611.00	1.440	6.230	5337.24	158.19	-41.52	-1381.05	40°24'31.917"N	104°16'50.589"W	0.29	
5706.00	5.520	2.230	5432.04	163.84	-35.77	-1380.74	40°24'31.974"N	104°16'50.585"W	4.30	
5754.00	11.450	2.760	5479.50	170.79	-28.70	-1380.42	40°24'32.044"N	104°16'50.581"W	12.36	
5801.00	15.650	4.280	5525.18	181.56	-17.71	-1379.73	40°24'32.153"N	104°16'50.572"W	8.97	
5849.00	17.650	3.020	5571.16	195.02	-3.99	-1378.86	40°24'32.288"N	104°16'50.561"W	4.23	
5896.00	19.470	2.190	5615.72	209.71	10.96	-1378.18	40°24'32.436"N	104°16'50.552"W	3.91	
5944.00	19.840	1.240	5660.92	225.61	27.10	-1377.70	40°24'32.595"N	104°16'50.546"W	1.02	
5991.00	21.260	0.270	5704.93	241.90	43.59	-1377.49	40°24'32.758"N	104°16'50.543"W	3.11	
6039.00	24.380	0.330	5749.17	260.31	62.20	-1377.39	40°24'32.942"N	104°16'50.542"W	6.50	
6086.00	28.180	1.480	5791.30	280.84	83.01	-1377.05	40°24'33.148"N	104°16'50.537"W	8.16	
6134.00	31.960	0.860	5832.83	304.56	107.05	-1376.57	40°24'33.385"N	104°16'50.531"W	7.90	
6182.00	35.490	2.570	5872.75	330.79	133.68	-1375.75	40°24'33.649"N	104°16'50.521"W	7.61	



Actual Wellpath Report

STATE ANTELOPE E-12-1XRLNC AWP

Page 4 of 9



REFERENCE WELLPATH IDENTIFICATION			
Operator	BONANZA CREEK OIL COMPANY	Slot	SLOT#02 STATE ANTELOPE E-12-1XRLNC (330'FSL & 1389'FWL,SEC.12)
Area	COLORADO	Well	STATE ANTELOPE E-12-1XRLNC
Field	WELD COUNTY	Wellbore	STATE ANTELOPE E-12-1XRLNC AWB
Facility	SEC.12-T5N-R62W		

WELLPATH DATA (176 stations)										
MD [ft]	Inclination [°]	Azimuth [°]	TVD [ft]	Vert Sect [ft]	North [ft]	East [ft]	Latitude	Longitude	DLS [°/100ft]	Comments
6230.00	39.480	1.400	5910.83	359.53	162.87	-1374.75	40°24'33.937"N	104°16'50.508"W	8.44	
6277.00	43.490	359.970	5946.03	390.28	193.99	-1374.39	40°24'34.245"N	104°16'50.503"W	8.77	
6325.00	47.620	0.280	5979.64	424.17	228.25	-1374.32	40°24'34.583"N	104°16'50.502"W	8.62	
6372.00	51.340	359.870	6010.17	459.51	263.97	-1374.27	40°24'34.936"N	104°16'50.502"W	7.94	
6420.00	55.580	0.000	6038.74	497.67	302.53	-1374.32	40°24'35.317"N	104°16'50.502"W	8.84	
6467.00	58.360	357.940	6064.36	536.75	341.92	-1375.04	40°24'35.706"N	104°16'50.511"W	6.96	
6515.00	61.070	354.870	6088.57	578.05	383.27	-1377.65	40°24'36.115"N	104°16'50.545"W	7.90	
6562.00	64.400	358.470	6110.10	619.66	424.97	-1380.06	40°24'36.527"N	104°16'50.576"W	9.82	
6610.00	68.750	0.050	6129.18	663.30	469.00	-1380.61	40°24'36.962"N	104°16'50.584"W	9.55	
6657.00	69.440	359.890	6145.95	706.75	512.90	-1380.64	40°24'37.396"N	104°16'50.584"W	1.50	
6705.00	71.610	0.000	6161.95	751.54	558.15	-1380.68	40°24'37.843"N	104°16'50.585"W	4.53	
6753.00	77.610	359.730	6174.68	797.33	604.41	-1380.79	40°24'38.300"N	104°16'50.586"W	12.51	
6801.00	84.630	358.930	6182.09	844.30	651.80	-1381.35	40°24'38.768"N	104°16'50.593"W	14.72	
6833.00	89.010	358.160	6183.86	876.02	683.73	-1382.16	40°24'39.084"N	104°16'50.604"W	13.90	
6877.00	91.860	357.740	6183.53	919.75	727.70	-1383.73	40°24'39.518"N	104°16'50.624"W	6.55	
6922.00	92.280	357.620	6181.90	964.48	772.63	-1385.55	40°24'39.962"N	104°16'50.648"W	0.97	
6985.00	91.320	357.770	6179.93	1027.10	835.55	-1388.09	40°24'40.584"N	104°16'50.681"W	1.54	
7047.00	90.710	358.060	6178.83	1088.73	897.50	-1390.34	40°24'41.196"N	104°16'50.710"W	1.09	
7109.00	89.970	359.000	6178.46	1150.29	959.48	-1391.93	40°24'41.809"N	104°16'50.730"W	1.93	
7171.00	89.040	359.450	6179.00	1211.75	1021.47	-1392.77	40°24'42.421"N	104°16'50.741"W	1.67	
7233.00	88.290	359.670	6180.44	1273.15	1083.45	-1393.25	40°24'43.034"N	104°16'50.747"W	1.26	
7295.00	88.890	0.170	6181.97	1334.49	1145.43	-1393.33	40°24'43.646"N	104°16'50.749"W	1.26	
7360.00	89.080	359.580	6183.12	1398.82	1210.42	-1393.47	40°24'44.289"N	104°16'50.750"W	0.95	
7419.00	88.630	359.390	6184.30	1457.27	1269.40	-1394.00	40°24'44.871"N	104°16'50.757"W	0.83	
7513.00	88.060	359.560	6187.01	1550.37	1363.36	-1394.87	40°24'45.800"N	104°16'50.769"W	0.63	
7606.00	88.350	359.840	6189.92	1642.42	1456.31	-1395.35	40°24'46.718"N	104°16'50.775"W	0.43	
7699.00	88.740	359.390	6192.29	1734.50	1549.28	-1395.98	40°24'47.637"N	104°16'50.783"W	0.64	
7791.00	89.510	359.570	6193.69	1825.64	1641.27	-1396.81	40°24'48.546"N	104°16'50.794"W	0.86	
7885.00	88.670	359.020	6195.18	1918.81	1735.25	-1397.97	40°24'49.475"N	104°16'50.809"W	1.07	
7978.00	90.890	1.190	6195.54	2010.80	1828.23	-1397.80	40°24'50.394"N	104°16'50.807"W	3.34	



Actual Wellpath Report

STATE ANTELOPE E-12-1XRLNC AWP

Page 5 of 9



REFERENCE WELLPATH IDENTIFICATION			
Operator	BONANZA CREEK OIL COMPANY	Slot	SLOT#02 STATE ANTELOPE E-12-1XRLNC (330'FSL & 1389'FWL,SEC.12)
Area	COLORADO	Well	STATE ANTELOPE E-12-1XRLNC
Field	WELD COUNTY	Wellbore	STATE ANTELOPE E-12-1XRLNC AWB
Facility	SEC.12-T5N-R62W		

WELLPATH DATA (176 stations)										
MD [ft]	Inclination [°]	Azimuth [°]	TVD [ft]	Vert Sect [ft]	North [ft]	East [ft]	Latitude	Longitude	DLS [°/100ft]	Comments
8070.00	91.790	0.190	6193.39	2101.64	1920.20	-1396.69	40°24'51.302"N	104°16'50.793"W	1.46	
8162.00	91.660	0.810	6190.62	2192.52	2012.15	-1395.89	40°24'52.211"N	104°16'50.782"W	0.69	
8255.00	90.430	0.440	6188.92	2284.37	2105.13	-1394.87	40°24'53.130"N	104°16'50.769"W	1.38	
8349.00	90.400	359.970	6188.24	2377.34	2199.13	-1394.54	40°24'54.059"N	104°16'50.765"W	0.50	
8441.00	89.780	0.540	6188.10	2468.31	2291.13	-1394.13	40°24'54.968"N	104°16'50.760"W	0.92	
8535.00	89.880	0.580	6188.38	2561.19	2385.12	-1393.21	40°24'55.896"N	104°16'50.748"W	0.11	
8628.00	89.910	0.690	6188.55	2653.07	2478.11	-1392.18	40°24'56.815"N	104°16'50.735"W	0.12	
8722.00	89.600	0.410	6188.95	2745.95	2572.11	-1391.28	40°24'57.744"N	104°16'50.723"W	0.44	
8815.00	89.380	359.600	6189.78	2837.97	2665.10	-1391.27	40°24'58.663"N	104°16'50.723"W	0.90	
8909.00	89.480	358.740	6190.71	2931.17	2759.09	-1392.63	40°24'59.592"N	104°16'50.741"W	0.92	
9003.00	89.440	358.450	6191.60	3024.48	2853.06	-1394.93	40°25'00.520"N	104°16'50.771"W	0.31	
9097.00	90.460	359.950	6191.68	3117.67	2947.04	-1396.25	40°25'01.449"N	104°16'50.788"W	1.93	
9190.00	90.680	359.940	6190.75	3209.71	3040.04	-1396.34	40°25'02.368"N	104°16'50.789"W	0.24	
9285.00	89.750	0.320	6190.40	3303.68	3135.04	-1396.12	40°25'03.307"N	104°16'50.786"W	1.06	
9380.00	91.660	1.580	6189.23	3397.43	3230.01	-1394.55	40°25'04.245"N	104°16'50.766"W	2.41	
9475.00	91.140	2.820	6186.91	3490.81	3324.91	-1390.90	40°25'05.183"N	104°16'50.719"W	1.42	
9570.00	90.600	1.630	6185.47	3584.20	3419.83	-1387.21	40°25'06.121"N	104°16'50.671"W	1.38	
9665.00	89.020	3.090	6185.78	3677.56	3514.74	-1383.30	40°25'07.059"N	104°16'50.621"W	2.26	
9760.00	89.190	3.740	6187.26	3770.57	3609.56	-1377.64	40°25'07.996"N	104°16'50.548"W	0.71	
9855.00	88.420	2.490	6189.25	3863.67	3704.39	-1372.48	40°25'08.933"N	104°16'50.481"W	1.55	
9950.00	88.190	1.060	6192.06	3957.16	3799.30	-1369.54	40°25'09.871"N	104°16'50.443"W	1.52	
10044.00	88.700	359.560	6194.61	4050.07	3893.27	-1369.03	40°25'10.799"N	104°16'50.436"W	1.68	
10139.00	88.270	359.460	6197.12	4144.15	3988.23	-1369.84	40°25'11.738"N	104°16'50.447"W	0.46	
10234.00	88.520	357.780	6199.78	4238.42	4083.16	-1372.13	40°25'12.676"N	104°16'50.477"W	1.79	
10329.00	89.390	357.590	6201.51	4332.89	4178.07	-1375.97	40°25'13.614"N	104°16'50.526"W	0.94	
10424.00	89.510	357.450	6202.42	4427.39	4272.97	-1380.08	40°25'14.551"N	104°16'50.579"W	0.19	
10518.00	89.810	356.730	6202.98	4520.98	4366.85	-1384.85	40°25'15.479"N	104°16'50.641"W	0.83	
10615.00	90.190	357.680	6202.98	4617.53	4463.73	-1389.58	40°25'16.436"N	104°16'50.702"W	1.05	
10708.00	91.200	357.840	6201.85	4710.00	4556.65	-1393.21	40°25'17.355"N	104°16'50.750"W	1.10	
10803.00	92.650	358.110	6198.66	4804.38	4651.54	-1396.57	40°25'18.292"N	104°16'50.793"W	1.55	



Actual Wellpath Report

STATE ANTELOPE E-12-1XRLNC AWP

Page 6 of 9



REFERENCE WELLPATH IDENTIFICATION			
Operator	BONANZA CREEK OIL COMPANY	Slot	SLOT#02 STATE ANTELOPE E-12-1XRLNC (330'FSL & 1389'FWL,SEC.12)
Area	COLORADO	Well	STATE ANTELOPE E-12-1XRLNC
Field	WELD COUNTY	Wellbore	STATE ANTELOPE E-12-1XRLNC AWB
Facility	SEC.12-T5N-R62W		

WELLPATH DATA (176 stations)										
MD [ft]	Inclination [°]	Azimuth [°]	TVD [ft]	Vert Sect [ft]	North [ft]	East [ft]	Latitude	Longitude	DLS [°/100ft]	Comments
10898.00	91.730	357.530	6195.03	4898.77	4746.40	-1400.18	40°25'19.230"N	104°16'50.840"W	1.14	
10994.00	90.340	358.900	6193.30	4994.13	4842.33	-1403.17	40°25'20.178"N	104°16'50.878"W	2.03	
11089.00	89.660	357.370	6193.30	5088.52	4937.28	-1406.26	40°25'21.116"N	104°16'50.919"W	1.76	
11184.00	89.690	357.650	6193.84	5183.04	5032.19	-1410.39	40°25'22.054"N	104°16'50.972"W	0.30	
11278.00	89.810	0.380	6194.25	5276.26	5126.16	-1412.00	40°25'22.982"N	104°16'50.993"W	2.91	
11373.00	89.380	359.410	6194.92	5370.29	5221.16	-1412.18	40°25'23.921"N	104°16'50.995"W	1.12	
11468.00	89.630	0.060	6195.74	5464.35	5316.15	-1412.62	40°25'24.860"N	104°16'51.001"W	0.73	
11563.00	90.060	0.210	6196.00	5558.33	5411.15	-1412.39	40°25'25.798"N	104°16'50.998"W	0.48	
11658.00	89.450	358.080	6196.40	5652.52	5506.14	-1413.81	40°25'26.737"N	104°16'51.017"W	2.33	
11753.00	89.350	358.580	6197.40	5746.88	5601.09	-1416.58	40°25'27.675"N	104°16'51.052"W	0.54	
11848.00	89.660	359.110	6198.22	5841.14	5696.07	-1418.50	40°25'28.614"N	104°16'51.077"W	0.65	
11943.00	91.110	0.400	6197.58	5935.19	5791.06	-1418.90	40°25'29.553"N	104°16'51.083"W	2.04	
12038.00	91.200	0.150	6195.67	6029.11	5886.04	-1418.45	40°25'30.491"N	104°16'51.077"W	0.28	
12133.00	90.030	1.730	6194.65	6122.87	5981.02	-1416.89	40°25'31.430"N	104°16'51.057"W	2.07	
12229.00	90.340	0.980	6194.34	6217.51	6076.99	-1414.62	40°25'32.378"N	104°16'51.027"W	0.85	
12330.00	92.010	2.330	6192.26	6316.97	6177.92	-1411.70	40°25'33.375"N	104°16'50.990"W	2.13	
12423.00	91.270	0.000	6189.60	6408.66	6270.85	-1409.81	40°25'34.294"N	104°16'50.965"W	2.63	
12516.00	88.860	359.520	6189.50	6500.73	6363.85	-1410.20	40°25'35.213"N	104°16'50.970"W	2.64	
12608.00	90.120	0.720	6190.32	6591.73	6455.84	-1410.01	40°25'36.122"N	104°16'50.968"W	1.89	
12701.00	90.150	0.110	6190.10	6683.66	6548.83	-1409.33	40°25'37.041"N	104°16'50.959"W	0.66	
12794.00	91.050	0.970	6189.12	6775.55	6641.82	-1408.46	40°25'37.959"N	104°16'50.948"W	1.34	
12887.00	88.880	359.250	6189.18	6867.54	6734.81	-1408.28	40°25'38.878"N	104°16'50.946"W	2.98	
12979.00	89.320	359.220	6190.63	6958.74	6826.79	-1409.51	40°25'39.787"N	104°16'50.962"W	0.48	
13072.00	89.630	359.260	6191.48	7050.93	6919.78	-1410.74	40°25'40.706"N	104°16'50.978"W	0.34	
13164.00	90.430	359.100	6191.43	7142.15	7011.77	-1412.06	40°25'41.615"N	104°16'50.995"W	0.89	
13258.00	91.550	359.640	6189.80	7235.29	7105.75	-1413.09	40°25'42.544"N	104°16'51.008"W	1.32	
13351.00	91.480	358.190	6187.35	7327.52	7198.70	-1414.85	40°25'43.462"N	104°16'51.031"W	1.56	
13445.00	91.510	358.600	6184.89	7420.85	7292.63	-1417.48	40°25'44.390"N	104°16'51.065"W	0.44	
13539.00	91.880	359.250	6182.11	7514.06	7386.57	-1419.25	40°25'45.319"N	104°16'51.088"W	0.80	
13632.00	91.510	359.020	6179.36	7606.24	7479.52	-1420.65	40°25'46.237"N	104°16'51.106"W	0.47	



Actual Wellpath Report

STATE ANTELOPE E-12-1XRLNC AWP

Page 7 of 9



REFERENCE WELLPATH IDENTIFICATION			
Operator	BONANZA CREEK OIL COMPANY	Slot	SLOT#02 STATE ANTELOPE E-12-1XRLNC (330'FSL & 1389'FWL,SEC.12)
Area	COLORADO	Well	STATE ANTELOPE E-12-1XRLNC
Field	WELD COUNTY	Wellbore	STATE ANTELOPE E-12-1XRLNC AWB
Facility	SEC.12-T5N-R62W		

WELLPATH DATA (176 stations)										
MD [ft]	Inclination [°]	Azimuth [°]	TVD [ft]	Vert Sect [ft]	North [ft]	East [ft]	Latitude	Longitude	DLS [°/100ft]	Comments
13725.00	89.450	358.940	6178.58	7698.48	7572.50	-1422.31	40°25'47.156"N	104°16'51.128"W	2.22	
13819.00	87.620	358.030	6180.99	7791.79	7666.43	-1424.79	40°25'48.084"N	104°16'51.160"W	2.17	
13913.00	87.770	358.780	6184.77	7885.07	7760.32	-1427.40	40°25'49.012"N	104°16'51.194"W	0.81	
14006.00	87.690	358.060	6188.45	7977.36	7853.21	-1429.97	40°25'49.930"N	104°16'51.227"W	0.78	
14101.00	87.720	358.930	6192.25	8071.61	7948.10	-1432.46	40°25'50.867"N	104°16'51.259"W	0.92	
14197.00	88.890	0.370	6195.09	8166.65	8044.05	-1433.04	40°25'51.816"N	104°16'51.267"W	1.93	
14292.00	90.530	1.920	6195.58	8260.35	8139.02	-1431.15	40°25'52.754"N	104°16'51.243"W	2.38	
14387.00	88.830	3.400	6196.11	8353.61	8233.91	-1426.74	40°25'53.692"N	104°16'51.186"W	2.37	
14482.00	88.650	3.940	6198.20	8446.53	8328.69	-1420.66	40°25'54.628"N	104°16'51.107"W	0.60	
14577.00	88.770	4.340	6200.33	8539.27	8423.42	-1413.80	40°25'55.564"N	104°16'51.019"W	0.44	
14672.00	88.890	5.920	6202.27	8631.65	8518.02	-1405.31	40°25'56.499"N	104°16'50.909"W	1.67	
14768.00	88.770	4.820	6204.23	8724.92	8613.58	-1396.33	40°25'57.443"N	104°16'50.793"W	1.15	
14863.00	88.980	4.210	6206.10	8817.53	8708.26	-1388.85	40°25'58.379"N	104°16'50.696"W	0.68	
14958.00	90.220	3.430	6206.76	8910.41	8803.05	-1382.52	40°25'59.316"N	104°16'50.614"W	1.54	
15053.00	90.190	3.290	6206.42	9003.45	8897.88	-1376.95	40°26'00.253"N	104°16'50.542"W	0.15	
15148.00	90.550	1.010	6205.81	9096.87	8992.81	-1373.39	40°26'01.191"N	104°16'50.496"W	2.43	
15243.00	89.750	358.900	6205.56	9190.88	9087.80	-1373.46	40°26'02.130"N	104°16'50.497"W	2.38	
15338.00	90.400	357.980	6205.44	9285.22	9182.76	-1376.05	40°26'03.068"N	104°16'50.531"W	1.19	
15434.00	90.650	358.040	6204.56	9380.64	9278.70	-1379.38	40°26'04.016"N	104°16'50.574"W	0.27	
15529.00	89.880	355.780	6204.12	9475.24	9373.56	-1384.50	40°26'04.953"N	104°16'50.640"W	2.51	
15624.00	89.940	355.000	6204.27	9570.04	9468.25	-1392.14	40°26'05.889"N	104°16'50.739"W	0.82	
15719.00	89.940	354.240	6204.37	9664.92	9562.83	-1401.05	40°26'06.824"N	104°16'50.854"W	0.80	
15814.00	90.090	353.840	6204.34	9759.84	9657.32	-1410.91	40°26'07.757"N	104°16'50.982"W	0.45	
15909.00	89.100	352.460	6205.01	9854.80	9751.63	-1422.24	40°26'08.689"N	104°16'51.129"W	1.79	
15931.00	88.640	351.780	6205.45	9876.79	9773.42	-1425.26	40°26'08.905"N	104°16'51.168"W	3.73	Last BHI Survey
15989.00	88.640	351.780	6206.82	9934.78	9830.81	-1433.55	40°26'09.472"N	104°16'51.275"W	0.00	Projection to Bit



Actual Wellpath Report

STATE ANTELOPE E-12-1XRLNC AWP

Page 8 of 9



REFERENCE WELLPATH IDENTIFICATION			
Operator	BONANZA CREEK OIL COMPANY	Slot	SLOT#02 STATE ANTELOPE E-12-1XRLNC (330'FSL & 1389'FWL,SEC.12)
Area	COLORADO	Well	STATE ANTELOPE E-12-1XRLNC
Field	WELD COUNTY	Wellbore	STATE ANTELOPE E-12-1XRLNC AWB
Facility	SEC.12-T5N-R62W		

HOLE & CASING SECTIONS -									
Ref Wellbore: STATE ANTELOPE E-12-1XRLNC AWB				Ref Wellpath: STATE ANTELOPE E-12-1XRLNC AWP					
String/Diameter	Start MD [ft]	End MD [ft]	Interval [ft]	Start TVD [ft]	End TVD [ft]	Start N/S [ft]	Start E/W [ft]	End N/S [ft]	End E/W [ft]
9.625in Casing Surface	17.00	472.00	455.00	17.00	472.00	0.00	0.00	-0.37	1.51
8.75in Open Hole	472.00	6875.00	6403.00	472.00	6183.59	-0.37	1.51	725.70	-1383.65
7in Casing Intermediate	17.00	6875.00	6858.00	17.00	6183.59	0.00	0.00	725.70	-1383.65
6.125in Open Hole	6875.00	15989.00	9114.00	6183.59	6206.82	725.70	-1383.65	9830.81	-1433.55

WELLPATH COMPOSITION -				
Ref Wellbore: STATE ANTELOPE E-12-1XRLNC AWB			Ref Wellpath: STATE ANTELOPE E-12-1XRLNC AWP	
Start MD [ft]	End MD [ft]	Positional Uncertainty Model	Log Name/Comment	Wellbore
17.00	6833.00	NaviTrak (Standard)	BHI/Navitrak MWD 8.75" <529'-6833'>	STATE ANTELOPE E-12-1XRLNC AWB
6833.00	15931.00	NaviTrak (Standard)	BHI/Navitrak MWD 6.125" Hole <6877'-11943'>	STATE ANTELOPE E-12-1XRLNC AWB
15931.00	15989.00	Blind Drilling (std)	Projection to bit	STATE ANTELOPE E-12-1XRLNC AWB



Actual Wellpath Report
STATE ANTELOPE E-12-1XRLNC AWP
Page 9 of 9



REFERENCE WELLPATH IDENTIFICATION			
Operator	BONANZA CREEK OIL COMPANY	Slot	SLOT#02 STATE ANTELOPE E-12-1XRLNC (330'FSL & 1389'FWL,SEC.12)
Area	COLORADO	Well	STATE ANTELOPE E-12-1XRLNC
Field	WELD COUNTY	Wellbore	STATE ANTELOPE E-12-1XRLNC AWB
Facility	SEC.12-T5N-R62W		

WELLPATH COMMENTS				
MD [ft]	Inclination [°]	Azimuth [°]	TVD [ft]	Comment
17.00	0.000	103.950	17.00	Tie on Point
529.00	0.440	103.950	528.99	First BHI Survey
15931.00	88.640	351.780	6205.45	Last BHI Survey
15989.00	88.640	351.780	6206.82	Projection to Bit