

<p>incurred or sustained by anyone resulting from any interpretation made by any of our vendors, agents or employees. These interpretations are also subject to our general terms and conditions set out in our current Price Schedule.</p>	
<p>Comments</p>	

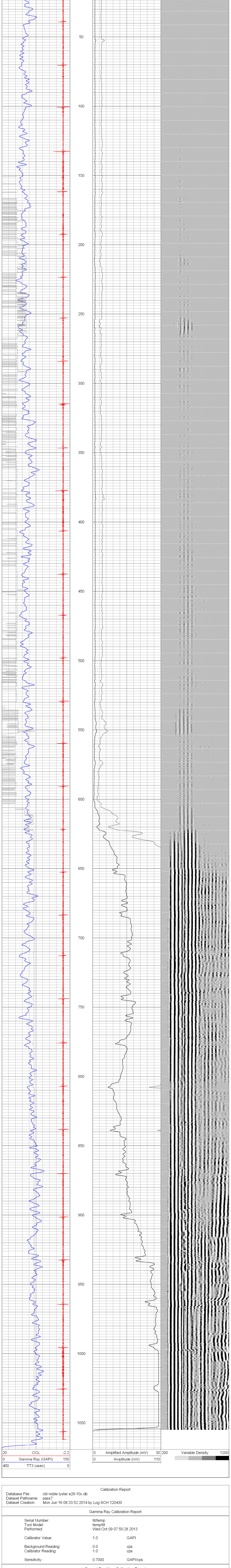
400	TT3 (usec)					0

The graph shows a coordinate plane with a grid. A blue curve starts at the top left, oscillates vertically between $y=1$ and $y=3$, and moves to the right. A red vertical line is drawn at $x=1$, with red dots marking the points where the blue curve intersects it.

[illegible]

A blank grid for drawing a diagram, consisting of a 10x10 square grid with a horizontal line across the middle and a vertical line down the middle, creating four quadrants.

[illegible][illegible]

[illegible][illegible]

Serial Number:
Tool Model:
Performed:

Depth:
Casing Diameter:

Signal Zero:
Calibrated Amplitude:
Reading at Signal Zero:

Serial Number:	
Tool Model:	
Performed:	

Depth:
Casing Diameter:

Serial Number:	
Tool Model:	
Performed:	

Depth:
Casing Diameter:

Signal Zero:
Calibrated Amplitude:
Reading at Signal Zero:
Reading in Free Pipe:

Gain:
Offset:

TEKCO-01
TEKCO-1x2
Mon Jun 16 07:46:43 2014

1154.64	ft
2.875	in
3' Spacing	5' Spac

1.5	0
106.451	106.451
-0.0060791	-0.0059
2.49795	2.43479

41.9129	43.6141
1.75479	0.25981

ing

5703	mV
	mV
	V
	V

1