

WPX ENERGY ROCKY MOUNTAIN LLC-EBUS

PA 424-16

**Nabors 573**

## **Post Job Summary**

# **Cement Surface Casing**

Date Prepared: 07/14/2014  
Job Date: 03/28/2014

Submitted by: Aaron Katz – Grand Junction Cement Engineer

## The Road to Excellence Starts with Safety

Sold To #: 300721	Ship To #: 3123602	Quote #:	Sales Order #: 0901224679
Customer: WPX ENERGY ROCKY MOUNTAIN LLC-EBUS	Customer Rep: HARRY SAMPSON		
Well Name: FEDERAL	Well #: PA 424-16	API/UWI #: 05-045-22036-00	
Field: PARACHUTE	City (SAP): PAR	County/Parish: GARFIELD	State: COLORADO
Legal Description: SE NW-21-6S-95W-2600FNL-1403FWL			
Contractor: NABORS DRLG	Rig/Platform Name/Num: NABORS 573		
Job BOM: 7521			
Well Type: DIRECTIONAL GAS			
Sales Person: HALAMERICA\H105431	Srvc Supervisor: Eric Carter		
Job			

Formation Name				
Formation Depth (MD)	Top	0 FT.	Bottom	1296 FT.
Form Type			BHST	
Job depth MD	1276ft		Job Depth TVD	1276 FT.
Water Depth			Wk Ht Above Floor	5 FT.
Perforation Depth (MD)	From		To	

Well Data										
Description	New / Used	Size in	ID in	Weight lbm/ft	Thread	Grade	Top MD ft	Bottom MD ft	Top TVD ft	Bottom TVD ft
Casing		9.625	9.001	32.3	8 RD	H-40	0	1276	0	1276
Open Hole Section			13.5				0	1296		0

Tools and Accessories									
Type	Size in	Qty	Make	Depth ft		Type	Size in	Qty	Make
Guide Shoe						Top Plug	9.625	1	HES
Float Shoe						Bottom Plug			
Float Collar						SSR plug set			
Insert Float						Plug Container	9.625	1	HES
Stage Tool						Centralizers		12	

Miscellaneous Materials											
Gelling Agt		Conc		Surfactant		Conc		Acid Type		Qty	Conc
Treatment Fld		Conc		Inhibitor		Conc		Sand Type		Size	Qty

Fluid Data										
Stage/Plug #: 1										
Fluid #	Stage Type	Fluid Name	Qty	Qty UoM	Mixing Density lbm/gal	Yield ft3/sack	Mix Fluid Gal	Rate bbl/min	Total Mix Fluid Gal	
1	Fresh Water	Fresh Water	20	bbl	8.33			4		
Fluid #	Stage Type	Fluid Name	Qty	Qty UoM	Mixing Density lbm/gal	Yield ft3/sack	Mix Fluid Gal	Rate bbl/min	Total Mix Fluid Gal	
2	Lead Cement	VARICEM (TM) CEMENT	160	Sack/Ton	12.3	2.38		6	13.77	
13.77 Gal			FRESH WATER							

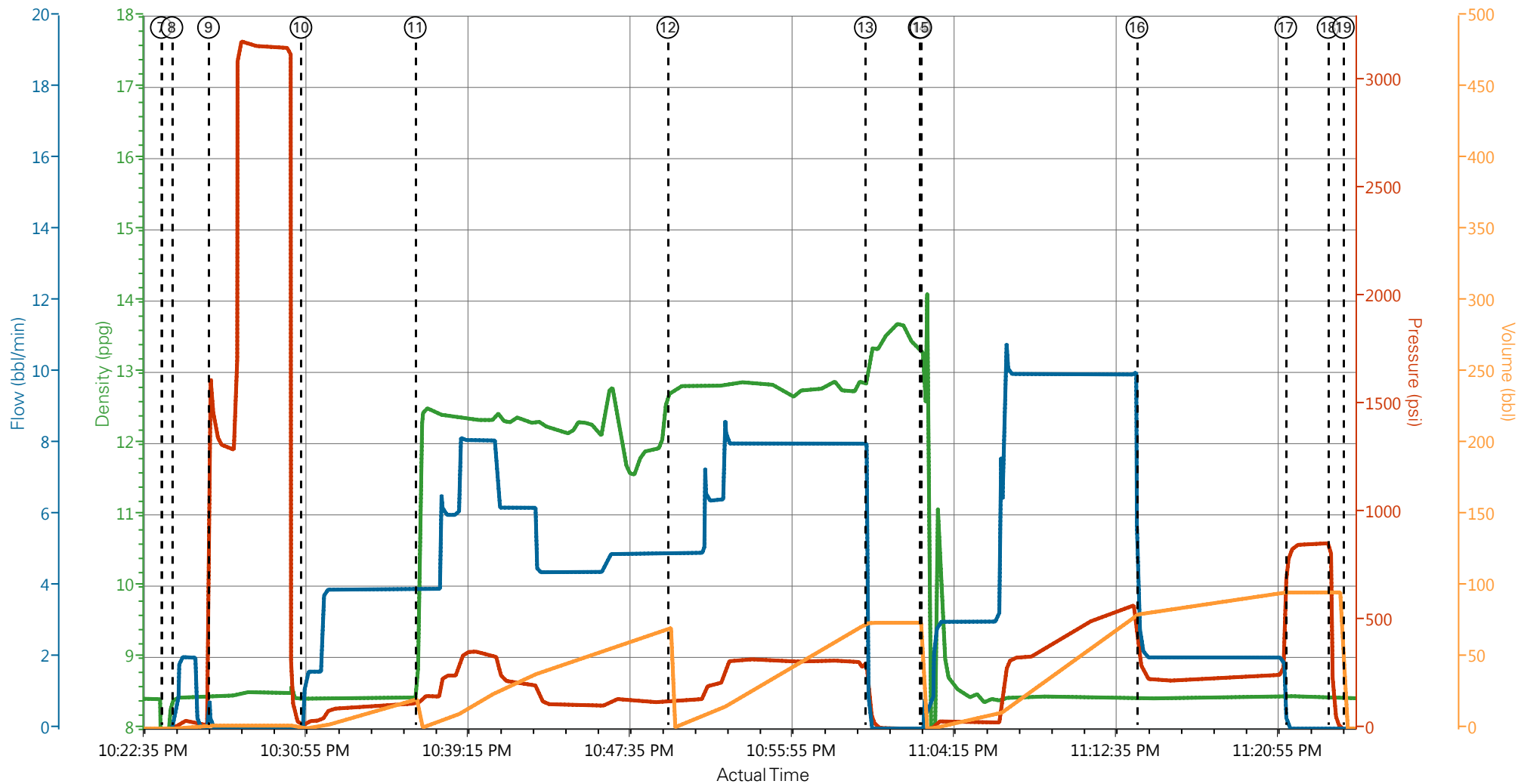
Fluid #	Stage Type	Fluid Name	Qty	Qty UoM	Mixing Density lbm/gal	Yield ft3/sack	Mix Fluid Gal	Rate bbl/min	Total Mix Fluid Gal
3	Tail Cement	VARICEM (TM) CEMENT	175	Sack/Ton	12.8	2.11		8	11.77
11.77 Gal		FRESH WATER							
Fluid #	Stage Type	Fluid Name	Qty	Qty UoM	Mixing Density lbm/gal	Yield ft3/sack	Mix Fluid Gal	Rate bbl/min	Total Mix Fluid Gal
4	Displacement	Displacement	97.4	bbl	8.33			10	
Cement Left In Pipe		Amount	44 ft		Reason		Shoe Joint		
Comment									

## 3.1 Job Event Log

Type	Seq No.	Graph Label	Date	Time	Source	DH Density (ppg)	PS Pump Press (psi)	Comb Pump Rate (bbl/min)	Pump Stg Tot (bbl)	Comment
Event	1	Arrive at Location from Other Job or Site	3/28/2014	17:00	USER					RIG PULLING DRILL PIPE
Event	2	Assessment Of Location Safety Meeting	3/28/2014	20:30	USER					ATTENDED BY ALL HES CREW
Event	3	Other	3/28/2014	20:40	USER					SPOT EQUIPMENT
Event	4	Pre-Rig Up Safety Meeting	3/28/2014	20:50	USER					ATTENDED BY ALL HES CREW
Event	5	Rig-Up Equipment	3/28/2014	21:00	USER					
Event	6	Pre-Job Safety Meeting	3/28/2014	22:00	USER					ATTENDED BY ALL HES CREW, RIG CREW AND COMPANY REP
Event	7	Start Job	3/28/2014	22:23:40	COM5					TP 1276', TD 1296', SJ 44', MW 10.1 PPG, CASING 9.625", 32.3#, H-40, 12 CENTRALIZERS, HOLE 13.5", RIG CIRCULATED FOR 1.5 HR'S PRIOR TO JOB
Event	8	Other	3/28/2014	22:24:13	USER	8.33	25	2	2	FILL LINES
Event	9	Test Lines	3/28/2014	22:26:06	COM5					PRESSURED UP TO 3200 PSI, PRESSURE HELD
Event	10	Pump Spacer 1	3/28/2014	22:30:51	COM5	8.33	100	4	20	FRESH WATER
Event	11	Pump Lead Cement	3/28/2014	22:36:44	COM5	12.3	350	6	67.8	160 SKS VARICEM MIXED AT 12.3 PPG, 2.38 YIELD, 13.75 GL/SK
Event	12	Pump Tail Cement	3/28/2014	22:49:43	COM5	12.8	300	8	65.8	175 SKS VARICEM MIXED AT 12.8 PPG, 2.11 YIELD, 11.75 GL/SK
Event	13	Shutdown	3/28/2014	22:59:52	USER					
Event	14	Drop Top Plug	3/28/2014	23:02:39	COM5					PLUG LALUNCHED
Event	15	Pump Displacement	3/28/2014	23:02:43	COM5	8.33	580	10	82.4	FRESH WATER
Event	16	Slow Rate	3/28/2014	23:13:50	USER	8.33	250	12	15	
Event	17	Bump Plug	3/28/2014	23:21:30	COM5		860			PLUG LANDED
Event	18	Check Floats	3/28/2014	23:23:40	USER					FLOATS HELD

Event	19	End Job	3/28/2014	23:24:27	COM5	GOOD CIRCULATION THROUGH OUT JOB, PIPE NOT MOVED DURING JOB, 25 BBLS CEMENT TO SURFACE
Event	20	Post-Job Safety Meeting (Pre Rig-Down)	3/28/2014	23:25	USER	ATTENDED BY ALL HES CREW
Event	21	Rig-Down Equipment	3/28/2014	23:30	USER	
Event	22	Depart Location Safety Meeting	3/28/2014	11:50	USER	ATTENDED BY ALL HES CREW
Event	23	Crew Leave Location	3/28/2014	11:55	USER	THANK YOU FOR USING HALLIBURTON CEMENT, ERIC CARTER AND CREW.

# WPX - PA 424-16 - SURFACE



- |   |                                     |  |                                    |                       |
|---|-------------------------------------|--|------------------------------------|-----------------------|
| ① Arrive at Location from Other Job or Site 8.42;194;5.7;13.2 | ⑤ Rig-Up Equipment 8.42;99;0;13.6   | ⑨ Test Lines 8.46;1505;0;2.1           | ⑬ Shutdown 13.02;137;0;74.3        | ⑰ Bump Plug 8.46;80   |
| ② Assessment Of Location Safety Meeting 8.42;119;0;13.6       | ⑥ Pre-Job Safety Meeting 8.43;0;0;0 | ⑩ Pump Spacer 1 8.42;15;1.1;0          | ⑭ Drop Top Plug 13.27;-4;0;74.3    | ⑱ Check Floats 8.44;5 |
| ③ Other 8.42;101;0;13.6                                       | ⑦ Start Job 6.72;-1;0;0             | ⑪ Pump Lead Cement 9.69;119;3.9;0.1    | ⑮ Pump Displacement 13.25;-3;0.8;0 | ⑲ End Job 8.42;-9;0;0 |
| ④ Pre-Rig Up Safety Meeting 8.42;94;0;13.6                    | ⑧ Other 8.43;1;0.8;0.1              | ⑫ Pump Tail Cement 12.69;132.38;4.9;44 | ⑯ Slow Rate 8.44;302;2.7;80.7      | 20 Post-Job Safety M  |

HALLIBURTON | iCem® Service

Created: 2014-03-28 21:55:17, Version: 3.0.121

Edit

Customer: WPX ENERGY ROCKY MOUNTAIN LLC-EBUS

Job Date: 3/28/2014 9:56:59 PM

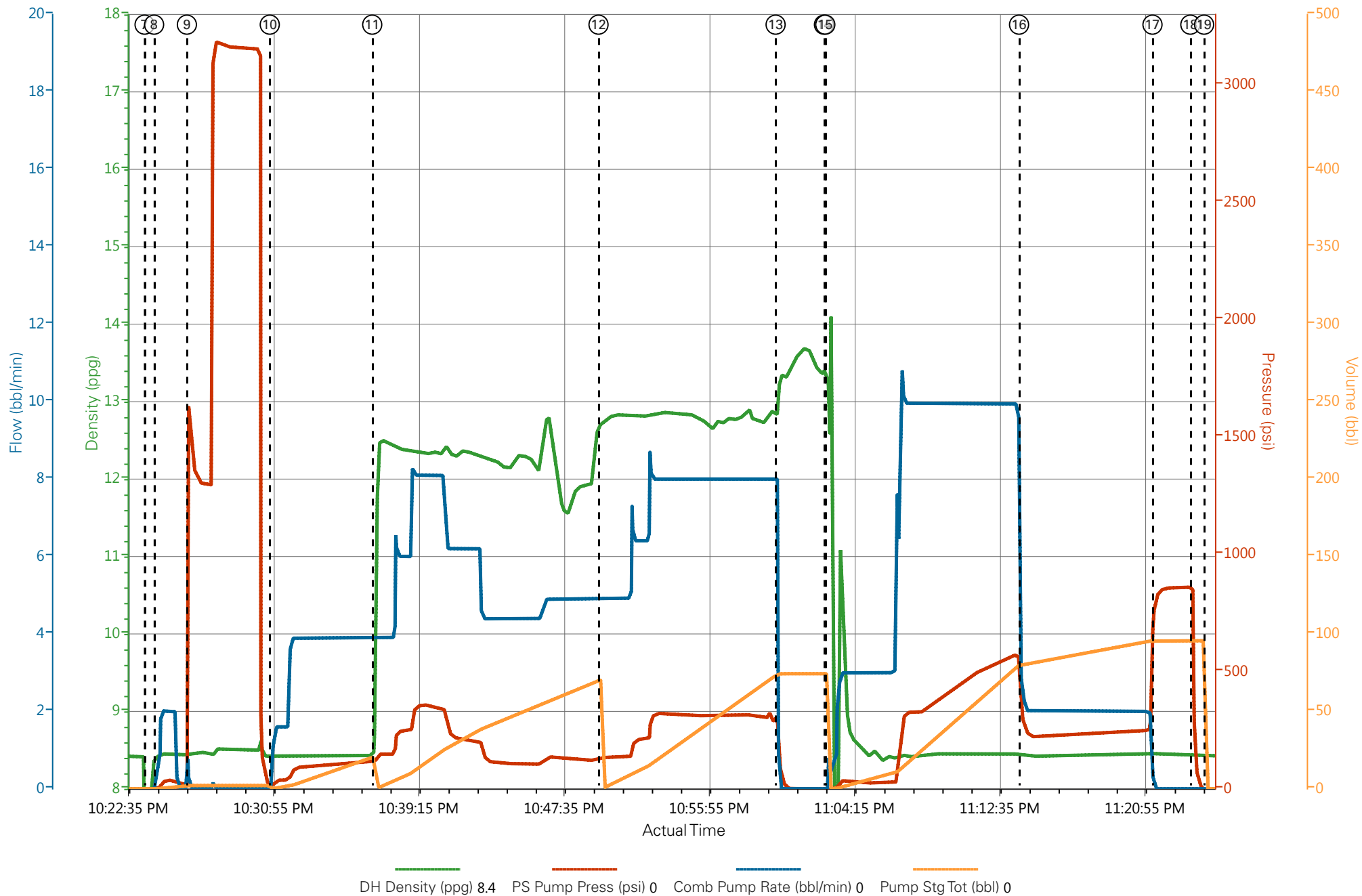
Well: PA 424-16

Representative: HARRY SAMPSON

Sales Order #: 901224679

ERIC CARTER: DAVID CAMPBELL/ELITE 7

# WPX - PA 424-16 - SURFACE



# HALLIBURTON

## Water Analysis Report

Company: WPX

Submitted by: ERIC CARTER

Attention: J.Trout

Lease: NABORS 573

Well #: PA 424-16

Date: 7/14/2014

Date Rec.: 7/14/2014

S.O.#: 901224679

Job Type: PRODUCTION

Specific Gravity	<i>MAX</i>	<i>1</i>
pH	<i>8</i>	<i>7</i>
Potassium (K)	<i>5000</i>	<i>400</i> Mg / L
Hardness	<i>500</i>	<i>250</i> Mg / L
Iron (FE2)	<i>300</i>	<i>0</i> Mg / L
Chlorides (Cl)	<i>3000</i>	<i>500</i> Mg / L
Sulfates (SO <sub>4</sub> )	<i>1500</i>	<i>&lt;200</i> Mg / L
Temp	<i>40-80</i>	<i>60</i> Deg
Total Dissolved Solids		<i>700</i> Mg / L

Respectfully: ERIC CARTER

Title: CEMENTING SUPERVISOR

Location: Grand Junction, CO

NOTICE: This report is limited to the described sample tested. Any person using or relying on this report agrees that Halliburton shall not be liable for any loss or damage whether due to act or omission resulting from such report or it