

# BONANZA CREEK OIL COMPANY

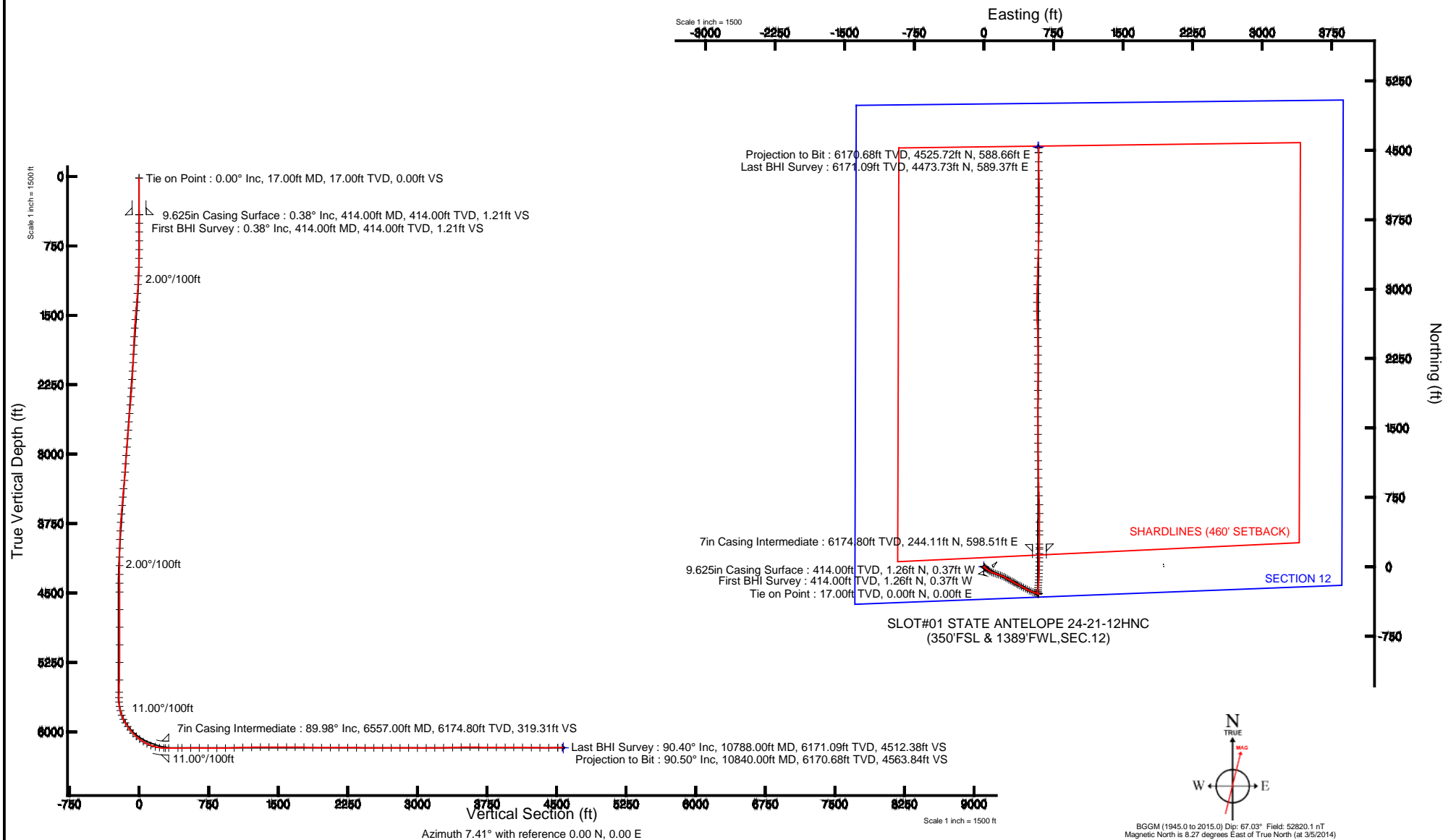
Location: COLORADO Slot: SLOT#01 STATE ANTELOPE 24-21-12HNC (350'FSL & 1389'FWL,SEC.12)  
Field: WELD COUNTY Well: STATE ANTELOPE 24-21-12HNC  
Facility: SEC.12-T5N-R62W Wellbore: STATE ANTELOPE 24-21-12HNC PWB

Plot reference wellpath is STATE ANTELOPE 24-21-12HNC (REV-B.0) PWP

True vertical depths are referenced to CADE 22 (RKB)	Grid System: NAD83 / Lambert Colorado SP, Northern Zone (501), US feet
Measured depths are referenced to CADE 22 (RKB)	North Reference: True north
CADE 22 (RKB) to Mean Sea Level: 4592 feet	Scale: True distance
Mean Sea Level to Mud line (At Slot: SLOT#01 STATE ANTELOPE 24-21-12HNC (350'FSL & 1389'FWL,SEC.12)): 0 feet	Depths are in feet
Coordinates are in feet referenced to Slot	Created by: guenaler on 7/18/2014

## Location Information

Facility Name				Grid East (US Ft)	Grid North (US Ft)	Latitude	Longitude
SEC.12-T5N-R62W				3340907.222	1394208.948	40°24'32.544"N	104°18'32.738"W
Site		Local N (ft)	Local E (ft)	Grid East (US Ft)	Grid North (US Ft)	Latitude	Longitude
SLOT#01 STATE ANTELOPE 24-21-12HNC (350'FSL & 1389'FWL,SEC.12)		0.00	0.00	3340907.222	1394208.948	40°24'32.544"N	104°18'32.738"W
CADE 22 (RKB) to Mud line (At Slot: SLOT#01 STATE ANTELOPE 24-21-12HNC (350'FSL & 1389'FWL,SEC.12))						4592ft	
Mean Sea Level to Mud line (At Slot: SLOT#01 STATE ANTELOPE 24-21-12HNC (350'FSL & 1389'FWL,SEC.12))						0ft	
CADE 22 (RKB) to Mean Sea Level						4592ft	





# Actual Wellpath Report

## STATE ANTELOPE 24-21-12HNC AWP

Page 1 of 7



### REFERENCE WELLPATH IDENTIFICATION

Operator	BONANZA CREEK OIL COMPANY	Slot	SLOT#01 STATE ANTELOPE 24-21-12HNC (350'FSL & 1389'FWL,SEC.12)
Area	COLORADO	Well	STATE ANTELOPE 24-21-12HNC
Field	WELD COUNTY	Wellbore	STATE ANTELOPE 24-21-12HNC AWB
Facility	SEC.12-T5N-R62W		

### REPORT SETUP INFORMATION

Projection System	NAD83 / Lambert Colorado SP, Northern Zone (501), US feet	Software System	WellArchitect® 4.0.0
North Reference	True	User	Guenaler
Scale	0.999961	Report Generated	7/18/2014 at 10:01:19 AM
Convergence at slot	n/a	Database/Source file	WA_Denver/STATE_ANTELOPE_24-21-12HNC_AWB.xml

### WELLPATH LOCATION

	Local coordinates		Grid coordinates		Geographic coordinates	
	North[ft]	East[ft]	Easting[US ft]	Northing[US ft]	Latitude	Longitude
Slot Location	0.00	0.00	3340907.22	1394206.95	40°24'32.544"N	104°16'32.736"W
Facility Reference Pt			3340907.22	1394206.95	40°24'32.544"N	104°16'32.736"W
Field Reference Pt			3327718.19	1377782.99	40°21'52.020"N	104°19'26.040"W

### WELLPATH DATUM

Calculation method	Minimum curvature	CADE 22 (RKB) to Facility Vertical Datum	4592.00ft
Horizontal Reference Pt	Slot	CADE 22 (RKB) to Mean Sea Level	4592.00ft
Vertical Reference Pt	CADE 22 (RKB)	CADE 22 (RKB) to Mud Line at Slot (SLOT#01 STATE ANTELOPE 24-21-12HNC (350'FSL & 1389'FWL,SEC.12))	4592.00ft
MD Reference Pt	CADE 22 (RKB)	Section Origin	N 0.00, E 0.00 ft
Field Vertical Reference	Mean Sea Level	Section Azimuth	7.41°



# Actual Wellpath Report

## STATE ANTELOPE 24-21-12HNC AWP

Page 2 of 7



### REFERENCE WELLPATH IDENTIFICATION

Operator	BONANZA CREEK OIL COMPANY	Slot	SLOT#01 STATE ANTELOPE 24-21-12HNC (350'FSL & 1389'FWL,SEC.12)
Area	COLORADO	Well	STATE ANTELOPE 24-21-12HNC
Field	WELD COUNTY	Wellbore	STATE ANTELOPE 24-21-12HNC AWB
Facility	SEC.12-T5N-R62W		

### WELLPATH DATA (118 stations) † = interpolated/extrapolated station

MD [ft]	Inclination [°]	Azimuth [°]	TVD [ft]	Vert Sect [ft]	North [ft]	East [ft]	Latitude	Longitude	DLS [°/100ft]	Comments
0.00†	0.000	343.720	0.00	0.00	0.00	0.00	40°24'32.544"N	104°16'32.736"W	0.00	
17.00	0.000	343.720	17.00	0.00	0.00	0.00	40°24'32.544"N	104°16'32.736"W	0.00	Tie on Point
414.00	0.380	343.720	414.00	1.21	1.26	-0.37	40°24'32.556"N	104°16'32.741"W	0.10	First BHI Survey
505.00	0.480	329.850	504.99	1.78	1.88	-0.65	40°24'32.563"N	104°16'32.744"W	0.16	
600.00	0.440	320.820	599.99	2.35	2.51	-1.08	40°24'32.569"N	104°16'32.750"W	0.09	
695.00	0.440	307.150	694.99	2.78	3.01	-1.60	40°24'32.574"N	104°16'32.757"W	0.11	
790.00	0.750	133.850	789.99	2.59	2.80	-1.44	40°24'32.572"N	104°16'32.755"W	1.25	
885.00	2.700	146.570	884.94	0.53	0.50	0.24	40°24'32.549"N	104°16'32.733"W	2.08	
980.00	3.710	136.590	979.79	-3.10	-3.60	3.59	40°24'32.508"N	104°16'32.690"W	1.21	
1074.00	5.080	129.210	1073.51	-7.22	-8.44	8.90	40°24'32.461"N	104°16'32.621"W	1.57	
1169.00	6.670	119.370	1168.01	-11.50	-13.80	16.97	40°24'32.408"N	104°16'32.517"W	1.98	
1265.00	7.690	131.730	1263.26	-17.20	-20.81	26.62	40°24'32.338"N	104°16'32.392"W	1.92	
1361.00	9.740	128.590	1358.15	-25.03	-30.15	37.76	40°24'32.246"N	104°16'32.248"W	2.19	
1456.00	11.120	123.160	1451.58	-33.17	-40.18	51.72	40°24'32.147"N	104°16'32.067"W	1.78	
1552.00	11.190	119.140	1545.77	-40.64	-49.78	67.60	40°24'32.052"N	104°16'31.862"W	0.81	
1647.00	12.420	114.110	1638.76	-46.98	-58.44	84.98	40°24'31.967"N	104°16'31.637"W	1.69	
1741.00	11.720	113.130	1730.68	-52.47	-66.32	102.99	40°24'31.889"N	104°16'31.405"W	0.78	
1835.00	11.740	107.740	1822.72	-56.77	-72.98	120.87	40°24'31.823"N	104°16'31.173"W	1.17	
1935.00	12.350	107.170	1920.52	-60.41	-79.24	140.78	40°24'31.761"N	104°16'30.916"W	0.62	
2028.00	12.410	110.060	2011.36	-64.28	-85.60	159.67	40°24'31.698"N	104°16'30.672"W	0.67	
2123.00	12.650	109.890	2104.10	-68.76	-92.64	179.04	40°24'31.629"N	104°16'30.422"W	0.26	
2216.00	12.310	114.610	2194.90	-73.89	-100.24	197.63	40°24'31.553"N	104°16'30.181"W	1.16	
2310.00	12.770	116.480	2286.66	-80.25	-109.04	216.04	40°24'31.466"N	104°16'29.943"W	0.65	
2404.00	12.300	117.670	2378.42	-87.11	-118.33	234.21	40°24'31.375"N	104°16'29.708"W	0.57	
2497.00	12.900	121.500	2469.18	-94.78	-128.35	251.83	40°24'31.276"N	104°16'29.481"W	1.11	
2591.00	12.360	120.520	2560.90	-103.01	-138.94	269.45	40°24'31.171"N	104°16'29.253"W	0.62	
2684.00	11.580	116.120	2651.88	-109.91	-148.11	286.40	40°24'31.080"N	104°16'29.034"W	1.29	
2777.00	12.760	117.910	2742.79	-116.50	-157.02	303.86	40°24'30.992"N	104°16'28.808"W	1.33	
2870.00	11.810	117.530	2833.66	-123.37	-166.23	321.37	40°24'30.901"N	104°16'28.582"W	1.03	
2962.00	11.330	123.710	2923.80	-130.61	-175.60	337.24	40°24'30.809"N	104°16'28.376"W	1.44	



# Actual Wellpath Report

## STATE ANTELOPE 24-21-12HNC AWP

Page 3 of 7



### REFERENCE WELLPATH IDENTIFICATION

Operator	BONANZA CREEK OIL COMPANY	Slot	SLOT#01 STATE ANTELOPE 24-21-12HNC (350'FSL & 1389'FWL,SEC.12)
Area	COLORADO	Well	STATE ANTELOPE 24-21-12HNC
Field	WELD COUNTY	Wellbore	STATE ANTELOPE 24-21-12HNC AWB
Facility	SEC.12-T5N-R62W		

### WELLPATH DATA (118 stations)

MD [ft]	Inclination [°]	Azimuth [°]	TVD [ft]	Vert Sect [ft]	North [ft]	East [ft]	Latitude	Longitude	DLS [°/100ft]	Comments
3054.00	12.340	120.760	3013.84	-138.51	-185.64	353.21	40°24'30.710"N	104°16'28.170"W	1.28	
3146.00	11.970	114.730	3103.78	-145.24	-194.66	370.32	40°24'30.620"N	104°16'27.949"W	1.44	
3239.00	12.670	114.810	3194.64	-151.16	-202.97	388.34	40°24'30.538"N	104°16'27.716"W	0.75	
3332.00	14.040	118.840	3285.12	-158.33	-212.70	407.48	40°24'30.442"N	104°16'27.469"W	1.78	
3424.00	14.500	120.070	3374.28	-166.84	-223.85	427.22	40°24'30.332"N	104°16'27.213"W	0.60	
3518.00	14.530	116.960	3465.29	-175.32	-235.09	447.92	40°24'30.221"N	104°16'26.946"W	0.83	
3611.00	14.780	117.170	3555.26	-183.23	-245.80	468.87	40°24'30.115"N	104°16'26.675"W	0.27	
3705.00	14.160	116.670	3646.28	-191.08	-256.43	489.81	40°24'30.010"N	104°16'26.404"W	0.67	
3798.00	13.000	114.340	3736.68	-197.88	-265.85	509.51	40°24'29.917"N	104°16'26.150"W	1.38	
3893.00	12.800	109.870	3829.28	-203.26	-273.83	529.14	40°24'29.838"N	104°16'25.896"W	1.07	
3988.00	10.440	105.090	3922.33	-206.68	-279.65	547.35	40°24'29.781"N	104°16'25.660"W	2.68	
4084.00	8.150	102.040	4017.06	-208.39	-283.34	562.41	40°24'29.744"N	104°16'25.466"W	2.44	
4179.00	6.060	102.490	4111.33	-209.37	-285.83	573.89	40°24'29.720"N	104°16'25.317"W	2.20	
4274.00	4.010	112.820	4205.96	-210.70	-288.20	581.85	40°24'29.696"N	104°16'25.214"W	2.35	
4368.00	2.250	96.470	4299.82	-211.54	-289.68	586.71	40°24'29.681"N	104°16'25.152"W	2.08	
4463.00	0.830	72.900	4394.78	-211.23	-289.69	589.22	40°24'29.681"N	104°16'25.119"W	1.61	
4558.00	0.430	89.970	4489.77	-210.89	-289.49	590.24	40°24'29.683"N	104°16'25.106"W	0.46	
4748.00	0.280	43.450	4679.77	-210.43	-289.15	591.27	40°24'29.687"N	104°16'25.093"W	0.16	
4938.00	0.230	300.860	4869.77	-209.90	-288.62	591.26	40°24'29.692"N	104°16'25.093"W	0.21	
5128.00	0.300	227.100	5059.77	-210.13	-288.76	590.57	40°24'29.691"N	104°16'25.102"W	0.17	
5319.00	0.610	241.360	5250.76	-211.11	-289.59	589.31	40°24'29.682"N	104°16'25.118"W	0.17	
5508.00	1.130	214.160	5439.74	-213.37	-291.61	587.38	40°24'29.662"N	104°16'25.143"W	0.34	
5640.00	1.260	219.290	5571.71	-215.76	-293.81	585.73	40°24'29.641"N	104°16'25.164"W	0.13	
5698.00	0.340	187.370	5629.71	-216.48	-294.48	585.30	40°24'29.634"N	104°16'25.170"W	1.70	
5746.00	4.460	336.830	5677.66	-215.01	-292.90	584.55	40°24'29.650"N	104°16'25.180"W	9.91	
5793.00	8.200	346.690	5724.37	-210.30	-287.96	583.06	40°24'29.698"N	104°16'25.199"W	8.26	
5841.00	13.920	359.120	5771.46	-201.38	-278.84	582.18	40°24'29.789"N	104°16'25.210"W	12.84	
5893.00	18.780	1.600	5821.35	-186.85	-264.21	582.32	40°24'29.933"N	104°16'25.208"W	9.44	
5940.00	25.980	4.290	5864.78	-169.03	-246.36	583.30	40°24'30.109"N	104°16'25.196"W	15.47	
5983.00	30.660	3.870	5902.62	-148.67	-226.02	584.75	40°24'30.310"N	104°16'25.177"W	10.89	



# Actual Wellpath Report

## STATE ANTELOPE 24-21-12HNC AWP

Page 4 of 7



### REFERENCE WELLPATH IDENTIFICATION

Operator	BONANZA CREEK OIL COMPANY	Slot	SLOT#01 STATE ANTELOPE 24-21-12HNC (350'FSL & 1389'FWL,SEC.12)
Area	COLORADO	Well	STATE ANTELOPE 24-21-12HNC
Field	WELD COUNTY	Wellbore	STATE ANTELOPE 24-21-12HNC AWB
Facility	SEC.12-T5N-R62W		

### WELLPATH DATA (118 stations)

MD [ft]	Inclination [°]	Azimuth [°]	TVD [ft]	Vert Sect [ft]	North [ft]	East [ft]	Latitude	Longitude	DLS [°/100ft]	Comments
6031.00	34.460	6.240	5943.07	-122.86	-200.30	587.05	40°24'30.565"N	104°16'25.147"W	8.35	
6077.00	37.740	4.630	5980.23	-95.78	-173.32	589.60	40°24'30.831"N	104°16'25.114"W	7.42	
6125.00	43.580	3.090	6016.63	-64.59	-142.13	591.68	40°24'31.139"N	104°16'25.087"W	12.34	
6172.00	47.570	2.650	6049.52	-31.13	-108.61	593.36	40°24'31.471"N	104°16'25.066"W	8.52	
6218.00	52.900	1.440	6078.94	4.06	-73.29	594.61	40°24'31.820"N	104°16'25.050"W	11.76	
6266.00	58.280	0.950	6106.05	43.41	-33.71	595.43	40°24'32.211"N	104°16'25.039"W	11.24	
6314.00	64.240	1.090	6129.12	85.22	8.35	596.18	40°24'32.626"N	104°16'25.029"W	12.42	
6361.00	69.140	1.770	6147.71	128.13	51.48	597.26	40°24'33.053"N	104°16'25.015"W	10.51	
6409.00	75.750	1.970	6162.18	173.66	97.20	598.75	40°24'33.504"N	104°16'24.996"W	13.78	
6456.00	82.000	0.150	6171.25	219.46	143.28	599.60	40°24'33.960"N	104°16'24.985"W	13.83	
6504.00	89.720	359.510	6174.71	266.88	191.12	599.45	40°24'34.433"N	104°16'24.987"W	16.14	
6521.00	89.910	358.680	6174.77	283.70	208.12	599.18	40°24'34.600"N	104°16'24.990"W	5.01	
6657.00	90.190	0.560	6174.65	418.44	344.11	598.28	40°24'35.944"N	104°16'25.002"W	1.40	
6700.00	90.120	0.180	6174.53	461.12	387.11	598.56	40°24'36.369"N	104°16'24.998"W	0.90	
6795.00	90.280	1.020	6174.20	555.44	482.10	599.55	40°24'37.308"N	104°16'24.985"W	0.90	
6889.00	89.690	359.380	6174.23	648.70	576.10	599.88	40°24'38.237"N	104°16'24.981"W	1.85	
6984.00	88.650	358.020	6175.60	742.59	671.06	597.73	40°24'39.175"N	104°16'25.009"W	1.80	
7080.00	90.000	357.530	6176.73	837.22	766.98	594.00	40°24'40.123"N	104°16'25.057"W	1.50	
7175.00	91.260	358.920	6175.69	930.99	861.92	591.06	40°24'41.061"N	104°16'25.095"W	1.97	
7270.00	92.220	358.670	6172.80	1024.87	956.86	589.06	40°24'41.999"N	104°16'25.121"W	1.04	
7365.00	92.000	359.130	6169.31	1118.76	1051.77	587.24	40°24'42.937"N	104°16'25.144"W	0.54	
7460.00	91.020	359.140	6166.80	1212.74	1146.73	585.81	40°24'43.875"N	104°16'25.163"W	1.03	
7555.00	90.280	359.500	6165.72	1306.79	1241.72	584.68	40°24'44.814"N	104°16'25.177"W	0.87	
7650.00	89.320	359.530	6166.06	1400.88	1336.71	583.87	40°24'45.753"N	104°16'25.188"W	1.01	
7745.00	90.220	359.720	6166.44	1495.00	1431.71	583.25	40°24'46.692"N	104°16'25.196"W	0.97	
7840.00	90.890	359.500	6165.52	1589.12	1526.70	582.61	40°24'47.630"N	104°16'25.204"W	0.74	
7935.00	89.970	359.960	6164.80	1683.26	1621.69	582.16	40°24'48.569"N	104°16'25.210"W	1.08	
8030.00	88.110	0.290	6166.40	1777.48	1716.68	582.37	40°24'49.507"N	104°16'25.207"W	1.99	
8126.00	88.490	0.070	6169.24	1872.67	1812.63	582.67	40°24'50.456"N	104°16'25.203"W	0.46	
8220.00	88.950	359.540	6171.34	1965.82	1906.61	582.35	40°24'51.384"N	104°16'25.207"W	0.75	



# Actual Wellpath Report

## STATE ANTELOPE 24-21-12HNC AWP

Page 5 of 7



### REFERENCE WELLPATH IDENTIFICATION

Operator	BONANZA CREEK OIL COMPANY	Slot	SLOT#01 STATE ANTELOPE 24-21-12HNC (350'FSL & 1389'FWL,SEC.12)
Area	COLORADO	Well	STATE ANTELOPE 24-21-12HNC
Field	WELD COUNTY	Wellbore	STATE ANTELOPE 24-21-12HNC AWB
Facility	SEC.12-T5N-R62W		

### WELLPATH DATA (118 stations)

MD [ft]	Inclination [°]	Azimuth [°]	TVD [ft]	Vert Sect [ft]	North [ft]	East [ft]	Latitude	Longitude	DLS [°/100ft]	Comments
8316.00	91.170	0.760	6171.24	2061.04	2002.60	582.60	40°24'52.333"N	104°16'25.204"W	2.64	
8410.00	90.280	0.010	6170.05	2154.32	2096.59	583.23	40°24'53.262"N	104°16'25.196"W	1.24	
8505.00	89.070	359.600	6170.59	2248.48	2191.59	582.91	40°24'54.200"N	104°16'25.200"W	1.34	
8600.00	89.690	0.300	6171.62	2342.67	2286.58	582.82	40°24'55.139"N	104°16'25.201"W	0.98	
8695.00	89.530	359.320	6172.27	2436.83	2381.57	582.51	40°24'56.078"N	104°16'25.205"W	1.05	
8790.00	90.090	359.580	6172.58	2530.92	2476.57	581.60	40°24'57.016"N	104°16'25.217"W	0.65	
8885.00	89.320	357.660	6173.07	2624.79	2571.54	579.31	40°24'57.955"N	104°16'25.246"W	2.18	
8980.00	89.820	356.930	6173.78	2718.31	2666.43	574.83	40°24'58.893"N	104°16'25.304"W	0.93	
9075.00	90.560	358.550	6173.47	2811.96	2761.35	571.08	40°24'59.831"N	104°16'25.353"W	1.87	
9170.00	89.630	1.320	6173.31	2906.14	2856.34	570.97	40°25'00.769"N	104°16'25.354"W	3.08	
9264.00	89.290	1.540	6174.20	2999.62	2950.30	573.32	40°25'01.698"N	104°16'25.324"W	0.43	
9359.00	90.590	1.810	6174.30	3094.14	3045.26	576.09	40°25'02.636"N	104°16'25.288"W	1.40	
9454.00	90.560	1.150	6173.34	3188.63	3140.22	578.55	40°25'03.574"N	104°16'25.256"W	0.70	
9549.00	91.210	1.310	6171.88	3283.06	3235.19	580.59	40°25'04.513"N	104°16'25.230"W	0.70	
9645.00	91.790	2.570	6169.36	3378.59	3331.10	583.84	40°25'05.461"N	104°16'25.188"W	1.44	
9739.00	91.510	2.250	6166.66	3472.19	3424.98	587.79	40°25'06.388"N	104°16'25.137"W	0.45	
9834.00	89.690	1.430	6165.66	3566.73	3519.92	590.84	40°25'07.326"N	104°16'25.097"W	2.10	
9929.00	89.170	1.590	6166.61	3661.22	3614.88	593.34	40°25'08.265"N	104°16'25.065"W	0.57	
10025.00	89.570	0.470	6167.66	3756.62	3710.86	595.07	40°25'09.213"N	104°16'25.042"W	1.24	
10120.00	89.940	359.970	6168.07	3850.87	3805.86	595.43	40°25'10.152"N	104°16'25.038"W	0.65	
10215.00	90.180	359.840	6167.97	3945.06	3900.85	595.27	40°25'11.091"N	104°16'25.040"W	0.29	
10310.00	90.530	1.250	6167.38	4039.37	3995.85	596.18	40°25'12.029"N	104°16'25.028"W	1.53	
10405.00	88.400	358.780	6168.27	4133.56	4090.83	596.20	40°25'12.968"N	104°16'25.028"W	3.43	
10500.00	89.110	358.920	6170.33	4227.48	4185.79	594.30	40°25'13.906"N	104°16'25.052"W	0.76	
10594.00	89.230	358.660	6171.69	4320.41	4279.76	592.31	40°25'14.835"N	104°16'25.078"W	0.30	
10689.00	90.530	359.460	6171.89	4414.40	4374.74	590.75	40°25'15.773"N	104°16'25.098"W	1.61	
10788.00	90.400	358.940	6171.09	4512.38	4473.73	589.37	40°25'16.752"N	104°16'25.116"W	0.54	Last BHI Survey
10840.00	90.500	359.500	6170.68	4563.84	4525.72	588.66	40°25'17.265"N	104°16'25.125"W	1.09	Projection to Bit



# Actual Wellpath Report

## STATE ANTELOPE 24-21-12HNC AWP

Page 6 of 7



### REFERENCE WELLPATH IDENTIFICATION

Operator	BONANZA CREEK OIL COMPANY	Slot	SLOT#01 STATE ANTELOPE 24-21-12HNC (350'FSL & 1389'FWL,SEC.12)
Area	COLORADO	Well	STATE ANTELOPE 24-21-12HNC
Field	WELD COUNTY	Wellbore	STATE ANTELOPE 24-21-12HNC AWB
Facility	SEC.12-T5N-R62W		

### HOLE & CASING SECTIONS -

Ref Wellbore: STATE ANTELOPE 24-21-12HNC AWB Ref Wellpath: STATE ANTELOPE 24-21-12HNC AWP

String/Diameter	Start MD [ft]	End MD [ft]	Interval [ft]	Start TVD [ft]	End TVD [ft]	Start N/S [ft]	Start E/W [ft]	End N/S [ft]	End E/W [ft]
9.625in Casing Surface	17.00	414.00	397.00	17.00	414.00	0.00	0.00	1.26	-0.37
8.75in Open Hole	414.00	6563.00	6149.00	414.00	6174.80	1.26	-0.37	250.11	598.43
7in Casing Intermediate	17.00	6557.00	6540.00	17.00	6174.80	0.00	0.00	244.11	598.51
6.125in Open Hole	6557.00	10840.00	4283.00	6174.80	6170.68	244.11	598.51	4525.72	588.66

### TARGETS

Name	MD [ft]	TVD [ft]	North [ft]	East [ft]	Grid East [US ft]	Grid North [US ft]	Latitude	Longitude	Shape
STATE ANTELOPE 24-21-12HNC SECTION 12		0.00	0.00	0.00	3340907.22	1394206.95	40°24'32.544"N	104°16'32.736"W	polygon
STATE ANTELOPE 24-21-12HNC BHL REV-1 FROM PLAT (470'FNL & 1969'FWL,SEC.12)		6173.00	4535.71	581.93	3341426.45	1398750.07	40°25'17.364"N	104°16'25.212"W	point
STATE ANTELOPE 24-21-12HNC BHL REV-2 FROM PLAT (470'FNL & 1969'FWL,SEC.12)		6173.00	4535.71	590.28	3341434.81	1398750.18	40°25'17.364"N	104°16'25.104"W	point
STATE ANTELOPE 24-21-12HNC HARDLINES (460' SETBACK)		6173.00	0.00	0.00	3340907.22	1394206.95	40°24'32.544"N	104°16'32.736"W	polygon
Ex.STATE ANTELOPE #11-12 (200' Radius)		7191.00	4379.05	-715.58	3340131.29	1398575.53	40°25'15.816"N	104°16'41.988"W	circle

### WELLPATH COMPOSITION -

Ref Wellbore: STATE ANTELOPE 24-21-12HNC AWB Ref Wellpath: STATE ANTELOPE 24-21-12HNC AWP

Start MD [ft]	End MD [ft]	Positional Uncertainty Model	Log Name/Comment	Wellbore
17.00	6521.00	NaviTrak (Standard)	BHI/Navitrak MWD 8.75" Hole <17'-6521'>	STATE ANTELOPE 24-21-12HNC AWB
6521.00	10788.00	NaviTrak (Standard)	BHI/Navitrak MWD 6.125" Hole <6657'-7460'>	STATE ANTELOPE 24-21-12HNC AWB
10788.00	10840.00	Blind Drilling (std)	Projection to bit	STATE ANTELOPE 24-21-12HNC AWB





Actual Wellpath Report  
STATE ANTELOPE 24-21-12HNC AWP  
Page 7 of 7



REFERENCE WELLPATH IDENTIFICATION			
Operator	BONANZA CREEK OIL COMPANY	Slot	SLOT#01 STATE ANTELOPE 24-21-12HNC (350'FSL & 1389'FWL,SEC.12)
Area	COLORADO	Well	STATE ANTELOPE 24-21-12HNC
Field	WELD COUNTY	Wellbore	STATE ANTELOPE 24-21-12HNC AWB
Facility	SEC.12-T5N-R62W		

WELLPATH COMMENTS				
MD [ft]	Inclination [°]	Azimuth [°]	TVD [ft]	Comment
17.00	0.000	343.720	17.00	Tie on Point
414.00	0.380	343.720	414.00	First BHI Survey
10788.00	90.400	358.940	6171.09	Last BHI Survey
10840.00	90.500	359.500	6170.68	Projection to Bit