

1801 Broadway
Suite 500
Denver, Colorado 80202



Callie Fiddes
Regulatory Technician
Tel: 303.398.0550
E-mail: cfiddes@gwogco.com

June 5, 2014

Colorado Oil and Gas Conservation Commission
1120 Lincoln Street, Suite 801
Denver, Colorado 80203

RE: **Proposed Wellbore Spacing Unit**
Gustafson EF 31-377HN

Niobrara New Drill
Township 7 North, Range 65 West, 6th P.M.
Section 31
Weld County, Colorado

Dear Director:

Great Western Operating Company, LLC is planning to drill the above captioned well in accordance with the provisions of COGCC Rule 318(l)e(2).

Great Western proposed wellbore spacing unit consists of:

- **W2 Sec 31**

The 30 day notification time has passed and we have not received any objections to such well locations or proposed spacing unit, therefore Great Western hereby requests the Director to approve the above mentioned well. Great Western Operating Company, LLC respectfully requests that the COGCC review the enclosed map illustrating the proposed wellbore spacing unit.

Respectfully,

Callie Fiddes

Callie Fiddes
Regulatory Technician
Great Western Operating Company, LLC

Private Alum. Cap.
#2513, 0.3' Below
Ground in Monument Box
Lot: 40.539181
Long: 104.715844

**Private Alum. Cap.
#2513, 0.6' Below
Ground in Monument Box
Lot: 40.538758
Long: 104.696897**

R 66
W 65
W 66

S88°53'52"E
2740.11' (Meas.)

S88°53'43"E - 2565.27' (Meas.)

GREAT WESTERN OIL & GAS COMPANY
Well location, GUSTAFSON EF 31-377HN, located as shown in LOT 1 of Section 31, 17N, R65W, 6th P.M., Weld County, Colorado.

BASIS OF ELEVATION

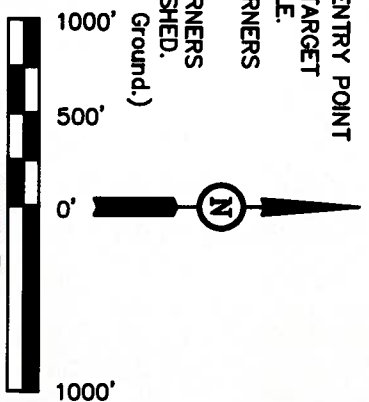
USGS COOPERATIVE BASE NETWORK CONTROL STATION, DESIGNATION "VERMILYEA". NGS DATA SHEET LISTS THE NAVD 88 ELEVATION AS BEING 5026 FEET.

BASIS OF BEARINGS

BASIS OF BEARINGS IS A G.P.S. OBSERVATION.

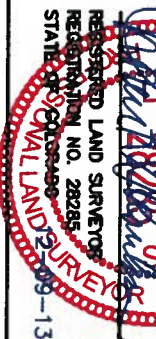
LEGEND:

- └ = 90° SYMBOL
- = PROPOSED WELL HEAD.
- ◇ = PROPOSED ENTRY POINT
- = PROPOSED TARGET BOTTOM HOLE.
- ▲ = SECTION CORNERS LOCATED.
- △ = SECTION CORNERS RE-ESTABLISHED. (Not Set on Ground.)



LINE	DIRECTION	LENGTH
L1	S52°40'53"W	289.75'

THIS IS TO CERTIFY THAT THE ABOVE COPY WAS PREPARED FROM FIELD NOTES OF ACTUAL SURVEY MADE BY ME OR UNDER MY SUPERVISION AND THAT THE SAME ARE TRUE AND CORRECT TO THE BEST OF MY KNOWLEDGE AND BELIEF.

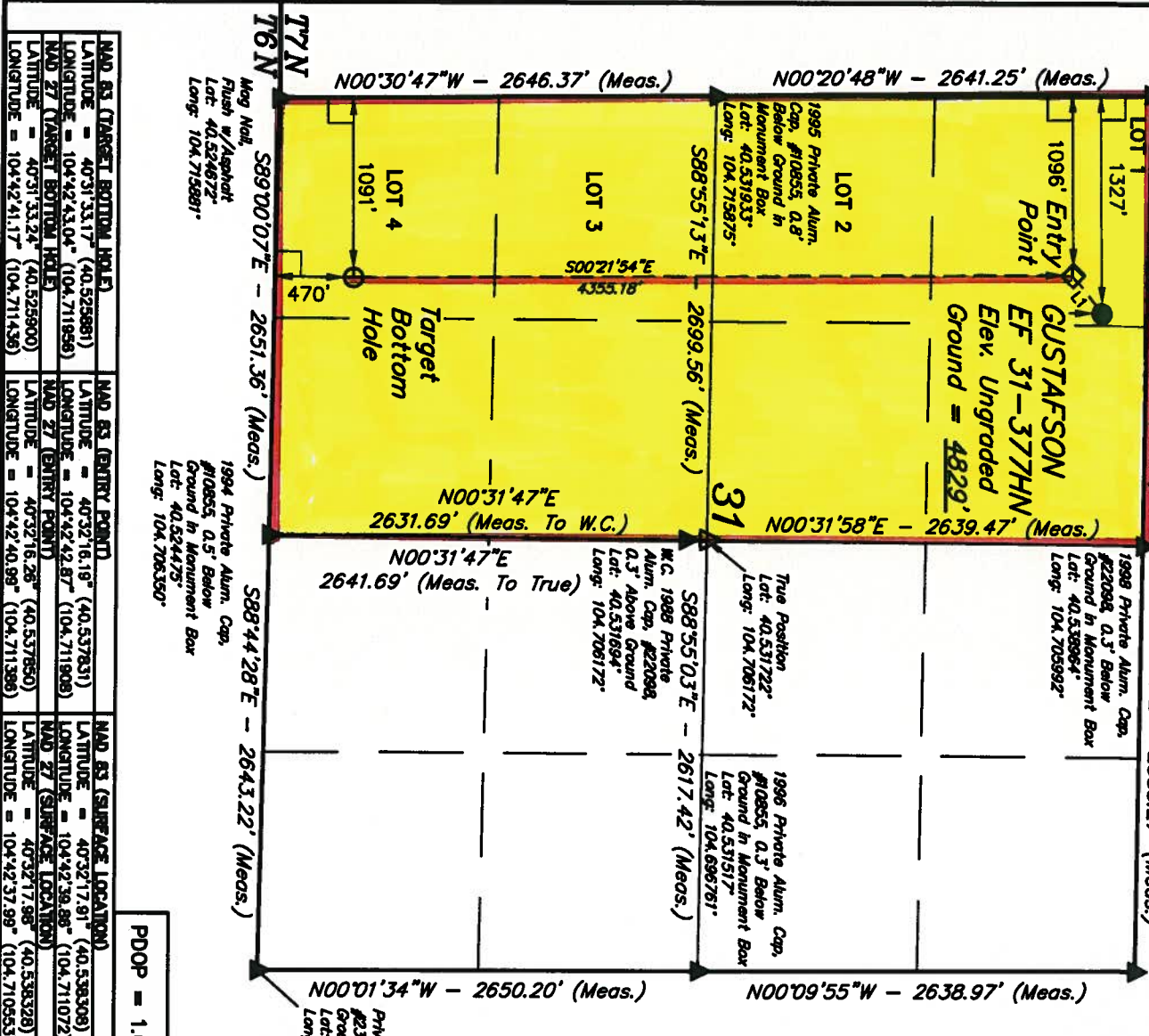


REMOVED: 12-03-13 H.K.W.

UNTARH ENGINEERING & LAND SURVEYING
86 SOUTH 200 EAST - VERNAL, UTAH 84078
(435) 789-1017

SCALE	DATE SURVEYED:	DATE DRAWN:
1" = 1000'	10-28-13	11-05-13

PARTY	REFERENCES
DALLAS NIELSEN G.W. J.W.	G.L.O. PLAT
WEATHER	FILE
HOT	GREAT WESTERN OIL & GAS COMPANY



NAD 83 (TARGET BOTTOM HOLE)	NAD 83 (ENTRY POINT)	NAD 83 (SURFACE LOCATION)
LATITUDE = 40°31'33.17" (40.525881)	LATITUDE = 40°32'16.19" (40.537831)	LATITUDE = 40°32'17.91" (40.538308)
LONGITUDE = 104°42'43.04" (104.711858)	LONGITUDE = 104°42'42.67" (104.711908)	LONGITUDE = 104°42'39.86" (104.711072)
NAD 27 (TARGET BOTTOM HOLE)	NAD 27 (ENTRY POINT)	NAD 27 (SURFACE LOCATION)
LATITUDE = 40°31'33.24" (40.525900)	LATITUDE = 40°32'16.26" (40.537850)	LATITUDE = 40°32'17.98" (40.538328)
LONGITUDE = 104°42'41.17" (104.711438)	LONGITUDE = 104°42'40.99" (104.711388)	LONGITUDE = 104°42'37.99" (104.710553)

PDOP = 1.6