

1801 Broadway  
Suite 500  
Denver, Colorado 80202



Callie Fiddes  
Regulatory Technician  
Tel: 303.398.0550  
E-mail: cfiddes@gwogco.com

June 5, 2014

Colorado Oil and Gas Conservation Commission  
1120 Lincoln Street, Suite 801  
Denver, Colorado 80203

RE: **Proposed Wellbore Spacing Unit**  
Gustafson EF 31-374HN

Niobrara New Drill  
Township 7 North, Range 65 West, 6<sup>th</sup> P.M.  
Section 31  
Weld County, Colorado

Dear Director:

Great Western Operating Company, LLC is planning to drill the above captioned well in accordance with the provisions of COGCC Rule 318(l)e(2).

Great Western proposed wellbore spacing unit consists of:

- **W2 Sec 31**

The 30 day notification time has passed and we have not received any objections to such well locations or proposed spacing unit, therefore Great Western hereby requests the Director to approve the above mentioned well. Great Western Operating Company, LLC respectfully requests that the COGCC review the enclosed map illustrating the proposed wellbore spacing unit.

Respectfully,

*Callie Fiddes*

Callie Fiddes  
Regulatory Technician  
Great Western Operating Company, LLC

77N, R65W, 6th P.M.

Private Alum. Cap.  
R #23513, 0.3' Below  
Ground in Monument Box  
66 65  
W  
Lat: 40.539181°  
Long: 104.715844°

Private Alum. Cap.  
#23513, 0.6' Below  
Ground in Monument Box  
Lat: 40.538758°  
Long: 104.696697°

BASIS OF ELEVATION

**GREAT WESTERN OIL & GAS COMPANY**  
Well location, GUSTAFSON EF 31-374HN, located as shown in LOT 1 of Section 31, 77N, R65W, 6th P.M., Weld County, Colorado.

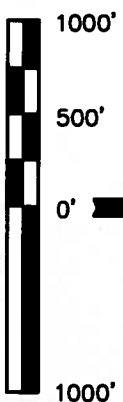
USGS COOPERATIVE BASE NETWORK CONTROL STATION, DESIGNATION "VERMILYEA". NGS DATA SHEET LISTS THE NAVD 88 ELEVATION AS BEING 5026 FEET.  
BASIS OF BEARINGS

BASIS OF BEARINGS IS A G.P.S. OBSERVATION.

**LEGEND:**

- ◻ = 90° SYMBOL
- = PROPOSED WELL HEAD.
- ◇ = PROPOSED ENTRY POINT
- = PROPOSED TARGET BOTTOM HOLE.
- ▲ = SECTION CORNERS LOCATED.
- △ = SECTION CORNERS RE-ESTABLISHED. (Not Set on Ground.)

LINE TABLE	
LINE	DIRECTION LENGTH
L1	S62°34'05"E 410.78'



CERTIFICATE OF RECORDING

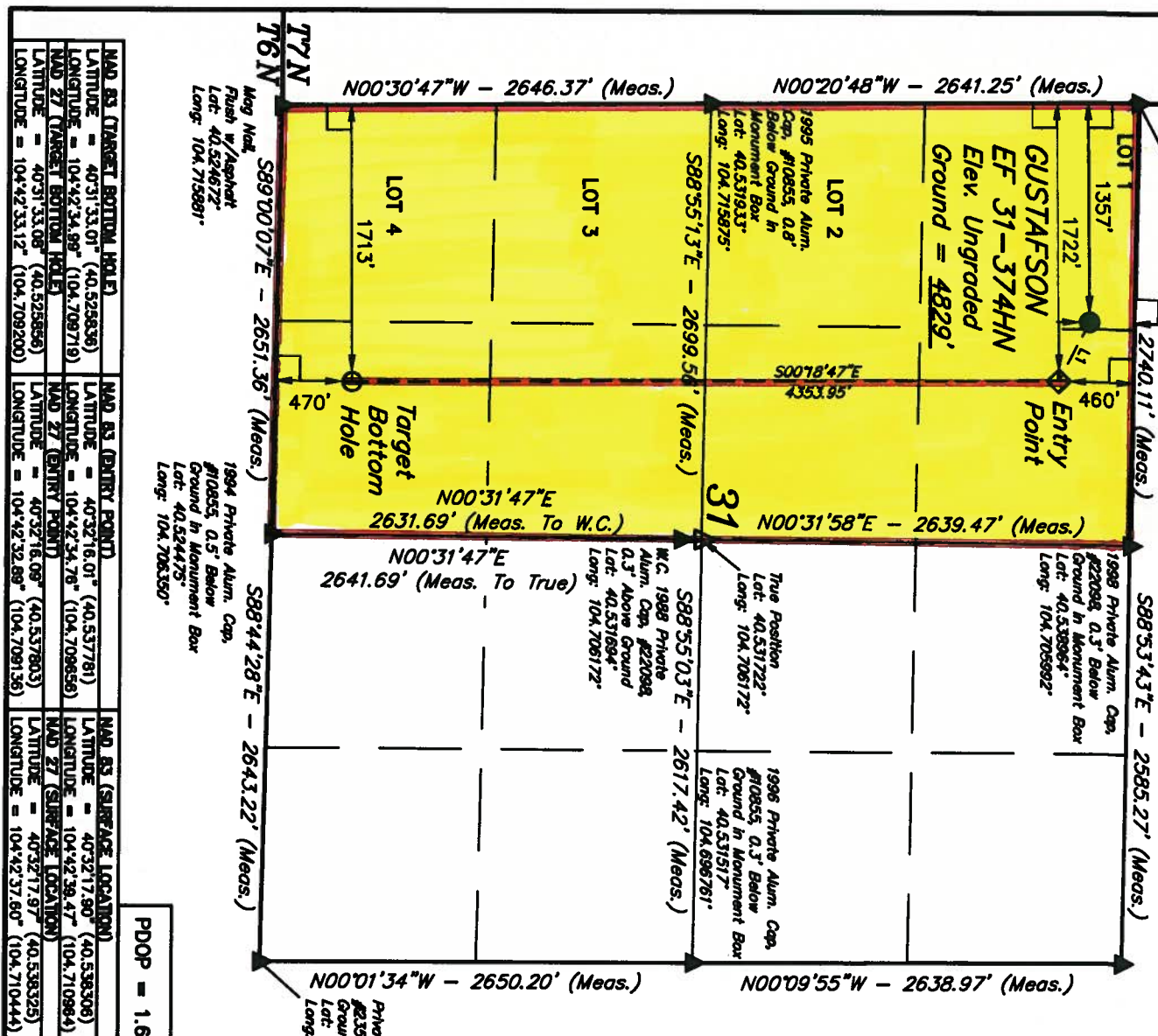
THIS IS TO CERTIFY THAT THE ABOVE MAP WAS PREPARED FROM FIELD NOTES OF ACTUAL SURVEY MADE BY ME OR UNDER MY SUPERVISION AND THAT THE SAME ARE TRUE AND CORRECT TO THE BEST OF MY KNOWLEDGE AND BELIEF.

RECEIVED LAND SURVEYOR REGISTRATION NO. 28285  
STATE OF COLORADO  
RECEIVED LAND SURVEYOR REGISTRATION NO. 28285  
STATE OF COLORADO  
REVISED: 12-03-13 H.K.W.

**UTIAH ENGINEERING & LAND SURVEYING**  
86 SOUTH 200 EAST - VERNAL, UTAH 84078  
(435) 789-1017

SCALE	DATE SURVEYED:	DATE DRAWN:
1" = 1000'	10-28-13	11-05-13

PARTY	REFERENCES
DALLAS NIELSEN G.W. J.W.	G.L.O. PLAT
WEATHER	FILE
HOT	GREAT WESTERN OIL & GAS COMPANY



NAVD 83 (TARGET BOTTOM HOLE)	NAVD 83 (ENTRY POINT)	NAVD 83 (SURFACE LOCATION)
LATITUDE = 40°31'33.01" (40.522836)	LATITUDE = 40°32'16.01" (40.537781)	LATITUDE = 40°32'17.80" (40.538306)
LONGITUDE = 104°42'34.98" (104.709719)	LONGITUDE = 104°42'34.76" (104.709656)	LONGITUDE = 104°42'38.47" (104.710984)
NAVD 27 (TARGET BOTTOM HOLE)	NAVD 27 (ENTRY POINT)	NAVD 27 (SURFACE LOCATION)
LATITUDE = 40°31'33.08" (40.522856)	LATITUDE = 40°32'16.08" (40.537803)	LATITUDE = 40°32'17.97" (40.538325)
LONGITUDE = 104°42'33.12" (104.709200)	LONGITUDE = 104°42'32.89" (104.709136)	LONGITUDE = 104°42'37.60" (104.710444)