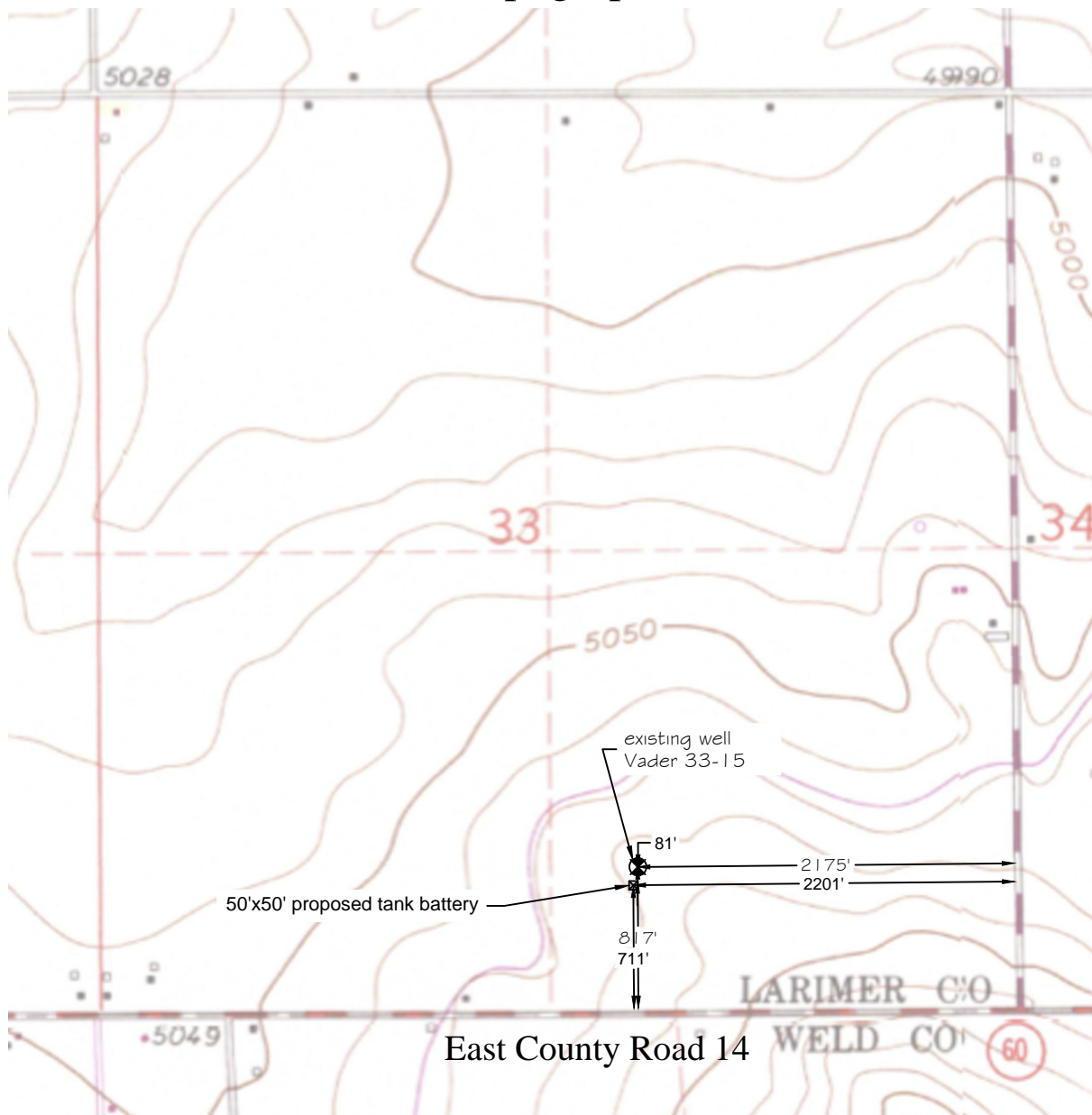


Topographic Exhibit



Notes:

- In accordance with a request from Oil & Gas Permitting Co., PLS Group LLC has determined the location of the proposed tank battery site to be 2201' FEL and 711' FSL as measured perpendicular to the section lines.
- Bearings based on NAD 83, Colorado State Plane Coordinates (SPC) - North Zone (501), using RTK GPS observations taken on 6/18/2013 by Craig Burke.
- Survey elevations based on NAVD 88 Datum using GPS observed heights and Geoid 2009 corrections.
- Distances shown are in SPC grid feet. Ground scale factor=1.000281318447.
- This is not a Monumented Land Survey.
- No rights of way or easements shown.

Z:\Project\2014\14115\dwg\14115.dwg June 20, 2014 - 7:27pm

Well Name: Section 33 Tank Battery	Field Date 6/18/2014	Prepared for: Oil & Gas Permitting Co.	Project#: 14115.001b
Section 33-T5N-R68W-6PM, SW-SE	Party Chief DCB	PLS Group, LLC 6843 North Franklin Avenue Loveland, Colorado 80538 970.669.2100 office - 970.669.3652 fax	
Larimer County, Colorado	Proj. Manager MBS		
	Drawing Date 6/19/2014		