

PROPOSED LOCATION:
 GUSTAFSON EF 31-380HN, 31-379HN, 31-378HC,
 31-377HN, 31-374HN, 31-373HC, 31-372HN,
 GUSTAFSON 31-H, 31-I, 31-J, 31-K & 31-L

SEE TOPO B

1.0 MI. +/-

EATON

HWY 85

T7N

T6N

LEGEND:

● PROPOSED LOCATION



GREAT WESTERN OIL & GAS COMPANY

GUSTAFSON EF 31-380HN, 31-379HN, 31-378HC,
 31-377HN, 31-374HN, 31-373HC, 31-372HN,
 GUSTAFSON 31-H, 31-I, 31-J, 31-K & 31-L
 SECTION 31 T7N, R65W, 6th P.M.
 LOT 1 & NE 1/4 NW 1/4



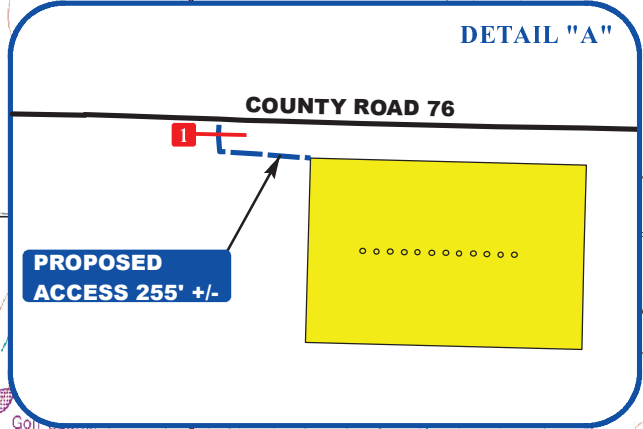
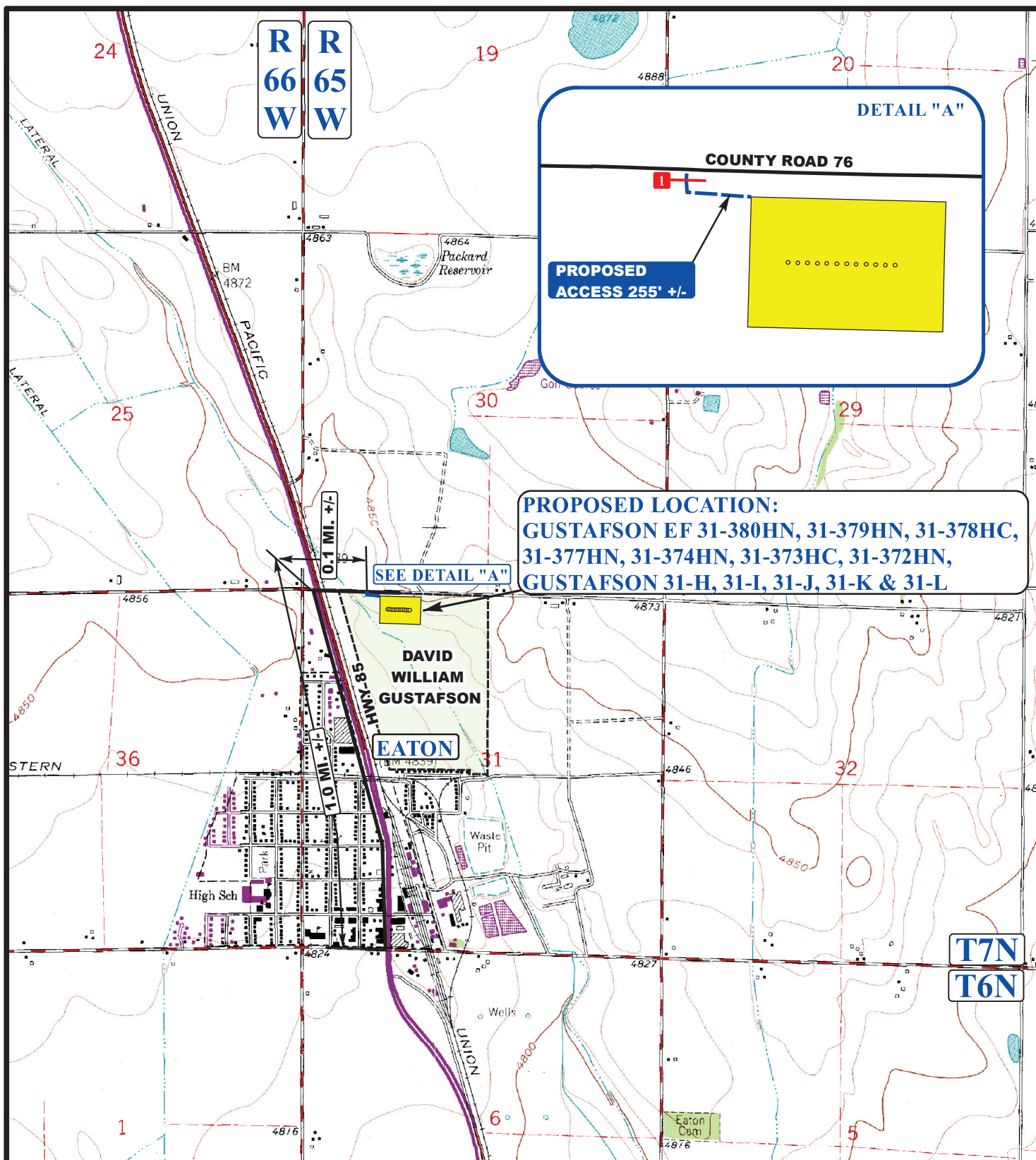
Utah Engineering & Land Surveying
 85 South 200 East Vernal, Utah 84078
 (435) 789-1017 * FAX (435) 789-1813

**ACCESS ROAD
 MAP**

10 30 13
 MONTH DAY YEAR

SCALE: 1:100,000 DRAWN BY: J.C. REVISED: 12-05-13





PROPOSED LOCATION:
 GUSTAFSON EF 31-380HN, 31-379HN, 31-378HC,
 31-377HN, 31-374HN, 31-373HC, 31-372HN,
 GUSTAFSON 31-H, 31-I, 31-J, 31-K & 31-L

SEE DETAIL "A"

DAVID
 WILLIAM
 GUSTAFSON

EATON

T7N

T6N

LEGEND:

- EXISTING ROADS
- PROPOSED ACCESS ROAD
- 18" CMP REQUIRED

GREAT WESTERN OIL & GAS COMPANY

GUSTAFSON EF 31-380HN, 31-379HN, 31-378HC,
 31-377HN, 31-374HN, 31-373HC, 31-372HN,
 GUSTAFSON 31-H, 31-I, 31-J, 31-K & 31-L
 SECTION 31 T7N, R65W, 6th P.M.
 LOT 1 & NE 1/4 NW 1/4



Utah Engineering & Land Surveying
 85 South 200 East Vernal, Utah 84078
 (435) 789-1017 * FAX (435) 789-1813



ACCESS ROAD MAP	10	30	13	B TOPO
	MONTH	DAY	YEAR	
SCALE: 1"=2000'	DRAWN BY: J.C.		REVISED: 12-05-13	