

1801 Broadway
Suite 500
Denver, Colorado 80202



Callie Fiddes
Regulatory Technician
Tel: 303.398.0550
E-mail: cfiddes@gwogco.com

June 5, 2014

Colorado Oil and Gas Conservation Commission
1120 Lincoln Street, Suite 801
Denver, Colorado 80203

RE: **Proposed Wellbore Spacing Unit**
Gustafson EF 31-373HC

Codell New Drill
Township 7 North, Range 65 West, 6th P.M.
Section 31
Weld County, Colorado

Dear Director:

Great Western Operating Company, LLC is planning to drill the above captioned well in accordance with the provisions of COGCC Rule 318(l)e(2).

Great Western proposed wellbore spacing unit consists of:

- **E2W2 Sec 31**

The 30 day notification time has passed and we have not received any objections to such well locations or proposed spacing unit, therefore Great Western hereby requests the Director to approve the above mentioned well. Great Western Operating Company, LLC respectfully requests that the COGCC review the enclosed map illustrating the proposed wellbore spacing unit.

Respectfully,

Callie Fiddes

Callie Fiddes
Regulatory Technician
Great Western Operating Company, LLC

T7N, R65W, 6th P.M.

GREAT WESTERN OIL & GAS COMPANY

Well location, GUSTAFSON EF 31-373HC, located as shown in LOT 1 of Section 31, T7N, R65W, 6th P.M., Weld County, Colorado.

BASIS OF ELEVATION

USGS COOPERATIVE BASE NETWORK CONTROL STATION, DESIGNATION "VERMILYEA". NGS DATA SHEET LISTS THE NAVD 88 ELEVATION AS BEING 5026 FEET.

BASIS OF BEARINGS

BASIS OF BEARINGS IS A G.P.S. OBSERVATION.

LEGEND:

- = 90° SYMBOL
- = PROPOSED WELL HEAD.
- ◇ = PROPOSED ENTRY POINT
- = PROPOSED TARGET BOTTOM HOLE.
- ▲ = SECTION CORNERS LOCATED.
- △ = SECTION CORNERS RE-ESTABLISHED. (Not Set on Ground.)

LINE TABLE	
LINE	DIRECTION LENGTH
L1	S73°28'27"E 676.70'



CERTIFICATE
THIS IS TO CERTIFY THAT THE ABOVE PLAT WAS PREPARED FROM FIELD NOTES OF ACTUAL SURVEY MADE BY ME OR UNDER MY SUPERVISION AND THAT THE SAME ARE TRUE AND CORRECT TO THE BEST OF MY KNOWLEDGE AND BELIEF.

Private Alum. Cap.
#23501, 0.3' Below
Ground in Monument Box
Lat: 40.524247°
Long: 104.696650°

REVISED: 12-03-13 H.K.W.

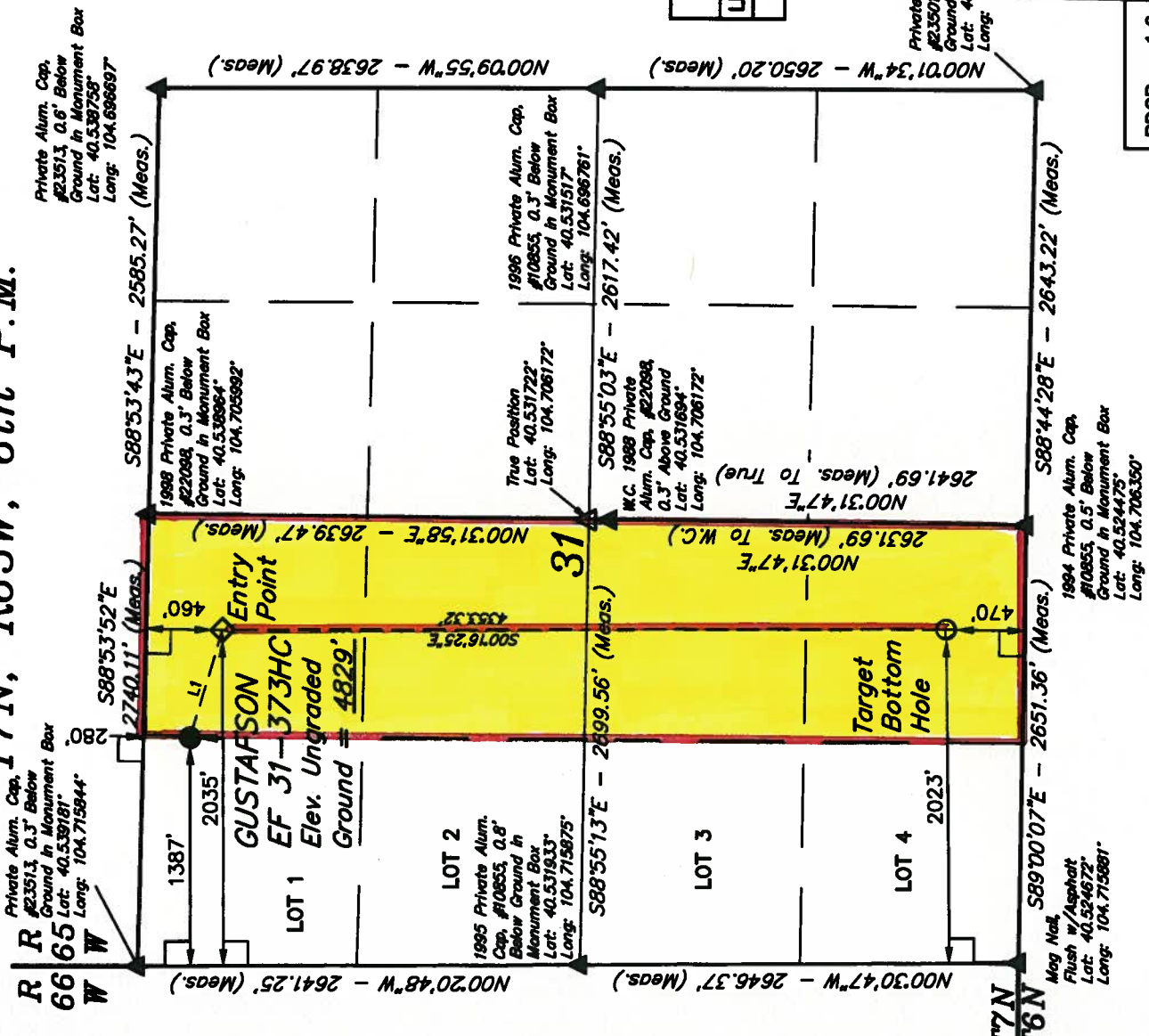
UTAH ENGINEERING & LAND SURVEYING

85 SOUTH 200 EAST - VERNAL, UTAH 84078
(435) 789-1017

SCALE: 1" = 1000'
DATE SURVEYED: 10-28-13
DATE DRAWN: 11-05-13

PARTY: DALLAS NIELSEN G.W. J.W.
REFERENCES: G.I.O. PLAT

WEATHER: HOT
FILE: GREAT WESTERN
OIL & GAS COMPANY



NAD 83 (SURFACE LOCATION)	
LATITUDE = 40°32'17.89"	(40.538303)
LONGITUDE = 104°42'38.09"	(104.710858)
NAD 27 (SURFACE LOCATION)	
LATITUDE = 40°32'17.98"	(40.538322)
LONGITUDE = 104°42'37.21"	(104.710356)
NAD 83 (ENTRY POINT)	
LATITUDE = 40°32'15.93"	(40.537758)
LONGITUDE = 104°42'50.71"	(104.708531)
NAD 27 (ENTRY POINT)	
LATITUDE = 40°32'16.00"	(40.537778)
LONGITUDE = 104°42'28.84"	(104.708011)
NAD 83 (TARGET BOTTOM HOLE)	
LATITUDE = 40°31'32.92"	(40.525811)
LONGITUDE = 104°42'30.95"	(104.708608)
NAD 27 (TARGET BOTTOM HOLE)	
LATITUDE = 40°31'32.99"	(40.525831)
LONGITUDE = 104°42'28.10"	(104.708083)