

T7N, R65W, 6th P.M.

GREAT WESTERN OIL & GAS COMPANY

Well location, GUSTAFSON EF 31-380HN, located as shown in LOT 1 of Section 31, T7N, R65W, 6th P.M., Weld County, Colorado.

BASIS OF ELEVATION

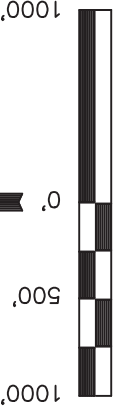
USGS COOPERATIVE BASE NETWORK CONTROL STATION, DESIGNATION "VERMILYEA". NGS DATA SHEET LISTS THE NAVD 88 ELEVATION AS BEING 5026 FEET.

BASIS OF BEARINGS

BASIS OF BEARINGS IS A G.P.S. OBSERVATION.

LEGEND:

- = 90° SYMBOL
- = PROPOSED WELL HEAD.
- = PROPOSED ENTRY POINT
- = PROPOSED TARGET BOTTOM HOLE.
- = SECTION CORNERS LOCATED.
- = SECTION CORNERS RE-ESTABLISHED. (Not Set on Ground.)



LINE TABLE

LINE	DIRECTION	LENGTH
L1	S82°47'25"W	1245.44'

CERTIFICATE OF REGISTRATION
THIS IS TO CERTIFY THAT THE ABOVE PLA WAS PREPARED FROM FIELD NOTES OF ACTUAL SURVEY MADE BY ME OR UNDER MY SUPERVISION AND THAT THE SAME ARE TRUE AND CORRECT TO THE BEST OF MY KNOWLEDGE AND BELIEF.
REGISTERED LAND SURVEYOR
REGISTRATION NO. 28285
STATE OF COLORADO
JUL 28 2013

Private Alum. Cap.
#23501, 0.3' Below
Ground in Monument Box
Lat: 40.524247°
Long: 104.696850°

REVISED: 12-03-13 H.K.W.

UNTAH ENGINEERING & LAND SURVEYING

85 SOUTH 200 EAST - VERNAL, UTAH 84078

(435) 789-1017

SCALE 1" = 1000'

DATE SURVEYED: 10-28-13

DATE DRAWN: 11-05-13

PARTY

DALLAS NIELSEN G.W. J.W.

REFERENCES

G.L.O. PLAT

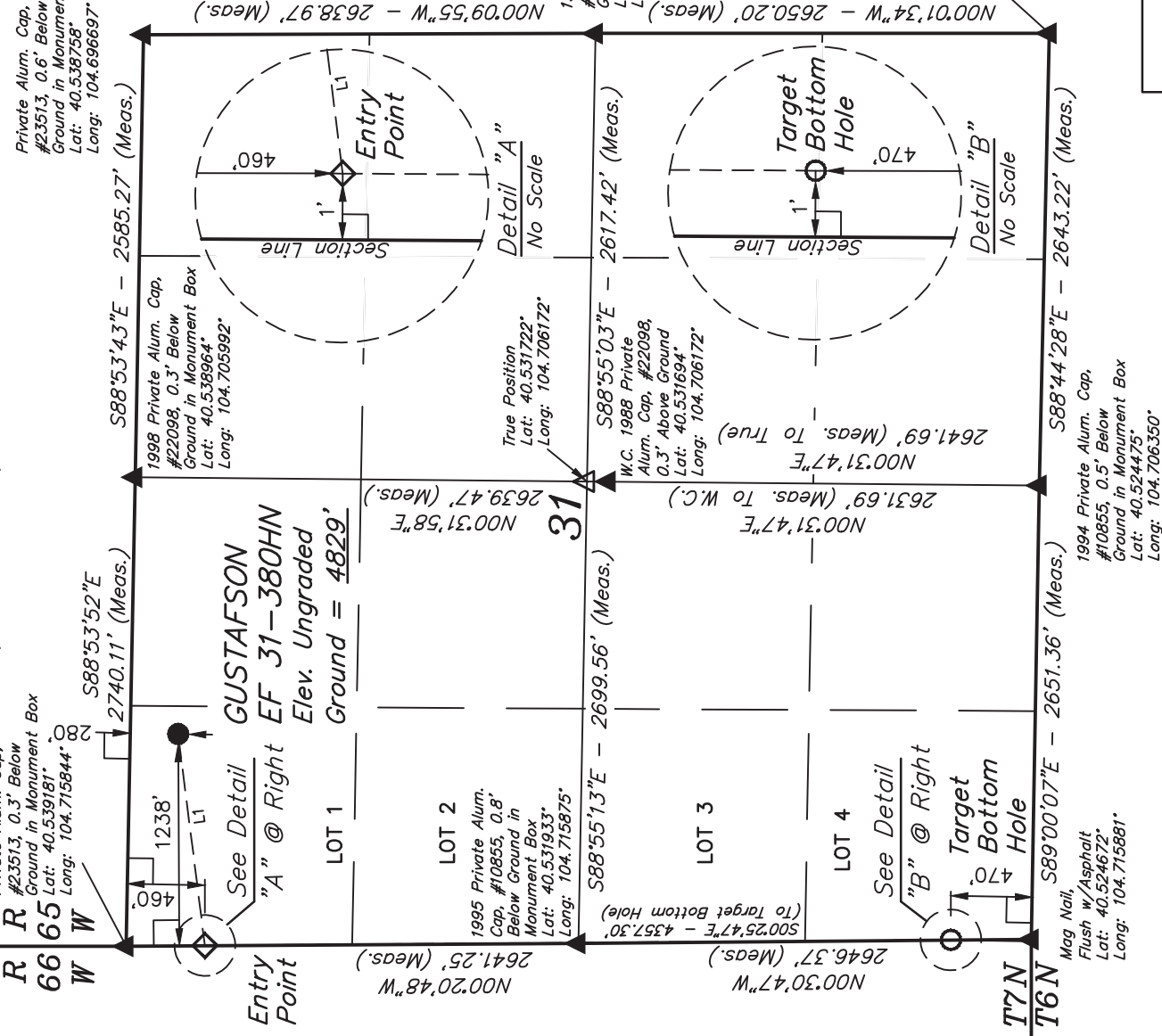
WEATHER

HOT

FILE

GREAT WESTERN

OIL & GAS COMPANY



PDOP = 1.8		NAD 83 (ENTRY POINT)		NAD 83 (SURFACE LOCATION)	
LATITUDE = 40°31'33.46"	(40.525961)	LATITUDE = 40°32'16.50"	(40.537917)	LATITUDE = 40°32'17.93"	(40.538314)
LONGITUDE = 104°42'57.15"	(104.715875)	LONGITUDE = 104°42'57.04"	(104.715844)	LONGITUDE = 104°42'41.03"	(104.711397)
NAD 27 (TARGET BOTTOM HOLE)		NAD 27 (ENTRY POINT)		NAD 27 (SURFACE LOCATION)	
LATITUDE = 40°31'33.53"	(40.525981)	LATITUDE = 40°32'16.57"	(40.537936)	LATITUDE = 40°32'18.00"	(40.538333)
LONGITUDE = 104°42'55.28"	(104.715336)	LONGITUDE = 104°42'55.17"	(104.715325)	LONGITUDE = 104°42'39.15"	(104.710875)