



410 17th Street, Suite 1500  
Denver, CO 80202  
(720) 440-6100 phone  
(720) 305-0804 fax

[Bonanzacr.com](http://Bonanzacr.com)

16 June 2014

Colorado Oil and Gas Conservation  
Commission  
The Chancery Building  
1120 Lincoln Street, Suite 801  
Denver, CO 80203

Attn: Matthew Lepore, Director

Re: Notice of 318A.a.(4)D. Horizontal Wellbore Spacing Unit Proposal  
Antelope P41-T44-29HC  
SHL: NWNE (283' FNL, 1348' FEL) Sec. 29-T5N-R62W  
Top of Production: NENE (631' FNL, 965' FEL) Sec. 29-T5N-R62W  
Bottom of Production: SESE (470' FSL, 965' FEL) Sec. 29-T5N-R62W  
Weld County, Colorado

Dear Director Lepore,

Bonanza Creek Energy, Inc. (Bonanza) intends to permit, drill and operate the referenced Codell Horizontal Well. As defined by Colorado Oil and Gas Conservation Commission (COGCC) Rule 318A.a.(4)D., Bonanza proposes the following wellbore spacing unit:

5N-62W-Section 29 E/2, containing 320 acres more or less

Bonanza is the sole mineral lease holder in the proposed spacing unit, and no mineral owner notifications were required.

Bonanza respectfully requests that you review the enclosed wellbore spacing unit documentation and approve the referenced APD.

Please do not hesitate to call or email me, directly, at (720) 440-6179 or [KKrupka@Bonanzacr.com](mailto:KKrupka@Bonanzacr.com), should you have any questions pertaining to this matter.

Thank you for your cooperation.

Sincerely,

Katey Krupka  
Regulatory Assistant  
Bonanza Creek Energy, Inc.

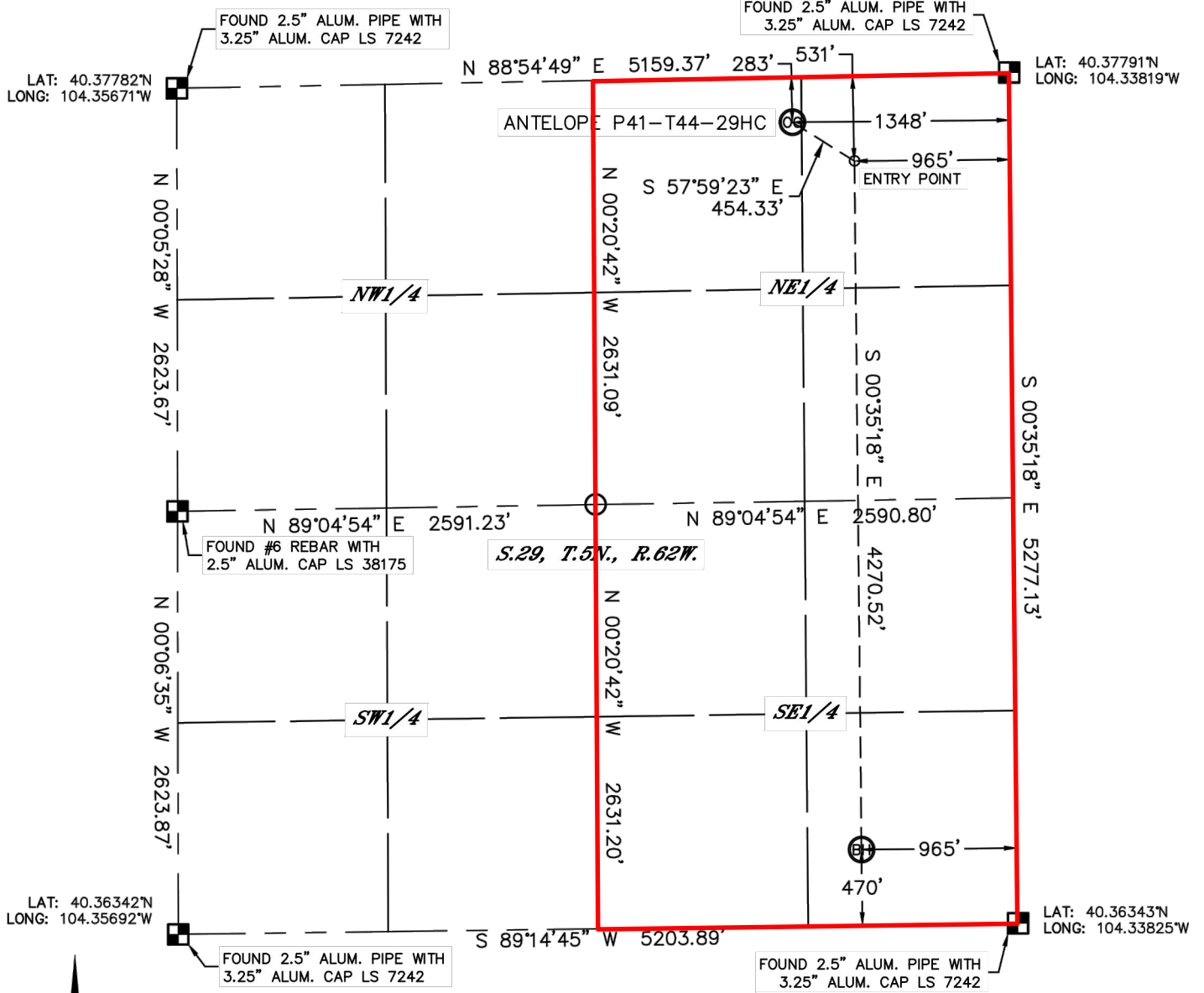


Lat40°, Inc. 1635 Foxtrail Drive, Suite 325 Loveland, CO 970-776-3321

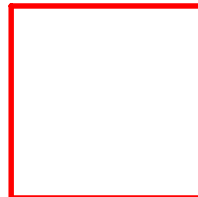
# WELL LOCATION CERTIFICATE

SECTION: 29  
TOWNSHIP: 5N  
RANGE: 62W

THIS MAP DOES NOT REPRESENT A BOUNDARY SURVEY



In accordance with a request from Jim Foster with BONANZA CREEK ENERGY, INC.  
Lat40°, Inc. has determined the surface location of the ANTELOPE P41-T44-29HC to be 283' from the  
NORTH line and 1348' from the EAST line and the bottom hole to be 470' from the SOUTH line and 965'



Wellbore Spacing Unit Outline



Wellbore Spacing Unit Map  
18 June 2014 ksc

Antelope P41-T44-29HC  
E/2 Sec 29-T5N-R62W 6th PM  
Weld County, Colorado