

SIDETRACK WELLBORE DIAGRAM

7/17/2014

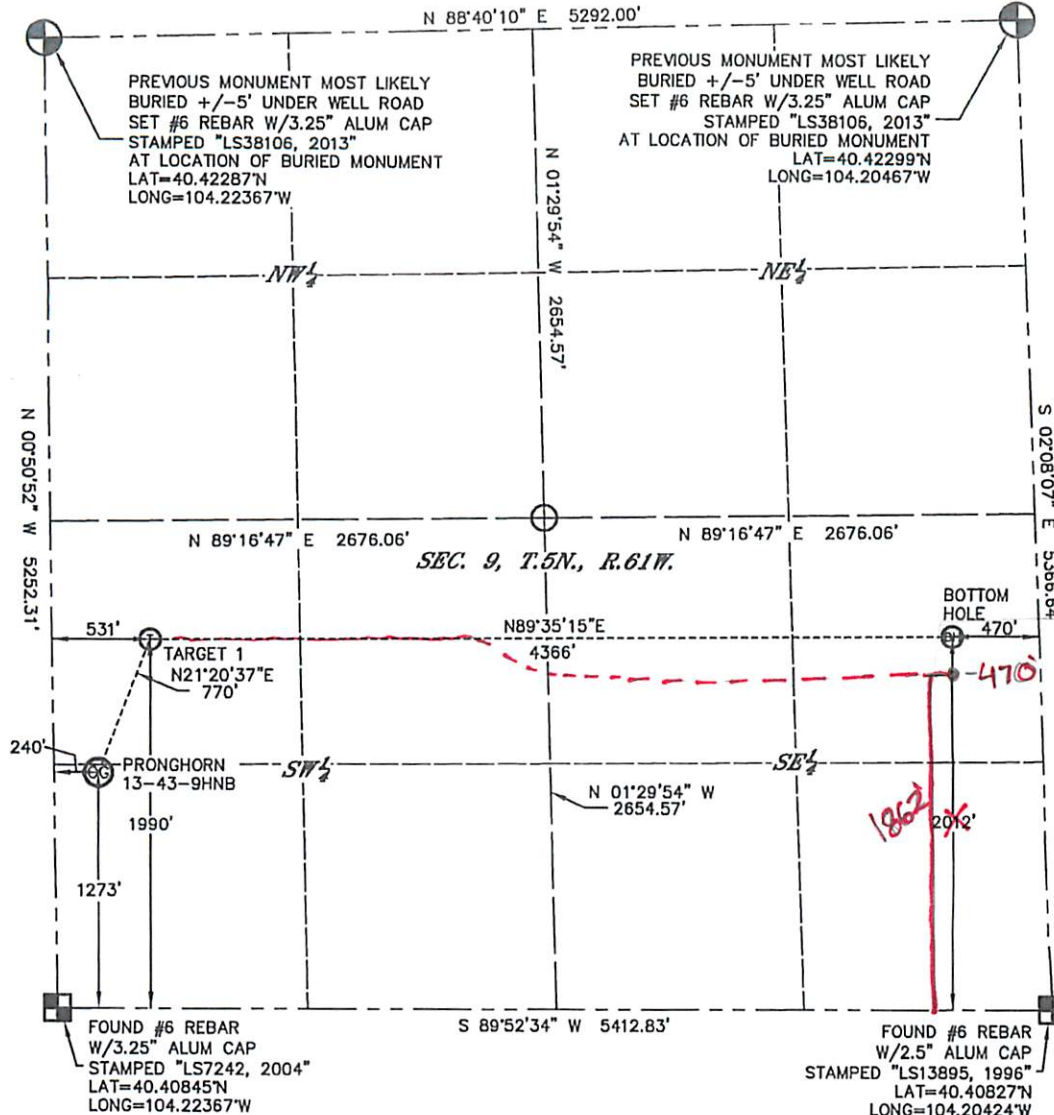
KING SURVEYORS 650 E. GARDEN DR. WINDSOR, CO 80550

WELL LOCATION CERTIFICATE

PRONGHORN 13-43-9HNB

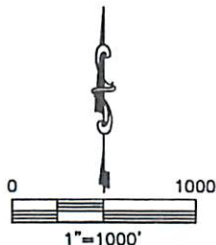
THIS MAP DOES NOT REPRESENT A BOUNDARY SURVEY

SECTION: 9
TOWNSHIP: 5N
RANGE: 61W



In accordance with a request from RANDY EDELEN with BONANZA CREEK ENERGY, INC., King Surveyors has determined the surface location of PRONGHORN 13-43-9HNB to be 1273' from the SOUTH line and 240' from the WEST line and the bottom hole to be 2012' from the SOUTH line and 470' from the EAST line, as measured at right angles, from the section lines of Section 9, Township 5 North, Range 61 West of the Sixth Principal Meridian, County of Weld, State of Colorado.

I hereby state that this Well Location Certificate was prepared by me, or under my direct supervision, that the fieldwork was completed on 12-09-2013, for and on behalf of BONANZA CREEK ENERGY, INC., that this is not a Land Survey Plat or an Improvement Survey Plat, and that it is not to be relied upon for establishment of fence, building, or other future improvement lines.



NOTES:

- 1) Bearings shown are Grid Bearings of the Colorado State Plane Coordinate System, North Zone, North American Datum 1983. The lineal dimensions as contained herein are based upon the "U.S. Survey Foot."
- 2) Ground elevations are based on an observed GPS elevation (NAVD 1988 DATUM).
- 3) IMPROVEMENTS: See LOCATION DRAWING for all visible improvements within 500' of the disturbed area.
- 4) SURFACE USE: PRAIRIE/PASTURE
- 5) INSTRUMENT OPERATOR: TOM WINANS
- 6) NEAREST CULTURAL ITEMS:
BUILDING: 5280'+
BUILDING UNIT: 5280'+
HIGH OCCUPANCY BUILDING UNIT: 5280'+
DESIGNATED OUTDOOR ACTIVITY AREA: 5280'+
PUBLIC ROAD: 224' WEST
ABOVE GROUND UTILITY: 5280'+
RAILROAD: 5280'+
PROPERTY LINE: 240' WEST

LEGEND

- = FOUND ALIQUOT MONUMENT AS DESCRIBED
- = CALCULATED POSITION
- = SET ALIQUOT MONUMENT AS DESCRIBED

SURFACE LOCATION

LATITUDE: 40.41194°N
LONGITUDE: 104.22281°W
PDOP: 1.0
ELEV: 4637'
1/4,1/4: SW1/4 SW1/4

TARGET

LATITUDE: 40.41390°N
LONGITUDE: 104.22176°W
1/4,1/4: NW1/4 SW1/4

BOTTOM HOLE

LATITUDE: 40.41381°N
LONGITUDE: 104.20609°W
1/4,1/4: NE1/4 SE1/4

Lawrence S. Pepek - On Behalf of King Surveyors
Colorado Licensed Professional Land Surveyor #33642
PROJECT#: 2013781

33642
12-26-13